

**For
Lease**



Prime Medical Office Suites

IN THE HEART OF SANTA FE'S MEDICAL CORRIDOR



3 MONTHS FREE RENT!
WITH A 3-YEAR LEASE

Limited time offer, see Advisors for details.

5 Calle Medico | Santa Fe, NM 87505

NAI SunVista  **Got Space™**

Opening the Door to Commercial Real Estate Excellence

±923-1,530 SF Available

Lauren Landavazo

lauren@sunvista.com | 505 227 0585

For Lease

5 Calle Medico | Santa Fe, NM 87505



PROPERTY

AVAILABLE

Suite 5E: ±923 SF
\$22.00/SF Modified Gross

Suite D: ±1,530 SF
\$24.00/SF Modified Gross

HIGHLIGHTS

- **Premier Medical Corridor Location** – Close to Christus St. Vincent and Presbyterian Urgent Care
- **Seamless Access** – Quick connectivity to St. Francis Drive and I-25
- **Convenient Proximity** – Near major shopping centers, dining, and services
- **Highly Accessible** – Easy for clients, patients, and employees to reach

ZONING C-1

LOCATION

- NWQ St. Michaels Dr. & Old Pecos Trail

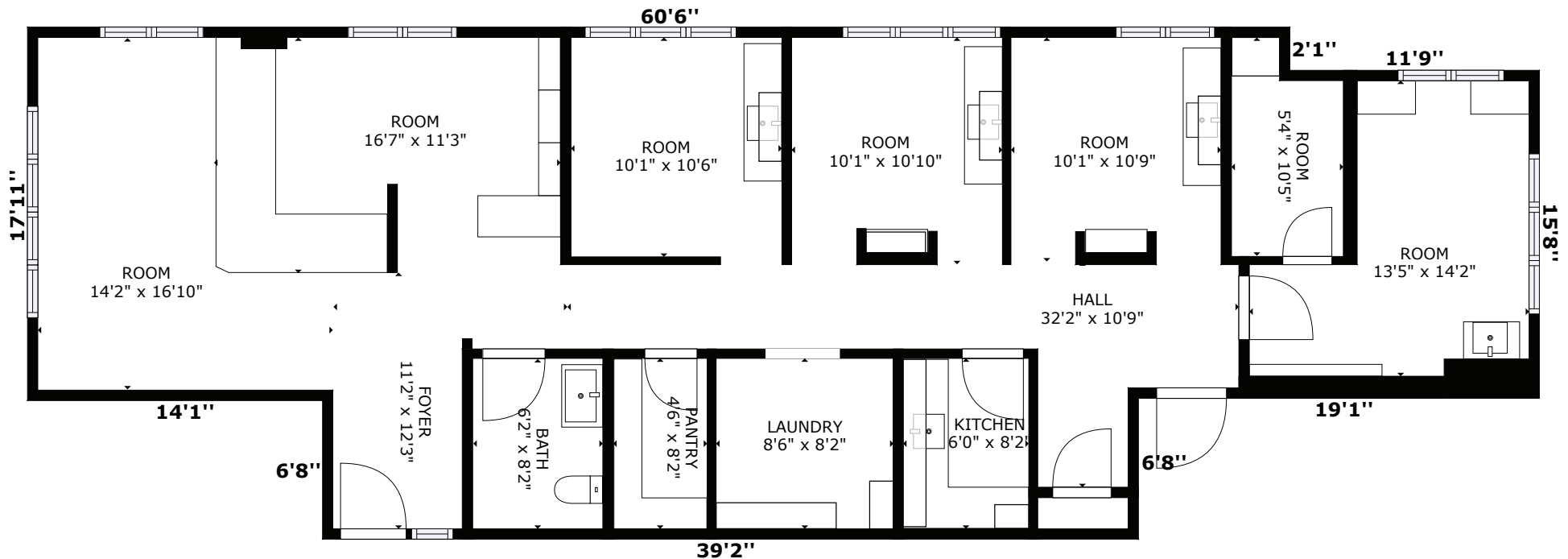
For Lease

5 Calle Medico | Santa Fe, NM 87505

FLOOR PLAN

AVAILABLE

Suite D: ±1,530 SF



For Lease

5 Calle Medico | Santa Fe, NM 87505






For Lease

5 Calle Medico | Santa Fe, NM 87505



LOCATION

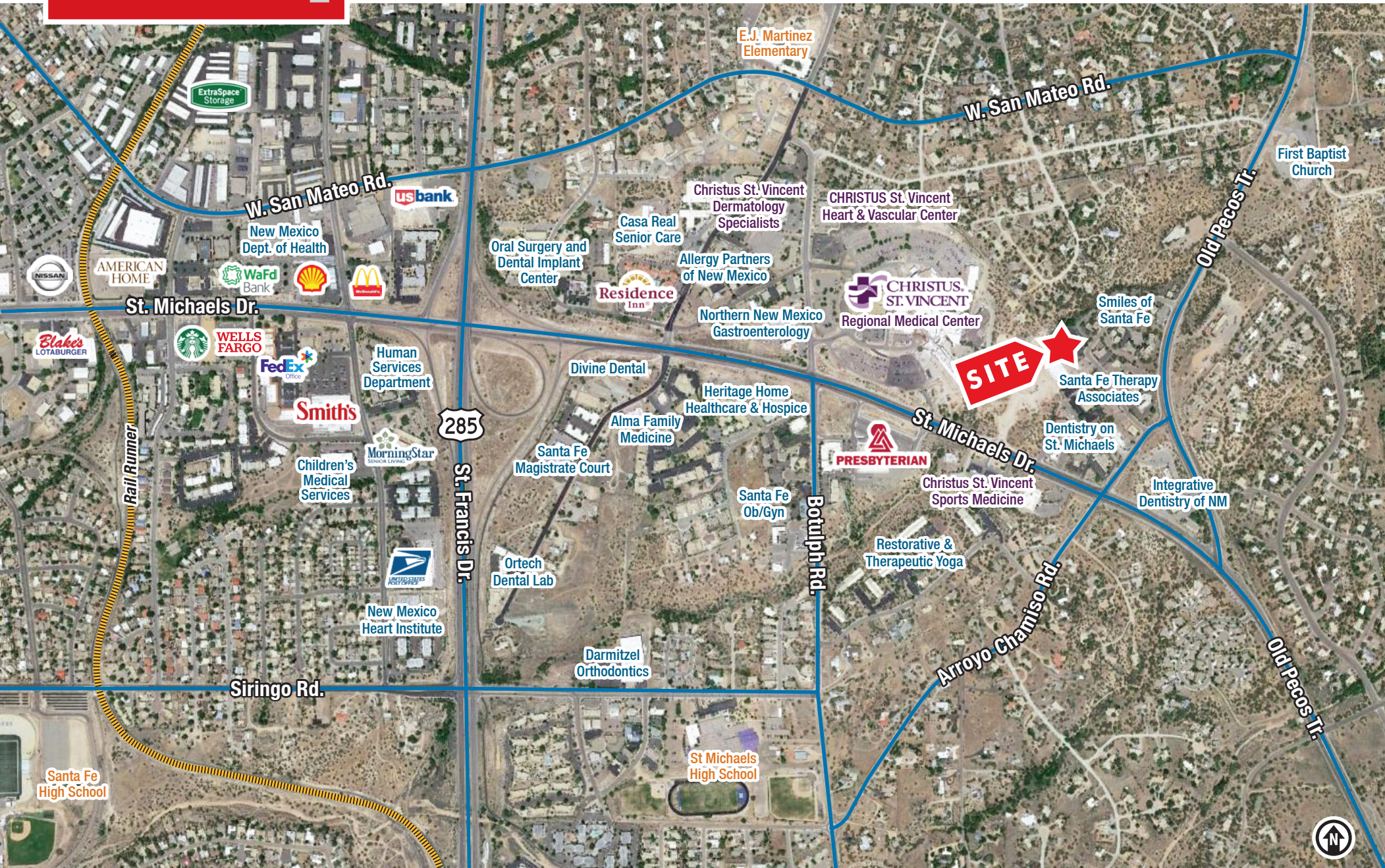
Demographics	1 Mile	3 Mile	5 Mile
 Total Population	5,755	48,175	75,613
 Average HH Income	\$117,470	\$111,146	\$112,726
 Daytime Employment	12,209	59,403	70,779

2024 Forecasted by Esri



For Lease

5 Calle Medico | Santa Fe, NM 87505



SANTA FE | THE CITY DIFFERENT

The oldest capital city in the United States and the oldest city in New Mexico, Santa Fe is well-known as a center for arts that reflect the multicultural character of the region. Tourism is a major element of the Santa Fe economy, with visitors attracted year-round by the mild climate, outdoor activities and cultural events that the area offers. Most tourist activity takes place in the historic downtown, especially on and around Santa Fe Plaza, a one-block square adjacent to the Palace of the Governors, the original seat of New Mexico's territorial government during the time of Spanish colonization. Other areas include Canyon Road and "Museum Hill", the site of the major art museums of the city as well as the Santa Fe International Folk Art Market. Seasonal activities, such as skiing at nearby Santa Fe Ski Basin in the winter and hiking are also a draw for tourists.



New Mexico
**State
Capitol**



SANTA FE BY THE NUMBERS (Metropolitan Statistical Area, ESRI 2025 Demographics)



158,843
MSA Population



71,242
Households



\$119,650
Avg. Household Income



\$64,195
Md. Disposable Income



8,053
Total Businesses



89,677
Total Employees

FOUNDED IN 1608, SANTA FE IS THE OLDEST STATE CAPITAL IN THE UNITED STATES

SANTA FE ACCOLADES

- #1 of the "15 Best Cities in the U.S." *Travel + Leisure 2025*
- Top 100 Best Places to Live *Livability 2024-2025*
- Among "The World's Greatest Places" *Time 2024*
- One of "The Best Places to Go" *Conde Nast Traveler 2024*
- "Travel Guide Star Award Winners List" *Forbes Travel Guide 2024*
- "Best Fine Dining in the U.S." *TripAdvisor 2023*
- "100 Best Ski Resorts in U.S. & Canada." *Wall Street Journal 2023*
- "Best Art Museums" *USA Today 10 Best 2023*
- One of the "Best Destinations in the West" *Sunset Magazine 2023*



A TOURIST DESTINATION

Santa Fe is the **3rd-Largest Art Market in the United States** after New York and Los Angeles.



A half-mile stretch of Santa Fe's Canyon Road has **more than 100** galleries, boutiques and restaurants "making it the world's densest concentration of art galleries." *FourSeasons.com*