

FOR SALE

936 ACRES OF DEVELOPMENT LAND

PRIME LOCATION BETWEEN SANTA FE AND ALBUQUERQUE, NM



1438 NM 16 | CERRILLOS, NM 87010

4 LARGE TRACTS = 936.89 ACRES



OFFERED AT
\$9500 PER
ACRE

PROPERTY HIGHLIGHTS

- Excellent visibility and access from the interstate
- Located between two major markets in New Mexico
- Tracts available for investors or possible development
- Potential Water Rights Available
- Expansive open vistas and New Mexico landscapes



8200 Carmel Ave NE STE 103-A, Albuquerque, NM 87122
505.292.8900

STEVE GRITCHEN
REALTOR® | Associate Broker
sgritchen@gmail.com
(505) 415-1554



NIKKI BRONSTORP
REALTOR® | Qualifying Broker
nikki.coldwellbl@gmail.com
c: (505) 209-1246



FOR SALE

936 ACRES OF DEVELOPMENT LAND

PRIME LOCATION BETWEEN SANTA FE AND ALBUQUERQUE, NM



1438 NM 16 | CERRILLOS, NM 87010

LOCATION



8200 Carmel Ave NE STE 103-A, Albuquerque, NM 87122
505.292.8900

STEVE GRITCHEN
REALTOR® | Associate Broker
sgritchen@gmail.com
(505) 415-1554



NIKKI BRONSTORP
REALTOR® | Qualifying Broker
nikki.coldwellbl@gmail.com
c: (505) 209-1246



FOR SALE

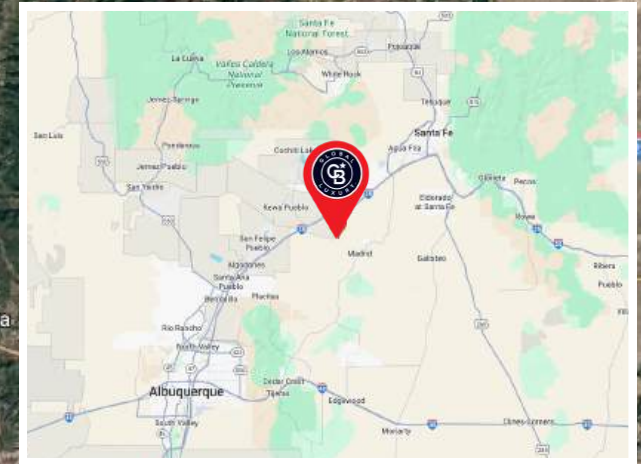
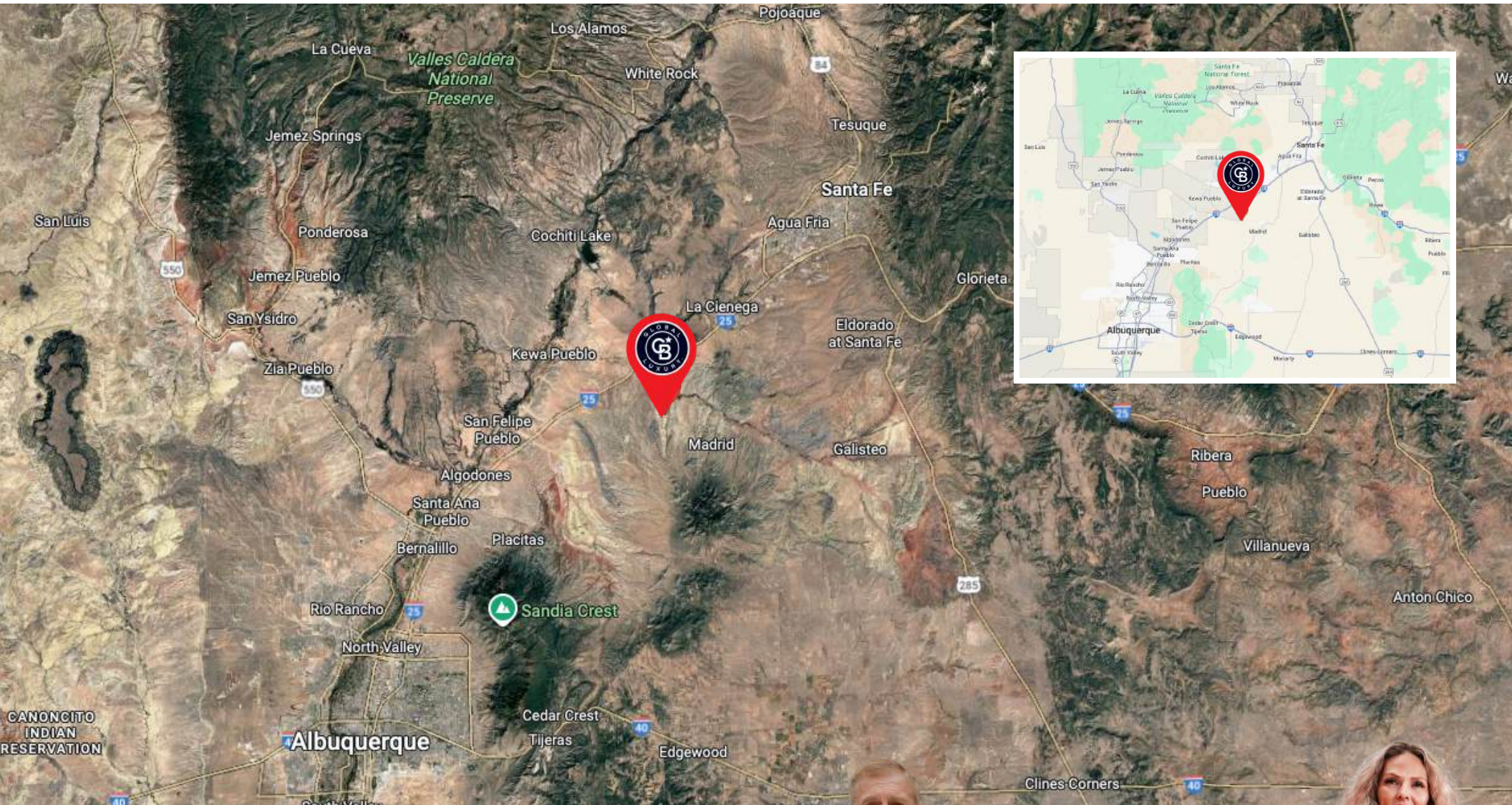
936 ACRES OF DEVELOPMENT LAND

PRIME LOCATION BETWEEN SANTA FE AND ALBUQUERQUE, NM



1438 NM 16 | CERRILLOS, NM 87010

LOCATION



COLDWELL BANKER | LEGACY

8200 Carmel Ave NE STE 103-A, Albuquerque, NM 87122
505.292.8900

STEVE GRITCHEN
REALTOR® | Associate Broker
sgritchen@gmail.com
(505) 415-1554



NIKKI BRONSTORP
REALTOR® | Qualifying Broker
nikki.coldwellbl@gmail.com
c: (505) 209-1246



FOR SALE

936 ACRES OF DEVELOPMENT LAND

PRIME LOCATION BETWEEN SANTA FE AND ALBUQUERQUE, NM



1438 NM 16 | CERRILLOS, NM 87010

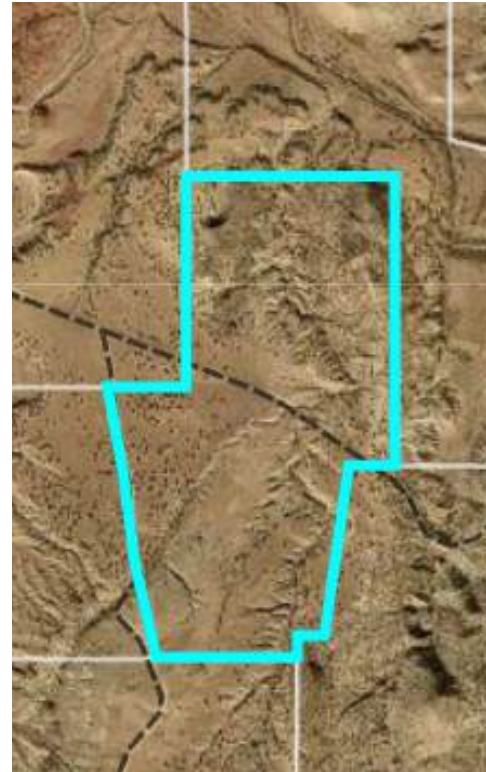
TRACTS



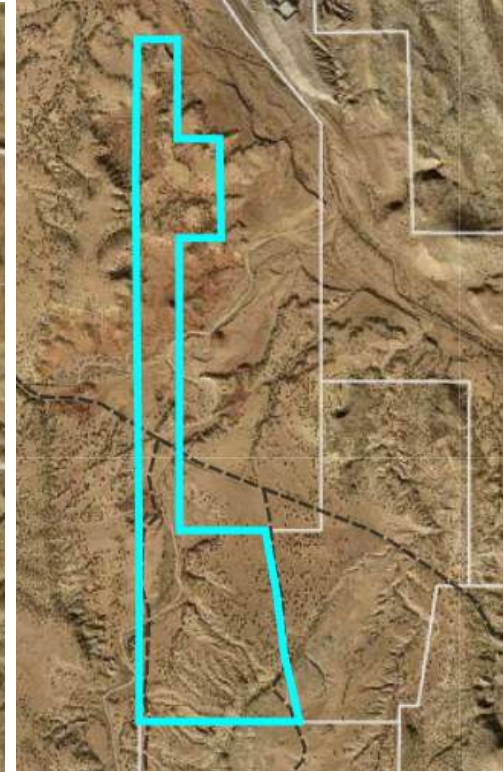
TRACT 1:
307 ACRES±



TRACT 2:
210 ACRES±



TRACT 3:
206 ACRES±



TRACT 4:
213 ACRES±



8200 Carmel Ave NE STE 103-A, Albuquerque, NM 87122
505.292.8900

STEVE GRITCHEN
REALTOR® | Associate Broker
sgritchen@gmail.com
(505) 415-1554



NIKKI BRONSTORP
REALTOR® | Qualifying Broker
nikki.coldwellbl@gmail.com
c: (505) 209-1246



FOR SALE

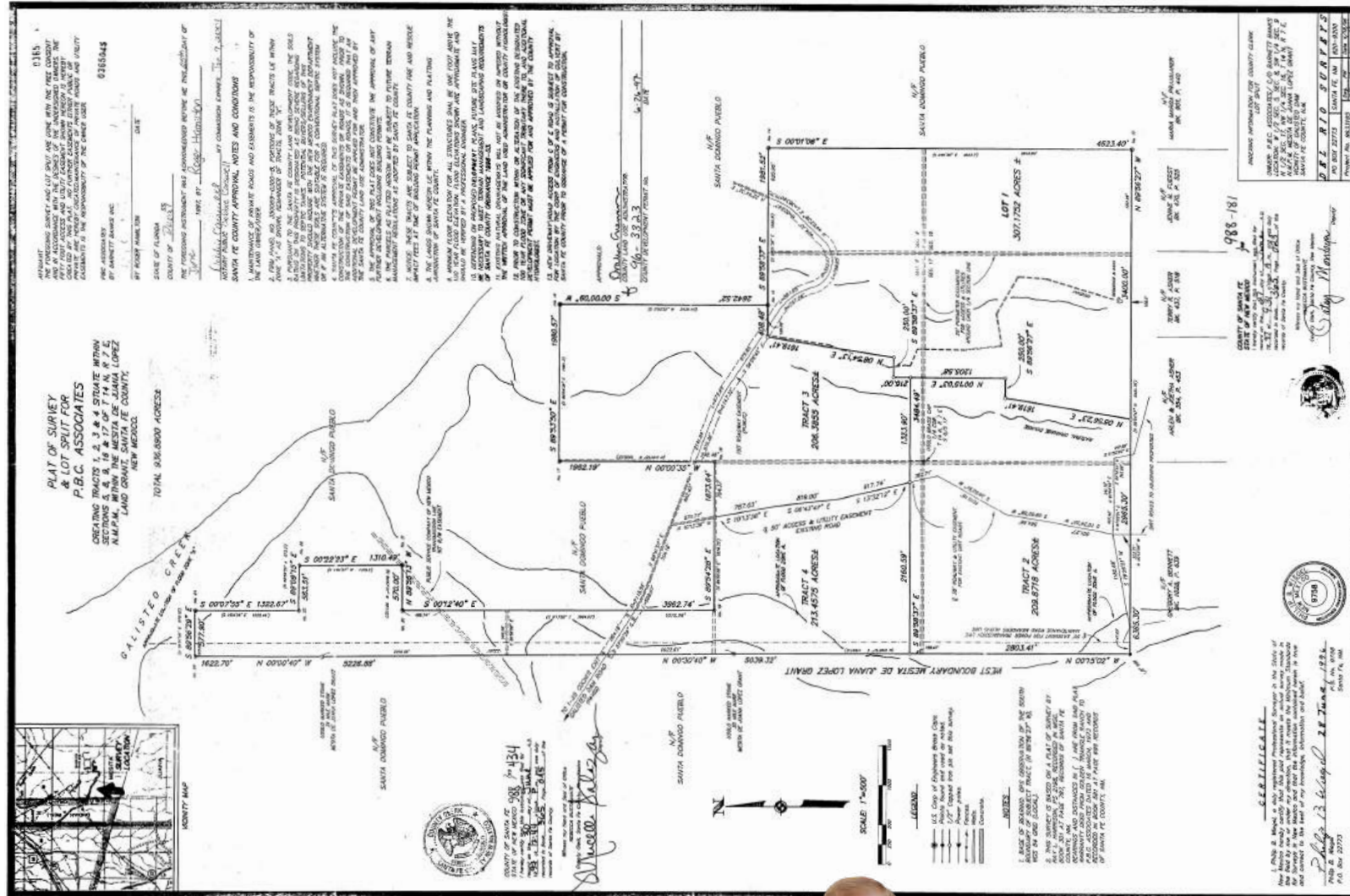
936 ACRES OF DEVELOPMENT LAND

PRIME LOCATION BETWEEN SANTA FE AND ALBUQUERQUE, NM



1438 NM 16 | CERRILLOS, NM 87010

PLAT SURVEY



8200 Carmel Ave NE STE 103-A, Albuquerque, NM 87122
505.292.8900

STEVE GRITCHEN
REALTOR® | Associate Broker
sgritchen@gmail.com
(505) 415-1554



NIKKI BRONSTORP
REALTOR® | Qualifying Broker
nikki.coldwellbl@gmail.com
c: (505) 209-1246



FOR SALE

936 ACRES OF DEVELOPMENT LAND

PRIME LOCATION BETWEEN SANTA FE AND ALBUQUERQUE, NM



1438 NM 16 | CERRILLOS, NM 87010

DETAILS

936.89 Acres for Sale –

Land with Prime Location Between Santa Fe and Albuquerque, NM.

Discover a rare opportunity to own 936.89 contiguous acres of versatile land ideally positioned halfway between Santa Fe and Albuquerque, New Mexico, with easy access right off the interstate. This expansive property consists of four tracts (Tracts 1–4) and offers excellent potential. Currently zoned agricultural/ranch land.

Property Overview:

- Total Acreage: 936.89 acres (Tracts 1–4)
- Location: Conveniently located off I-25, midway between Santa Fe and Albuquerque
- Zoning/Use: Currently zoned agricultural/ranch land.

Tract Details:

- Tract 1 UPC: 1038083269200000000
- Legal Description: S8, S9, S16, S17 T14N R7E 307.1752 acres
- Tract 2 UPC: 1038082170410000000
- Legal Description: T14N R7E S17 209.871 acres
- Tract 3 UPC: 1038083352268000000
- Legal Description: T14N R7E S8 206.949 acres
- Tract 4 UPC: 1038083040386000000
- Legal Description: T14N R7E S8, Portion of Tract 4 212.895 acres

Highlights:

- Excellent visibility and access from the interstate
- Located between two of New Mexico's major markets
- Subdividable tracts offer flexibility for investors or developers
- Potential Water Rights Available
- Expansive open vistas and New Mexico landscapes

This property represents a significant investment opportunity for those seeking a large, accessible tract of land in a strategic central location.



8200 Carmel Ave NE STE 103-A, Albuquerque, NM 87122
505.292.8900

STEVE GRITCHEN
REALTOR® | Associate Broker
sgritchen@gmail.com
(505) 415-1554



NIKKI BRONSTORP
REALTOR® | Qualifying Broker
nikki.coldwellbl@gmail.com
c: (505) 209-1246

