

10.8± Acres of Industrial Land Available

South I-25 Corridor

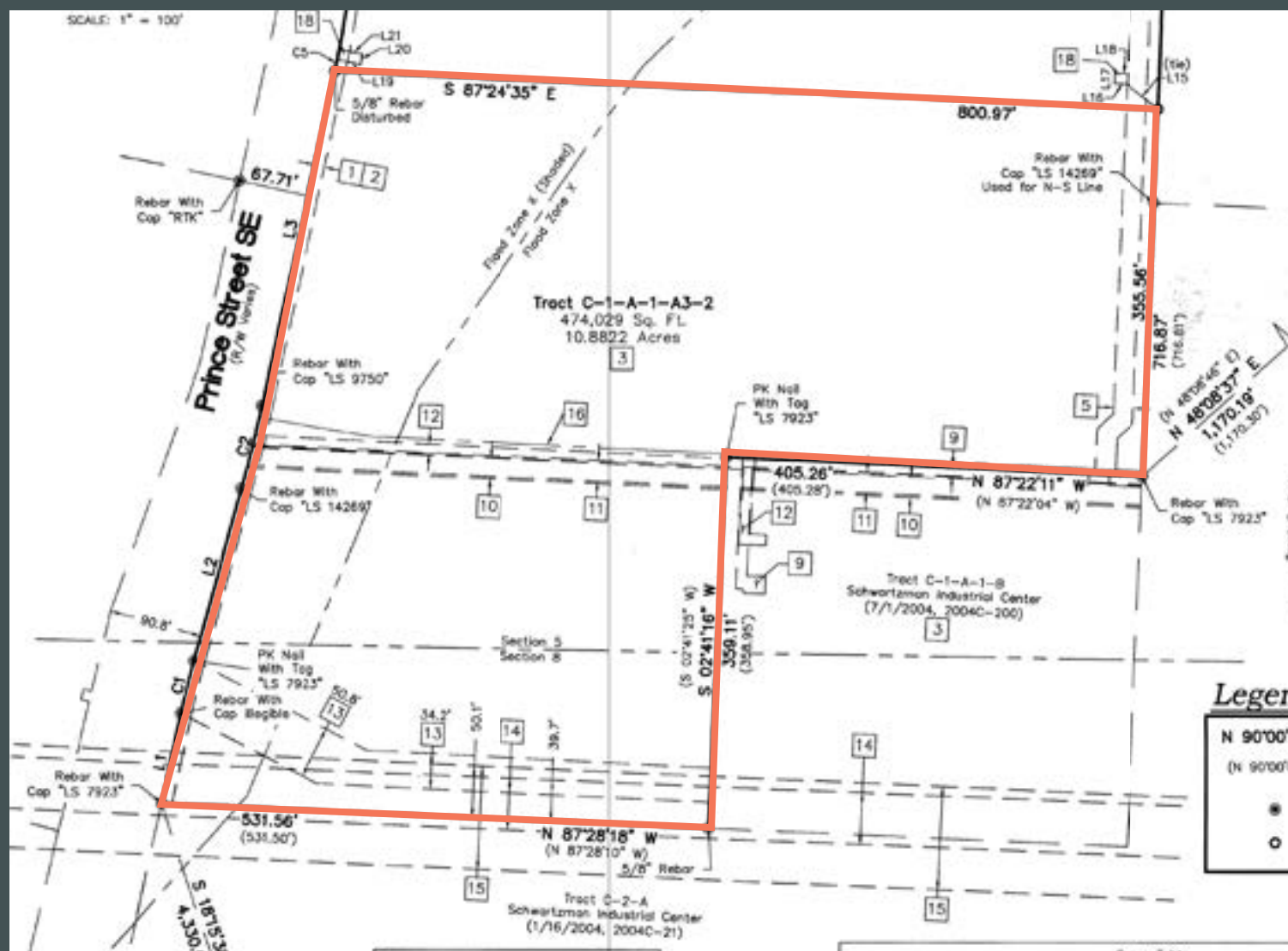
NEQ Prince Street SE & Rio Bravo Blvd SE
Albuquerque, NM 87105
www.cbre.com/albuquerque



NEQ Prince St SE & Rio Bravo Blvd SE
Albuquerque, NM 87105

For Sale

Survey



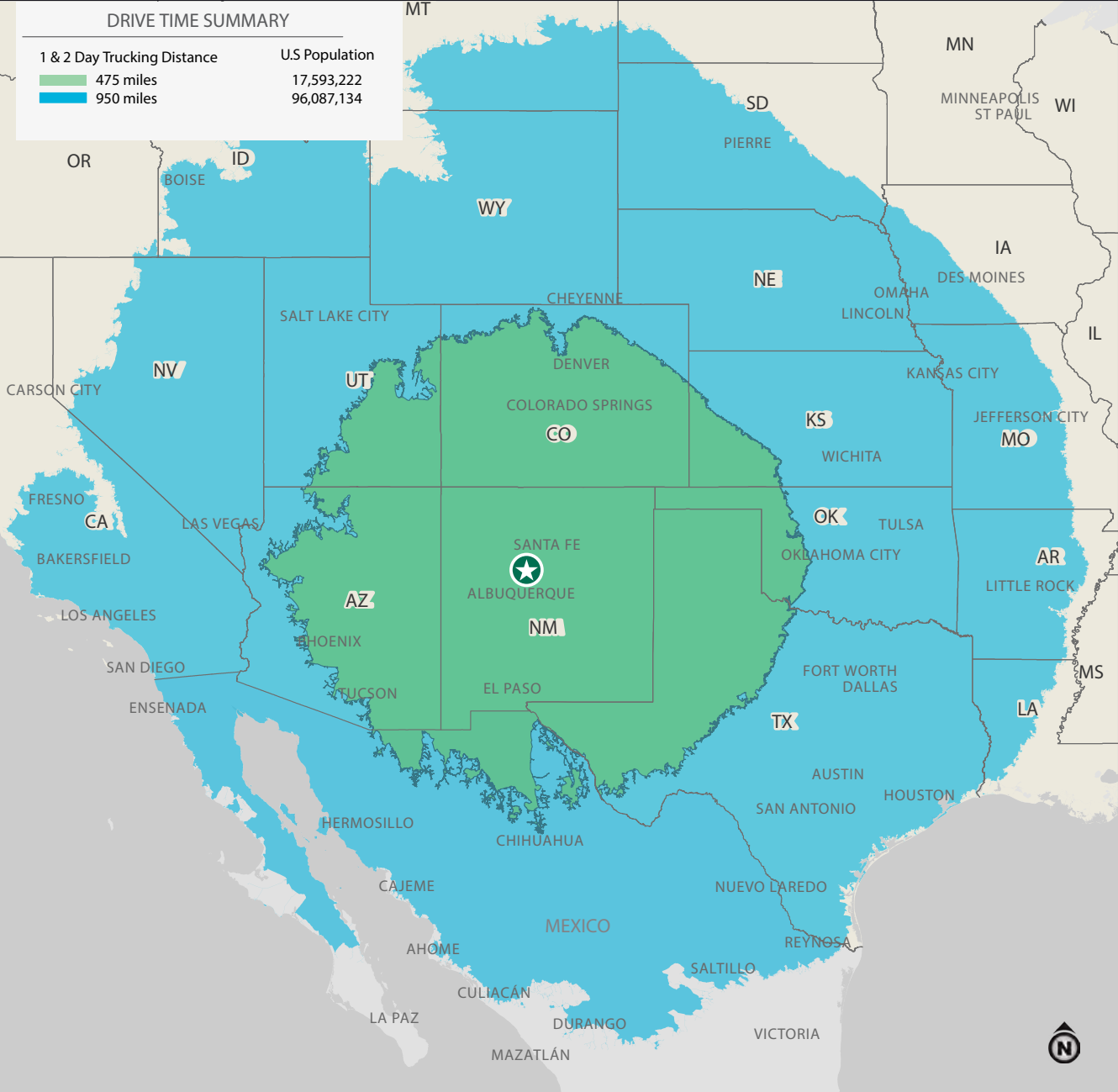
Available

- Industrial Land
 - Size: 10.8± Acres
 - Rate: \$7.25/SF

Property Highlights

- Located on the East side of Prince St. just North of Rio Bravo Blvd
- Easy access to I-25
- 11 minutes to Albuquerque International Airport
- M-2, Heavy Industrial, Bernalillo County

USA Map



One-Day Truck Service From Albuquerque

CITY	Miles	Time (est)
El Paso, TX	266	3 hr 50 min
Amarillo, TX	288	4 hr 16 min
Colorado Springs, CO	378	5 hr 29 min
Phoenix, AZ	419	6 hr 31 min
Denver, CO	448	6 hr 33 min
Tucson, AZ	449	6 hr 36 min

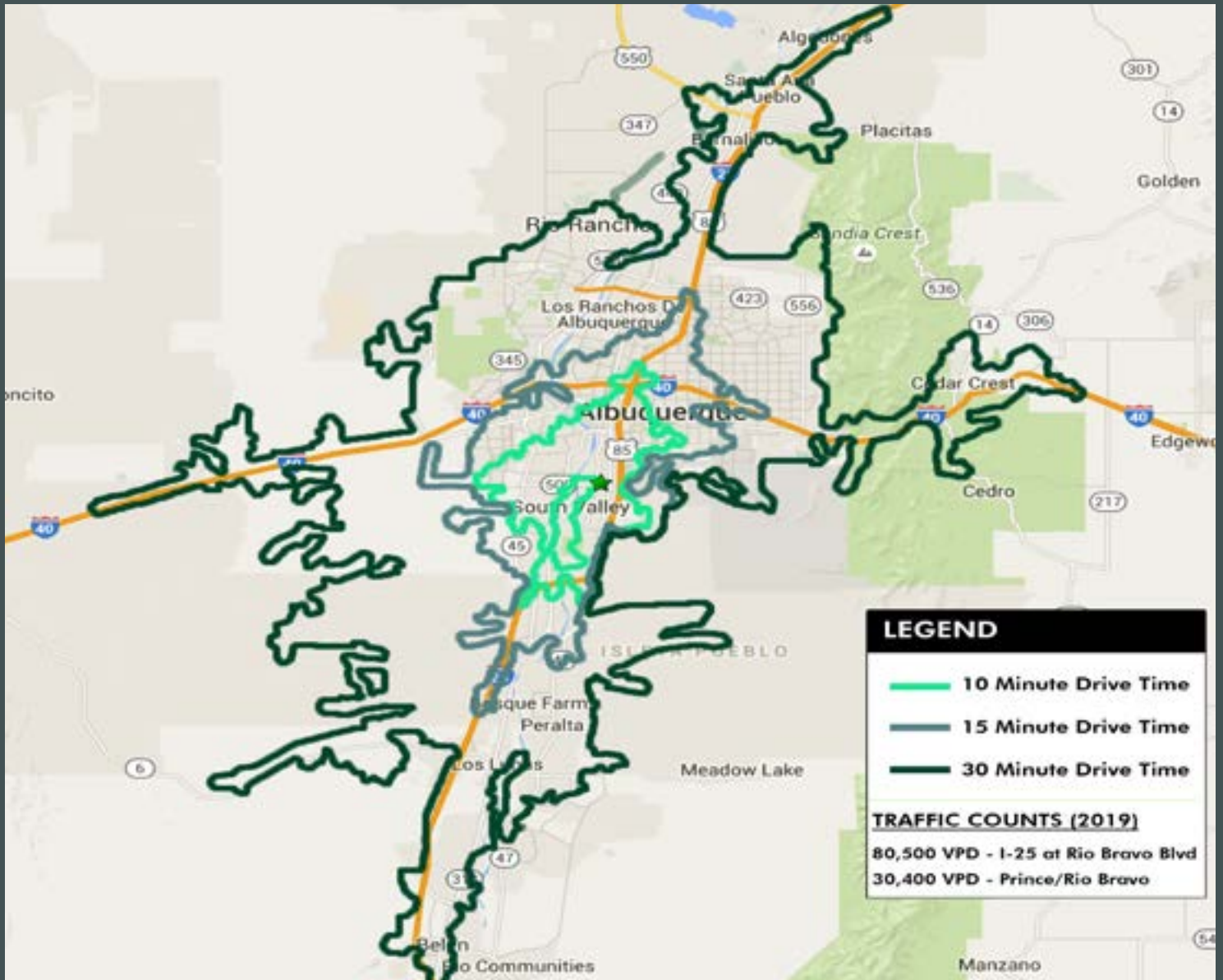
Two-Day Truck Service From Albuquerque

CITY	Miles	Time (est)
Las Vegas, NV	576	8 hr 34 min
Dallas, TX	649	9 hr 46 min
Salt Lake City, UT	667	9 hr 55 min
Los Angeles, CA	787	11 hr 53 min
San Diego, CA	772	12 hr 9 min
Little Rock, AR	882	13 hr 9 min
Houston, TX	841	13 hr 12 min

3725 Prince St SE
Albuquerque, NM 87105

For Sale

Drive Time Map



Contact Us

Jim Smith, CCIM, SIOR
First Vice President
+1 505 837 4923
jsmith@cbre.com

Brecken Mallette, SIOR
Vice President
+1 505 837 4914
brecken.mallette@cbre.com

© 2025 CBRE, Inc. All rights reserved. This information has been obtained from sources believed reliable, but has not been verified for accuracy or completeness. You should conduct a careful, independent investigation of the property and verify all information. Any reliance on this information is solely at your own risk. CBRE and the CBRE logo are service marks of CBRE, Inc. All other marks displayed on this document are the property of their respective owners, and the use of such logos does not imply any affiliation with or endorsement of CBRE. Photos herein are the property of their respective owners. Use of these images without the express written consent of the owner is prohibited. Updated 04/2025