

Ojo Caliente, New Mexico
Approximate: 368-400+- Acres / Subject to Survey
Three Structures include:
2-Warehouses & Shed
These Buildings are being sold "AS-IS"
Zoned County Rural Agricultural

\$1,339,000.00

These Hatched White Areas
Are Not Included
(Approximate Area)

GENERAL LOCATION
NOT A SURVEY

This area is approximately
160+- acres and includes the
warehouses

The Additional
Acreage Starts Here
See Below

The Brokerage Realty ABQ., LLC
Commercial Real Estate Brokerage

C: 505-480-7524

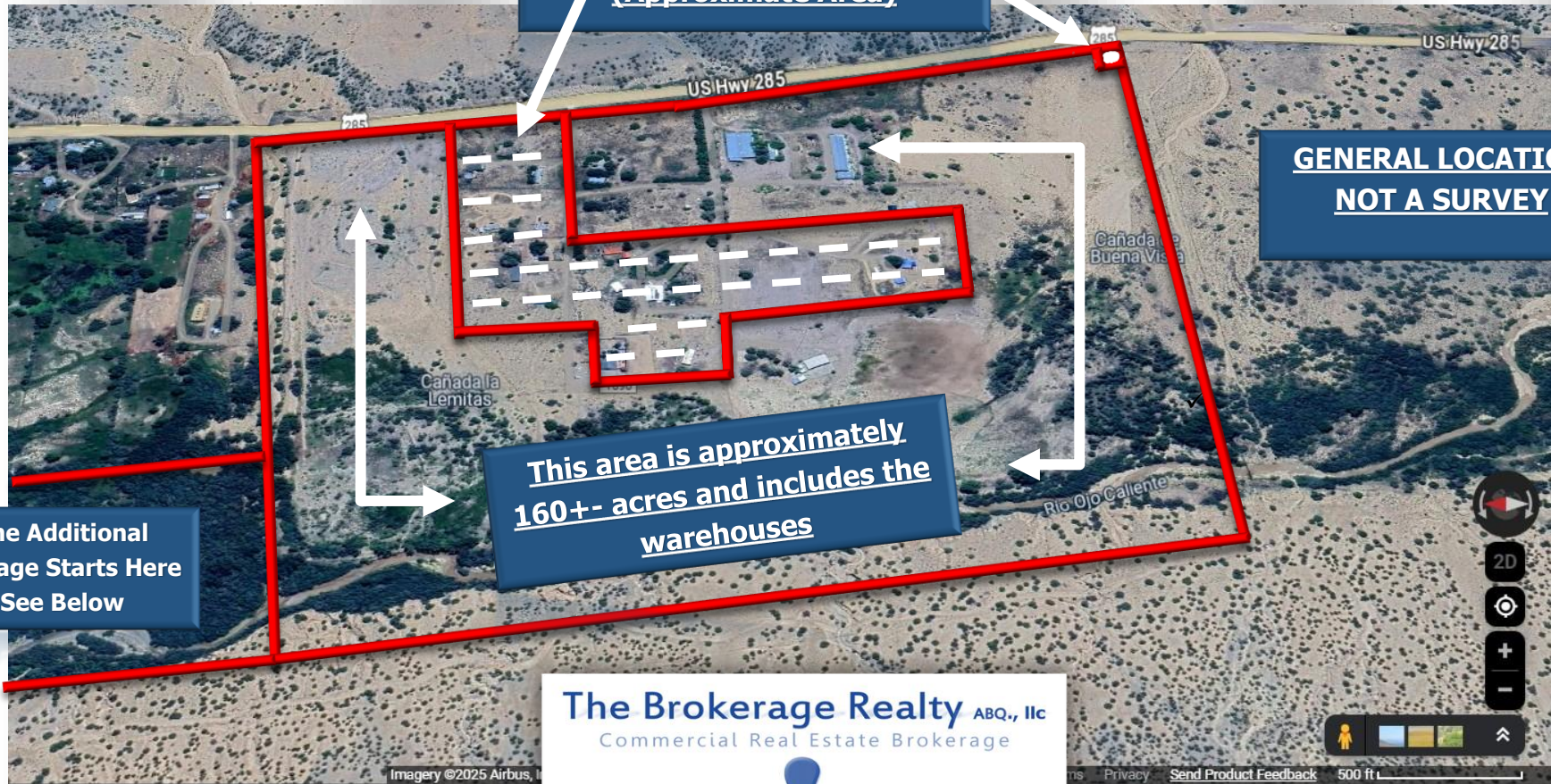


www.Acre9.com

Jeremy Gonzales-Qualifying Broker

6152 Deergass Circle NW Albuquerque, New Mexico 87120
Phone: 505-299-6983 Fax: 505-459-0969

SiteSelect@hotmail.com



North building 14,000+- sq ft
South building 12,000+- sq ft
Middle 2,700+- sq ft

These are approximate square
footages

Prospects are encouraged to have the
buildings professionally measured if
exact size is necessary

Google Aerial Link
([Click Here](#))

YouTube Video Links

Exterior of all three buildings

([Click Here](#))

North building interior

([Click Here](#))

North building front exterior

([Click Here](#))

North building drive

([Click Here](#))

South building exterior

([Click Here](#))

South building interior

([Click Here](#))

Middle building walk exterior

([Click Here](#))

Middle building exterior

([Click Here](#))

North Building



South Building



Middle Building



The Brokerage Realty ABQ., LLC
Commercial Real Estate Brokerage

C: 505-480-7524

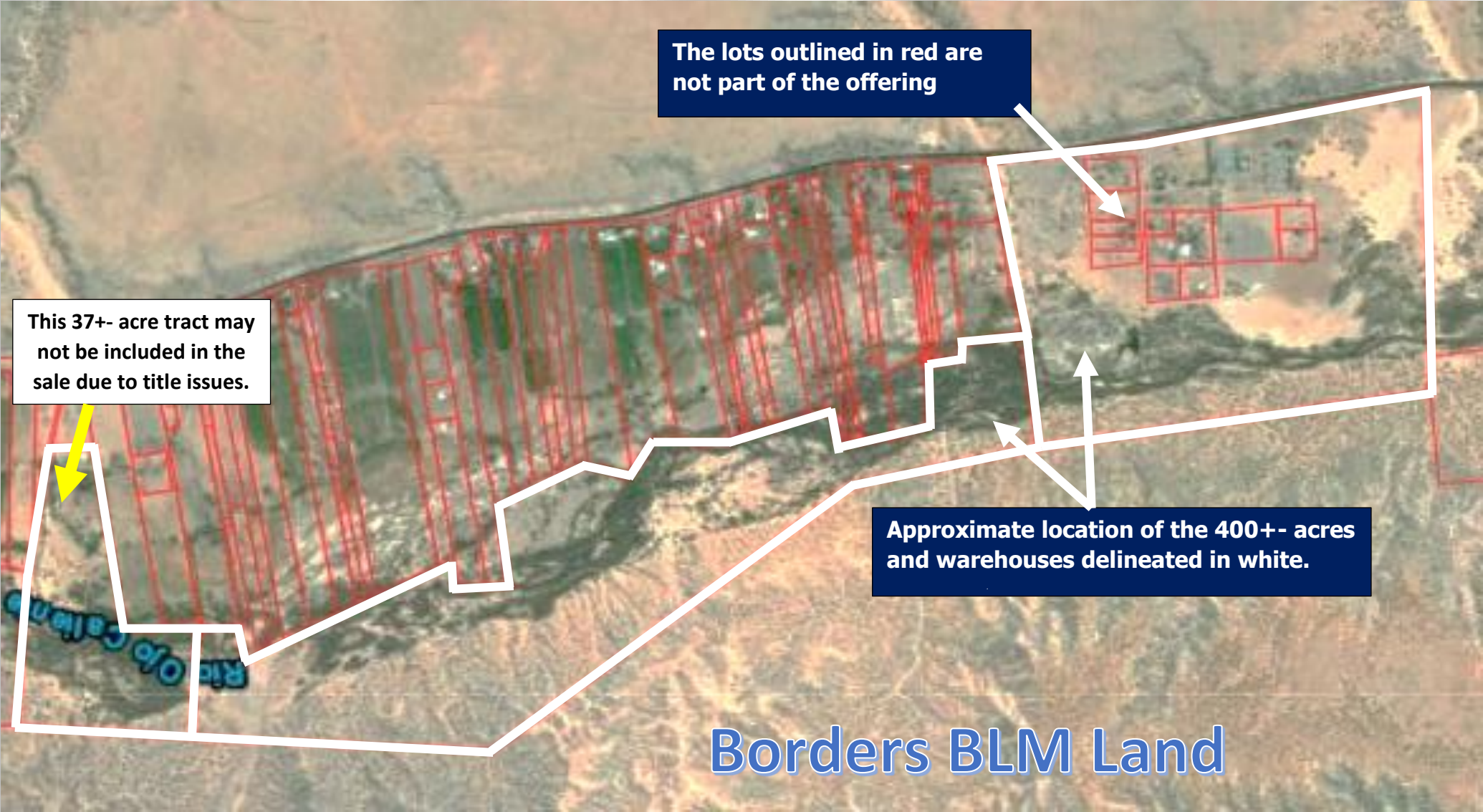


www.Acre9.com

Jeremy Gonzales-Qualifying Broker

6152 Deergrass Circle NW Albuquerque, New Mexico 87120
Phone: 505-299-6983 Fax: 505-459-0969

SiteSelect@hotmail.com



The lots outlined in red are not part of the offering

An aerial photograph of a landscape with various terrain features. A large area is outlined in white, and within it, several smaller areas are outlined in red. A yellow arrow points to a specific area within the white outline. A blue label 'Rico Caltana' is visible in the bottom left corner. Three text boxes with arrows provide additional context: one pointing to red-outlined lots, one pointing to a specific area within the white outline, and one pointing to the white outline itself. The text 'Borders BLM Land' is at the bottom.

This 37+- acre tract may not be included in the sale due to title issues.

Approximate location of the 400+- acres and warehouses delineated in white.

Borders BLM Land

The Brokerage Realty ABQ., LLC
Commercial Real Estate Brokerage

C: 505-480-7524  www.Acre9.com

Jeremy Gonzales-Qualifying Broker
6152 Deergass Circle NW Albuquerque, New Mexico 87120
Phone: 505-299-6983 Fax: 505-459-0969
SiteSelect@hotmail.com



THE INFORMATION CONTAINED HEREIN HAS BEEN OBTAINED FROM SOURCES DEEMED RELIABLE, THOUGH WE DO NOT DOUBT THE ACCURACY OF THE INFORMATION, IT IS NOT GUARANTEED. THIS INFORMATION IS SUBMITTED SUBJECT TO ERRORS, OMISSIONS, CHANGE(S) IN PRICE, TERMS, CONDITIONS, PRIOR SALES, OR WITHDRAWAL FROM THE MARKET WITHOUT NOTICE. BROKERS MAKE NO GUARANTEE OR WARRANTIES, EITHER EXPRESS OR IMPLIED AS TO THE COMPLETENESS OR ACCURACY OF THE INFORMATION CONTAINED HEREIN. IT IS THE RESPONSIBILITY OF THE READER TO INDEPENDENTLY CONFIRM THE ACCURACY AND COMPLETENESS OF THE INFORMATION CONTAINED HEREIN.