

Fidelity Square

Shopping Center @ NEC Candelaria Rd. & Wyoming Blvd.
2740 Wyoming Blvd. NE Albuquerque, NM 87111



BASE 5
RETAIL PARTNERS



**LISTING
BROKER**

Ariana West

ariana@base5retail.com - 505.235.0637

6739 Academy Rd NE, Suite 380 • Albuquerque, NM 87109

505.807.0605 • WWW.BASE5RETAIL.COM



BASE 5
RETAIL PARTNERS

Site Details

FIDELITY SQUARE

2740 Wyoming Blvd. NE, Albuquerque, NM 87111



AVAILABLE

Suite 6: 4,000 SF, \$14/SF + NNN

- Established neighborhood center located at the NE corner of Wyoming and Candelaria.
- Strong demographic trade area.

ZONING

MX-L (Mixed-Use Low Intensity)

SIGNAGE

Monument signage available on Wyoming.

ACCESS

Great! Access off of Wyoming

- Located in one of Albuquerque's strongest demographic trade areas with over 141,472 people in a 3 mile area and includes 119,600 daytime employees.
- Great neighborhood center. The majority of existing tenants have been in the center for more than 15 years.

**LISTING
BROKER**

Ariana West • ariana@base5retail.com • 505.235.0637

505.807.0605 • WWW.BASE5RETAIL.COM



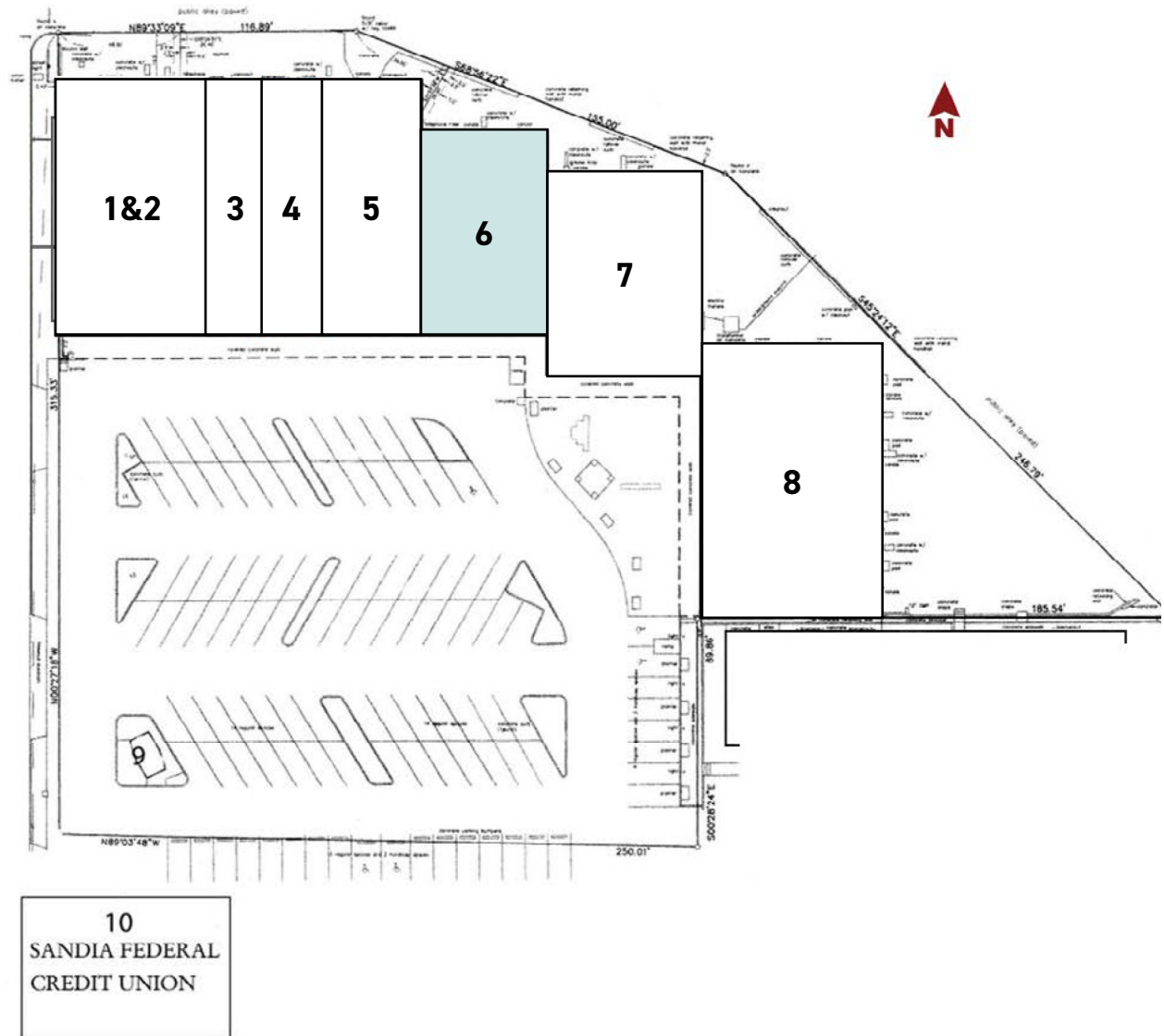
BASE 5
RETAIL PARTNERS

Site Plan

FIDELITY SQUARE

2740 Wyoming Blvd. NE, Albuquerque, NM 87111

SPACE	TENANT	SF
1 & 2	VCA Animal Hospital	5,030
3	Ting's Wellness Massage	1,850
4	Poochini's Pet Grooming	2,210
5	Leslie's Pool Supplies	4,710
6	AVAILABLE	4,000
7	La Dolce Vita	4,800
8	Bibles Plus	7,424



**LISTING
BROKER**

Ariana West • ariana@base5retail.com • 505.235.0637

505.807.0605 • WWW.BASE5RETAIL.COM

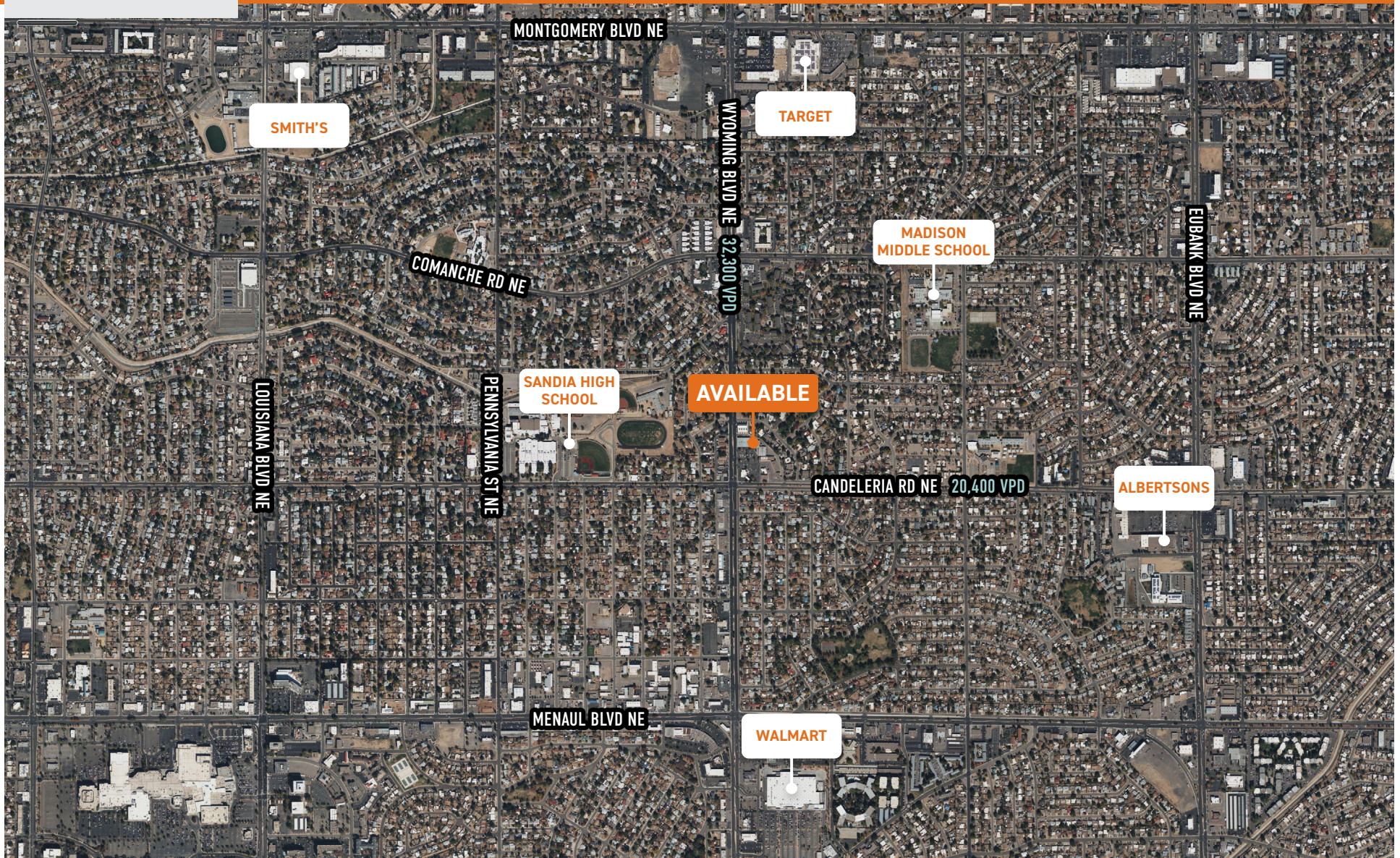


BASE 5
RETAIL PARTNERS

Aerial

FIDELITY SQUARE

2740 Wyoming Blvd. NE, Albuquerque, NM 87111



**LISTING
BROKER**

Ariana West • ariana@base5retail.com • 505.235.0637

505.807.0605 • WWW.BASE5RETAIL.COM

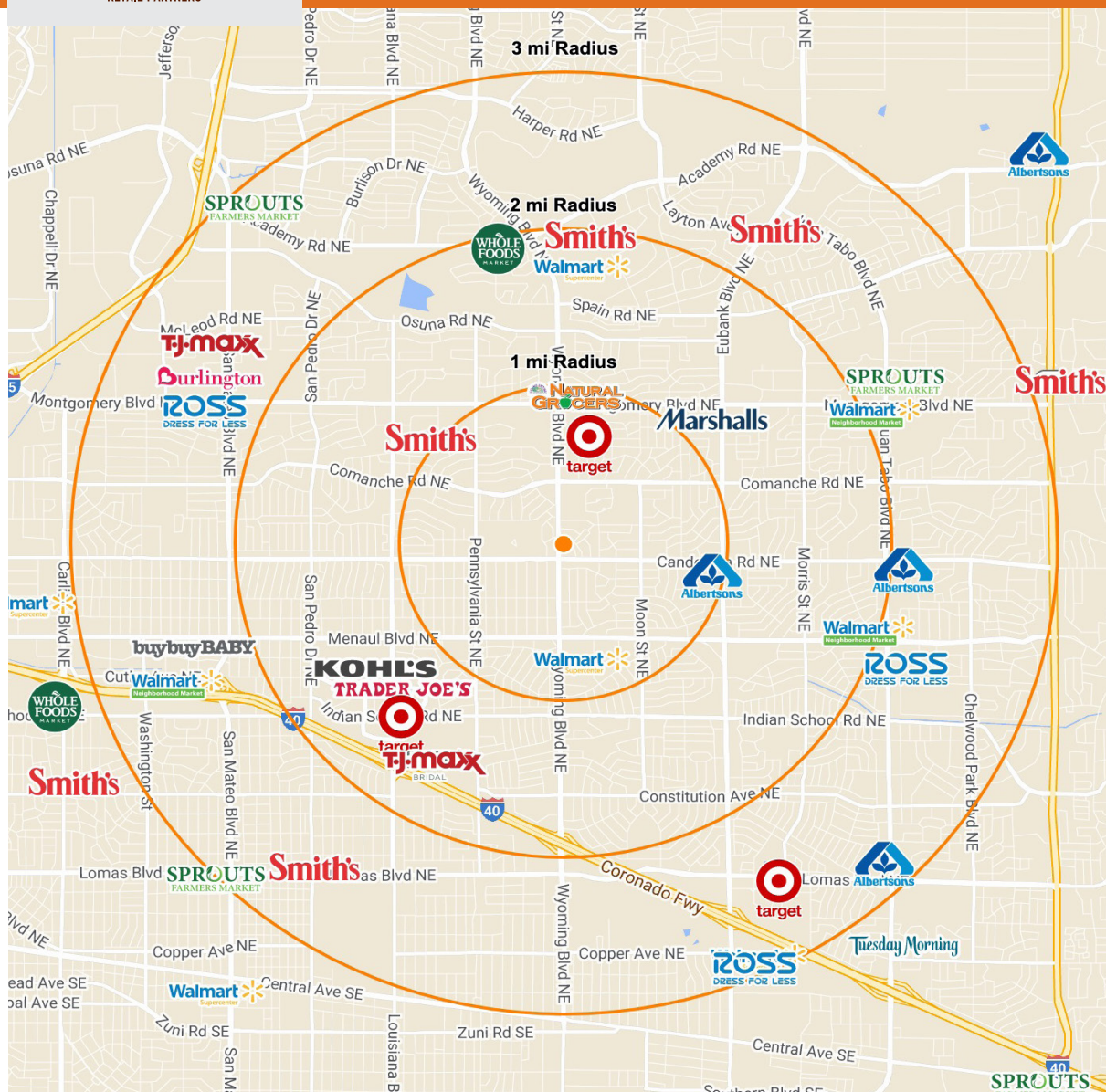


BASE 5
RETAIL PARTNERS

Radius Map

FIDELITY SQUARE

2740 Wyoming Blvd. NE, Albuquerque, NM 87111



POPULATION

1 MILE
15,394

3 MILES
142,657

5 MILES
305,348



INCOME

1 MILE
\$66,985

3 MILES
\$70,978

5 MILES
\$77,631



EMPLOYEES

1 MILE
13,013

3 MILES
119,600

5 MILES
255,143



TRAFFIC

WYOMING
32,300 VPD

CANDALERIA
20,400 VPD

**LISTING
BROKER**

Ariana West • ariana@base5retail.com • 505.235.0637

505.807.0605 • WWW.BASE5RETAIL.COM



BASE 5
RETAIL PARTNERS

Overview

FIDELITY SQUARE

2740 Wyoming Blvd. NE, Albuquerque, NM 87111



- Located in one of Albuquerque's strongest demographic trade areas with over 141,472 people in a 3 mile area.
- Includes 119,600 daytime employees in a 3 mile area.
- Great neighborhood center. The majority of existing tenants have been in the center for more than 15 years.
- Within one block of Sandia High School.

LET'S CHAT

ARIANA WEST

ariana@base5retail.com

505.235.0637



REALTY
RESOURCES
MEMBER

LISTING
BROKER

Ariana West • ariana@base5retail.com • 505.235.0637

505.807.0605 • **WWW.BASE5RETAIL.COM**