



Gypsy Plaza

2842 HWY 14, MADRID, NM 87010

Gypsy Plaza

One-of-a-kind building in historic Madrid, NM

9 tenant spaces for shops and local businesses

1 live/work studio apartment

\$849,000

+/- 4,053 SF Building

+/- 14,625 SF Lot

*ALL SPACES ARE CURRENTLY LEASED

COMMERCIAL PROPERTIES, INC.

2019 GALISTEO ST. SUITE L-1
SANTA FE, NM 87505
(505) 216-1500

JAMES WHEELER, CCIM
(505) 470-8081 (CELL)
LICENSE #18725

www.CPI-NM.com





Gypsy Plaza

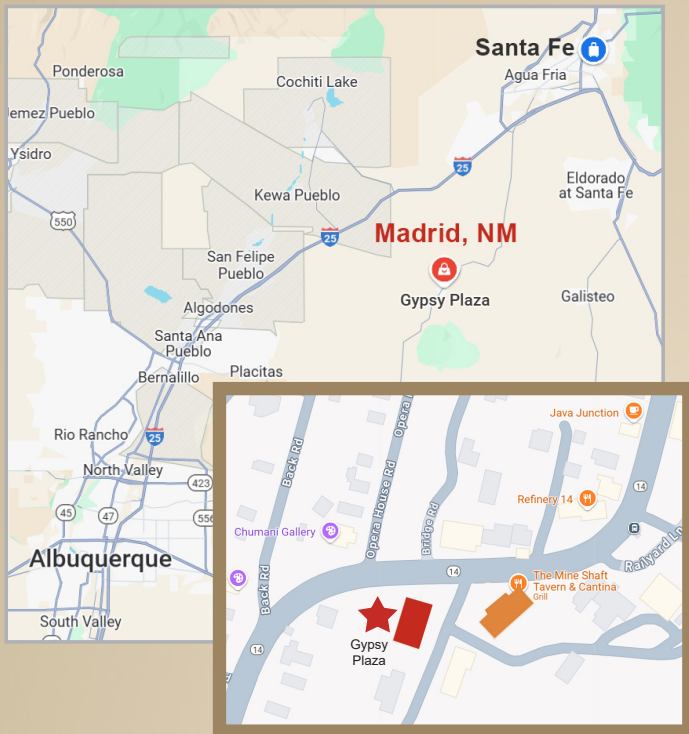
~ Across from Mineshaft Tavern ~

2842 Hwy 14, Madrid, NM 87010
at Firehouse Road

(9) unique retail and gallery units
(1) live/work studio apartment

Leased to long-term reliable tenants

- Village Grocer
- Thrift Store
- Local Realtor
- Astrologist & Psychic
- Beads, Stones & Jewelry
- Handmade Chocolate Shop
- Chiropractor & Healing Arts
- Artist Studios & Galleries
- Creative Classes & Events Space



COMMERCIAL PROPERTIES, INC.

2019 GALISTEO ST. SUITE L-1
SANTA FE, NM 87505
(505) 216-1500

JAMES WHEELER, CCIM
(505) 470-8081 (CELL)
LICENSE #18725

www.CPI-NM.com





COMMERCIAL PROPERTIES, INC.

2019 GALISTEO ST. SUITE L-1
SANTA FE, NM 87505
(505) 216-1500

JAMES WHEELER, CCIM
(505) 470-8081 (CELL)
LICENSE #18725

www.CPI-NM.com





COMMERCIAL PROPERTIES, INC.

2019 GALISTEO ST. SUITE L-1
SANTA FE, NM 87505
(505) 216-1500

JAMES WHEELER, CCIM
(505) 470-8081 (CELL)
LICENSE #18725

www.CPI-NM.com





STUDIO APARTMENT - Exterior



STUDIO APARTMENT - Interior



UNIT 1 - CHOLLA PROPERTIES



UNIT 2 - DIVINE CONNECTIONS



UNIT 3, 4 - VILLAGE GREENGROCER



COMMERCIAL PROPERTIES, INC.

2019 GALISTEO ST. SUITE L-1
SANTA FE, NM 87505
(505) 216-1500

JAMES WHEELER, CCIM
(505) 470-8081 (CELL)
LICENSE #18725

www.CPI-NM.com





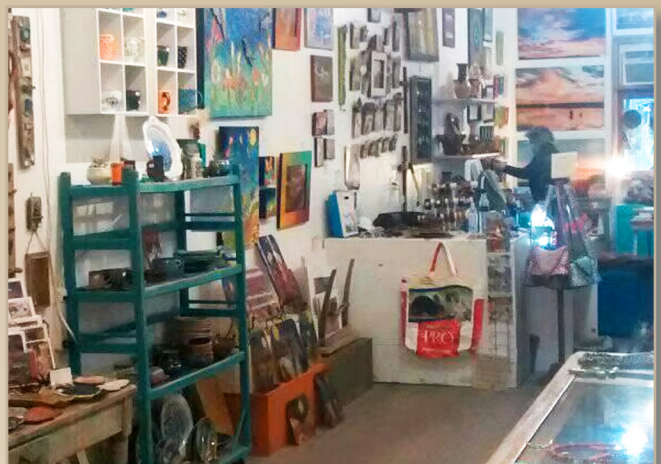
UNIT 5 - WANDER OUT YONDER



UNIT 6 - CHOCOLATE SHOP



UNIT 7 - MAD CONTEMPORARY ART CENTER



UNIT 8 - MOSTLY MADRID



UNIT 9 - ENCAUSTONE ARTIST STUDIO



UNIT 10 - CHIROPRACTOR OFFICE

COMMERCIAL PROPERTIES, INC.

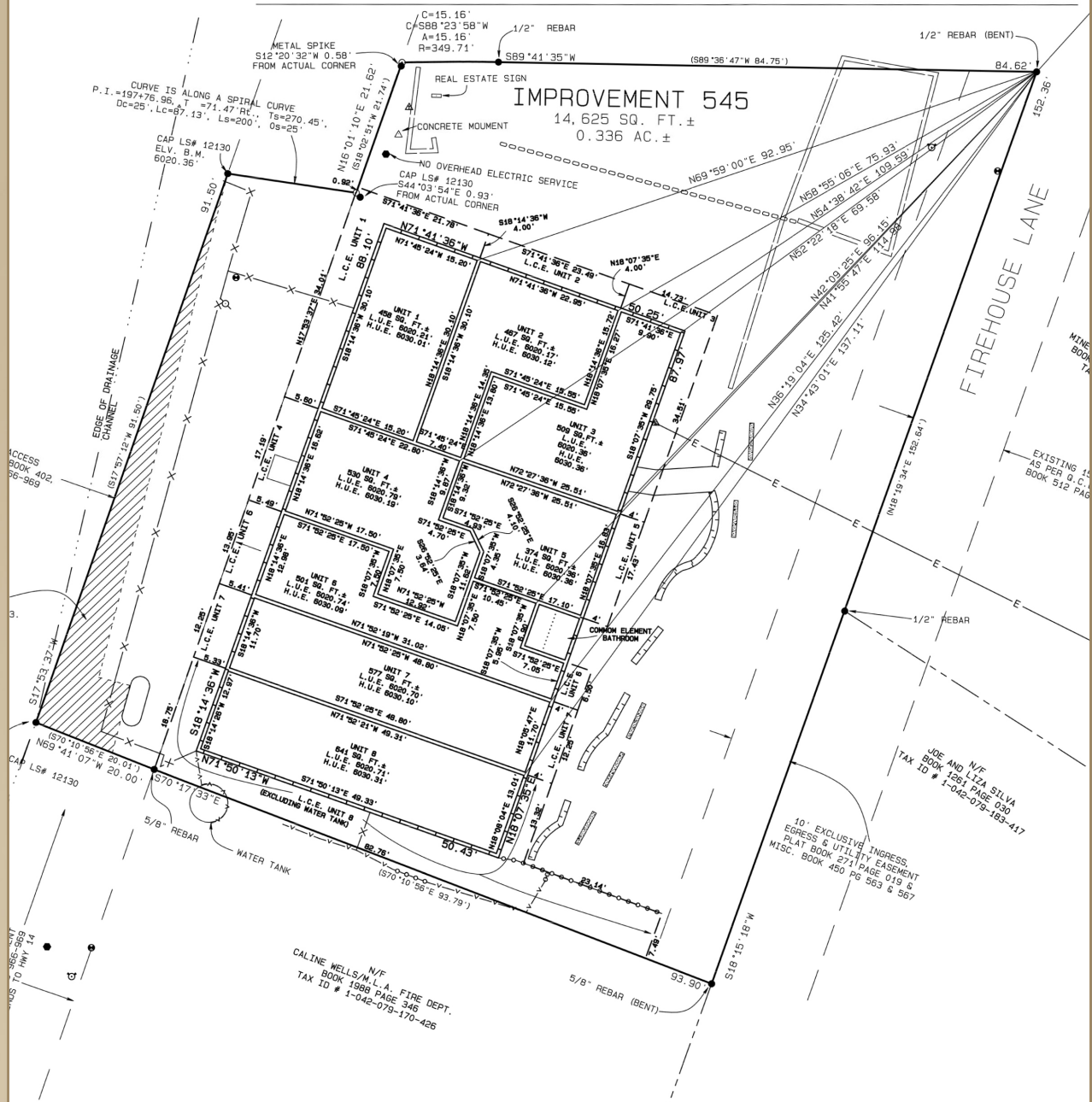
2019 GALISTEO ST. SUITE L-1
SANTA FE, NM 87505
(505) 216-1500

JAMES WHEELER, CCIM
(505) 470-8081 (CELL)
LICENSE #18725

www.CPI-NM.com



STATE HIGHWAY 14



COMMERCIAL PROPERTIES, INC.

2019 GALISTEO ST. SUITE L-1
SANTA FE, NM 87505
(505) 216-1500

JAMES WHEELER, CCIM
(505) 470-8081 (CELL)
LICENSE #18725

www.CPI-NM.com

