



**LEASE**

# 1515 Golf Course Rd. SE

**1515 GOLF COURSE RD. SE**

Rio Rancho, NM 87124

---

**PRESENTED BY:**

**JANET HORTON**

O: 505.503.2631

[janet.horton@svn.com](mailto:janet.horton@svn.com)

NM #55004



PROPERTY SUMMARY



OFFERING SUMMARY

LEASE RATE:	18.00 SF/yr (Full Service)
NUMBER OF UNITS:	8
AVAILABLE SF:	638 SF
LOT SIZE:	0.87 Acres
BUILDING SIZE:	9,849 SF

SPACES	LEASE RATE	SPACE SIZE
SUITE 102	\$18.00 SF/yr	637 SF

PROPERTY DESCRIPTION

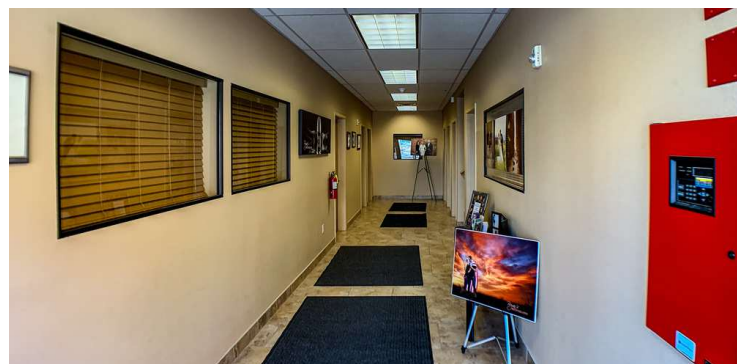
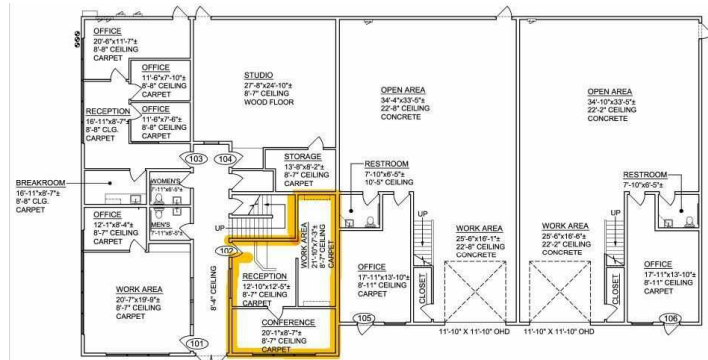
Located just one mile from Rust Presbyterian Hospital and minutes from Lovelace Hospital and Intel, this well-maintained office building offers prime visibility along the high-traffic corridor of Golf Course Road in Rio Rancho. The area’s office market remains strong, with limited availability, making this a rare opportunity for your business.

Suite 102 is a 637 RSF ground-floor suite featuring a welcoming reception area, one private office, and an additional workspace ideal for support staff or storage. The lease is full service, with electricity and gas included, offering convenience and value.

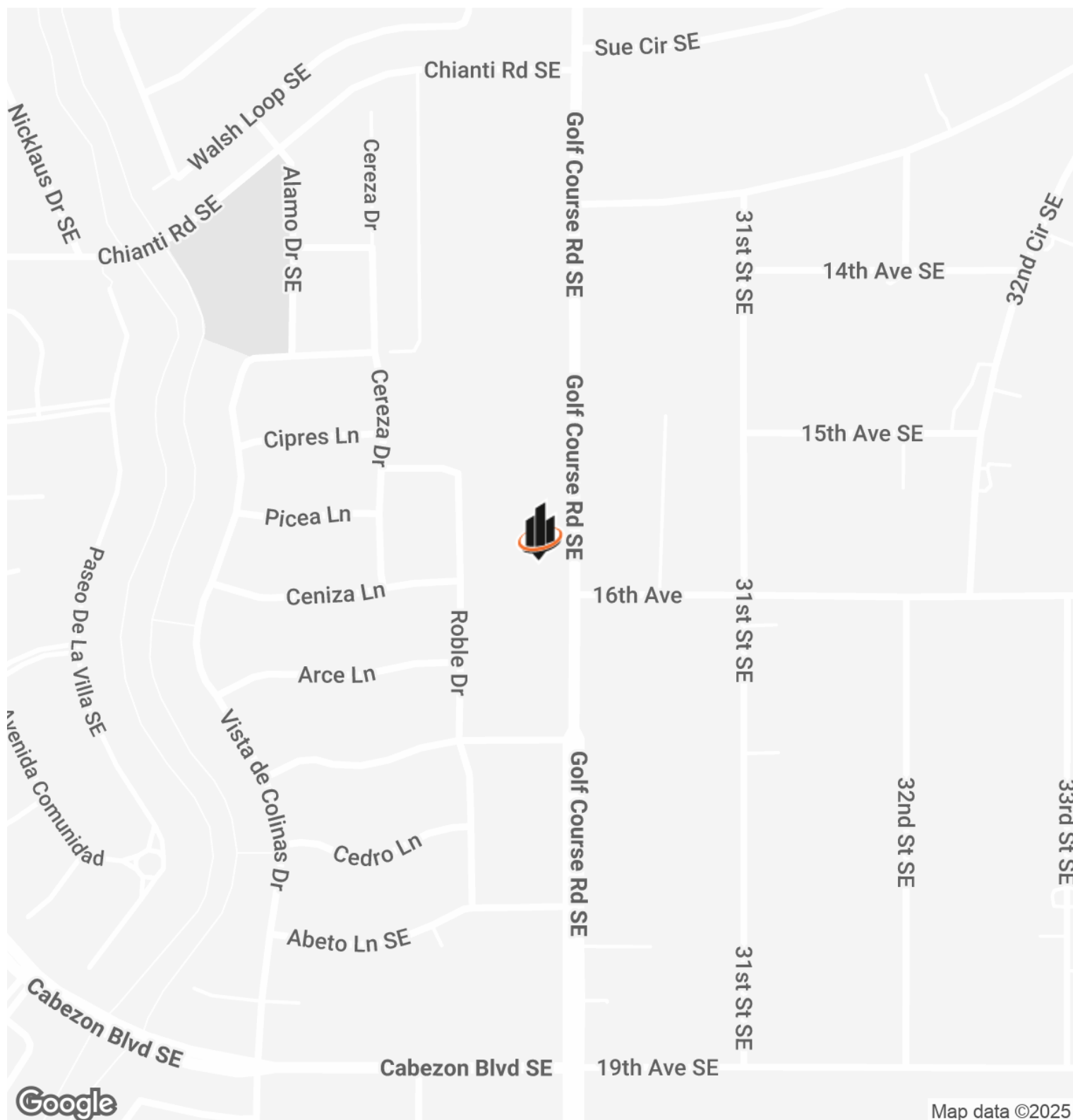
Enjoy quick access to all of Albuquerque’s west side from this highly accessible location. Don’t miss this chance to establish your business in a thriving, professional setting.

JANET HORTON  
O: 505.503.2631  
janet.horton@svn.com  
NM #55004

## A photograph of a modern, single-story commercial building with a flat roof and large windows. The building has a light-colored facade. In the foreground, there is a brick retaining wall and a paved area. A silver car is parked on the right side of the building. The sky is clear and blue.



## LOCATION MAP



**JANET HORTON**

O: 505.503.2631

janet.horton@svn.com

NM #55004