



Colliers

For Lease

St. Michael's Village West
1660 St. Michael's Dr
Santa Fe, NM 87507

Bob Feinberg

Sr. Vice President | Principal
+1 505 238 7707
bob.feinberg@colliers.com
Lic. No. 9916

Tom Jones, CCIM

Sr. Vice President | Principal
+1 505 880 7063
tom.jones@colliers.com
Lic. No. 37218

Colliers | New Mexico - El Paso
5051 Journal Center Blvd. NE, Suite 200
Albuquerque, NM 87109
Main: +1 505 883 7676
colliers.com

1660 St. Michael's Dr | For Lease

Property Profile

Details

Lease Rate \$15.00 PSF

Lease Type NNN

Available Space ± 11,964 SF

Zoning C2

Features

- Prominent junior anchor position opportunity
- Geographically located in the heart of Santa Fe
- Well maintained anchored shopping center along one of Santa Fe's major arterials
- Signalized intersection with multiple full movement access points
- High traffic volume corridor with excellent visibility
- Ample parking and excellent pylon signage available
- Mature and densely populated trade area
- Robust national/local retail and restaurant tenancy node
- Optimally situated within:
 - [Opportunity Zone](#)
 - [Metropolitan Redevelopment Agency \(MRA\)](#)
 - [Midtown Local Innovation Corridor Overlay District \(LINC\)](#)

Area Tenants



Trade Area Aerial

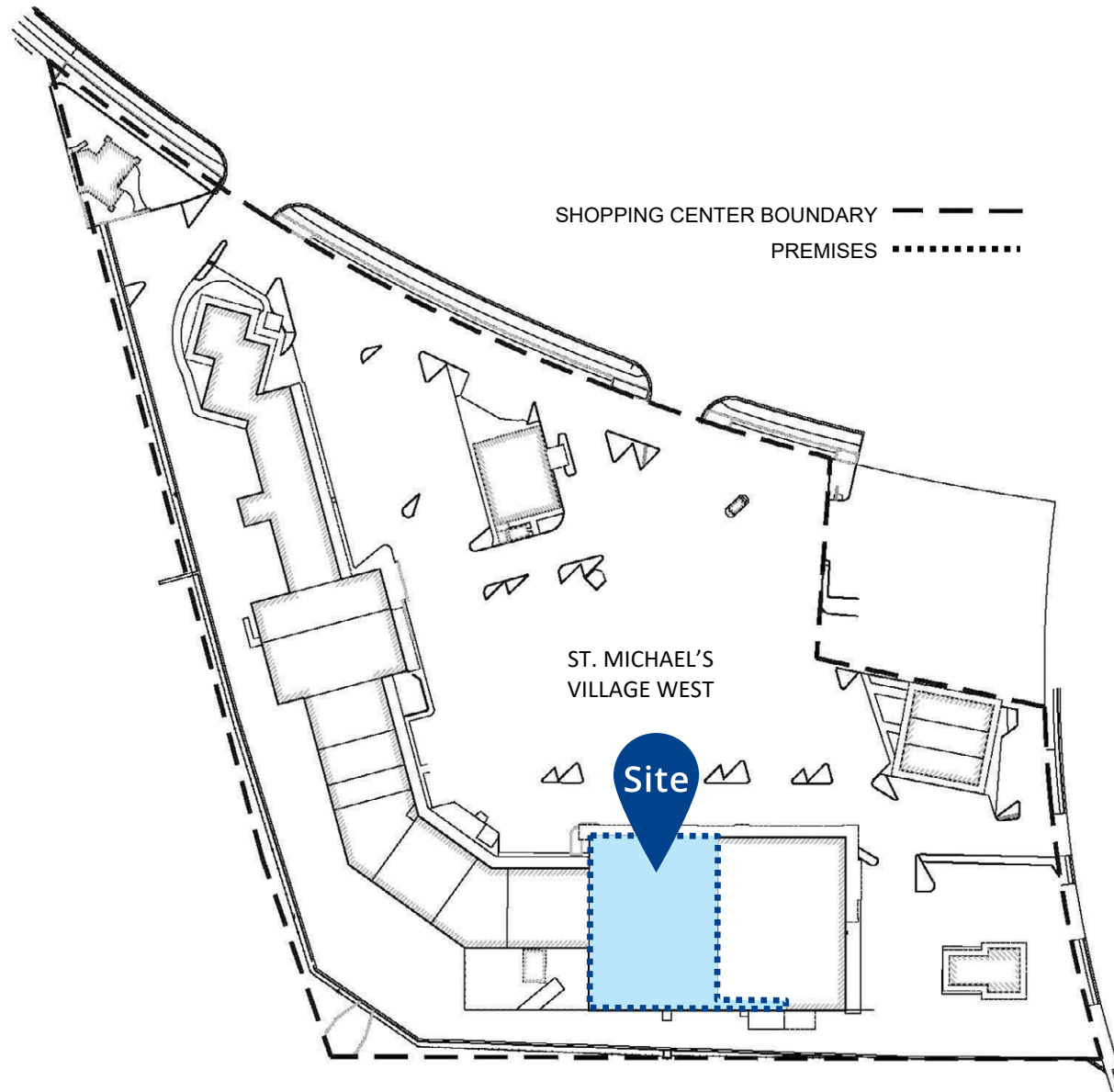


1660 St. Michael's Dr | For Lease

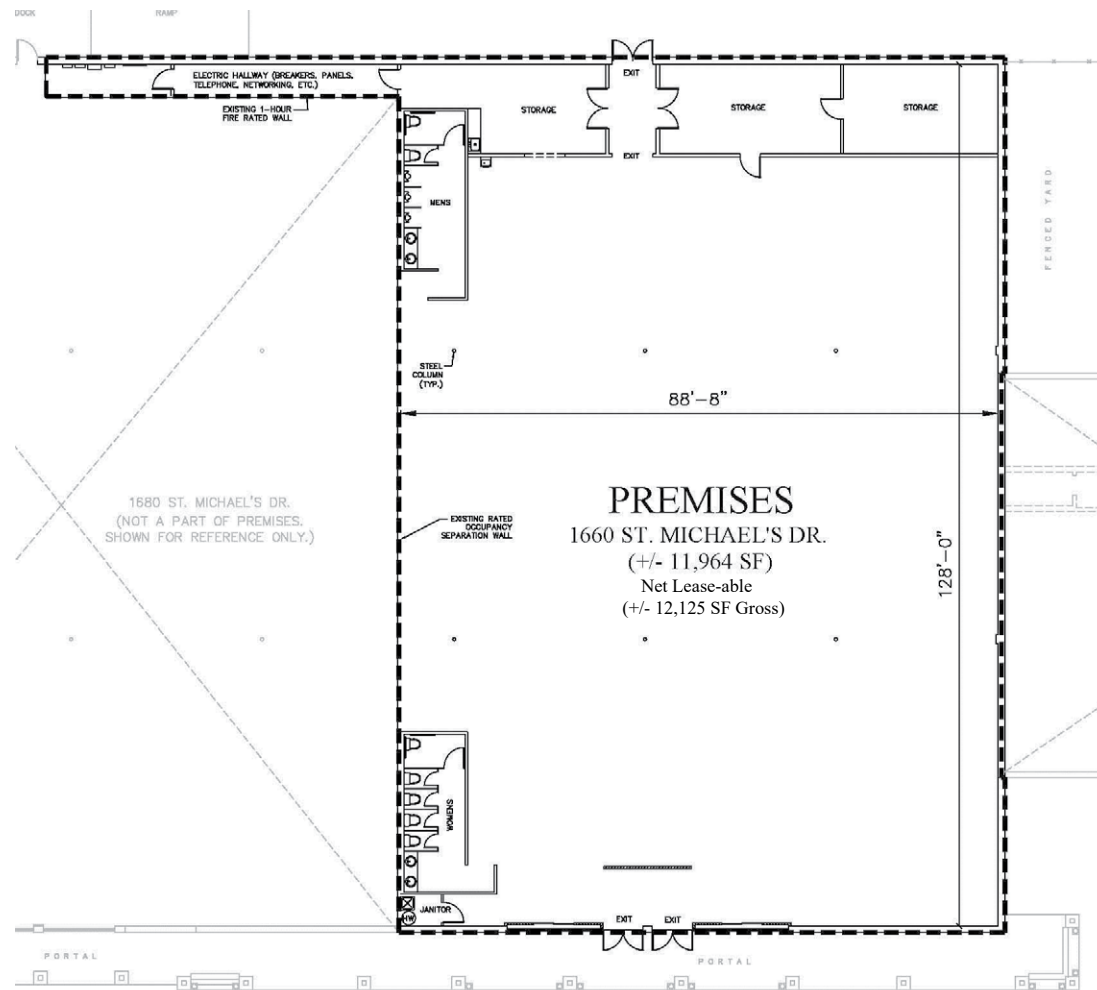
Intersection Aerial



Site Plan



Floor Plan



PREMISES



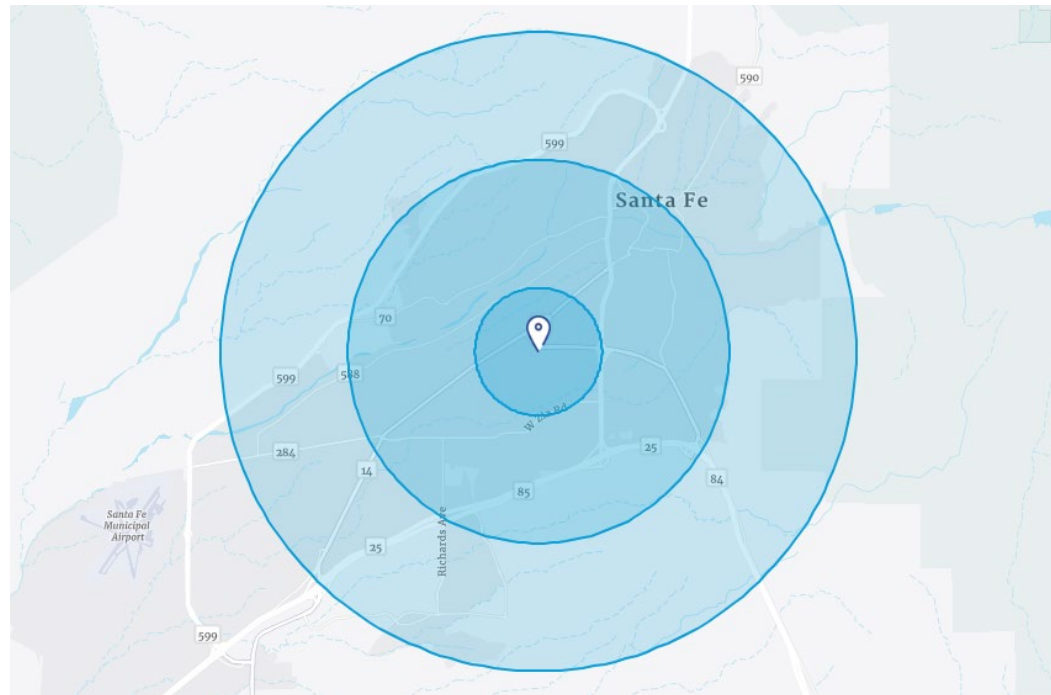
1660 ST. MICHAEL'S DR.*

(NTS)

(*APPROX. CONFIGURATION AND DIMENSIONS OF PREMISES AT LEASE COMMENCEMENT DATE. TENANT TO FIELD VERIFY ALL EXISTING CONDITIONS & DIMENSIONS.)

Demographics*

* Demographic data derived from esri® 2020



| | 1 Mile | 3 Miles | 5 Miles |
|-------------------|----------|-----------|-----------|
| Population | 11,892 | 58,419 | 95,946 |
| Households | 5,831 | 29,102 | 44,741 |
| Median HH Income | \$60,753 | \$76,266 | \$78,678 |
| Average HH Income | \$78,827 | \$108,767 | \$118,797 |