



Available for Lease | $\pm 28,000$ SF

903 E BENDER BLVD HOBBS, NM 88240



SERGIO CASTILLO
ASSOCIATE BROKER
SERGIO@ALLENSIGMON.COM
+1 505 469 2927



Property Overview

Located within the well-established Bel Aire Shopping Center, 903 E Bender Blvd in Hobbs, NM offers an exceptional retail leasing opportunity with approximately 28,000 square feet of space formerly occupied by Big Lots. Available at \$7.50 PSF plus NNN charges of \$1.65 PSF, this large-format space is ideal for a wide range of retail users. The Bel Aire shopping Center spans approximately 74,146 square feet and sits on a 6.29-acre lot with ample on-site parking. Constructed in 1959, the property is home to a strong mix of national and regional tenants including Family Dollar, Verizon, Tokyo Japanese Steak House, Elite Nails, Watermill Express, and Erika Becerra Lashes. The center is strategically positioned along East Bender Boulevard, near the signalized intersection at North Dal Paso Street, providing excellent visibility and accessibility in one of Hobbs' busiest commercial corridors. As the largest city in southeastern New Mexico, Hobbs serves as the primary retail hub for a region encompassing roughly 125,000 residents within a 55-mile radius, making this a prime location for retailers looking to tap into a broad and growing customer base.



PROPERTY DETAILS

Address	903 E Bender Blvd Hobbs, NM 88240
Location	E Bender Blvd & North Sal Paso Street
Building Type	Retail Building
Gross Leasable Area	±28,000 SF
Lease Type	Triple Net
Lease Rate	\$7.50 PSF + \$1.65 NNN
Lease Term	5 + Years
Land	6.29 Acres
Zoning	C-2
Parking	6.4/1000

2024 DEMOGRAPHIC SUMMARY

	1 MILE	3 MILES	5 MILES
EST. POPULATION	14,535	39,153	47,976
EST. HOUSEHOLDS EST.	5,281	13,854	16,771
AVG. HH INCOME	\$67,879	\$68,675	\$71,241

AREA ATTRACTIONS



TRAFFIC COUNTS

- 14,980 VEHICLES PER DAY ON E. BENDER BLVD
- 5,000 VEHICLES PER DAY ON N. DAL PASO STREET

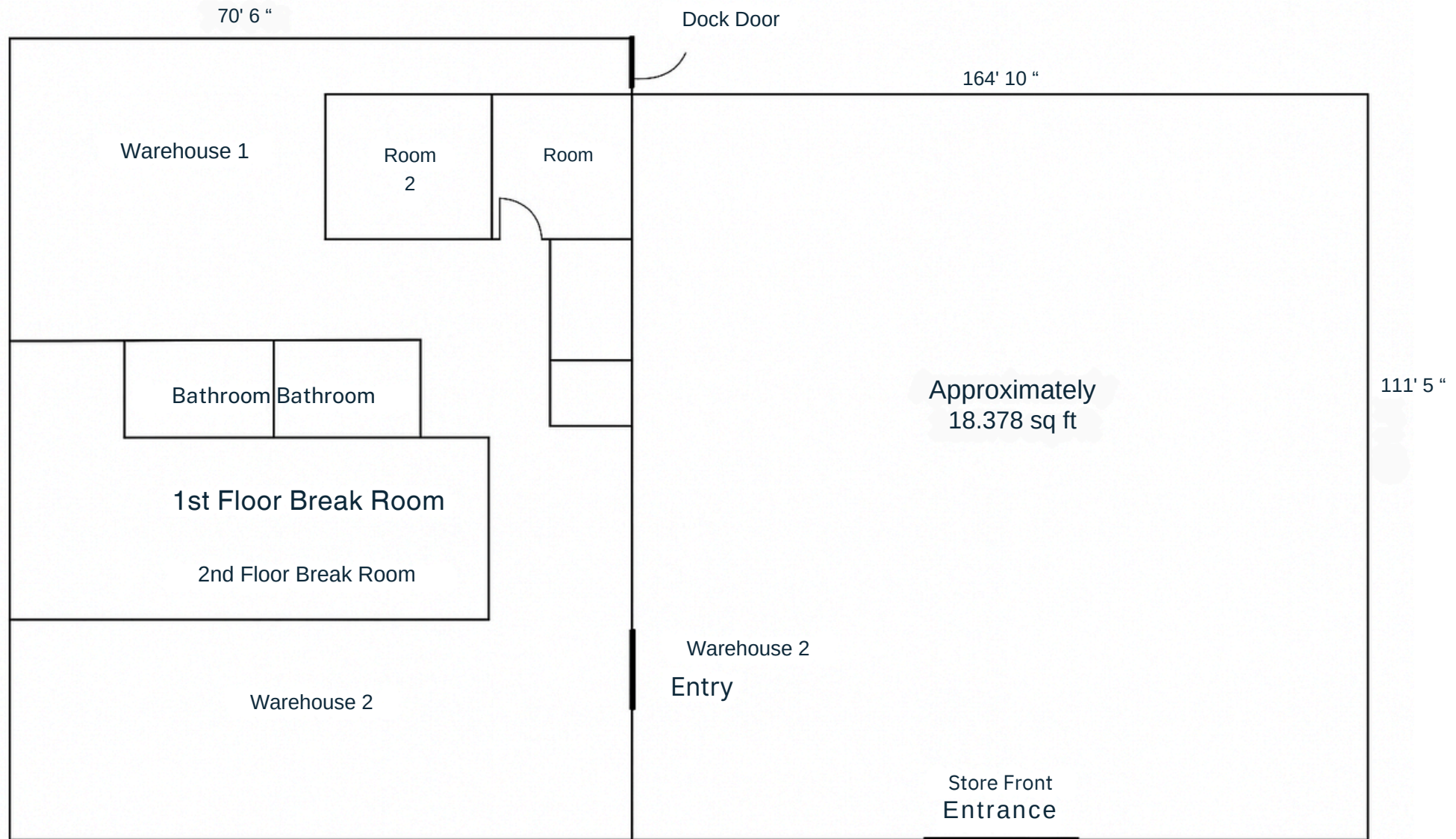
PROPERTY HIGHLIGHTS

- HIGH VISIBILITY ON EAST BENDER
- 74,146 SF MULTI-TENANT RETAIL CENTER
- DENSE NATIONAL RETAILER PRESENCE NEARBY
- LOCATED ON 6.29-ACRE CORNER LOT
- AMPLE PARKING



903 E BENDER BOULEVARD
HOBBS, NM 88240







Allen Sigmon

REAL ESTATE GROUP

ALLEN SIGMON REAL ESTATE GROUP

9201 MONTGOMERY BLVD NE, BLDG 1

ALBUQUERQUE NM 87111

T 505.884.4699 | F 505.503.1381

ALLENSIGMON.COM



SERGIO CASTILLO

ASSOCIATE BROKER

SERGIO@ALLENSIGMON.COM

+1 505 469 2927

The information provided herein is deemed reliable, however, its accuracy has not been verified, and no guarantee, warranty, or representation is made regarding its accuracy or completeness. It is incumbent upon the recipient to independently verify its accuracy and comprehensiveness. Any projections, opinions, assumptions, or estimates presented are for illustrative purposes only and do not constitute a representation of the current or future performance of the subject property. The efficacy of this transaction is contingent upon various factors, which should be assessed by qualified tax, financial, and legal advisors. The recipient and their advisors are advised to conduct a thorough independent investigation of the property to ascertain its suitability for their purposes.