

100%-Leased Investment Opportunity

THREE PROFESSIONAL OFFICE CONDOS FOR SALE

Offering
Memorandum]

Suite 106 | ±1,831 SF

Suite D | ±1,701 SF

Suite B | ±1,795 SF

±5,327 Combined SF
For Sale

Martha Carpenter

martha@sunvista.com | 505 228 0154

Lisa Mercer CCIM

lisa@sunvista.com | 505 235 8503

Shelly Branscom CCIM

shelly@sunvista.com | 505 414 2669

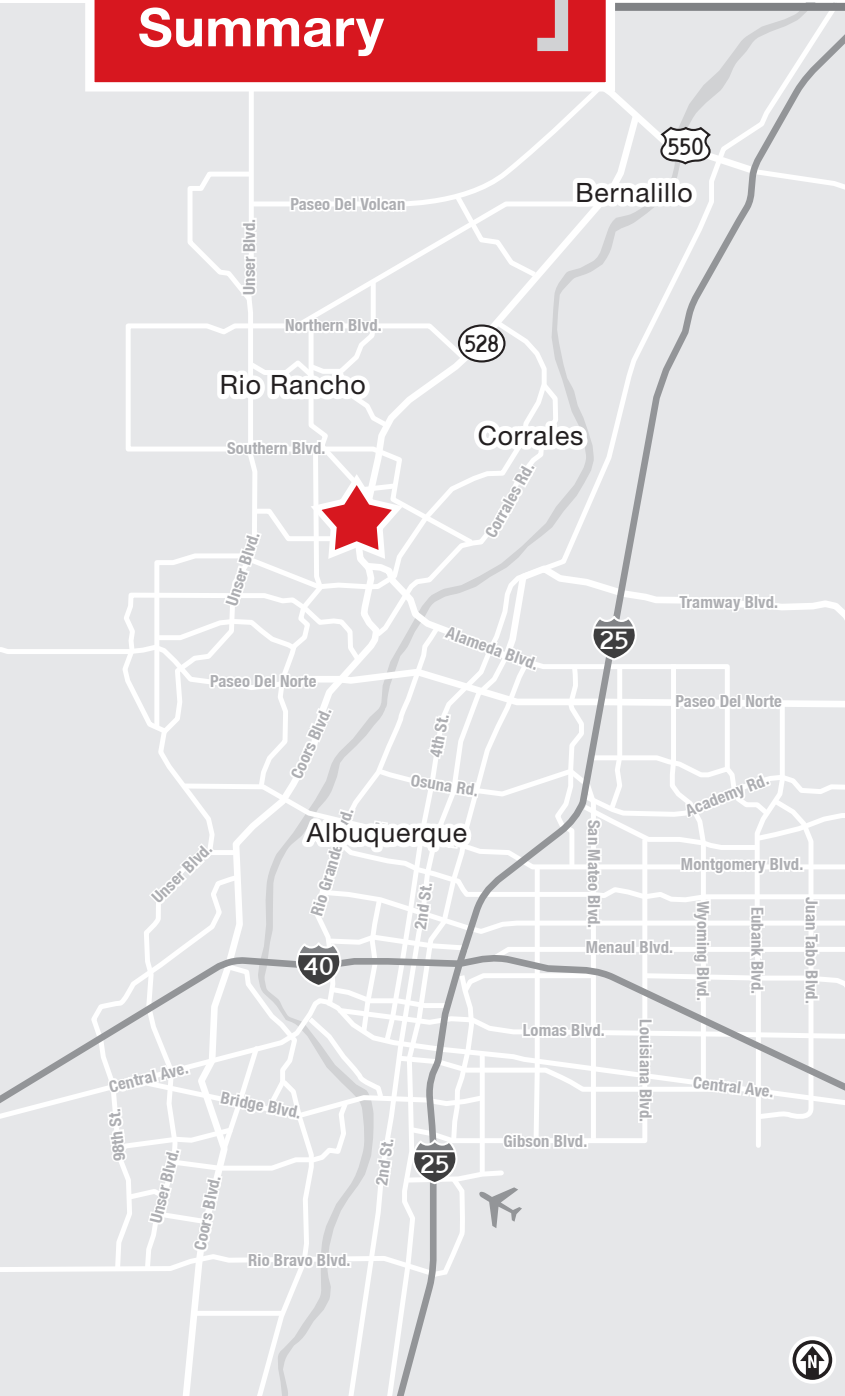
2240 & 2320 Grande Blvd. SE | Rio Rancho, NM 87124

NAISunVista] **Got Space™**

Opening the Door to Commercial Real Estate Excellence

Investment Summary

2240 & 2320 Grande Blvd. SE | Rio Rancho, NM 87124



Pricing

Sale Price	\$1,112,000
CAP Rate	6.5%

Mini-Pod

Rent Income	\$106,555
Less 5% Vacancy	\$5,328
Operating Expenses	\$28,467
Net Operating Income	\$72,759

Properties

2240 Grande Blvd. SE, Suite 106	SF: ±1,831
Tenant: Epiphany Dermatology	
Term: 07/01/2018 – 06/30/2027, 3 additional option years to 2036	
2320 Grande Blvd. SE, Suite B	SF: ±1,795
Tenant: Lovato Law	Term: 04/01/2024 – 03/31/2029
2320 Grande Blvd. SE, Suite D	SF: ±1,701
Tenant: Verdes Cannabis	Term: 10/01/2020 – 09/30/2030

- Three strong-credit, stable tenants
- Preference is to sell all three suites together
- **Please do not disturb tenants**

ZONING

- SU, City of Rio Rancho

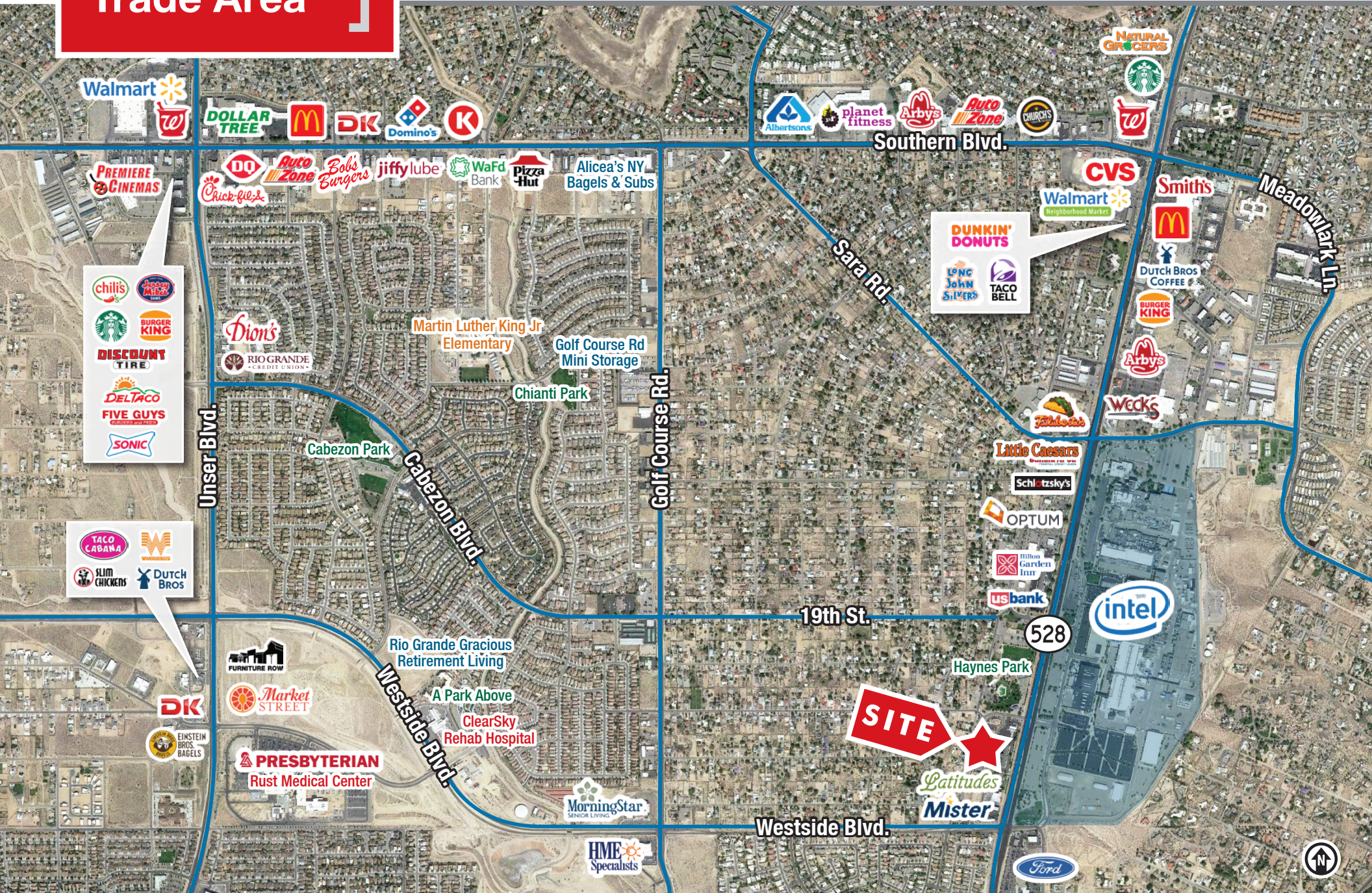
Location

2240 & 2320 Grande Blvd. SE | Rio Rancho, NM 87124



Trade Area

2240 & 2320 Grande Blvd. SE | Rio Rancho, NM 87124





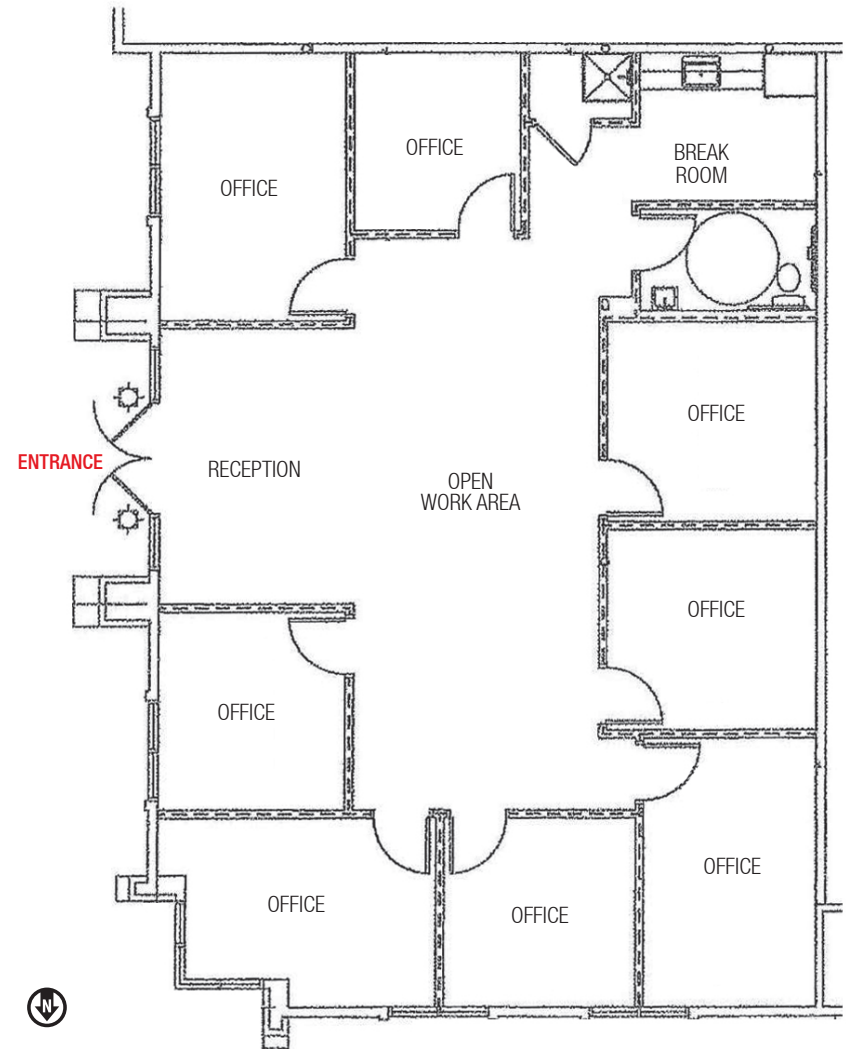
2240 - Suite 106



2240 - Suite 106

2240 GRANDE BLVD. SE

Suite 106: ±1,831 SF





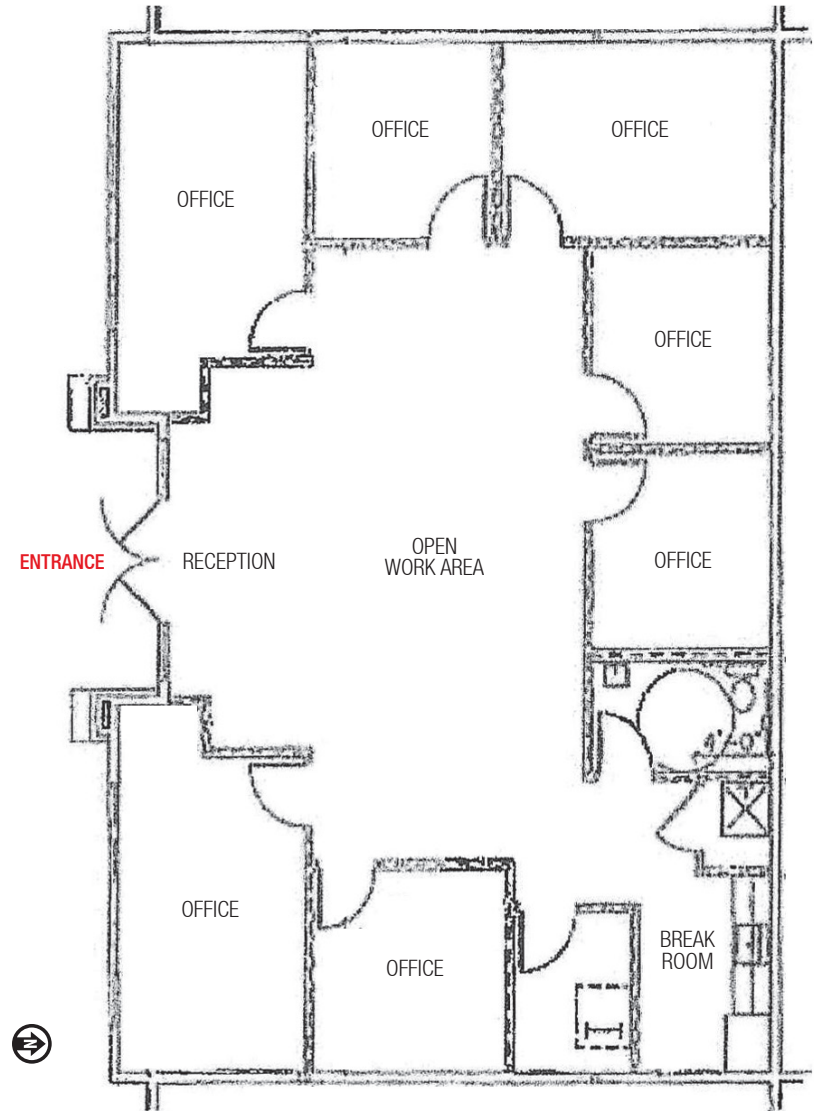
2320 - Suite B



2320 - Suite B

2320 GRANDE BLVD. SE

Suite B: ±1,795 SF





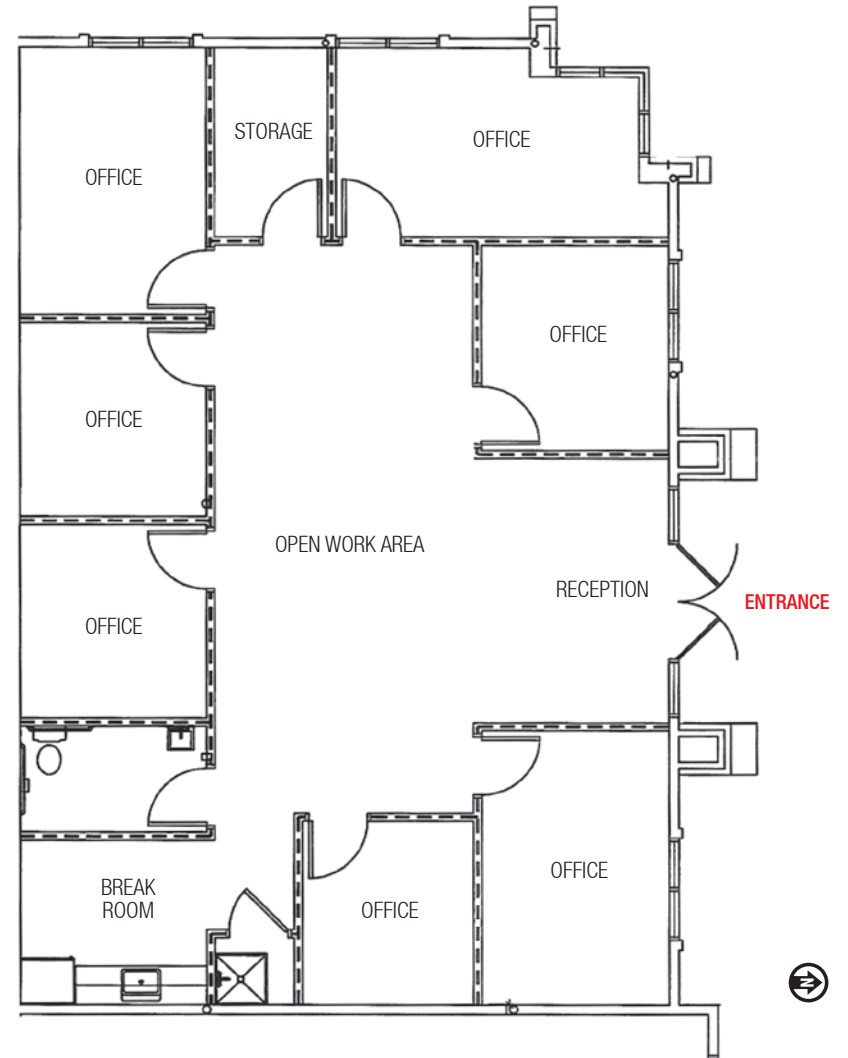
2320 - Suite D



2320 - Suite D

2320 GRANDE BLVD. SE

Suite D: ±1,701 SF



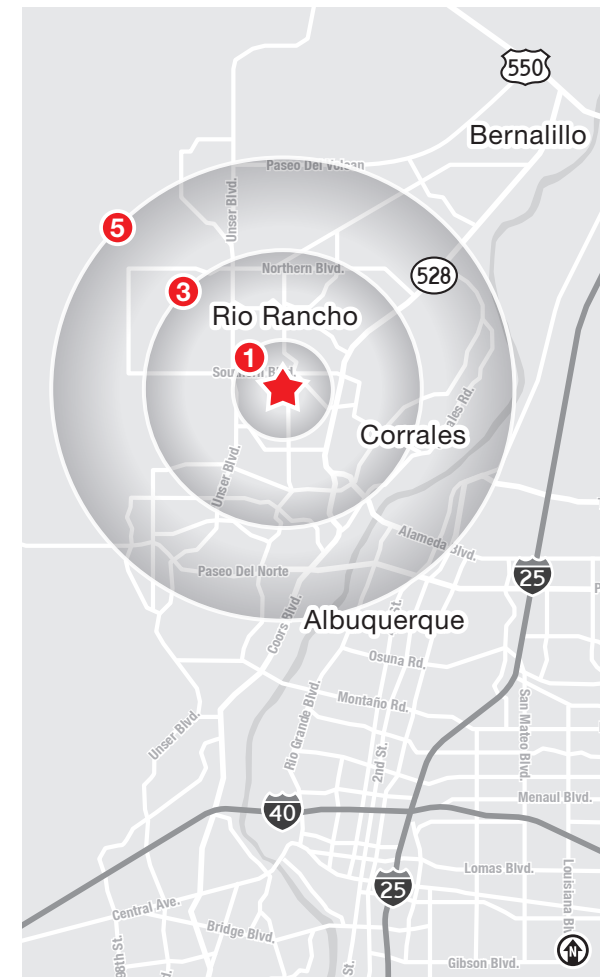
DEMOGRAPHICS | 1, 3 & 5 MILE

	1 Mile		3 Mile		5 Mile	
Summary	2025		2025		2025	
Population	9,081		83,295		168,851	
Households	3,718		33,762		66,691	
Families	2,316		21,664		44,473	
Average Household Size	2.43		2.44		2.51	
Owner Occupied Housing Units	2,357		23,873		50,197	
Renter Occupied Housing Units	1,361		9,889		16,494	
Median Age	40.2		41.4		41.0	
Trends: 2025-2030 Annual Rate	State		State		State	
Population	0.32%		0.32%		0.32%	
Households	0.45%		0.45%		0.45%	
Families	0.26%		0.26%		0.26%	
Owner HHs	0.59%		0.59%		0.59%	
Median Household Income	2.54%		2.54%		2.54%	
Households by Income	2025		2025		2025	
	Number	Percent	Number	Percent	Number	Percent
<\$15,000	190	5.1%	1,757	5.2%	3,596	5.4%
\$15,000 - \$24,999	199	5.4%	1,814	5.4%	3,377	5.1%
\$25,000 - \$34,999	141	3.8%	1,796	5.3%	3,440	5.2%
\$35,000 - \$49,999	439	11.8%	3,126	9.3%	6,314	9.5%
\$50,000 - \$74,999	823	22.1%	6,111	18.1%	12,376	18.6%
\$75,000 - \$99,999	633	17.0%	4,674	13.8%	9,146	13.7%
\$100,000 - \$149,999	560	15.1%	5,922	17.5%	11,974	18.0%
\$150,000 - \$199,999	472	12.7%	4,545	13.5%	8,757	13.1%
\$200,000+	261	7.0%	4,018	11.9%	7,709	11.6%
Median Household Income	\$76,942		\$85,431		\$84,861	
Average Household Income	\$97,529		\$113,677		\$113,169	
Per Capita Income	\$40,890		\$45,917		\$44,837	

DEMO SNAP SHOT

	1 mile	3 mile	5 mile
Total Population	9,081	83,295	168,851
Average HH Income	\$97,529	\$113,677	\$113,169
Daytime Employment	2,906	29,584	55,981

2025 Forecasted by Esri



RIO RANCHO | THE CITY OF VISION

The City of Rio Rancho is part of the Albuquerque Metropolitan Statistical Area. At less than 45 years old, Rio Rancho is considered the fastest-growing city in New Mexico. The City is strategically located in the northwest quadrant of the MSA and comprises more than 100 square miles of land. The City is just 45 minutes from Santa Fe, the cultural center of the Southwest. Rio Rancho's adjacency to Albuquerque allows it to draw from the largest labor pool in New Mexico — approximately 400,000 workers. The metro area offers a capable and quality workforce to prospective employers.



Fastest
Growing City in
New Mexico



RIO RANCHO BY THE NUMBERS (ESRI 2025 Demographics)



114,160
City Population



42,536
Households



\$110,047
Avg. Household Income



\$69,330
Md. Disposable Income



2,339
Total Businesses



26,418
Total Employees

Rio Rancho is a High-Growth, Underserved Trade Area



Intel Corporation is investing **\$3.5 billion** to upgrade and expand its Rio Rancho operations.



- More than **1,000 new homes** in development
- High-income neighborhoods and schools
- Limited land in Albuquerque



Presbyterian Rust Medical Center is planning to expand to 1.2 million SF. It's currently 63% complete and 25 years ahead of schedule.



A commitment to quality of life with new parks such as A Park Above, Black Arroyo Wildlife Park and Gateway Park



STRENGTHS

- ↑ Rio Rancho is a business-friendly city
- ↑ Low crime rates
- ↑ Excellent public education system
- ↑ Diverse housing options
- ↑ Growing list of quality-of-life amenities

CHALLENGES

- ↓ Rio Rancho experiences significant retail leakage of approx. **\$400 million** into the City of Albuquerque.

OPPORTUNITIES

- ➔ Investors can bridge the gap of needs and retail services in Rio Rancho



OFFERED EXCLUSIVELY BY:



Martha Carpenter

martha@sunvista.com
505 228 0154



Lisa Mercer CCIM

lisa@sunvista.com
505 235 8503



Shelly Branscom CCIM

shelly@sunvista.com
505 414 2669



505 878 0001 | sunvista.com

2424 Louisiana Blvd. NE | Suite 100 | Albuquerque, NM 87110

This marketing brochure has been prepared to provide summary, unverified information to prospective purchasers, and to establish only a preliminary level of interest in the subject property. The information contained herein is not a substitute for a thorough due diligence investigation. Some photos in this brochure may not be those of the actual property.

NAI SunVista has not made any investigation, and makes no warranty or representation, with respect to the income or expenses for the subject property, the future projected financial performance of the property, the size and square footage of the property and improvements, the presence or absence of contaminating substances, PCBs or asbestos, the compliance with state and federal regulations, the physical condition of the improvements thereon, or the financial condition or business prospects of any tenant, or any tenant's plans or intentions to continue its occupancy of the subject property. The information contained in this marketing brochure has been obtained from sources we believe to be reliable. However, NAI SunVista has not verified, and will not verify, any of the information contained herein, nor has NAI SunVista conducted any investigation regarding these matters and makes no warranty or representation whatsoever regarding the accuracy or completeness of the information provided. All potential buyers must take appropriate measures to verify all of the information set forth herein.

All property showings are by appointment only. Please consult a NAI SunVista Advisor for more details.