

For Sale

Vacant Land

1.15 +/- & 1.68 +/- AC



Retail Pad Site

3701 N Main St

Roswell, New Mexico 88201

Property Highlights

- Excellent Visibility
- Zoning: Commercial
- Half a mile South from Walmart Super Center
- Great location for a restaurant, fast food or retail user
- Close proximity to Walmart, Sam's Club, and Roswell Regional Mall

Property Features

The significant frontage on Main Street gives this parcel excellent visibility and access to the major thoroughfare in the city of Roswell. The property is located in close proximity to the major retailers hub which includes WalMart, Sam's Club and regional mall. This Pad Site has strong potential for retail, restaurant or hospitality clients.

OFFERING SUMMARY

Sale Price	\$6.00 - 8.00 PSF
Lot Size	1.68 +/- & 1.15 +/- Acres

DEMOGRAPHICS

Stats	Population	Avg. HH Income
1 Mile	3,035	\$72,216
3 Miles	17,700	\$59,477
5 Miles	39,537	\$50,292

For more information

Jake Redfearn

O: 575 521 1535 | C: 575 635 5895
jake@1stvalley.com

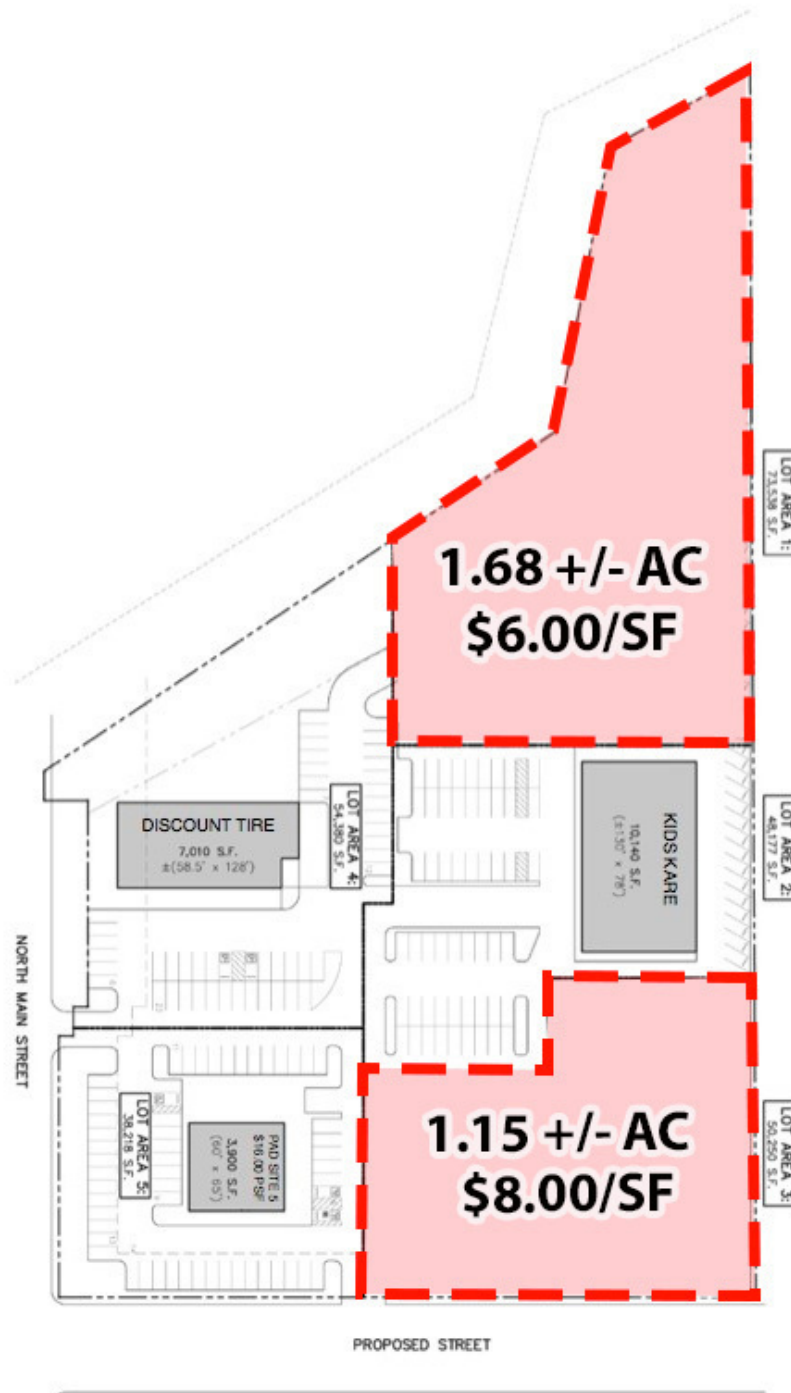
Jacob Slavec, SIOR

O: 575 521 1535 | C: 575 644 8529
jacob@1stvalley.com

For Sale

Plat Map

1.15 +/- AC & 1.68 +/- AC



Surrounding Businesses

