

FOR SALE

PROFESSIONAL COMMERCIAL BUILDING

MODERN OFFICE SPACE WITH TEN PRIVATE OFFICES

1121 SAN MATEO BOULEVARD NE | ALBUQUERQUE, NM 87110

SWC SAN MATEO BLVD & MARBLE AVE.



OFFERED AT
\$775,000

AVAILABLE

- Building: $\pm 4,130$ SQFT
- Parking: -33 Front Lot Spaces
-2 Handicap Spaces

PROPERTY DESCRIPTION

SELLER IS OPEN TO OWNER FINANCE AND LEASE-TO-PURCHASE

Excellent location with modern updates throughout. Building was used for an engineering firm and has 10 private offices and many open workspaces, full kitchen, and 2 sets of restrooms. A great commercial property in the heart of the city! Contact me today to schedule a viewing!



8200 Carmel Ave NE STE 103-A, Albuquerque, NM 87122
505.292.8900

NIKKI BRONSTORP
REALTOR® | Qualifying Broker
nikki.coldwellbl@gmail.com
c: (505) 209-1246



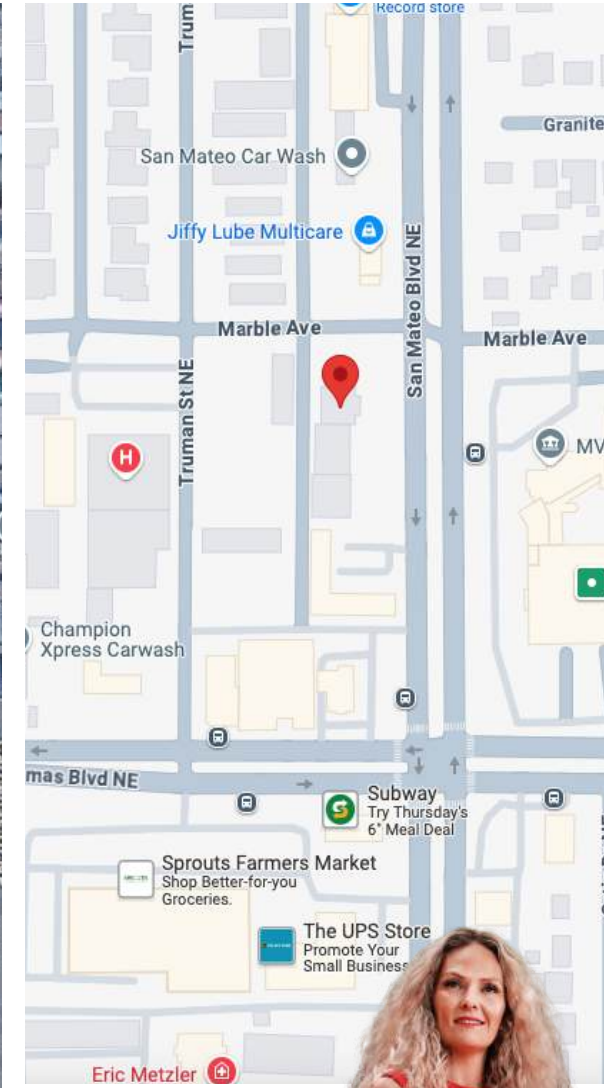
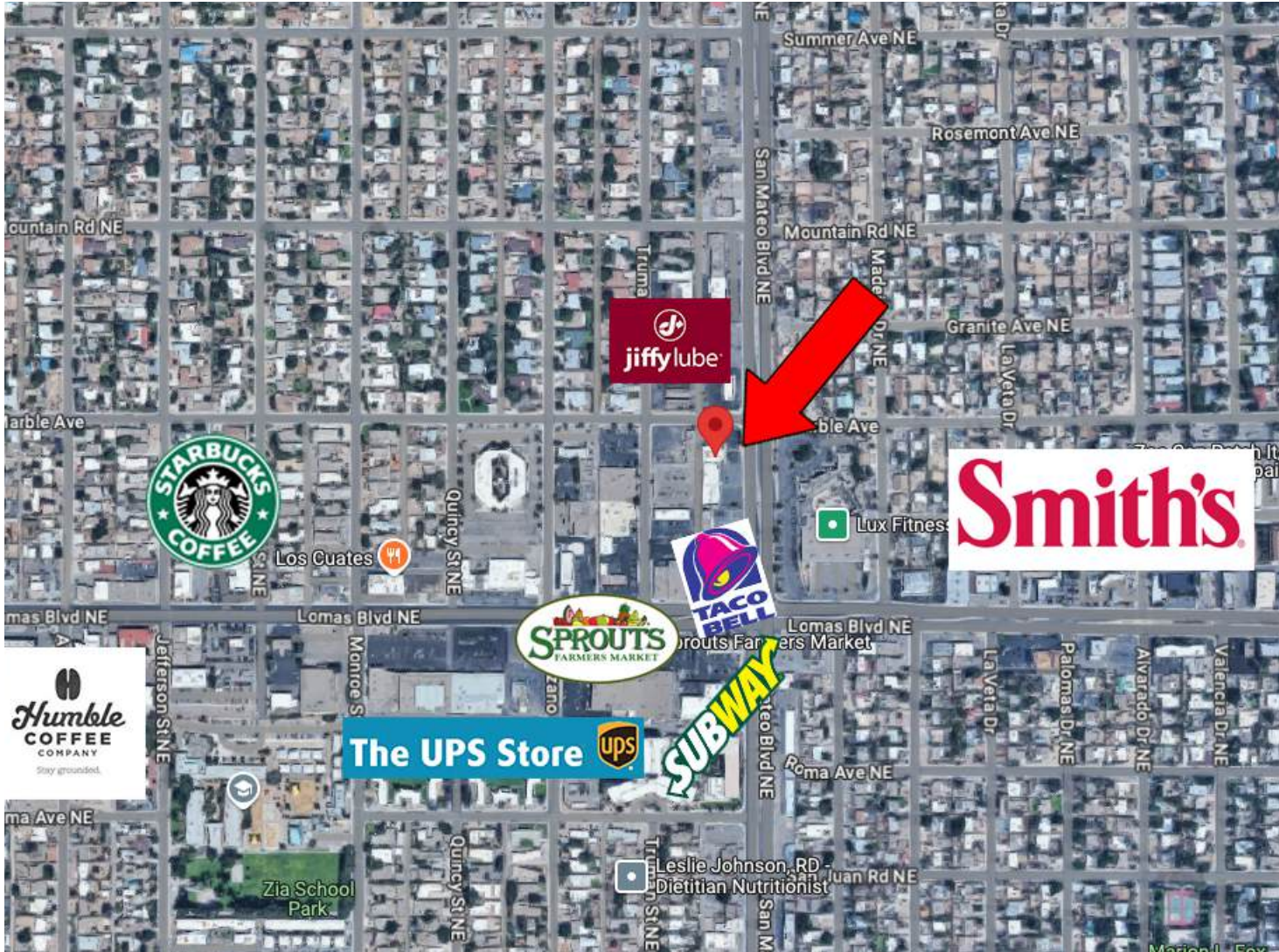
FOR SALE

PROFESSIONAL COMMERCIAL BUILDING

MODERN OFFICE SPACE WITH TEN PRIVATE OFFICES

1121 SAN MATEO BOULEVARD NE | ALBUQUERQUE, NM 87110

LOCATION



COLDWELL BANKER | LEGACY

8200 Carmel Ave NE STE 103-A, Albuquerque, NM 87122
505.292.8900

NIKKI BRONSTORP
REALTOR® | Qualifying Broker
nikki.coldwellbl@gmail.com
c: (505) 209-1246



FOR SALE

PROFESSIONAL COMMERCIAL BUILDING

MODERN OFFICE SPACE WITH TEN PRIVATE OFFICES

1121 SAN MATEO BOULEVARD NE | ALBUQUERQUE, NM 87110

LOCATION



COLDWELL BANKER | LEGACY

8200 Carmel Ave NE STE 103-A, Albuquerque, NM 87122
505.292.8900

NIKKI BRONSTORP
REALTOR® | Qualifying Broker
nikki.coldwellbl@gmail.com
c: (505) 209-1246



FOR SALE

PROFESSIONAL COMMERCIAL BUILDING

MODERN OFFICE SPACE WITH TEN PRIVATE OFFICES

1121 SAN MATEO BOULEVARD NE | ALBUQUERQUE, NM 87110

PHOTOS



 COLDWELL BANKER | LEGACY

8200 Carmel Ave NE STE 103-A, Albuquerque, NM 87122
505.292.8900

NIKKI BRONSTORP
REALTOR® | Qualifying Broker
nikki.coldwellbl@gmail.com
c: (505) 209-1246



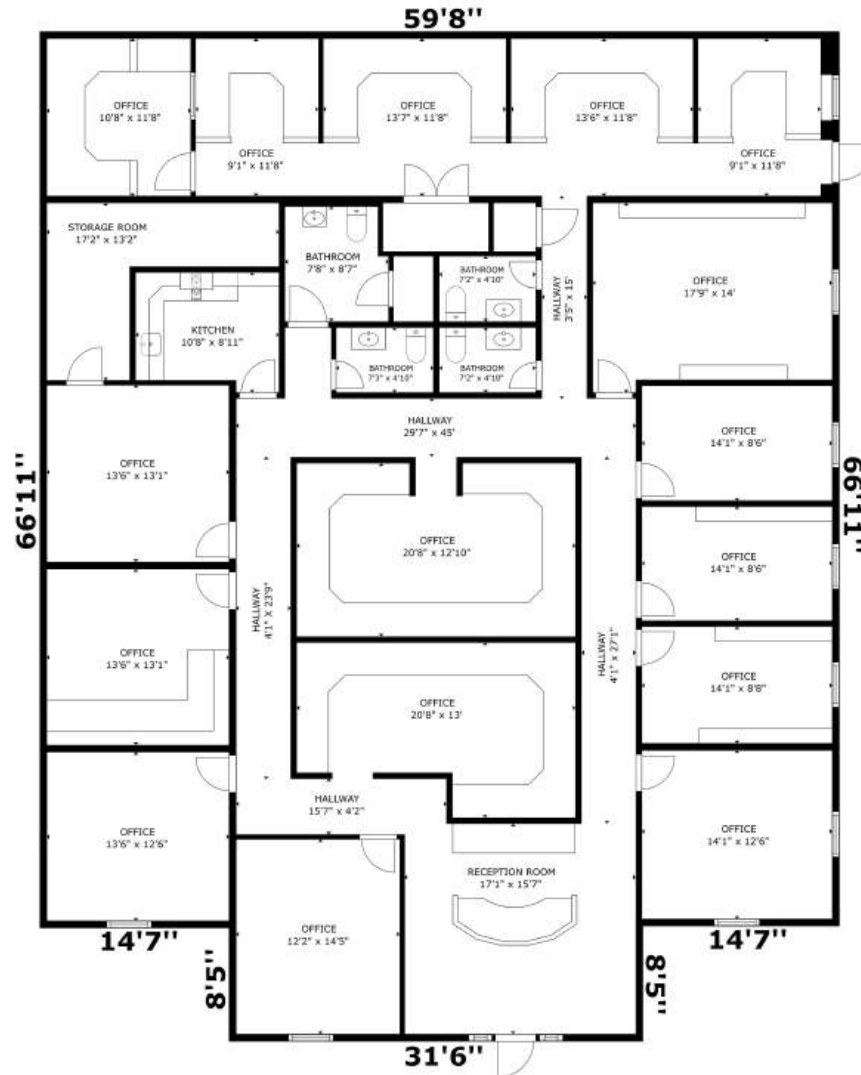
FOR SALE

PROFESSIONAL COMMERCIAL BUILDING

MODERN OFFICE SPACE WITH TEN PRIVATE OFFICES

1121 SAN MATEO BOULEVARD NE | ALBUQUERQUE, NM 87110

FLOOR PLAN



1121 San Mateo Blvd NE, Albuquerque, NM, 87110

FLOOR 1: 4130 sq. ft.
TOTAL LIVEABLE AREA (BASED ON EXTERIOR DIMENSIONS): 4130 sq. ft



COLDWELL BANKER | LEGACY

8200 Carmel Ave NE STE 103-A, Albuquerque, NM 87122
505.292.8900

NIKKI BRONSTORP
REALTOR® | Qualifying Broker
nikki.coldwellbl@gmail.com
c: (505) 209-1246

