

1728 Camino Carlos Rey Suite C • Santa Fe, NM 87505



FOR LEASE

JENNIFER DYESS

Associate Broker
(505) 539-3200
jennifer@reanm.com
53964, New Mexico

TAI BIXBY, CCIM, SIOR

Associate Broker
(505) 539-3205
tai@tba.team
40315, New Mexico



PROPERTY DESCRIPTION

Brand-new industrial modern construction in Santa Fe's evolving Siler Rufina District, a dynamic creative and light-industrial corridor just off Cerrillos Road.

Designed for professionals, artists, designers, architects, and creative retailers.

Whether launching a new studio, opening a gallery, or growing a design-forward business, this space is crafted to elevate your work.

C-2 zoning supports a wide range of uses including retail, gallery, office, and live/work. The property is gated and fully secured.

Features Include:

- Gallery-style interiors with high ceilings and abundant natural light
- Flexible live/work layouts ideal for studios, showrooms, offices, or creative workspaces
- Retail-ready storefronts adjacent to The Consignment Warehouse, a 5,000-square-foot art and furniture consignment gallery with a loyal following
- Full kitchen and two full bathrooms
- Ample parking with EV charging available
- Easy access for clients, visitors, and deliveries

SUMMARY

Available SF: 1,500

Building SF: 3,000

Lease Rate: \$3,400/month
+ Utilities

Lease Term: 2 Years

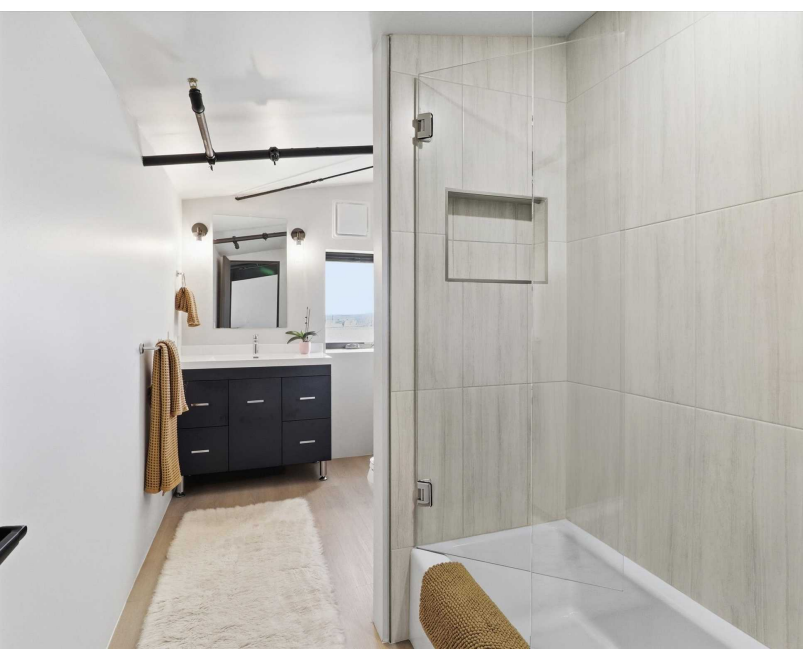
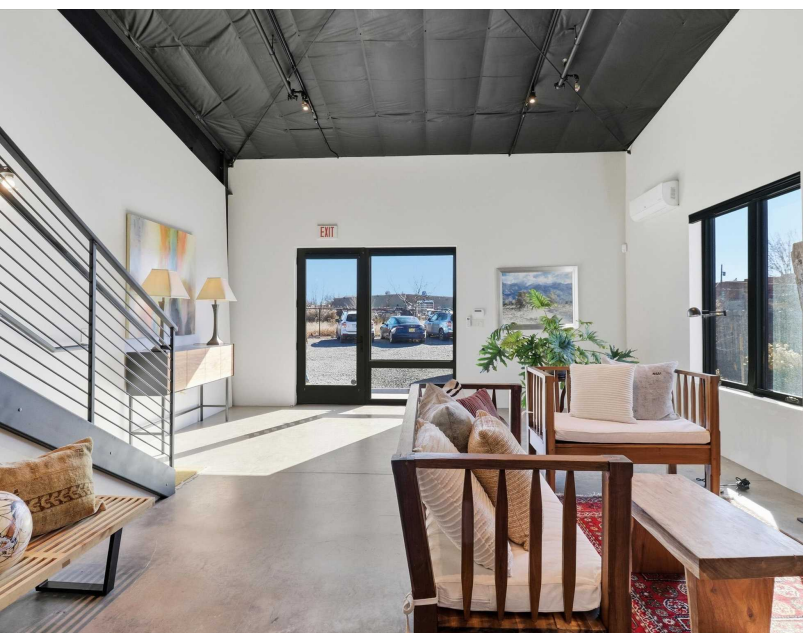
Lot Size: 0.68 SF

Year Built: 2025

Zoning: C2

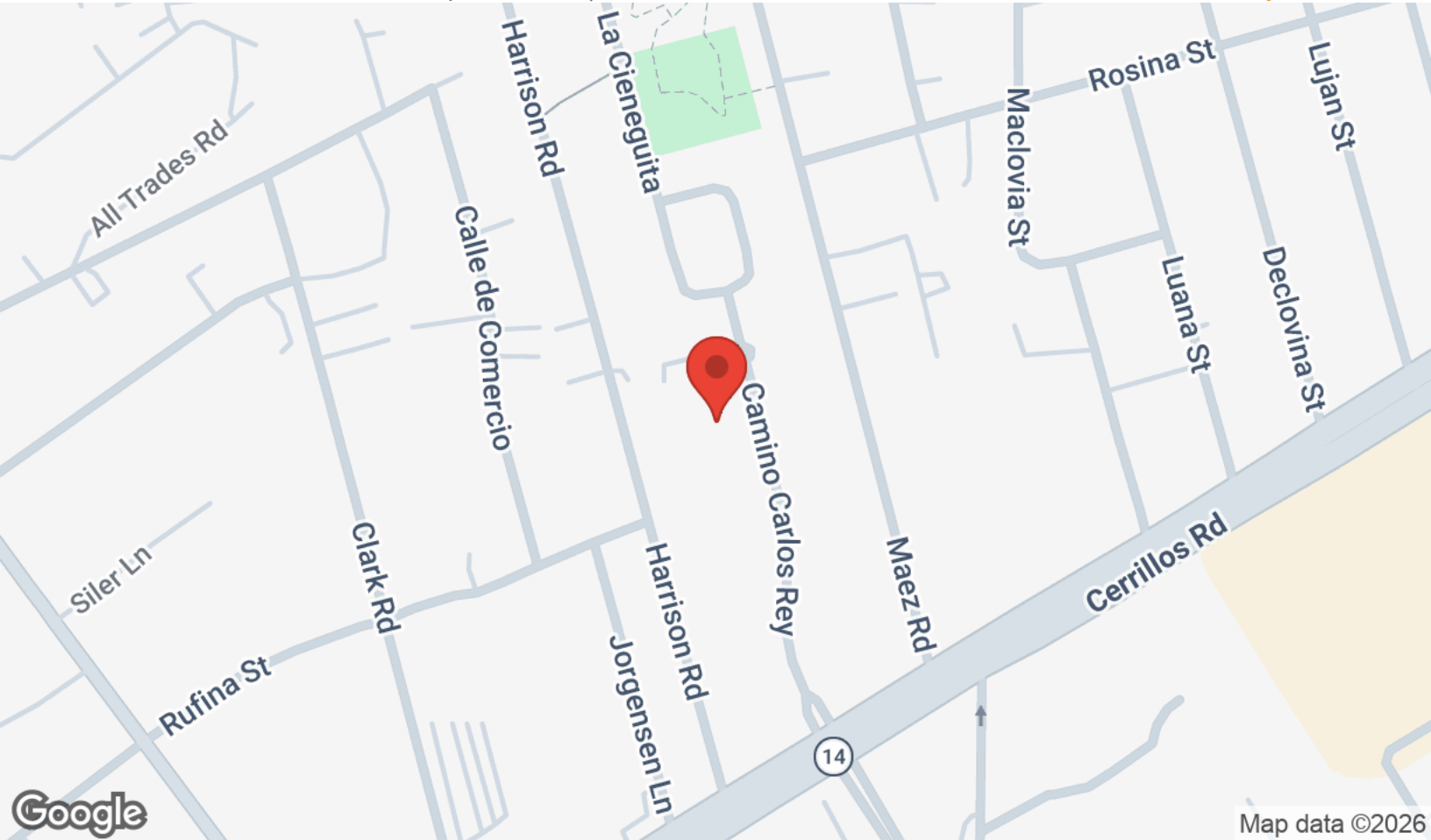
PROPERTY PHOTOS

1728 CAMINO CARLOS REY | SANTA FE, NM 87505



LOCATION MAPS

1728 CAMINO CARLOS REY | SANTA FE, NM 87505



DISCLAIMER

1728 CAMINO CARLOS REY



All materials and information received or derived from REA | Real Estate Advisors its directors, officers, agents, advisors, affiliates and/or any third party sources are provided without representation or warranty as to completeness, veracity, or accuracy, condition of the property, compliance or lack of compliance with applicable governmental requirements, developability or suitability, financial performance of the property, projected financial performance of the property for any party's intended use or any and all other matters.

Neither REA | Real Estate Advisors its directors, officers, agents, advisors, or affiliates makes any representation or warranty, express or implied, as to accuracy or completeness of the materials or information provided, derived, or received. Materials and information from any source, whether written or verbal, that may be furnished for review are not a substitute for a party's active conduct of its own due diligence to determine these and other matters of significance to such party. REA | Real Estate Advisors will not investigate or verify any such matters or conduct due diligence for a party unless otherwise agreed in writing.

EACH PARTY SHALL CONDUCT ITS OWN INDEPENDENT INVESTIGATION AND DUE DILIGENCE.

Any party contemplating or under contract or in escrow for a transaction is urged to verify all information and to conduct their own inspections and investigations including through appropriate third-party independent professionals selected by such party. All financial data should be verified by the party including by obtaining and reading applicable documents and reports and consulting appropriate independent professionals. REA | Real Estate Advisors makes no warranties and/or representations regarding the veracity, completeness, or relevance of any financial data or assumptions. REA | Real Estate Advisors does not serve as a financial advisor to any party regarding any proposed transaction.

All data and assumptions regarding financial performance, including that used for financial modeling purposes, may differ from actual data or performance. Any estimates of market rents and/or projected rents that may be provided to a party do not necessarily mean that rents can be established at or increased to that level. Parties must evaluate any applicable contractual and governmental limitations as well as market conditions, vacancy factors and other issues in order to determine rents from or for the property. Legal questions should be discussed by the party with an attorney. Tax questions should be discussed by the party with a certified public accountant or tax attorney. Title questions should be discussed by the party with a title officer or attorney. Questions regarding the condition of the property and whether the property complies with applicable governmental requirements should be discussed by the party with appropriate engineers, architects, contractors, other consultants, and governmental agencies. All properties and services are marketed by REA | Real Estate Advisors in compliance with all applicable fair housing and equal opportunity laws.

REA | REAL ESTATE ADVISORS

101d Sun Ave NE Suite 2A
Albuquerque, NM 87109

PRESENTED BY:

JENNIFER DYESS

Associate Broker
O: (505) 539-3200
C: (505) 303-0132
jennifer@reanm.com
53964, New Mexico

TAI BIXBY, CCIM, SIOR

Associate Broker
O: (505) 539-3205
C: (505) 577-3524
tai@tba.team
40315, New Mexico

We obtained the information above from sources we believe to be reliable. However, we have not verified its accuracy and make no guarantee, warranty or representation about it. It is submitted subject to the possibility of errors, omissions, change of price, rental or other conditions, prior sale, lease or financing, or withdrawal without notice. We include projections, opinions, assumptions or estimates for example only, and they may not represent current or future performance of the property. You and your tax and legal advisors should conduct your own investigation of the property