

EL MERCADO PLAZA

FOR LEASE

Retail Space Available

AVAILABLE

- Unit 527-B: $\pm 1,190$ SF
- Unit 511: $\pm 30,100$ SF

LEASE RATE

See Advisors

ZONING

SC-2 | Planned Shopping Center

HIGHLIGHTS

- Establish shopping center
- Ample customer parking
- Excellent visibility and co-tenancy
- Easy access via Cordova Rd., Don Diego Ave. & Camino de los Marquez
- Nearby retailers include:
 - Trader Joe's
 - O'Reilly Auto Parts
 - Orange Theory
 - Dollar Tree
 - Sports Shops
 - Restaurants/Bakeries
 - State Departments and private offices

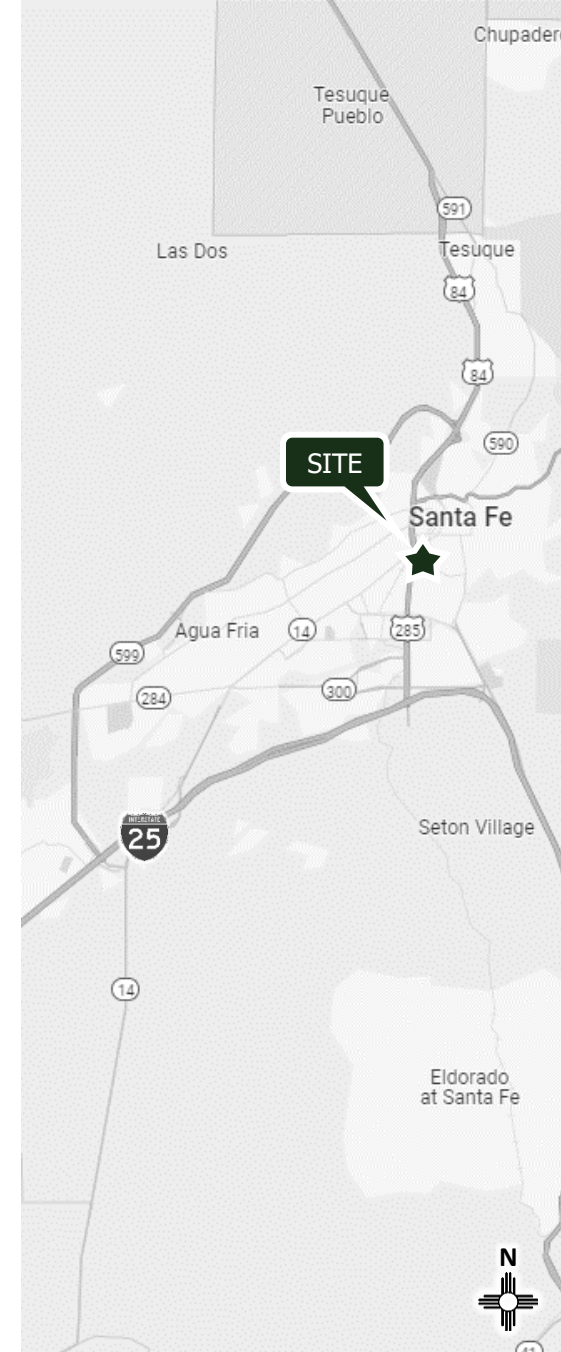
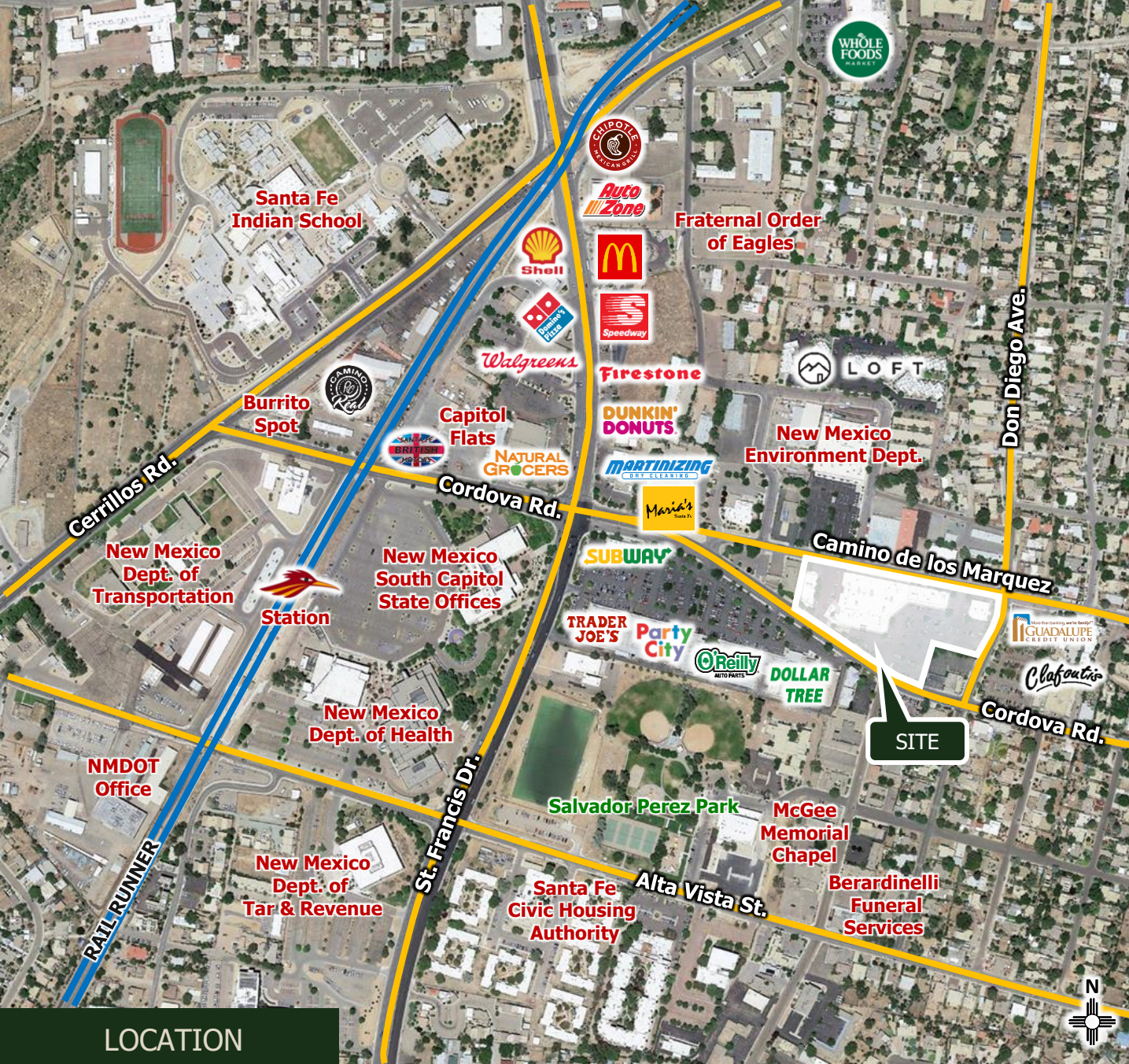


511 Cordova Rd. Santa Fe, NM 87505



505.473.3434 | www.garsagroup.com
418 Cerrillos Rd. | Suite 11 | Santa Fe, NM 87501

Joel Cumplido	Jonathon Rivera
505.670.3328	505.913.0957
joel@garsagroup.com	jonathon@garsagroup.com



LOCATION

FOR LEASE

Retail Space Available
511 Cordova Rd. Santa Fe, NM 87505

Joel Cumplido
505.670.3328
joel@garsagroup.com

Jonathon Rivera
505.913.0957
jonathon@garsagroup.com



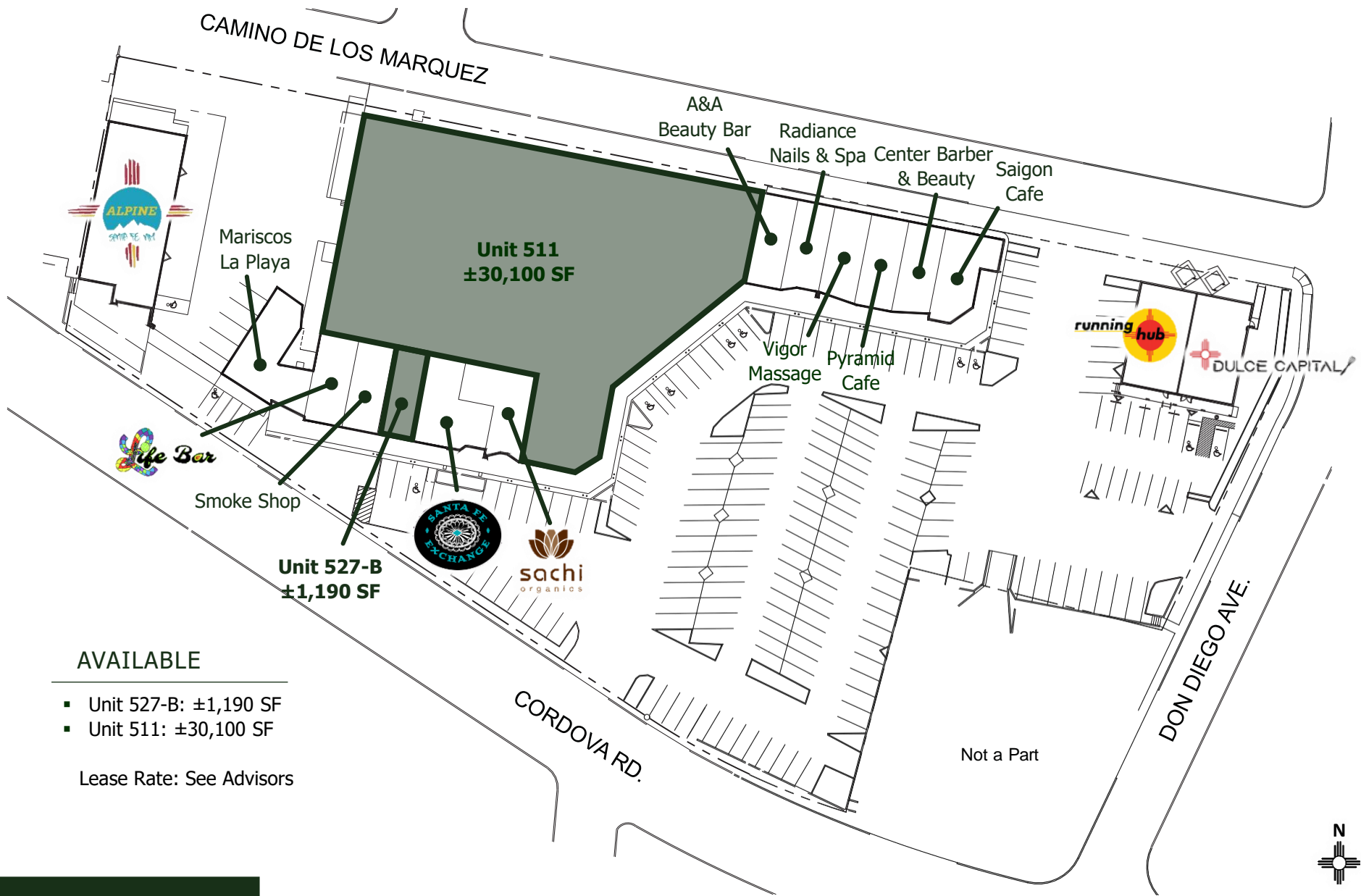
LOCATION

FOR LEASE

Retail Space Available
511 Cordova Rd. Santa Fe, NM 87505

Joel Cumplido
505.670.3328
joel@garsagroup.com

Jonathon Rivera
505.913.0957
jonathon@garsagroup.com



SITE PLAN

FOR LEASE

Retail Space Available
 511 Cordova Rd. Santa Fe, NM 87505

Joel Cumplido
 505.670.3328
 joel@garsagroup.com

Jonathon Rivera
 505.913.0957
 jonathon@garsagroup.com



PHOTOS

FOR LEASE

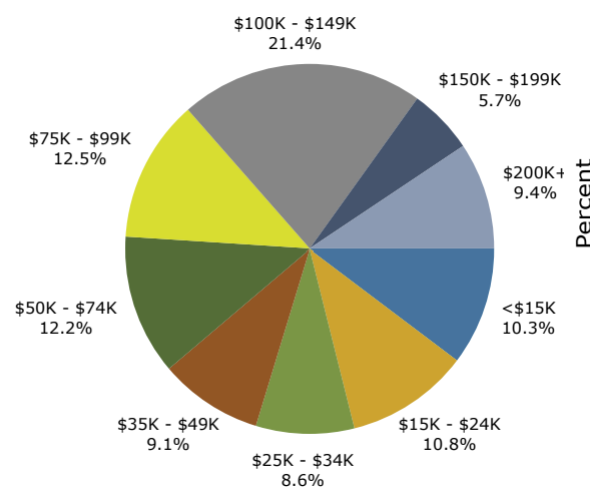
Retail Space Available
511 Cordova Rd. Santa Fe, NM 87505

Joel Cumplido
505.670.3328
joel@garsagroup.com

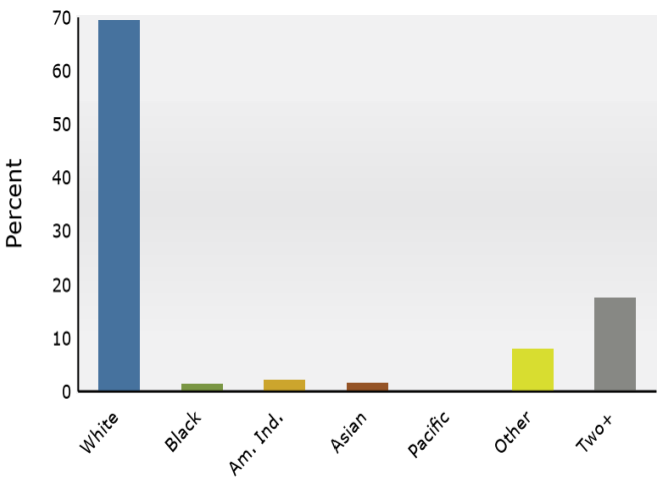
Jonathon Rivera
505.913.0957
jonathon@garsagroup.com

2024 Forecasted by ESRI	1 Mile	3 Mile	5 Mile
Population	10,167	48,439	76,377
Households	5,731	25,127	37,492
Families	2,020	11,070	18,004
Average Households Size	1.72	1.90	2.00
Median Age	54.7	54.0	51.7
Media HH Income	\$72,235	\$79,046	\$78,764
Average HH Income	\$99,079	\$112,636	\$113,519
Total Business	1,859	5,387	6,315
Total Employees	25,359	63,693	74,116

HH Income – 1 mile radius



Population by Race – 1 mile radius



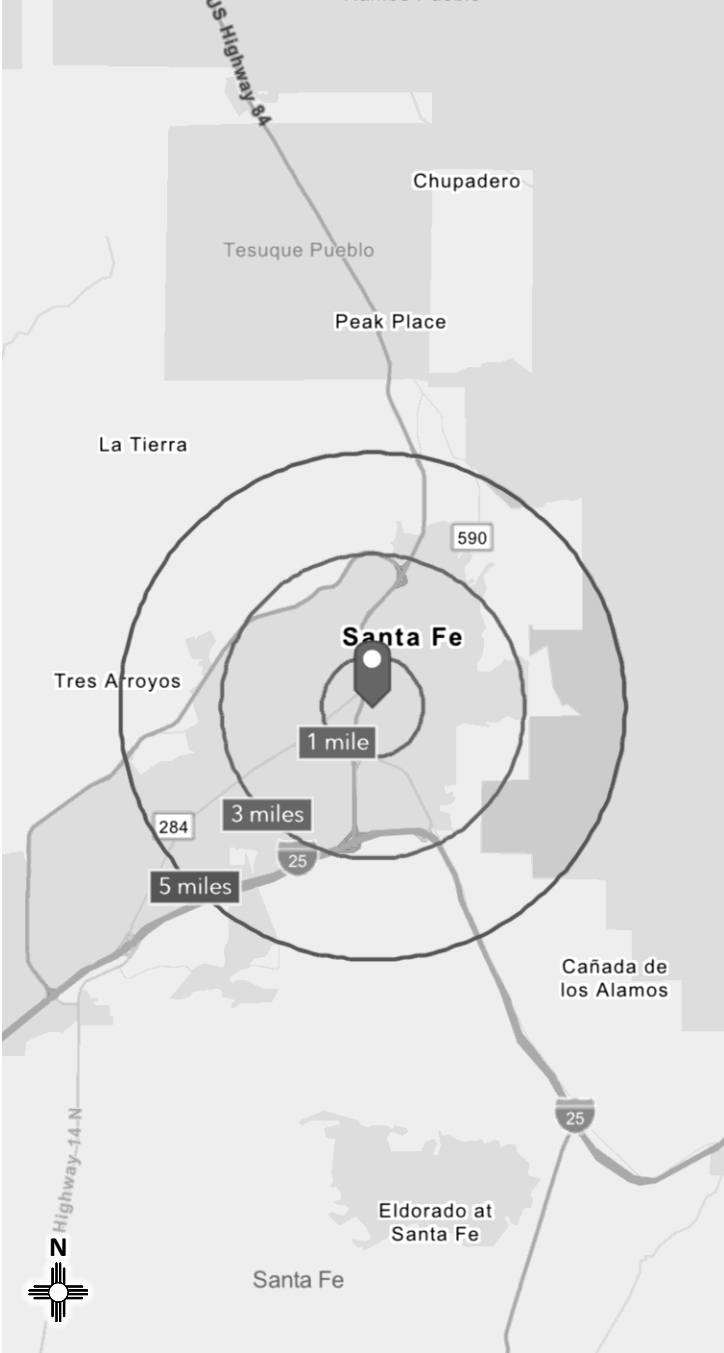
2024 Percent Hispanic Origin:32.4%

The information contained in this flyer is believed reliable. While we do not doubt the accuracy, we have not verified it and make no guarantee, warranty or representation about it. It is your responsibility to independently confirm its accuracy and completeness. Any projection, opinion, assumption or estimated uses are for example only and do not represent the current or future performance of the property. The value of this transaction to you depends on many factors which should be evaluated by your tax, financial, and legal counsel. You and your counsel should conduct a careful independent investigation of the property to determine that it is suitable to your needs.

DEMOGRAPHICS

FOR LEASE

Retail Space Available
511 Cordova Rd. Santa Fe, NM 87505



Joel Cumplido
505.670.3328
joel@garsagroup.com

Jonathon Rivera
505.913.0957
jonathon@garsagroup.com