

# For Sale

## Land Opportunity Santa Rosa, NM 88435

### Land Ready for Development

- Prime Location: Situated near Interstate 40, a major east-west freight corridor in the US
- Future Development Potential
- Land: 31.68 Acres

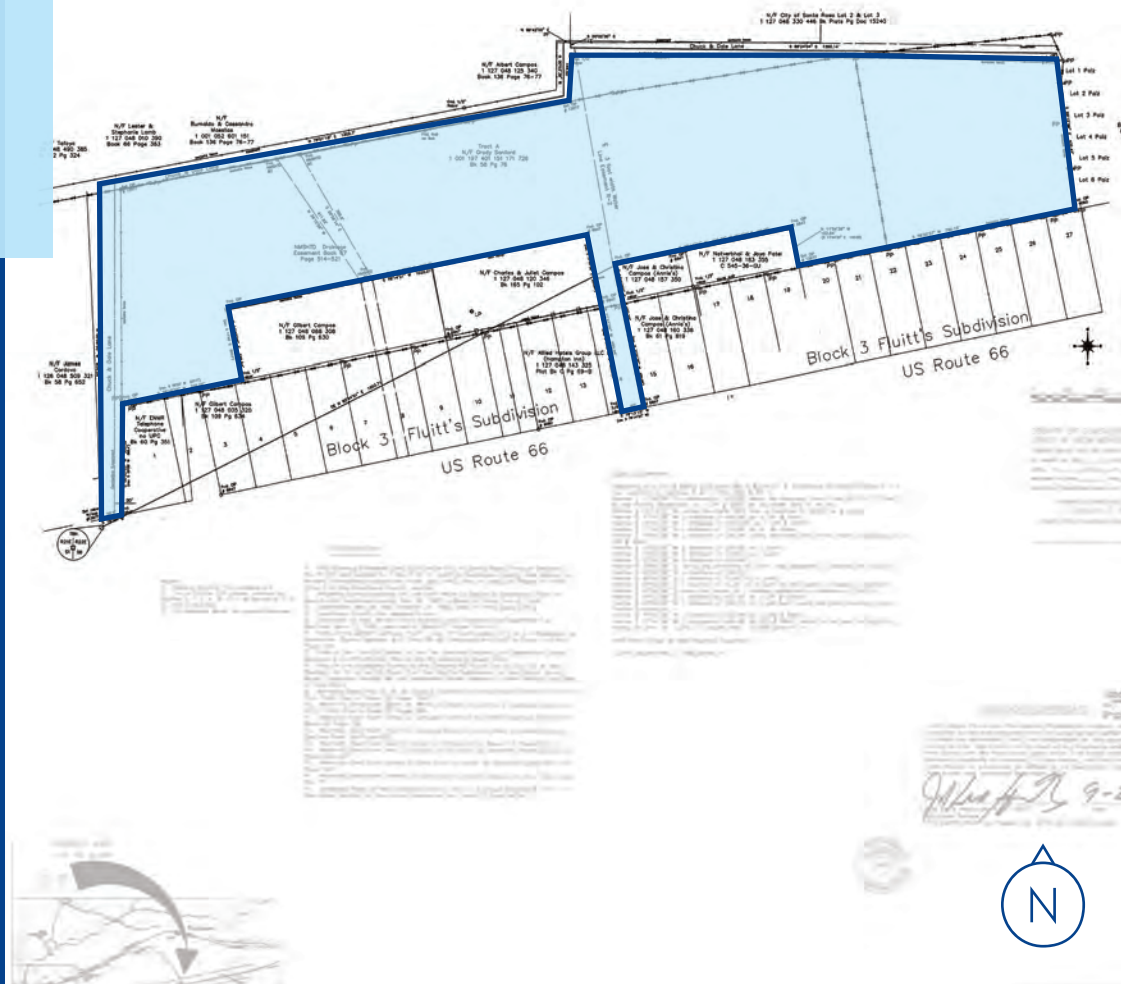


Colliers | New Mexico-El Paso  
5051 Journal Center Blvd. NE, Suite 200  
Albuquerque, NM 87109  
Main: +1 505 883 7676  
colliers.com

**Tom Franchini, CCIM**  
Vice President  
+1 505 880 7097  
tom.franchini@colliers.com  
Lic. No. 40532

**Bill Robertson**  
President | Principal  
& Qualifying Broker  
+1 505 880 7050  
bill.robertson@colliers.com  
Lic. No. 8433

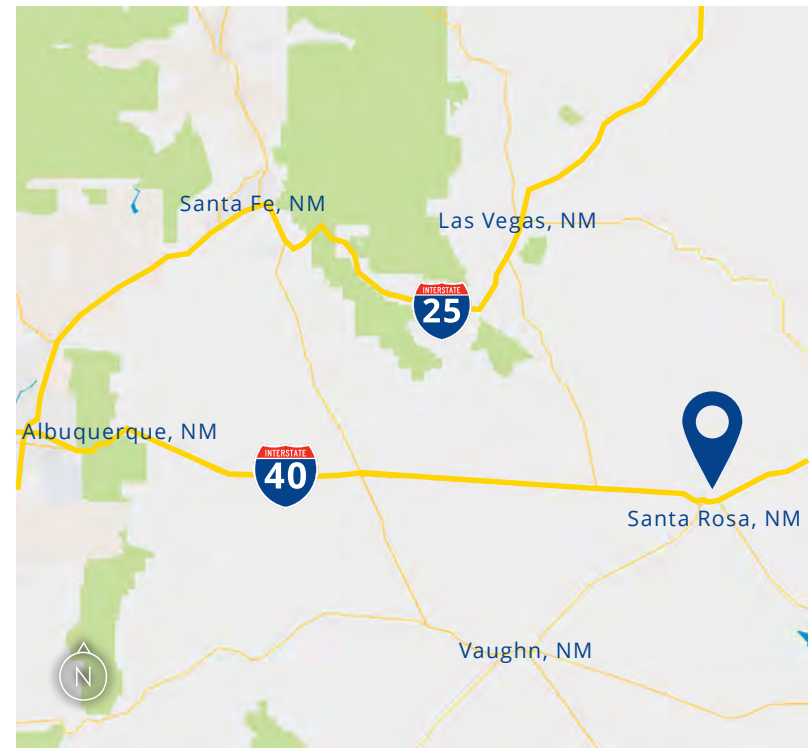
**Lori Robertson**  
Associate Broker  
+1 505 880 7044  
lori.robertson@colliers.com  
Lic. No. 32667



# Property Profile

## Details

Sale Price	\$98,000 (\$3,100/AC)
Current Use	Vacant Land
Lot Size	31.68 Acres
Submarket	Santa Rosa, NM
County	Guadalupe County



## Features

- Located between Exit 275 and Exit 277 off Interstate 40
- Just north of Route 66 with access onto Route 66 and additional access behind
- Freeway access via Route 66 and US-84
- Limited to agricultural uses, low-density residential, and related land uses
- TA truck stop, restaurants, hotel/motels and other retail developments nearby
- Flat and accessible terrain, which can support a variety (or specific) of development opportunities

Sale Price \$98,000



# Intersection Aerial



# Intersection Aerial

Lot Size: 31.68 Acres

Listing Price: \$98,000

