

6020 MIDWAY PK - SECURED YARD

NEQ MIDWAY PARK BLVD NE & MIDWAY PL NE
6020 MIDWAY PARK BLVD NE, ALBUQUERQUE, NM 87109



FOR LEASE

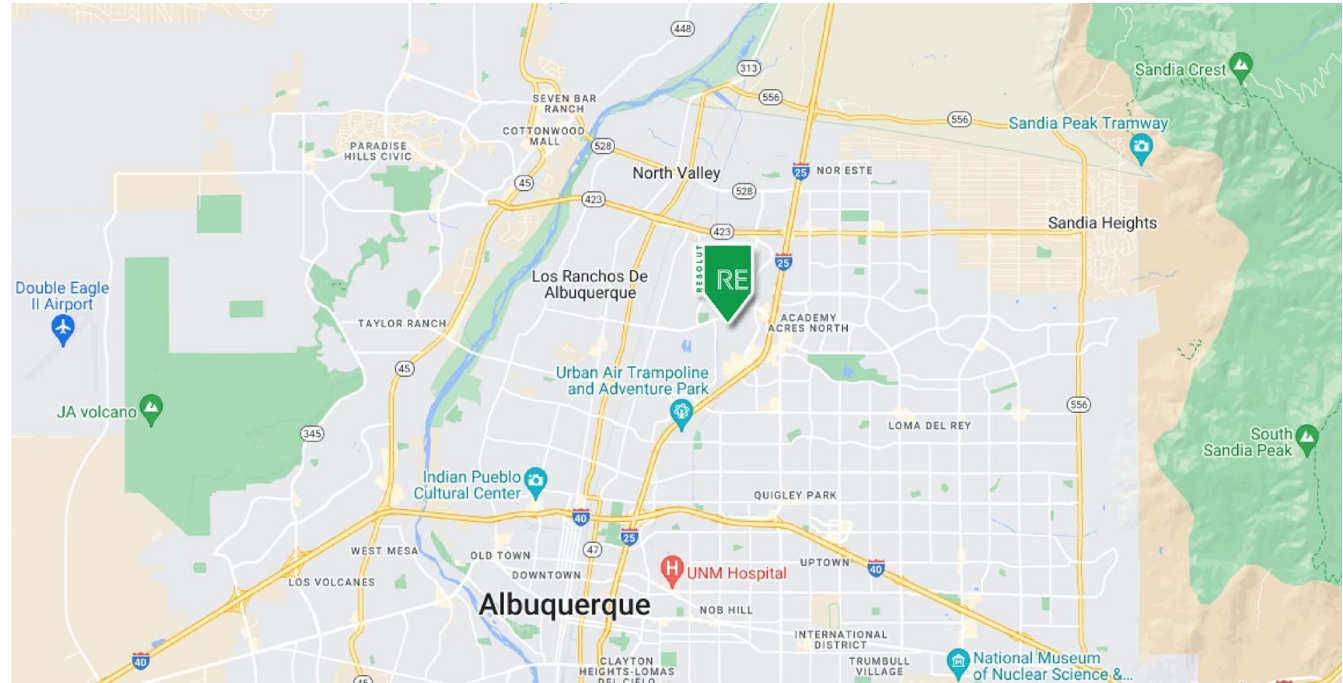
AVAILABLE LAND
0.29 AC

RATE
\$1,400/mo
NR-BP Zoning

Martin Richardson
mrichardson@resolutre.com
505.337.0777

PROPERTY HIGHLIGHTS

- North I-25 Location
- Calm Neighborhood/Submarket
- Fully fenced and gated yard
- 0.29 Acres
- Outdoor storage only
(connex/sheds ok)
- CMU Block Construction



AREA TRAFFIC GENERATORS



Martin Richardson

mrichardson@resolutre.com | 505.337.0777

DEMOGRAPHIC SNAPSHOT 2025



81,366
POPULATION
3-MILE RADIUS



\$88,681.00
AVG HH INCOME
3-MILE RADIUS



124,162
DAYTIME POPULATION
3-MILE RADIUS



TRAFFIC COUNTS
Chappell Dr NE: 8,399 VPD
Osuna: 24,282 VPD
(STDB 2025)

6020 MIDWAY PK - OFFICE/WAREHOUSE | 6020 Midway Park Blvd NE, Albuquerque, NM 87109**PROPERTY OVERVIEW**

6020 Midway Pk is a 12,000 SF Office Warehouse complex centrally located in the North I-25 Corridor. The property sits on NR-BP zoned land with flexible regulations on use. This property is newly constructed post 2,000 with CMU brick, and is well maintained. The current vacancy is a 2,982 SF with roughly 60% office and 40% warehouse, the space could easily be flexed to a 50/50 distribution.

LOCATION OVERVIEW

The North I-25 corridor is the most coveted corridor for industrial and office/warehouse users in Albuquerque. This property is located within a secluded business park area and is relatively quiet. The property is less than 5 minutes from the I-25 & Jefferson interchange allowing for easy access to the entire Albuquerque MSA.

PROPERTY OVERVIEW

Available:	0.29 AC
Zoning:	NR-BP
Submarket:	North I-25
Year Built:	2000

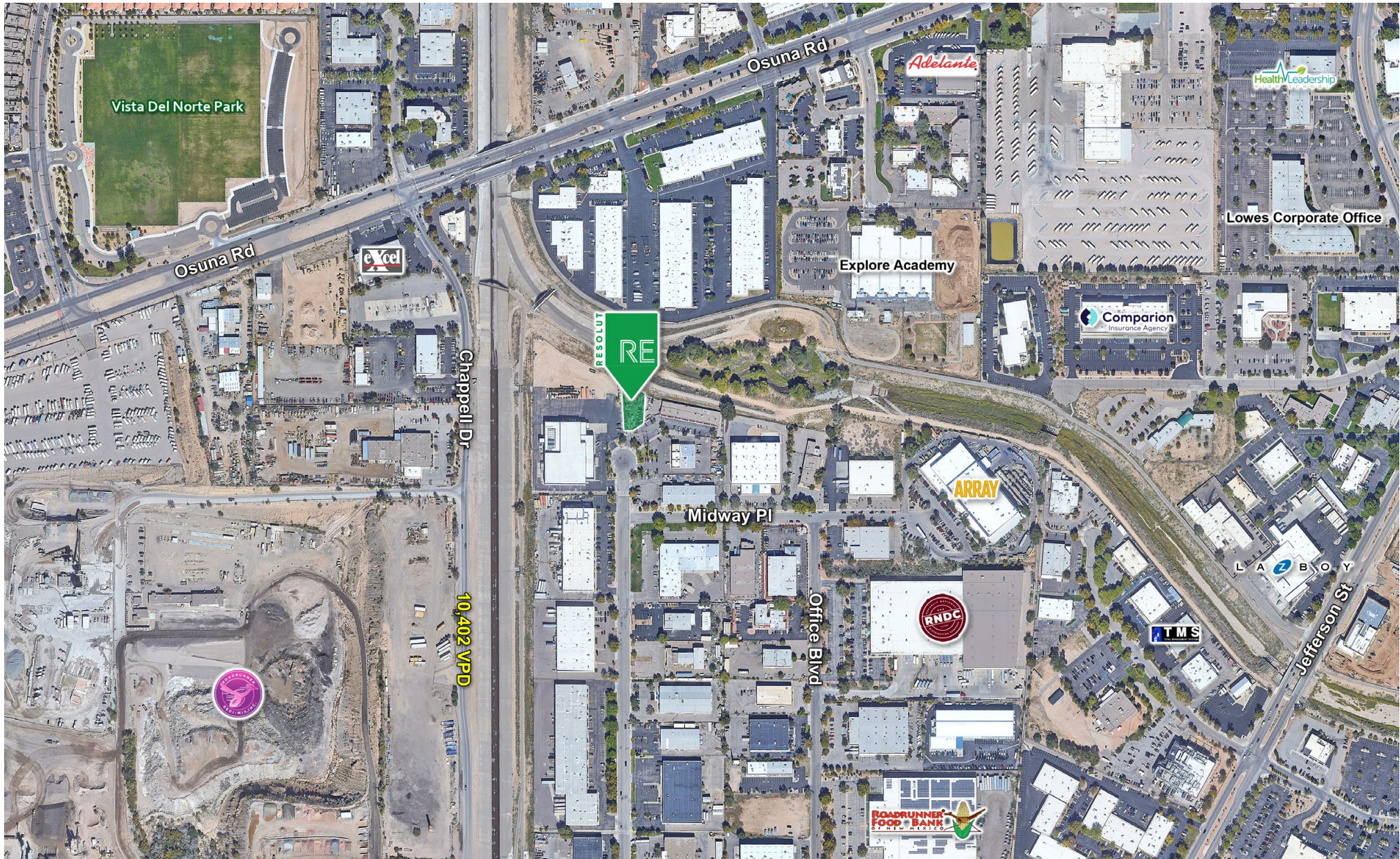


6020 MIDWAY PK - OFFICE/WAREHOUSE | 6020 Midway Park Blvd NE, Albuquerque, NM 87109

6020 MIDWAY PK - OFFICE/WAREHOUSE | 6020 Midway Park Blvd NE, Albuquerque, NM 87109

Layers

6020 MIDWAY PK - OFFICE/WAREHOUSE | 6020 Midway Park Blvd NE, Albuquerque, NM 87109



6020 MIDWAY PK - OFFICE/WAREHOUSE | 6020 Midway Park Blvd NE, Albuquerque, NM 87109

