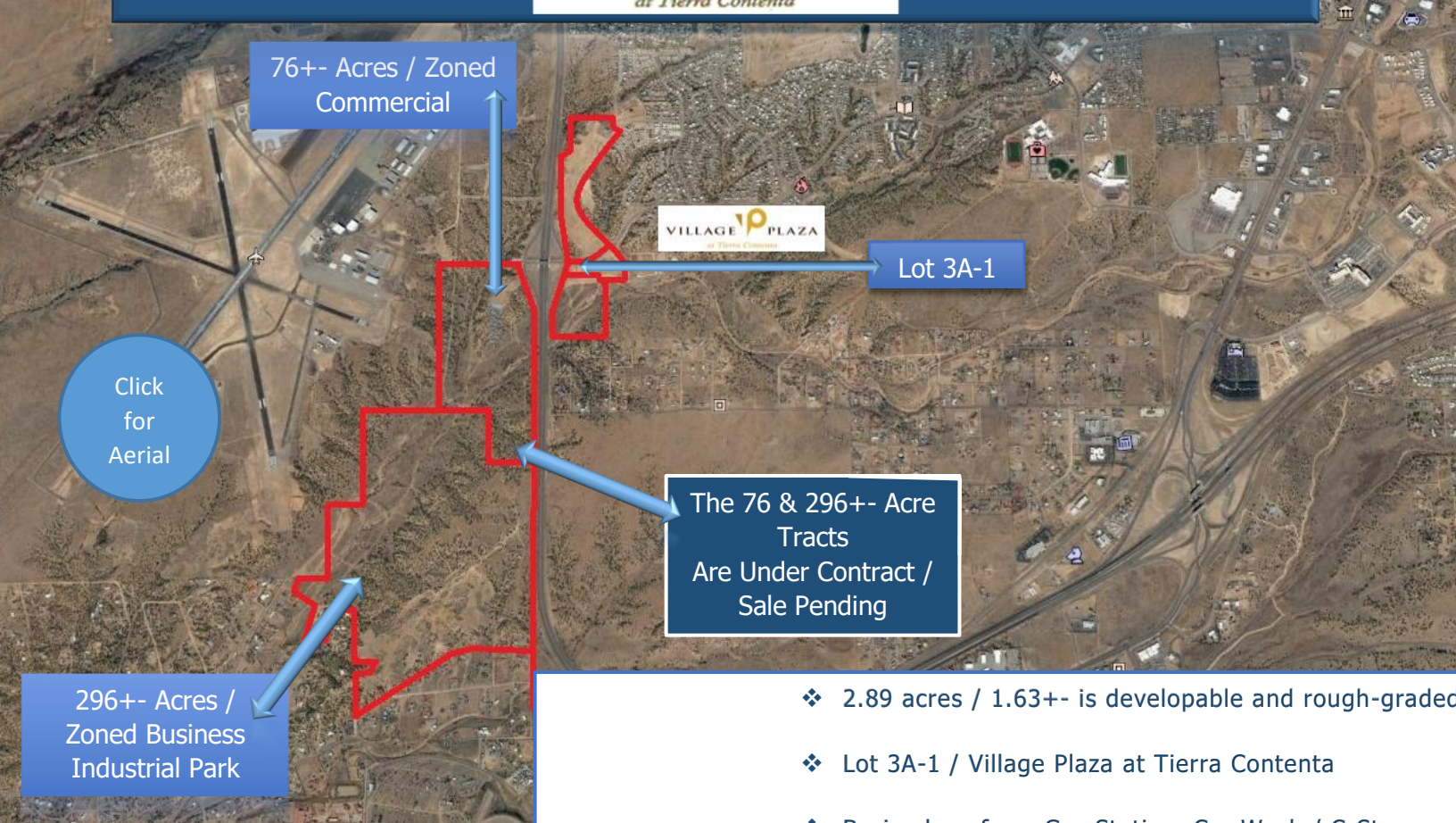


Commercial pad site at HWY-599 at the Jaguar overpass (3A-1)
in Santa Fe, New Mexico



- ❖ 2.89 acres / 1.63+- is developable and rough-graded
- ❖ Lot 3A-1 / Village Plaza at Tierra Contenta
- ❖ Basic plans for a Gas Station, Car Wash / C-Store (This is not a required use)

- ❖ Borders Hwy-599 at the new Jaguar overpass
- ❖ 599 is a main access into Santa Fe from I-25 and a direct route to Northern NM
- ❖ Convenient access to all areas of Santa Fe

- ❖ Jaguar feeds into the Tierra Contenta Subdivision and connects to Cerrillos Rd
- ❖ Jaguar is planned as the new main entrance to the Santa Fe Municipal Airport

The Brokerage Realty ABQ., LLC
Commercial Real Estate Brokerage

C: 505-480-7524



www.Acre9.com

Jeremy Gonzales-Qualifying Broker

6152 Deergrass Circle NW Albuquerque, New Mexico 87120
Phone: 505-299-6983 Fax: 505-459-0969

SiteSelect@hotmail.com



The Brokerage Realty ABQ., llc
Commercial Real Estate Brokerage

C: 505-480-7524



www.Acre9.com

Jeremy Gonzales-Qualifying Broker

6152 Deergrass Circle NW Albuquerque, New Mexico 87120
Phone: 505-299-6983 Fax: 505-459-0969
SiteSelect@hotmail.com



THE INFORMATION CONTAINED HEREIN HAS BEEN OBTAINED FROM SOURCES DEEMED RELIABLE, THOUGH WE DO NOT DOUBT THE ACCURACY OF THE INFORMATION, IT IS NOT GUARANTEED. THIS INFORMATION IS SUBMITTED SUBJECT TO ERRORS, OMISSIONS, CHANGE(S) IN PRICE, TERMS, CONDITIONS, PRIOR SALES, OR WITHDRAWAL FROM THE MARKET WITHOUT NOTICE. BROKERS MAKE NO GUARANTEE OR WARRANTIES, EITHER EXPRESS OR IMPLIED AS TO THE COMPLETENESS OR ACCURACY OF THE INFORMATION CONTAINED HEREIN. IT IS THE RESPONSIBILITY OF THE READER TO INDEPENDENTLY CONFIRM THE ACCURACY AND COMPLETENESS OF THE INFORMATION CONTAINED HEREIN.

The Brokerage Realty ABQ., LLC
Commercial Real Estate Brokerage

C: 505-480-7524



www.Acre9.com