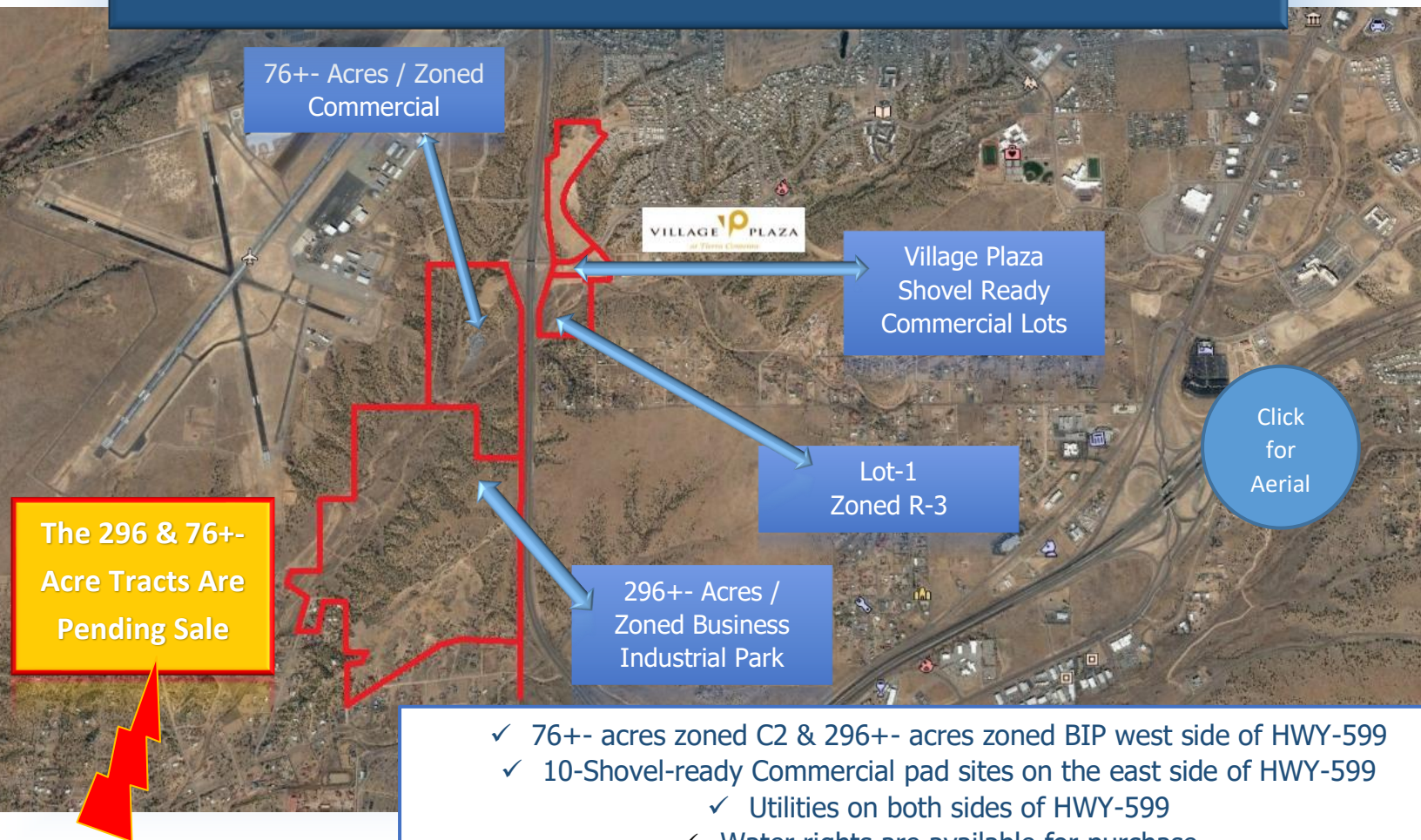


1 to 420+- acres on both side of HWY-599 at the Jaguar overpass
in Santa Fe, New Mexico
Mix of Commercial, Residential, and Business Industrial Park zoning (City)



- ✓ 76+- acres zoned C2 & 296+- acres zoned BIP west side of HWY-599
- ✓ 10-Shovel-ready Commercial pad sites on the east side of HWY-599
 - ✓ Utilities on both sides of HWY-599
 - ✓ Water rights are available for purchase

- ✓ Acreage borders the 599-Bypass at the new Jaguar Drive overpass
- ✓ 599 is a main access into Santa Fe from I-25 and a direct route to Northern NM
- ✓ Convenient access to all areas of Santa Fe

- ✓ Jaguar Dr feeds into the Tierra Contenta Subdivision and connects to Cerrillos Rd
 - ✓ Swan Park is on the Village Plaza side 599
 - ✓ Railrunner Station at 599 & I-25 that provides rail access to Albuquerque
- ✓ Jaguar is planned as the new main entrance to the Santa Fe Municipal Airport

The Brokerage Realty ABQ., LLC
Commercial Real Estate Brokerage

C: 505-480-7524



www.Acre9.com

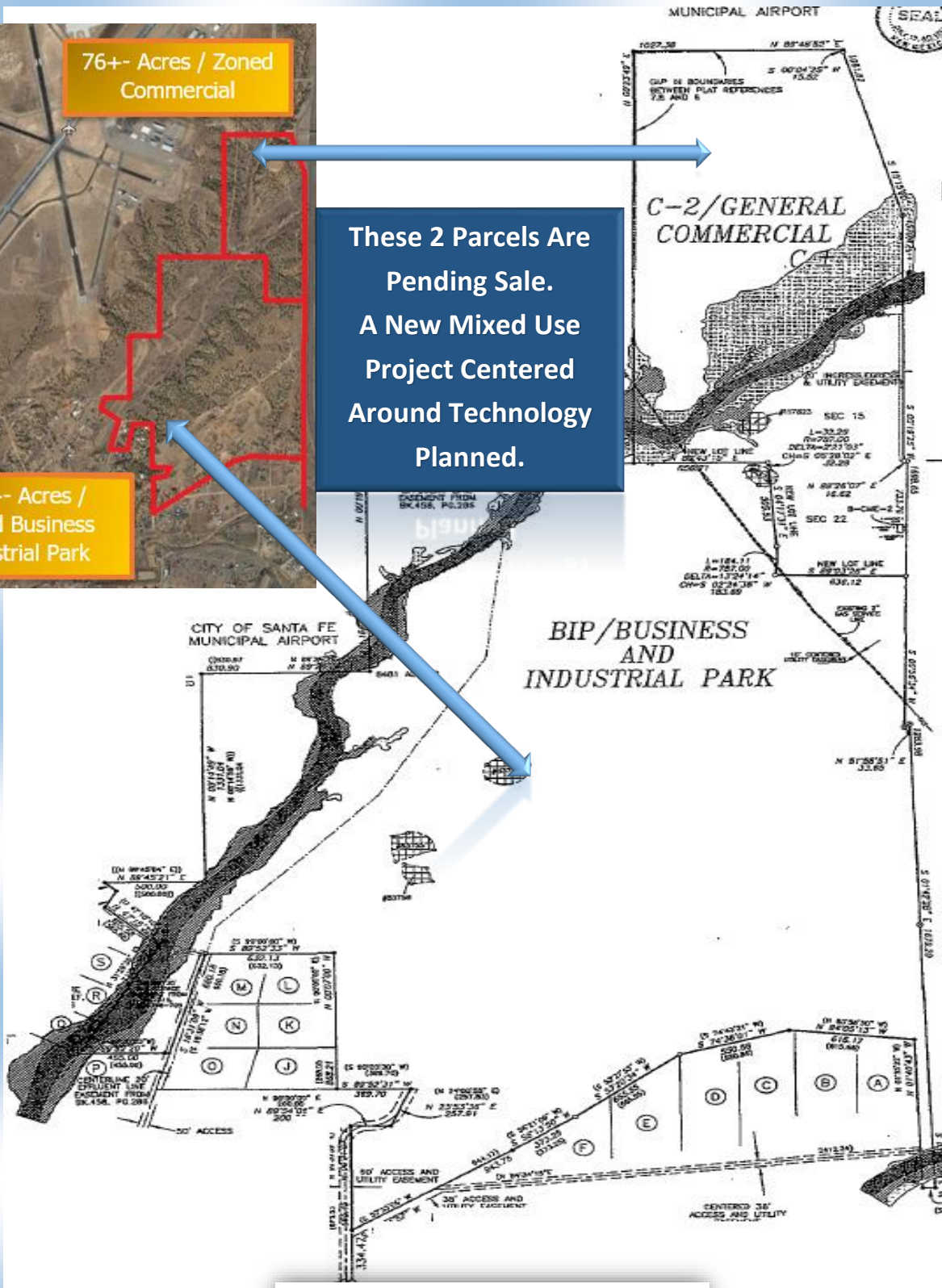
Jeremy Gonzales-Qualifying Broker

6152 Deergass Circle NW Albuquerque, New Mexico 87120
Phone: 505-299-6983 Fax: 505-459-0969

SiteSelect@hotmail.com



These 2 Parcels Are
Pending Sale.
A New Mixed Use
Project Centered
Around Technology
Planned.



The Brokerage Realty ABQ., LLC
Commercial Real Estate Brokerage

C: 505-480-7524



www.Acre9.com

Jeremy Gonzales-Qualifying Broker

6152 Deergrass Circle NW Albuquerque, New Mexico 87120
Phone: 505-299-6983 Fax: 505-459-0969

SiteSelect@hotmail.com



THE INFORMATION CONTAINED HEREIN HAS BEEN OBTAINED FROM SOURCES DEEMED RELIABLE, THOUGH WE DO NOT DOUBT THE ACCURACY OF THE INFORMATION, IT IS NOT GUARANTEED. THIS INFORMATION IS SUBMITTED SUBJECT TO ERRORS, OMISSIONS, CHANGE(S) IN PRICE, TERMS, CONDITIONS, PRIOR SALES, OR WITHDRAWAL FROM THE MARKET WITHOUT NOTICE. BROKERS MAKE NO GUARANTEE OR WARRANTIES, EITHER EXPRESS OR IMPLIED AS TO THE COMPLETENESS OR ACCURACY OF THE INFORMATION CONTAINED HEREIN. IT IS THE RESPONSIBILITY OF THE READER TO INDEPENDENTLY CONFIRM THE ACCURACY AND COMPLETENESS OF THE INFORMATION CONTAINED HEREIN.

The Brokerage Realty ABQ., LLC
Commercial Real Estate Brokerage

C: 505-480-7524  www.Acre9.com

Jeremy Gonzales-Qualifying Broker
6152 Deergrass Circle NW Albuquerque, New Mexico 87120
Phone: 505-299-6983 Fax: 505-459-0969
SiteSelect@hotmail.com