

**8367 CORONA LOOP NE**  
ALBUQUERQUE, NM 87113



**SYCAMORE  
ASSOCIATES LLC**

COMMERCIAL & INDUSTRIAL REAL ESTATE



CONTACT AGENTS:



**GREG LEACH, SIOR**  
QUALIFYING BROKER  
(505)238-6481

[GREG@SYCAMORE-ASSOCIATES.COM](mailto:GREG@SYCAMORE-ASSOCIATES.COM)

**KRISTINA MARTINEZ**  
ASSOCIATE BROKER  
(575)621-3263

[KM@SYCAMORE-ASSOCIATES.COM](mailto:KM@SYCAMORE-ASSOCIATES.COM)

**MIKE LEACH, SIOR**  
QUALIFYING BROKER  
(505)345-5075

[MDL@SYCAMORE-ASSOCIATES.COM](mailto:MDL@SYCAMORE-ASSOCIATES.COM)

THIS STATEMENT WITH THE INFORMATION IT CONTAINS IS GIVEN WITH THE UNDERSTANDING THAT ALL NEGOTIATIONS RELATING TO THE PURCHASE, RENTING OR LEASING OF THE PROPERTY DESCRIBED ABOVE SHALL BE CONDUCTED THROUGH THIS OFFICE. ALL INFORMATION FURNISHED REGARDING PROPERTY FOR SALE RENTAL OR FINANCING IS FROM SOURCES DEEMED IN OUR OPINION TO BE RELIABLE BUT NO REPRESENTATION IS MADE AS TO THE ACCURACY THEREOF AND IS SUBMITTED SUBJECT TO ERRORS, OMISSIONS, CHANGE OF PRICE, RENTAL OR OTHER CONDITIONS. PRIOR SALE, LEASE OR FINANCING OR WITHDRAWAL WITHOUT NOTICE. REV. 7/19/23





**SYCAMORE  
ASSOCIATES LLC**  
COMMERCIAL & INDUSTRIAL REAL ESTATE

P.O. BOX 90608  
ALBUQUERQUE, NM 87199  
**(505) 345-5075 OFFICE**  
LICENSE #: 7070  
LICENSE#: 20093

## PROPERTY HIGHLIGHTS

### DETAILS

#### FOR LEASE

**\$14.56/SF/NNN**  
**\$7,200/MONTH/NNN**

### FEATURES

- NNN APPROXIMATELY: \$2.25
- NORTH I-25 CORRIDOR
- NR-LM ZONING
- FREE STANDING BUILDING
- 1.0198 ACRES
- SECURE FENCED YARD
- APPROXIMATELY 5,950 SF
- FENCED YARD
- RECEPTION AREA
- 2 PRIVATE OFFICES
- (6) 12' DRIVE-IN DOORS
- 15' WAREHOUSE CEILING
- 400 AMP SERVICE 120-208V, 3-PHASE POWER



#### CONTACT AGENTS:

**GREG LEACH, SIOR**

QUALIFYING BROKER

**(505)238-6481**

**GREG@SYCAMORE-ASSOCIATES.COM**

**KRISTINA MARTINEZ**

ASSOCIATE BROKER

**(575)621-3263**

**KM@SYCAMORE-ASSOCIATES.COM**

**MIKE LEACH, SIOR**

QUALIFYING BROKER

**(505)345-5075**

**MDL@SYCAMORE-ASSOCIATES.COM**

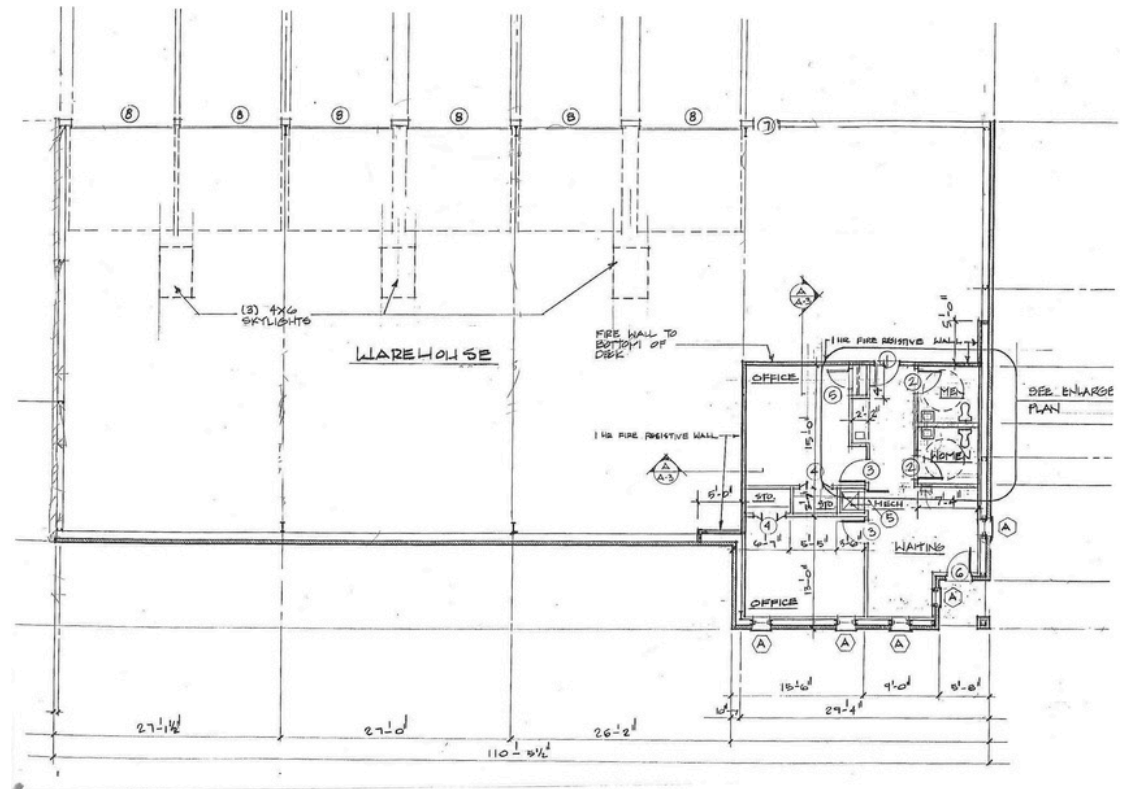
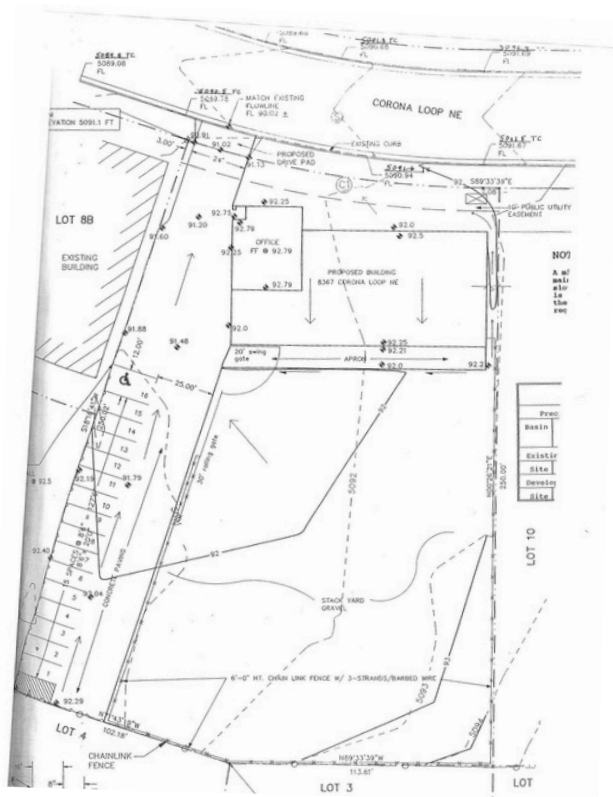


**SYCAMORE  
ASSOCIATES LLC**  
COMMERCIAL & INDUSTRIAL REAL ESTATE

P.O. BOX 90608  
ALBUQUERQUE, NM 87199  
**(505) 345-5075 OFFICE**  
LICENSE #: 7070  
LICENSE#: 20093

## LAYOUT

## 8367 CORONA LOOP NE ALBUQUERQUE, NM 87113



### CONTACT AGENTS:

**GREG LEACH, SIOR**  
QUALIFYING BROKER  
**(505)238-6481**  
[GREG@SYCAMORE-ASSOCIATES.COM](mailto:GREG@SYCAMORE-ASSOCIATES.COM)

**KRISTINA MARTINEZ**  
ASSOCIATE BROKER  
**(575)621-3263**  
[KM@SYCAMORE-ASSOCIATES.COM](mailto:KM@SYCAMORE-ASSOCIATES.COM)

**MIKE LEACH, SIOR**  
QUALIFYING BROKER  
**(505)345-5075**  
[MDL@SYCAMORE-ASSOCIATES.COM](mailto:MDL@SYCAMORE-ASSOCIATES.COM)





**SYCAMORE  
ASSOCIATES LLC**  
COMMERCIAL & INDUSTRIAL REAL ESTATE

P.O. BOX 90608  
ALBUQUERQUE, NM 87199  
**(505) 345-5075 OFFICE**  
LICENSE #: 7070  
LICENSE#: 20093

## LOCATION

**8367 CORONA LOOP NE**  
ALBUQUERQUE, NM 87113



IMAGES BY  
 **Google Maps**



IMAGES BY  
 **Google Maps**

### CONTACT AGENTS:

**GREG LEACH, SIOR**  
QUALIFYING BROKER  
**(505)238-6481**  
**GREG@SYCAMORE-ASSOCIATES.COM**

**KRISTINA MARTINEZ**  
ASSOCIATE BROKER  
**(575)621-3263**  
**KM@SYCAMORE-ASSOCIATES.COM**

**MIKE LEACH, SIOR**  
QUALIFYING BROKER  
**(505)345-5075**  
**MDL@SYCAMORE-ASSOCIATES.COM**