

# COMMERCIAL / RESIDENTIAL LAND



**4494 Hwy 14**  
Santa Fe, NM 87508

**800**

**SALE PRICE**  
**\$2,000,000**

**LOT/LAND**  
**± 7.03 Acres**  
(± \$6.53/SF)

**ZONING**  
Community College District  
Corporate offices,  
Retail, Medical,  
Faith Based, Entertainment,  
Residential

- FEATURES**
- All utilities to site
  - Highly visible site
  - Adjacent to I-25 and Hwy 14
  - Corner lot with traffic light
  - Potential for 55,000+ sq ft
  - See flyer for 6 new housing developments close by

**COMMERCIAL  
PROPERTIES, INC**  
**(505) 216-1500**

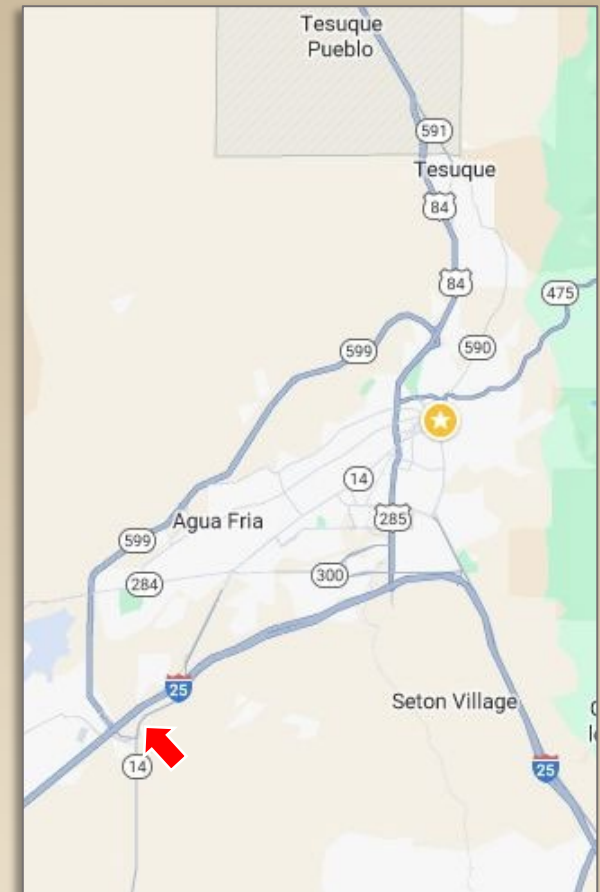
**2019 GALISTEO ST. SUITE L-1 SANTA FE, NM 87505**

INFORMATION ENCLOSED IS DEEMED TO BE FROM RELIABLE SOURCES, HOWEVER, IT IS SUBJECT TO CHANGE, WITHDRAWAL FROM THE MARKET AND INDEPENDENT VERIFICATION BY PROSPECTIVE BUYER OR LESSEE, AS A PART OF THEIR DUE DILIGENCE IN DETERMINING THE FEASIBILITY AND ACCURACY OF INFORMATION OF THE PROPERTY FOR THEIR USE.

**[www.CPI-NM.com](http://www.CPI-NM.com)**

**JAMES WHEELER, CCIM**  
**(505) 470-8081 (CELL)**  
**LICENSE # 18725**

# LOCATION MAP



**COMMERCIAL  
PROPERTIES, INC**  
**(505) 216-1500**

**2019 GALISTEO ST. SUITE L-1 SANTA FE, NM 87505**

INFORMATION ENCLOSED IS DEEMED TO BE FROM RELIABLE SOURCES, HOWEVER, IT IS SUBJECT TO CHANGE, WITHDRAWAL FROM THE MARKET AND INDEPENDENT VERIFICATION BY PROSPECTIVE BUYER OR LESSEE, AS A PART OF THEIR DUE DILIGENCE IN DETERMINING THE FEASIBILITY AND ACCURACY OF INFORMATION OF THE PROPERTY FOR THEIR USE.

**www.CPI-NM.com**

**JAMES WHEELER, CCIM**  
**(505) 470-8081 (CELL)**  
**LICENSE # 18725**





SHOPPING CENTER PROJECTED SQUARE FEET  
And PROJECTED DEMOGRAPHIC ESTIMATES

SHOPPING CENTER SITE PROJECTED SQ FT AND DEMOGRAPHICS	8/12/2024
4494 Highway 14, Santa Fe, NM	SQ FT
GROCERY STORE	23,271
RETAIL	14,340
SMALL RETAIL	
1	2,000
2	2,000
3	2,000
4	2,000
5	2,000
6	2,000
7	2,179
8	2,478
FREE STANDING PAD SITE	3,221
TOTAL	57,489

SITE TO DO BUSINESS-SOURCE		
MILE RADIUS	2024	2029
5 miles	51,668	57,239
7.5 miles	86,122	91,375
10 miles	117,279	121,401

Notes:

1. This Information has been obtained from sources believed to be reliable.
2. We have not verified it and make no guarantee, warranty or representation about it.
3. Any projections, opinions, assumptions or estimates used are for example only and do not represent the current or future performance of the property.
4. You and your advisors should conduct a careful, independent investigation for the property to determine to your satisfaction the suitability of the property for your intended use.
5. Property is subject to prior sale, lease or withdrawal without notice.

**COMMERCIAL  
PROPERTIES, INC**  
**(505) 216-1500**

**2019 GALISTEO ST. SUITE L-1 SANTA FE, NM 87505**

INFORMATION ENCLOSED IS DEEMED TO BE FROM RELIABLE SOURCES, HOWEVER, IT IS SUBJECT TO CHANGE, WITHDRAWAL FROM THE MARKET AND INDEPENDENT VERIFICATION BY PROSPECTIVE BUYER OR LESSEE, AS A PART OF THEIR DUE DILIGENCE IN DETERMINING THE FEASIBILITY AND ACCURACY OF INFORMATION OF THE PROPERTY FOR THEIR USE.

**www.CPI-NM.com**

**JAMES WHEELER, CCIM**  
**(505) 470-8081 (CELL)**  
**LICENSE # 18725**

## HOUSING NEAR SUBJECT PROPERTY

	PROJECT OR DEVELOPER	ACRES	UNITS	TYPE	NOTES	PROJECTED START OF CONSTRUCTION
1	SUBJECT PROPERTY	7.03				
2	TURQUOISE TRAIL	17.06	312	Apartments		2024/2025
3	CRESTA RIDGE	9.84	224	Apartments		2024/2025
4	COLIBRI	101	232	Homes		Under construction
5	ESENCIA	277	710	Homes		2024/2025
6	TIERR PINTADA	32.16	138	Homes		Under construction
7	METRO PARK	84	267	Manufactured home sites for sale	Starting process for approval for an affordable home project	2024/2025
	TOTALS	528.26	1,883			

## Notes:

1. This Information has been obtained from sources believed to be reliable.
2. We have not verified it and make no guarantee, warranty or representation about it.
3. Any projections, opinions, assumptions or estimates used are for example only and do not represent the current or future performance of the property.
4. You and your advisors should conduct a careful, independent investigation for the property to determine to your satisfaction the suitability of the property for your intended use.
5. Property is subject to prior sale, lease or withdrawal without notice

**COMMERCIAL  
PROPERTIES, INC**  
**(505) 216-1500**

**2019 GALISTEO ST. SUITE L-1 SANTA FE, NM 87505**

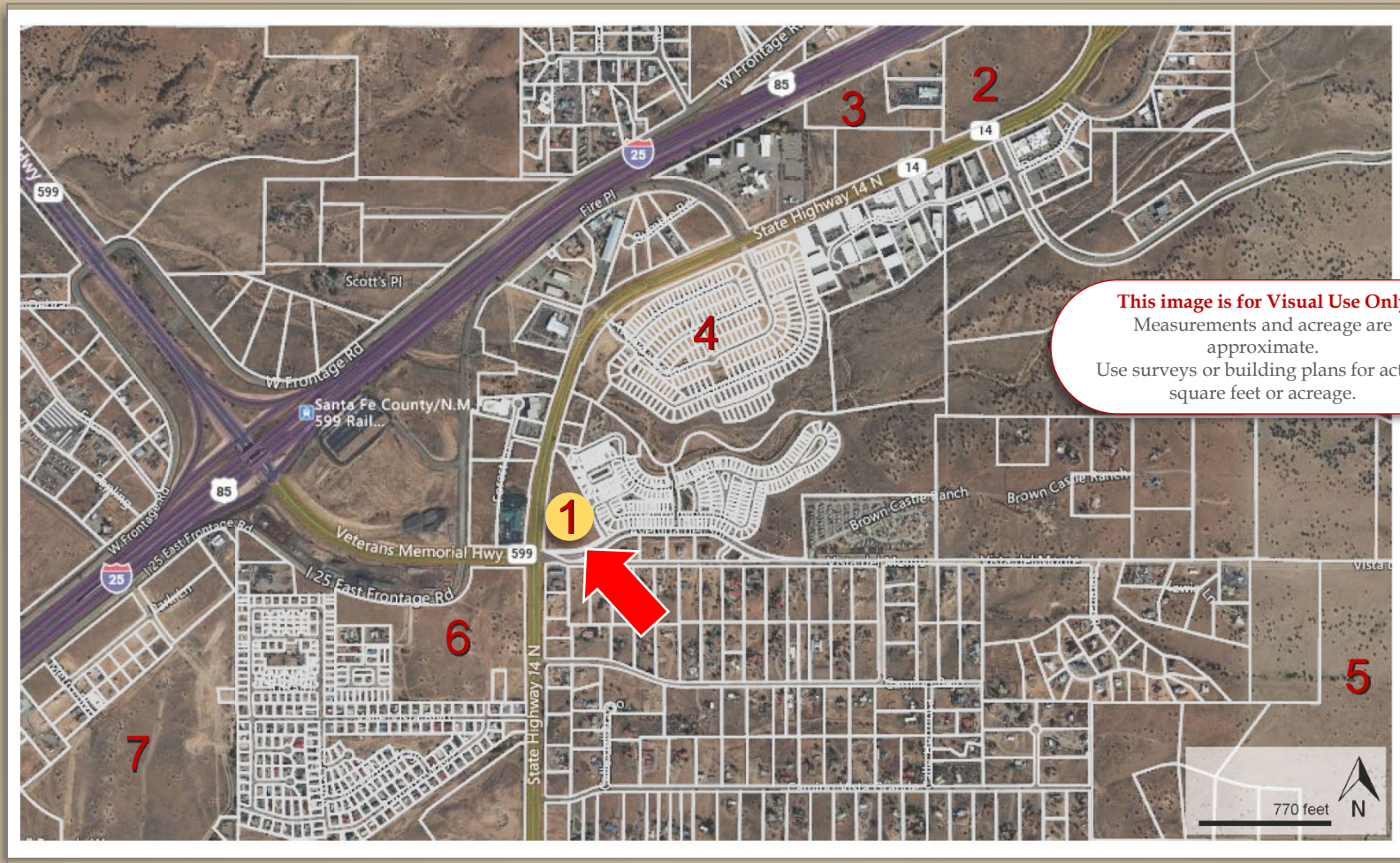
INFORMATION ENCLOSED IS DEEMED TO BE FROM RELIABLE SOURCES, HOWEVER, IT IS SUBJECT TO CHANGE, WITHDRAWAL FROM THE MARKET AND INDEPENDENT VERIFICATION BY PROSPECTIVE BUYER OR LESSEE, AS A PART OF THEIR DUE DILIGENCE IN DETERMINING THE FEASIBILITY AND ACCURACY OF INFORMATION OF THE PROPERTY FOR THEIR USE.

**www.CPI-NM.com**

**JAMES WHEELER, CCIM**  
**(505) 470-8081 (CELL)**  
**LICENSE # 18725**



## HOUSING LOCATIONS



**COMMERCIAL  
PROPERTIES, INC**  
**(505) 216-1500**

**2019 GALISTEO ST. SUITE L-1 SANTA FE, NM 87505**

INFORMATION ENCLOSED IS DEEMED TO BE FROM RELIABLE SOURCES, HOWEVER, IT IS SUBJECT TO CHANGE, WITHDRAWAL FROM THE MARKET AND INDEPENDENT VERIFICATION BY PROSPECTIVE BUYER OR LESSEE, AS A PART OF THEIR DUE DILIGENCE IN DETERMINING THE FEASIBILITY AND ACCURACY OF INFORMATION OF THE PROPERTY FOR THEIR USE.

**www.CPI-NM.com**

**JAMES WHEELER, CCIM**  
**(505) 470-8081 (CELL)**  
**LICENSE # 18725**

## ZONING ALLOWABLE USES

[ partial list ]

### Residential

- Single-family, Multi-family dwellings
- Retirement housing
- Community Homes

### Hotels or motels

- Hotel, Motels
- Resorts
- Retreats

### Commercial

- Shops, Department Stores or Shopping Center
- Offices or Office Park
- Restaurants
- Bar, or Tavern
- Office or Restaurant with residence above

### Industrial, manufacturing, and wholesale

- Light industrial structures
- Automotive paint and body
- Mini-warehouses, Mini-storage units

### Public assembly structures

- Performance theaters, movie theaters
- Religious facilities
- Fitness gyms
- Active, passive open space

### Arts, entertainment and Recreation

- Sports facilities
- Art galleries
- Theater, dance, music establishment

### Institutional or Community Facilities

- Community Center
- Schools, Daycare centers
- Library, Post Office

### Transportation-related facilities

- Above ground, underground automobile parking lots
- Railroad station

### Utility

- Distribution facility for water, gas, electric
- Waste and recycling facility

### Agriculture, forestry, and conservation/open space

- Grain silos and storage structures
- Greenhouses and Nurseries
- Farm product structures
- Outdoor recreation space, facilities

See attached full list of  
CCD NCC Use Table



**8.10.3.19 Use Table.** Uses permitted in the zoning districts are shown in the CCD Use Table 8-45. All uses are designated as permitted, accessory, or conditional, as further explained in Table 8-44. Accessory uses may be subject to specific regulations as provided in Chapter 10, and conditional uses are subject to the conditional use permit standards provided in Chapter 4.

**Table 8.44: Use Table Labels.**

<b>P</b>	<b>Permitted Use:</b> The letter “P” indicates that the listed use is permitted by right within the zoning district. Permitted uses are subject to all other applicable standards of the SLDC.
<b>A</b>	<b>Accessory Use:</b> The letter “A” indicates that the listed use is permitted only where it is accessory to a use that is permitted or conditionally approved for that district. Accessory uses shall be clearly incidental and subordinate to the principal use and located on the same tract or lot as the principal use.
<b>C</b>	<b>Conditional Use:</b> The letter “C” indicates that the listed use is permitted within the zoning district only after review and approval of a Conditional Use Permit in accordance with Chapter 14.
<b>DCI</b>	<b>Development of Countywide Impact:</b> The letters “DCI” indicate that the listed use is permitted within the zoning district only after review and approval as a Development of Countywide Impact.
<b>X</b>	<b>Prohibited Use:</b> The letter “X” indicates that the use is not permitted within the district.

The Use Matrix also includes Function, Activity and Structure Codes in accordance with the Land Based Classification System.

**Uses not specifically enumerated.** When a proposed use is not specifically listed in the use matrix, the Administrator may determine that the use is materially similar to a listed use if:

The proposed use is listed as within the same structure or function classification as the use specifically enumerated in the use matrix as determined by the Land-Based Classification Standards (LBCS) of the American Planning Association (APA); or

If the use cannot be located within one of the LBCS classifications, the Administrator shall refer to the most recent manual of the North American Industry Classification System (NAICS). The proposed use shall be considered materially similar if it falls within the same industry classification of the NAICS manual. A proposed use shall be treated in the same manner as the listed use to which it is materially



similar. For example, if the proposed use is materially similar to a permitted use, this proposed use shall also be a permitted use.

**Table 8.44: Use CCD Use Table.**

Use	CCD V	CCD NCC	CCD NC	CCD VN	CCD F	CCD IC	CCD RUR	CCD EN	CCD Open Space	CCD EC	CCD M	Special Conditions
<b>Residential</b>												
Single-family	P	P	P	P	P	P	P	P	X	P	P	
Accessory dwelling units	A	A	A	A	A	A	A	A	X	A	A	
Multifamily dwellings	P	P	P	P	C	C	C	C	X	P	P	
Retirement Housing (Apartments)	P	P	P	P	C	C	C	C	X	P	P	
Assisted living facility	p	P	P	P	P	P	P	P	X	P	X	
Life care or continuing care facilities	p	P	P	P	P	P	P	P	X	P	X	
Nursing facilities	p	P	P	P	P	P	P	P	X	P	X	
Community Home, NAICS 623210	P	P	P	P	P	P	P	P	X	P	X	
Barracks	X	X	X	X	X	A	X	X	X	X	X	
Dormitories	X	A	A	A	X	A	A	X	X	A	A	
Temporary structures, tents etc. for shelter	A	A	A	A	A	A	A	A	A	A	A	
<b>Hotels, motels or other accommodation services</b>												
Bed and Breakfast inn	P	P	P	P	P	X	P	P	X	X	P	
Rooming and boarding housing	P	P	P	P	P	X	P	P	X	X	X	
Resorts	X	P	P	X	X	X	P	X	X	P	P	
Retreats	P	P	P	P	P	P	P	X	X	P	P	
Hotels, motels, and tourist courts	X	P	C	X	X	X	X	X	X	P	P	
<b>Commercial</b>												
Shop or store with drive-through facility	X	P	P	X	X	X	X	X	X	P	P	
Restaurant, with incidental consumption of alcoholic beverages	P	P	P	X	X	P	X	X	X	P	P	
Restaurant, with no consumption of alcoholic beverages permitted	P	P	P	P	X	P	X	X	X	P	P	
Store or shop without drive-through facility	P	P	P	P	X	P	X	X	X	P	P	
Department store	X	P	P	X	X	X	X	X	X	C	C	
Warehouse discount store/superstore	X	C	C	X	X	X	X	X	X	C	C	
Market shops, including open markets	P	P	P	P	X	P	X	X	X	P	P	
Gasoline station	X	C	C	X	X	X	X	X	X	C	C	
Automobile repair and service	X	C	C	X	X	X	X	X	X	P	P	
Car dealer	X	C	X	X	X	X	X	X	X	C	C	
Bus, truck, mobile home, or large vehicle dealers	X	X	X	X	X	X	X	X	X	C	C	
Bicycle, motorcycle, all terrain vehicle dealers	X	X	X	X	X	X	X	X	X	P	P	
Boat or marine craft dealer	X	X	X	X	X	X	X	X	X	C	C	

Disclaimer: Zoning-use Table from Santa Fe County has been provided by a source we believed to be authoritative. However, buyers and/or users should verify their intended use with Santa Fe County.



Use	CCD V	CCD NCC	CCD NC	CCD VN	CCD F	CCD IC	CCD RUR	CCD EN	CCD Open Space	CCD EC	CCD M	Special Conditions
Automotive parts, accessories, or tires	X	C	C	X	X	X	X	X	X	P	P	
Gasoline service	X	X	X	X	X	X	X	X	X	C	C	
Lumberyard and materials	X	P	P	X	X	X	X	X	X	P	P	
Outdoor resale business	X	C	X	X	X	X	X	X	X	C	C	
Pawnshops	X	C	C	X	X	X	X	X	X	P	P	
Tap or Tasting Room	X	P	P	C	X	P	X	X	X	P	P	
Beer, wine, and liquor store (off-premises consumption of alcohol)	X	P	C	C	X	C	X	X	X	P	C	
Shopping center	X	C	C	X	X	X	X	X	X	P	P	
Convenience stores or centers	X	P	P	X	X	X	X	X	X	P	P	
Car care center	X	C	C	X	X	X	X	X	X	P	P	
Car washes	X	C	C	X	X	X	X	X	X	P	P	
Office or bank (without drive-through facility)	X	P	P	X	X	P	X	X	X	P	P	
Office (with drive-through facility)	X	P	P	X	X	P	X	X	X	P	P	
Office or store with residence on top	P	P	P	P	P	P	P	P	X	P	P	
Office-over storefront structure	X	P	P	X	X	P	X	X	X	P	P	
Research and development services (scientific, medical, and technology)	X	C	X	X	X	P	X	X	X	P	P	
Car rental and leasing	X	C	X	X	X	X	X	X	X	C	C	
Leasing trucks, trailers, recreational vehicles, etc.	X	C	X	X	X	X	X	X	X	C	C	
Services including pest control, janitorial, landscaping, carpet upholstery, cleaning and other services	X	P	P	X	X	P	X	X	X	P	P	
Bars, taverns and nightclubs	X	C	C	C	X	C	X	X	X	C	C	
Sexually oriented business	X	X	X	X	X	X	X	X	X	X	X	
Tattoo parlors	X	P	P	X	X	P	X	X	X	P	P	
<b>Industrial, manufacturing, and wholesale trade</b>												
Light industrial structures and facilities (note enumerated in Codes 2611-2615, below)	X	C	C	X	X	X	C	X	X	P	P	
Loft	X	C	C	X	X	X	C	X	X	P	P	
Mill-type factory structures	X	X	X	X	X	X	X	X	X	C	C	
Manufacturing plants	X	X	X	X	X	X	X	X	X	C	C	
Industrial parks	X	X	X	X	X	X	X	X	X	C	C	
Laboratory or specialized industrial facility	X	X	X	X	X	X	X	X	X	C	C	
Assembly and construction-type plants	X	X	X	X	X	X	X	X	X	C	C	
Process plants (metals, chemicals asphalt, concrete, etc.)	X	X	X	X	X	X	X	X	X	C	C	
Construction-related businesses	X	C	C	X	X	X	C	X	X	P	P	
Heavy construction	X	X	X	X	X	X	X	X	X	C	C	

Disclaimer: Zoning-use Table from Santa Fe County has been provided by a source we believed to be authoritative. However, buyers and/or users should verify their intended use with Santa Fe County.



Use	CCD V	CCD NCC	CCD NC	CCD VN	CCD F	CCD IC	CCD RUR	CCD EN	CCD Open Space	CCD EC	CCD M	Special Conditions
Machinery related	X	X	X	X	X	X	X	X	X	C	C	
Trade contractor, plumbing, electrical, roofing, painting, landscaping	X	C	C	X	X	X	C	X	X	P	P	
Automotive paint and body	X	C	C	X	X	X	X	X	X	P	P	
Automotive wrecking and graveyards, salvage yards, and junkyards	X	X	X	X	X	X	X	X	X	X	X	
Vehicle storage for towing or related business	X	X	X	X	X	X	X	X	X	X	X	
Demolition, building and structure business	X	X	X	X	X	X	X	X	X	C	C	
Warehouse or storage facility Structure	X	X	X	X	X	X	X	X	X	P	P	
Mini-warehouse, mini-storage units	X	C	C	X	X	X	X	X	X	C	C	
High-rise mini-warehouse	X	C	C	X	X	X	X	X	X	C	C	
Warehouse structure	X	X	X	X	X	X	X	X	X	P	P	
Produce warehouse	X	X	X	X	X	X	X	X	X	P	P	
Refrigerated warehouse or cold storage	X	X	X	X	X	X	X	X	X	P	P	
Large area distribution or transit warehouse	X	X	X	X	X	X	X	X	X	P	P	
Wholesale trade - durable goods	X	X	X	X	X	X	X	X	X	P	P	
Wholesale trade nondurable goods	X	X	X	X	X	X	X	X	X	P	P	
Food, textiles, and related products	X	X	X	X	X	X	X	X	X	C	C	
Wood, paper, and printing products	X	X	X	X	X	X	X	X	X	C	C	
Tank farms	X	X	X	X	X	X	X	X	X	C	C	
<b>Public Assembly Structures</b>												
Performance theater	X	P	P	X	X	P	X	X	X	C	P	
Movie theater	X	P	C	X	X	C	X	X	X	P	P	
Amphitheater	X	P	C	X	X	C	X	X	X	X	P	
Drive-in theaters	X	P	C	X	X	C	X	X	X	X	X	
Indoor games facility	X	P	C	X	X	C	X	X	X	X	P	
Amusement, sports, or recreation establishment not specifically enumerated	X	P	C	X	X	C	X	X	X	X	C	
Amusement or theme park	X	X	X	X	X	X	X	X	X	C	C	
Arcade	X	P	C	X	X	C	X	X	X	X	C	
Miniature golf establishment	X	P	P	C	C	P	X	X	X	X	X	
Fitness, recreational sports, gym, or athletic club	X	P	P	X	X	P	X	X	X	P	P	
Bowling, billiards, pool, etc.	X	P	C	X	X	C	X	X	X	X	X	
Skating rinks	X	P	C	X	X	C	X	X	X	X	X	
Sports stadium or arena	X	P	P	P	X	P	P	X	C	C	C	
Racetrack or raceway	X	X	X	X	X	X	X	X	X	C	C	

Disclaimer: Zoning-use Table from Santa Fe County has been provided by a source we believed to be authoritative. However, buyers and/or users should verify their intended use with Santa Fe County.



Use	CCD V	CCD NCC	CCD NC	CCD VN	CCD F	CCD IC	CCD RUR	CCD EN	CCD Open Space	CCD EC	CCD M	Special Conditions
Exhibition, convention or conference structure	X	P	P	X	X	P	X	X	X	C	C	
Religious facilities	P	P	P	P	P	P	P	P	X	P	P	
Covered or partially covered atriums and public enclosure	P	P	P	P	P	P	P	P	C	C	C	
Passenger terminal, mixed mode	X	P	P	P	X	P	X	X	X	P	P	
Active open space/ athletic fields/golf courses	P	P	P	P	P	P	P	X	P	P	C	
Passive open space	P	P	P	P	P	P	P	P	P	P	P	
<b>Arts, entertainment and Recreation</b>												
Active leisure sports and related activities	C	P	C	P	C	C	C	C	C	C	C	
Movie Ranch	X	P	P	X	C	X	P	X	X	X	P	
Camps, camping, and related establishments	X	X	X	P	X	C	C	X	C	C	C	
Exhibitions and art galleries	X	P	P	X	X	P	X	X	X	C	C	
Performing arts or supporting establishment	X	P	P	X	X	P	X	X	X	C	P	
Theater, dance, or music establishment	X	P	P	X	X	P	X	X	X	C	P	
<b>Institutional or Community Facilities</b>												
Community center	X	P	P	C	C	P	X	X	X	X	X	
Hospitals	X	X	X	X	X	C	X	X	X	C	C	
Medical clinics	X	P	P	P	X	P	X	X	X	X	X	
Social assistance, welfare, and charitable services (not otherwise enumerated)	X	P	P	P	X	P	X	X	X	X	X	
Child and youth services	X	P	P	P	X	P	X	X	X	X	X	
Child care institution	P	P	P	P	P	P	P	P	X	P	P	
Day care center	P	P	P	P	P	P	P	P	X	P	P	
Community food services	P	P	P	P	P	P	P	P	X	P	P	
Emergency and relief services	P	P	P	P	P	P	P	P	X	P	P	
Other family services	X	P	P	P	X	P	X	X	X	X	X	
Services for elderly and disabled	X	P	P	P	X	P	X	X	X	X	X	
Animal hospitals	X	C	C	X	X	C	C	X	X	X	X	
School or university (privately owned)	X	P	P	P	C	P	C	X	X	C	C	
Grade school (privately owned)	X	P	P	P	C	P	C	X	X	C	C	
College or university facility (privately owned)	X	P	P	P	C	P	C	X	X	C	C	
Technical, trade, and other specialty schools	X	P	P	X	X	P	X	X	X	X	X	
Library	X	P	P	X	X	P	X	X	X	P	P	
Museum, exhibition, or similar facility	X	P	P	X	X	P	X	X	X	C	C	

Disclaimer: Zoning-use Table from Santa Fe County has been provided by a source we believed to be authoritative. However, buyers and/or users should verify their intended use with Santa Fe County.



Use	CCD V	CCD NCC	CCD NC	CCD VN	CCD F	CCD IC	CCD RUR	CCD EN	CCD Open Space	CCD EC	CCD M	Special Conditions
Planetarium	X	P	P	X	X	P	X	X	X	C	C	
Aquarium	X	P	P	X	X	P	X	X	X	C	C	
Zoological parks	X	P	P	X	X	P	X	X	X	C	C	
Public safety related facility	P	P	P	P	P	P	P	P	X	P	P	
Fire and rescue station	P	P	P	P	P	P	P	P	X	P	P	
Police station	P	P	P	P	P	P	P	P	X	P	P	
Emergency operation center	P	P	P	P	P	P	P	P	X	P	P	
Correctional or rehabilitation facility	X	X	X	X	X	C	X	X	X	C	C	
Cemetery, monument, tombstone, or mausoleum	X	X	X	P	P	X	P	X	C	X	X	
Funeral homes	X	X	X	X	X	C	X	X	X	C	C	
Cremation facilities	X	X	X	X	X	C	X	X	X	C	C	
Public administration	X	P	P	X	X	P	X	X	X	P	P	
Post offices	X	P	P	X	X	P	X	X	X	P	P	
Space research and technology	X	C	X	X	X	P	X	X	X	P	P	
Clubs or lodges	X	P	P	X	C	C	X	X	X	P	P	
<b>Transportation-related facilities</b>												
Commercial automobile parking lots	X	P	P	X	X	P	X	X	X	P	P	
Commercial automobile parking garages	X	P	P	X	X	P	X	X	X	P	P	
Surface parking, open	X	P	P	X	X	P	X	X	X	P	P	
Surface parking, covered	X	P	P	X	X	P	X	X	X	P	P	
Underground parking structure with ramps	X	P	P	X	X	P	X	X	X	P	P	
Rooftop parking facility	X	P	P	X	X	P	X	X	X	P	P	
Bus terminal	X	P	P	P	X	P	X	X	X	P	P	
Bus stop shelter	P	P	P	P	P	P	P	P	X	P	P	
Truck storage and maintenance facilities	X	X	X	X	X	C	X	X	X	C	C	
Truck freight transportation facilities	X	X	X	X	X	X	X	X	X	C	C	
Light rail transit lines and stops	P	P	P	P	P	P	P	P	P	P	P	
Local rail transit storage and maintenance facilities	X	X	X	X	X	X	X	X	X	P	P	
Taxi and limousine service maintenance and storage facilities	X	X	X	X	X	C	X	X	X	C	C	
Taxi and limousine service dispatch facilities	X	X	X	X	X	X	X	X	X	P	P	
Bus transportation storage and maintenance facilities	X	X	X	X	X	C	X	X	X	C	C	
Towing and other road service facilities, excluding automobile salvage, wrecking, or permanent vehicle storage	X	X	X	X	X	X	X	X	X	C	C	
Long-distance or bulk pipelines for petroleum products, natural gas, or mineral slurry	C	C	C	C	C	C	C	C	C	C	C	

Disclaimer: Zoning-use Table from Santa Fe County has been provided by a source we believed to be authoritative. However, buyers and/or users should verify their intended use with Santa Fe County.



Use	CCD V	CCD NCC	CCD NC	CCD VN	CCD F	CCD IC	CCD RUR	CCD EN	CCD Open Space	CCD EC	CCD M	Special Conditions
Courier and messenger service facilities	X	X	X	X	X	X	X	X	X	C	C	
Commercial airports	X	X	X	X	X	X	X	X	X	X	X	
Private airplane runways and landing strips	X	X	X	X	X	X	X	X	X	X	X	
Airport maintenance and hangar facilities	X	X	X	X	X	X	X	X	X	X	X	
Heliport facility	X	X	X	X	X	X	X	X	X	X	X	
Helistops	X	X	X	X	X	X	X	X	X	X	X	
Glide port, stolport, ultralight airplane, or balloon port facility	X	X	X	X	X	X	X	X	X	X	X	
Railroad tracks, spurs, and sidings	P	P	P	P	P	P	P	P	P	P	P	
Railroad switching, maintenance, and storage facility	P	P	P	P	P	P	P	P	X	P	P	
Railroad passenger station	P	P	P	P	P	P	P	P	X	P	P	
Railroad freight facility	X	X	X	X	X	X	X	X	X	C	C	
<b>Utility</b>												
Local distribution facilities for water, natural gas, and electric power	X	C	C	C	C	P	C	C	C	P	P	
Telecommunications lines	X	C	C	C	C	P	C	C	C	P	P	
Electric power substations	X	C	C	X	C	C	C	C	X	C	C	
High-voltage electric power transmission lines	X	C	C	C	C	P	C	C	C	P	P	
Dam	X	C	C	C	C	C	C	C	C	C	C	
Livestock watering tank or impoundment		P	P	P	P	P	P	P	P	P	P	
Levee	X	C	C	C	C	C	C	C	C	C	C	
Water tank (elevated, at grade, or underground)	C	C	C	C	C	P	C	C	C	P	P	
Water wells, well fields, and bulk water transmission pipelines	C	C	C	C	C	P	C	C	C	P	P	
Water treatment and purification facility	C	C	C	C	C	P	C	C	C	P	P	
Water reservoir	C	C	C	C	C	C	C	C	C	C	C	
Irrigation facilities, including impoundments for on-site irrigation or acequia system irrigation	P	P	P	P	P	P	P	P	P	P	P	
Wastewater storage or pumping station facility, lift stations, and collection lines	C	C	C	C	C	P	C	C	C	P	P	
Solid waste landfill facility	X	X	X	X	X	X	X	X	X	X	X	
Composting facility	C	X	X	X	X	C	C	X	C	C	X	
Recycling transfer center	P	P	P	P	P	P	P	P	P	P	P	
Solid waste collection transfer station (Governmental)	X	X	X	X	C	X	C	X	X	C	C	
Solid waste collection transfer station (Private)	X	X	X	X	C	X	C	X	X	C	C	

Disclaimer: Zoning-use Table from Santa Fe County has been provided by a source we believed to be authoritative. However, buyers and/or users should verify their intended use with Santa Fe County.



Use	CCD V	CCD NCC	CCD NC	CCD VN	CCD F	CCD IC	CCD RUR	CCD EN	CCD Open Space	CCD EC	CCD M	Special Conditions
Solid waste combustor or incinerator	X	X	X	X	X	X	X	X	X	X	X	
Septic tank service, repair, and installation business	X	X	X	X	X	X	X	X	X	P	P	
Household hazardous waste collection facility	X	X	X	X	X	X	X	X	X	C	X	
Hazardous waste storage facility	X	X	X	X	X	X	X	X	X	C	X	
Hazardous waste treatment and disposal facility	X	X	X	X	X	X	X	X	X	C	X	
Sewage treatment plant and disposal facilities	C	C	C	C	C	P	C	X	C	P	X	
Gas or electric power generation facility	C	C	C	X	C	C	C	X	X	C	C	
New Wireless Communication Facility/Modification of existing wireless communication facility with substantial changes	X	X	X	X	C	P	X	X	C	P	P	
Modification of existing wireless communication facility with no substantial changes/Collocation	P	P	P	P	P	P	P	P	P	P	P	
Roof Mounted/Surface Mounted/Stealth	C	C	C	C	C	C	C	C	C	p	p	
Amateur Radio Antenna	p	p	p	p	p	p	p	p	p	P	P	
Weather stations or transmitters	X	C	C	X	X	P	X	X	X	P	P	
Environmental monitoring station (air, soil, etc.)	X	C	C	X	X	P	X	X	X	P	P	
Commercial solar energy production facility	X	C	C	X	X	C	X	X	X	C	C	
Geothermal production facility	X	C	C	X	X	C	X	X	X	C	C	
Large scale wind facility (DCI)	X	C	C	X	X	C	X	X	X	C	C	
Highway rest stops and welcome centers	P	P	P	P	P	P	P	P	X	P	P	
Fountain, sculpture, or other similar decorative structures	P	P	P	P	P	P	P	P	X	P	P	
Permanent outdoor stage, bandstand, or similar structure	X	P	P	X	X	P	X	X	X	P	P	
<b>Agriculture, forestry, and conservation/open space</b>												
Grain silos and other storage structure for grains and agricultural products	A	A	A	A	A	C	A	A	X	X	X	
Animal production that includes slaughter	X	X	X	X	X	X	X	X	X	C	X	
Livestock pens or hog houses	X	X	X	X	X	X	X	X	X	C	C	
Commercial greenhouses	C	C	C	C	C	C	C	C	C	P	P	
Nurseries and other growing of ornamental plants	P	P	P	P	P	P	P	P	X	P	P	
Stables and other equine-related facilities - All personal use and commercial up to 12 horses.	P	C	C	C	P	P	P	P	P	P	P	

Disclaimer: Zoning-use Table from Santa Fe County has been provided by a source we believed to be authoritative. However, buyers and/or users should verify their intended use with Santa Fe County.

Use	CCD V	CCD NCC	CCD NC	CCD VN	CCD F	CCD IC	CCD RUR	CCD EN	CCD Open Space	CCD EC	CCD M	Special Conditions
Stables and other equine-related facilities - Commercial over 12 horses	C	X	X	X	C	C	C	C	C	C	C	
Kennels and commercial dog breeding facilities	X	C	C	X	C	P	C	X	X	P	P	
Apiary and other related structures	P	P	P	P	P	P	P	P	P	P	P	
Crop production outdoor	P	P	P	P	P	P	P	P	P	P	P	
Crop production greenhouse	P	P	P	P	P	P	P	P	P	P	P	
Display or sale of agricultural products raised on the same premises	A	X	A	X	A	A	A	A	A	A	X	
Forestry and logging operations	X	X	X	X	X	X	X	X	X	X	X	
Game preserves and retreats	X	X	X	X	X	X	X	X	X	X	X	
Support business and operations for agriculture and forestry	X	X	X	X	A	X	A	X	X	C	C	
Parks, open space areas, conservation areas, and preservation areas	P	P	P	P	P	P	P	P	P	P	P	
Public or community outdoor recreation facilities	P	P	P	P	P	P	P	P	P	P	P	
Concentrated animal feeding operation	X	X	X	X	X	X	X	X	X	X	X	
Grazing and ranching of livestock	P	P	P	P	P	P	P	P	P	P	P	10.3
Dairy farms	X	X	X	X	X	X	X	X	X	X	X	
Other farm and farming-related structures (Sale of farming products)	A	A	A	A	P	A	P	A	A	A	A	
Poultry farms and poultry production facilities	X	X	X	X	X	X	X	X	X	X	X	
Sheds, or other agricultural facilities	A	A	A	A	P	A	P	A	A	A	A	
Animal waste lagoons (DCI)	X	X	X	X	X	X	X	X	X	X	X	
<b>Mining and extraction establishments</b>												
Oil and natural gas exploration or extraction	DCI	DCI	DCI	DCI	DCI	DCI	DCI	DCI	DCI	DCI	DCI	
Hard Rock mining	DCI	DCI	DCI	DCI	DCI	DCI	DCI	DCI	DCI	DCI	DCI	
Small Scale Sand and Gravel Extraction	X	X	X	X	C	X	C	X	C	C	X	
Sand and Gravel Extraction (as specified in Section 11.10)	DCI	DCI	DCI	DCI	DCI	DCI	DCI	DCI	DCI	DCI	DCI	

**\* Subject to inclusion in approved list of uses that is part of the site plan for the Mixed Use and Planned Development District.**

Disclaimer: Zoning-use Table from Santa Fe County has been provided by a source we believed to be authoritative. However, buyers and/or users should verify their intended use with Santa Fe County.