

LARGE BOX SITE FOR SALE

77,400+/- SF BLDG AREA on 8.64+ AC

1900 US Highway 54 S, Alamogordo, NM 88310





- Major Hwy Junction (70 & 54) in South Alamogordo Near Major Air Force Base
- Flexible Site for Variety of Uses with 77,400+/- SF of Total Building Area on 8.64 AC+/-
- Centralized Hub Serving Vast Regional Trade Area
- Large, Multi-Purpose Site is Easily Adaptable for Retail, Entertainment, Industrial, Institutional, Educational, Film-Related and/or Storage Uses
- Ability to Create a High-Profile Perimeter Pads Along State Road 54
- Main Building Consists of 67,400+/- SF Envelope with 27'+ Ceiling Heights Throughout and approx. 5,000 SF of Office Area
- Two Dock Doors Along North side of Main with Ability to Accommodate More
- Mezzanine Area Consisting of 4,700 SF+/- (Not Included in Main Bldg Area)
- Adjoining 10,000 SF Retail Strip Retail Building Available for Smaller User(s)
- US Highways 70 & US 54 Connect to Numerous Communities in SE NM
- Strong Traffic Counts Along Both US Hwy 70 and US Hwy 54
- Site Abuts Significant Truck Relief Route
- Abutting Undeveloped 11 AC to the South Could Be Assembled for Future Development
- For Sale at \$6.275 Million, Equivalent to \$81+/-/Bldg SF

CONTACT

Mark or Mariah Edwards

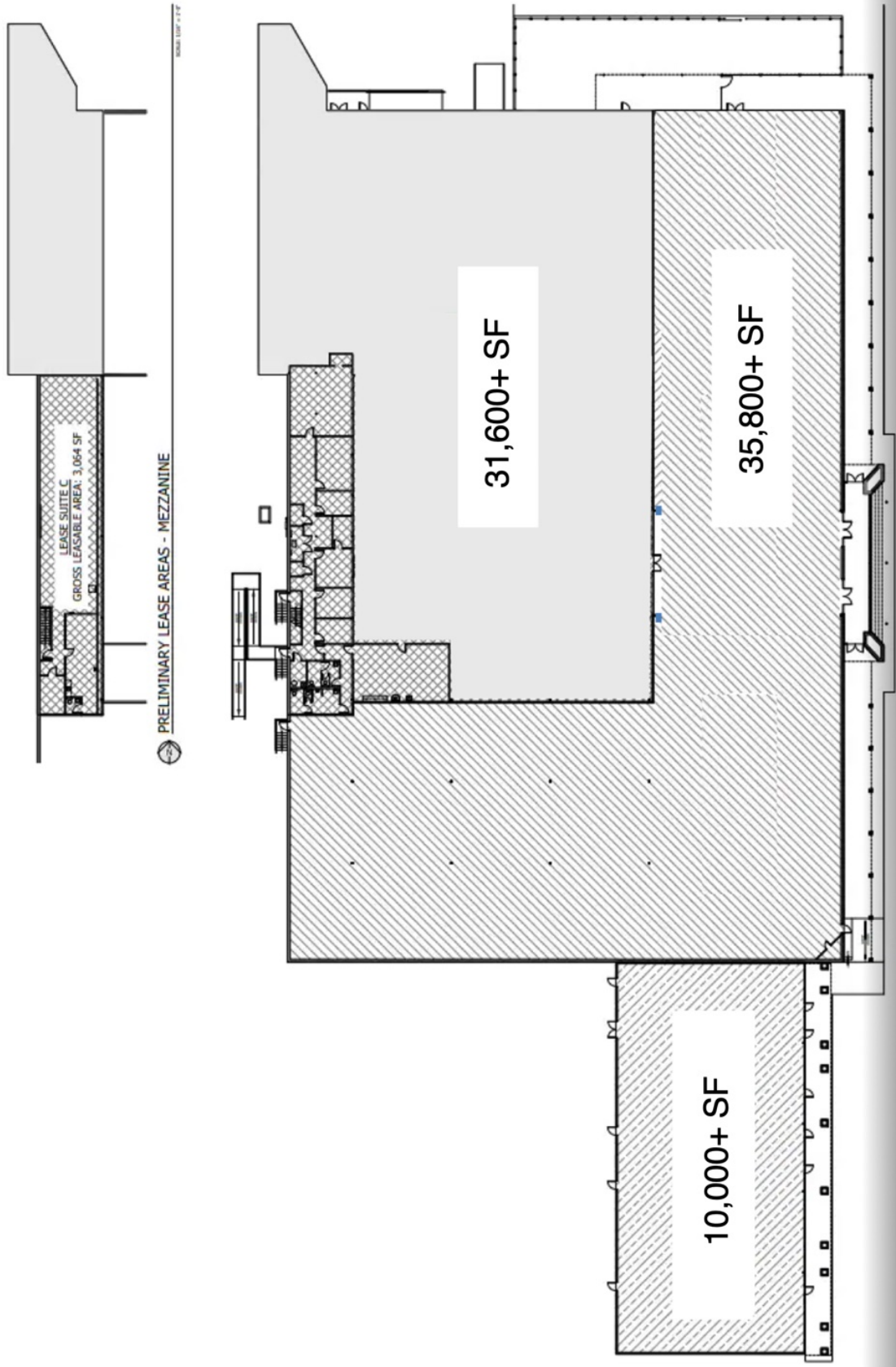


Leasing ♦ Brokerage ♦ Development

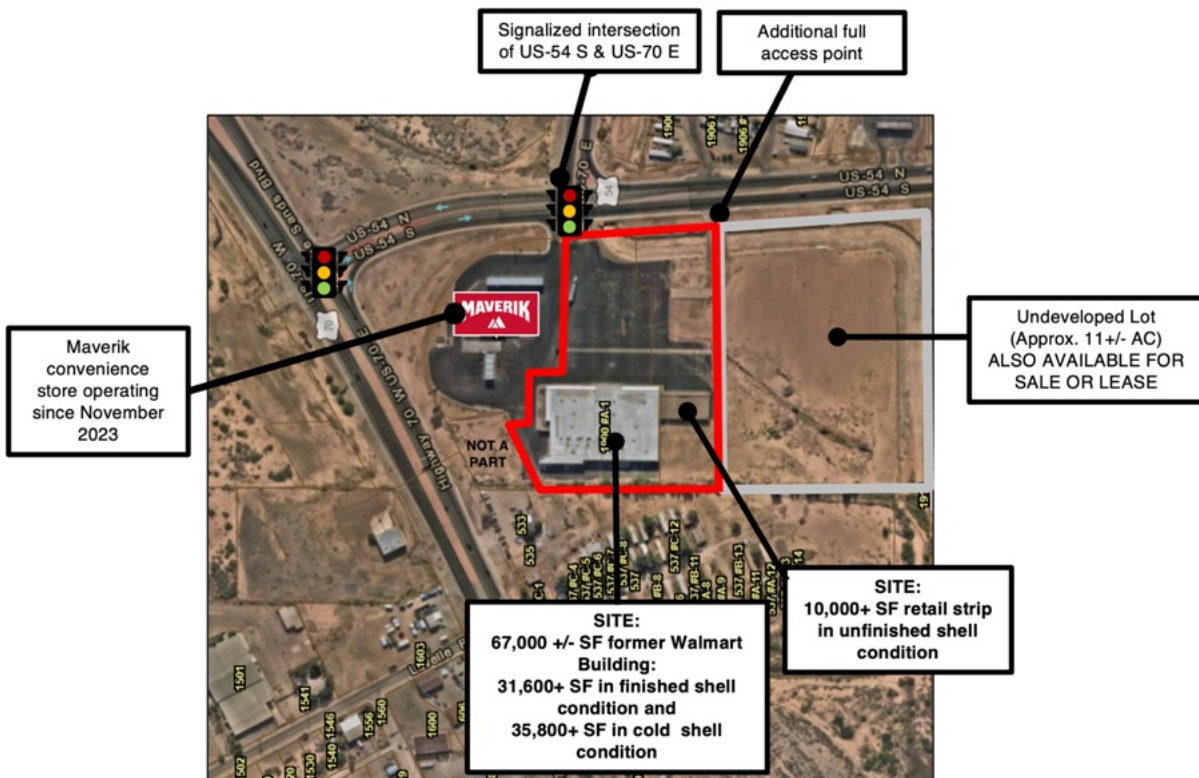
Executive West Bldg. 2929 Coors Blvd. NW Ste. #202
Albuquerque, NM 87120
505-998-7298 Cell 505-350-8211 or 505-228-2258 Fax 505-998-7299
Mark.Edwards@EdwardsCommercialRealty.com
Mariah@edwardscommercialrealty.com

This information was obtained from sources deemed reliable. No warranty is made by Edwards Commercial Realty, LLC as to the accuracy or completeness of this material. The pricing and sale/lease terms are subject to change.

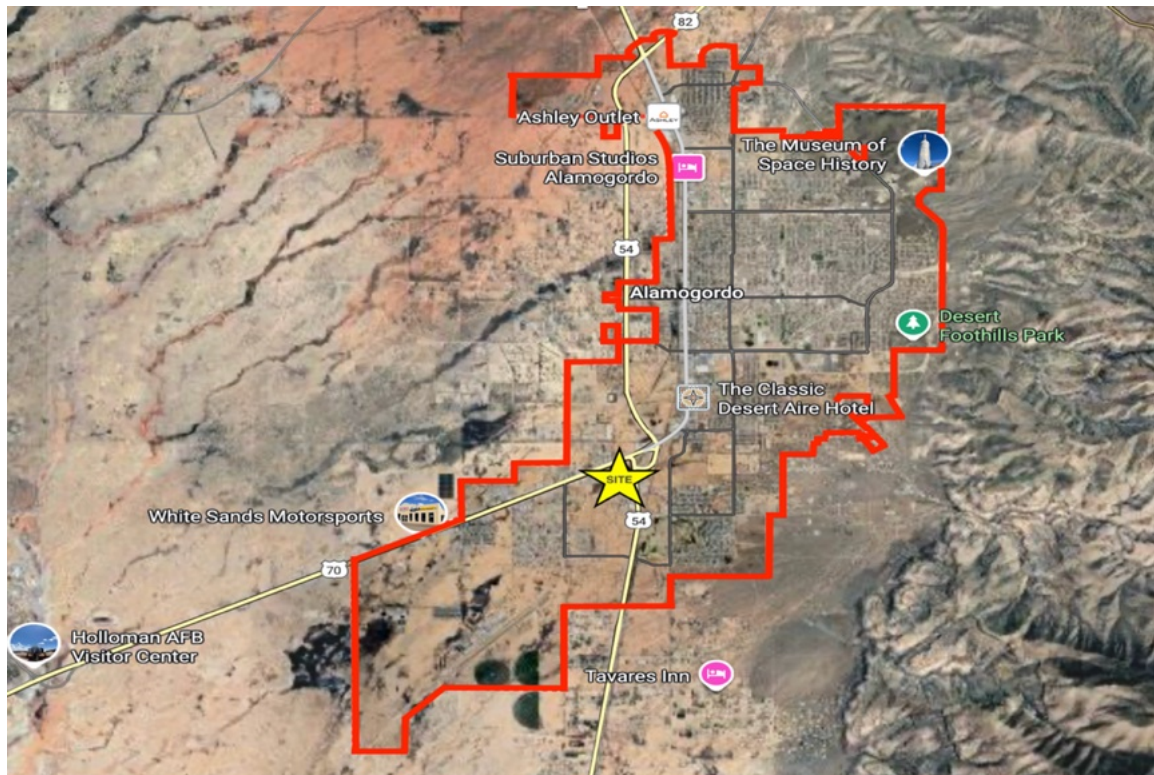
CURRENT FLOOR PLAN



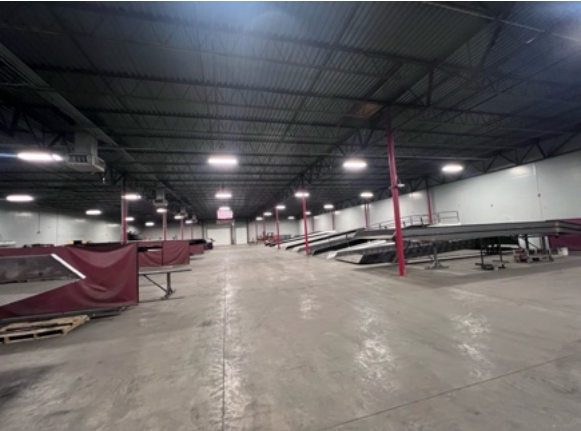
CURRENT SITE CONDITION



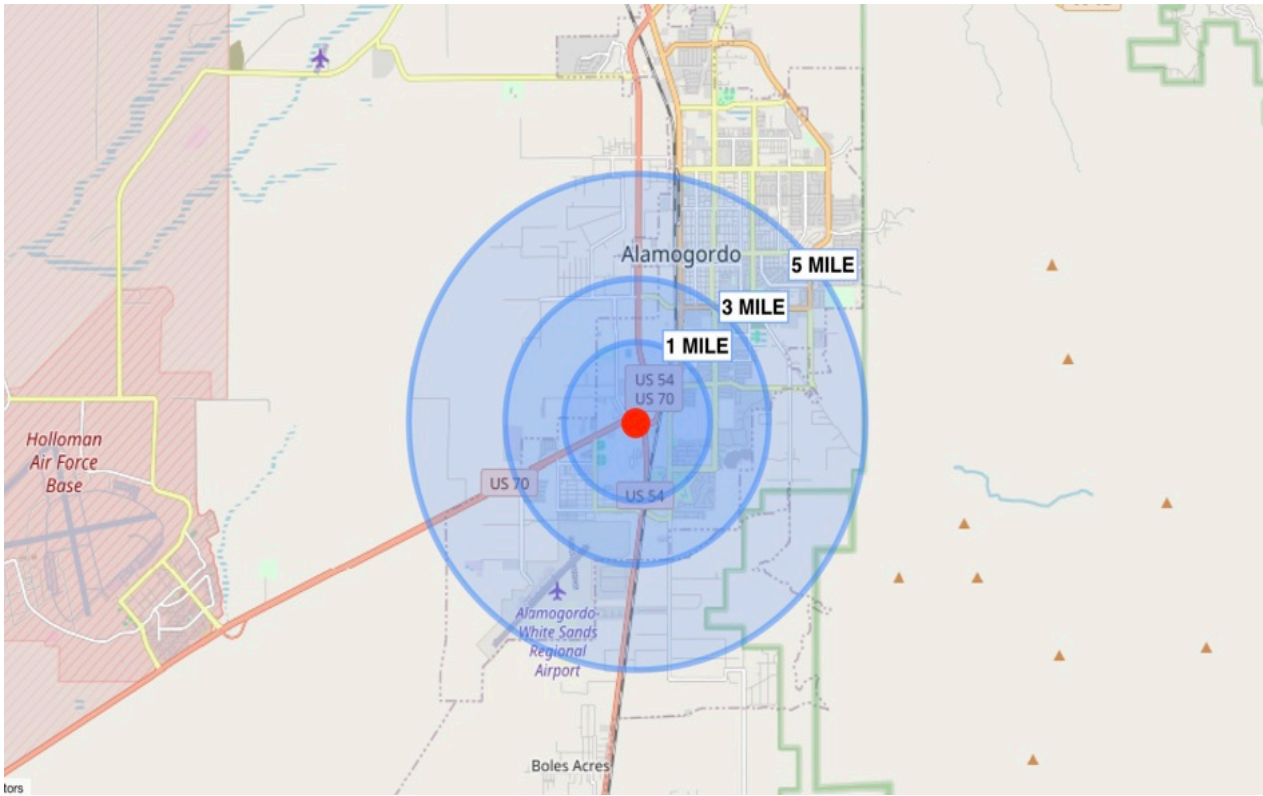
LOCATION



BUILDING PIX



DEMOGRAPHICS



POPULATION

1 MILE	3 MILE	5 MILE
2,968	18,880	33,354



AVG
HOUSEHOLD
INCOME

1 MILE	3 MILE	5 MILE
\$60,745	\$65,378	\$66,312



DAYTIME
EMPLOYMENT

1 MILE	3 MILE	5 MILE
1,083	7,490	12,763



TRAFFIC

Highway 70	18,368 VPD
Highway 54	17,037 VPD