



**\$19.00**

**Full Service**

**Call Erin Quinn  
505.266.5711**

**C&S Real Estate  
& Development, LLC**

**6001 Indian School NE  
Suite 200  
Albuquerque, NM 87110**

**505.266.5711  
www.csrednm.com**



**Sycamore Plaza  
5600 Wyoming Blvd NE  
Albuquerque, NM 87111**

**Premier NE Heights Location  
Near Wyoming & Academy**

**Exceptional office location with quick access to  
major commuting routes such as  
Academy, Paseo del Norte, and I-25.**

**Upscale office building with high ceilings, elegant  
atrium and large Common Conference Room**

**Walking distance to restaurants and retail**

**Tenant mix of professional services  
for quiet executive atmosphere**





**\$19.00**

**Full Service**

**Call Erin Quinn  
505.266.5711**

**C&S Real Estate  
& Development, LLC**  
6001 Indian School NE  
Suite 200  
Albuquerque, NM 87110  
**505.266.5711**  
**www.csrednm.com**



**Sycamore Plaza  
5600 Wyoming Blvd NE  
Albuquerque, NM 87111**

## **Garden Level—Suite 10**

**6,910 RSF**







**\$19.00**

**Full Service**

**Call Erin Quinn  
505.266.5711**

**C&S Real Estate  
& Development, LLC**

**6001 Indian School NE**

**Suite 200**

**Albuquerque, NM 87110**

**505.266.5711**

**www.csrednm.com**

**Sycamore Plaza**

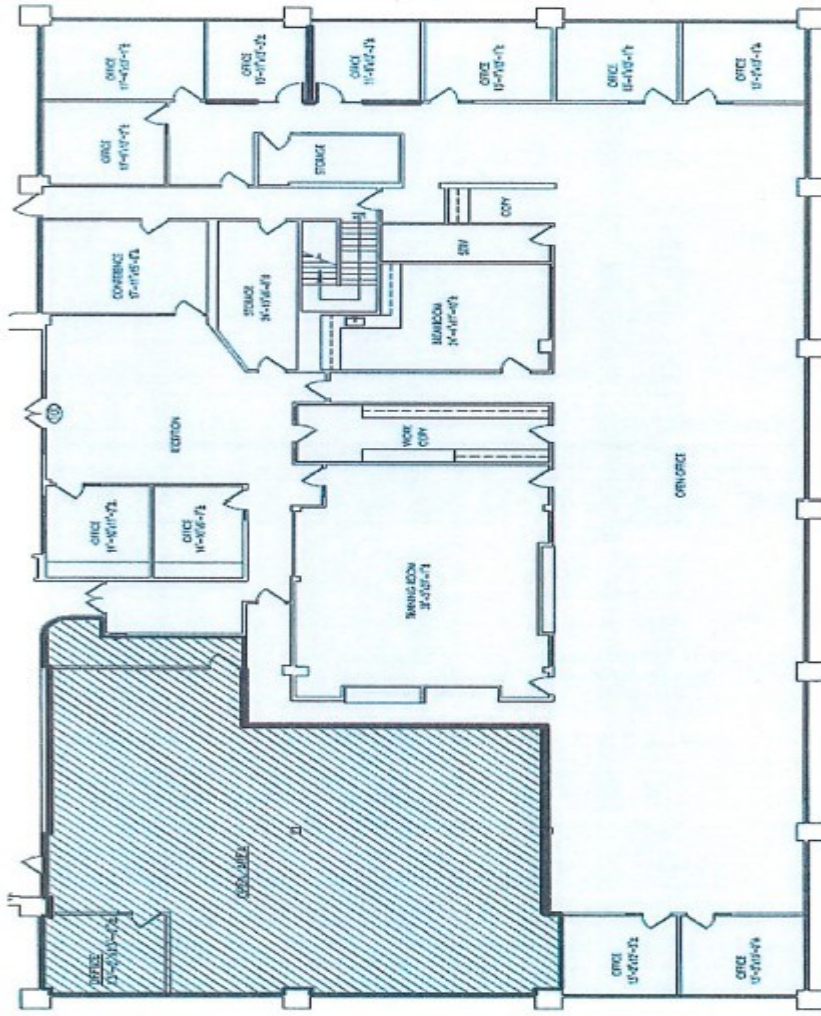
**5600 Wyoming Blvd NE**

**Albuquerque, NM 87111**

## **First Floor—Suites 100 & 110**

**14,733 RSF**

**AVAILABLE JANUARY 1, 2026**





**\$19.00**

**Full Service**

**Call Erin Quinn  
505.266.5711**

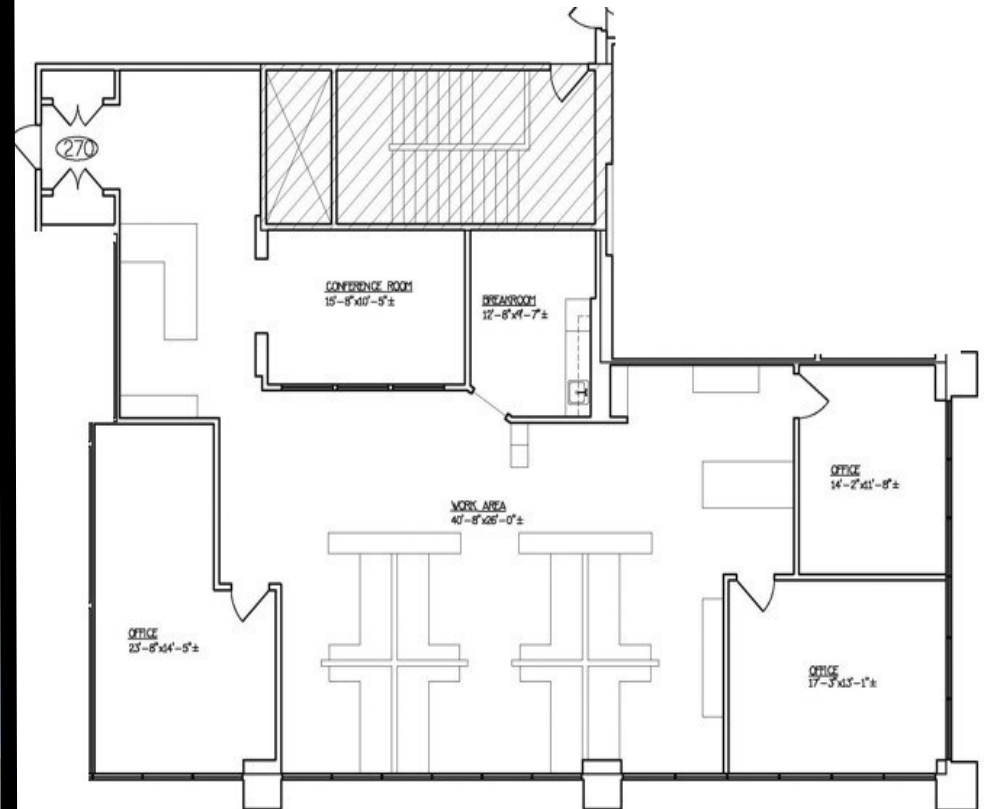
**C&S Real Estate  
& Development, LLC**  
6001 Indian School NE  
Suite 200  
Albuquerque, NM 87110  
**505.266.5711**  
**www.csrednm.com**



**Sycamore Plaza  
5600 Wyoming Blvd NE  
Albuquerque, NM 87111**

## **Second Floor—Suite 270**

**2,817 RSF**







**Sycamore Plaza**

**5600 Wyoming Blvd NE  
Albuquerque, NM 87111**

**\$19.00**

**Full Service**

**Call Erin Quinn  
505.266.5711**

**C&S Real Estate  
& Development, LLC**

**6001 Indian School NE**

**Suite 200**

**Albuquerque, NM 87110**

**505.266.5711**

**www.csrednm.com**

