

PLAT OF SURVEY

LOT 2, MBBSK SUBDIVISION
 PLAT FILED DECEMBER 28, 2017, IN
 PLAT BOOK 24, PAGE 282, IN THE
 DONA ANA COUNTY RECORDS
 CITY OF LAS CRUCES
 DONA ANA COUNTY
 NEW MEXICO

INSTRUMENT OR RECORD:
 FILED:
 Instrument #937584
 OF THE DONA ANA COUNTY RECORDS
 DRAWN BY: S. Peale
 FIELD BY: E.R., C.S.
 JOB NO.: 18-01-0007-2
 DATE: January 4, 2018

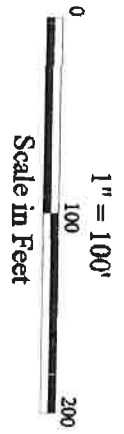
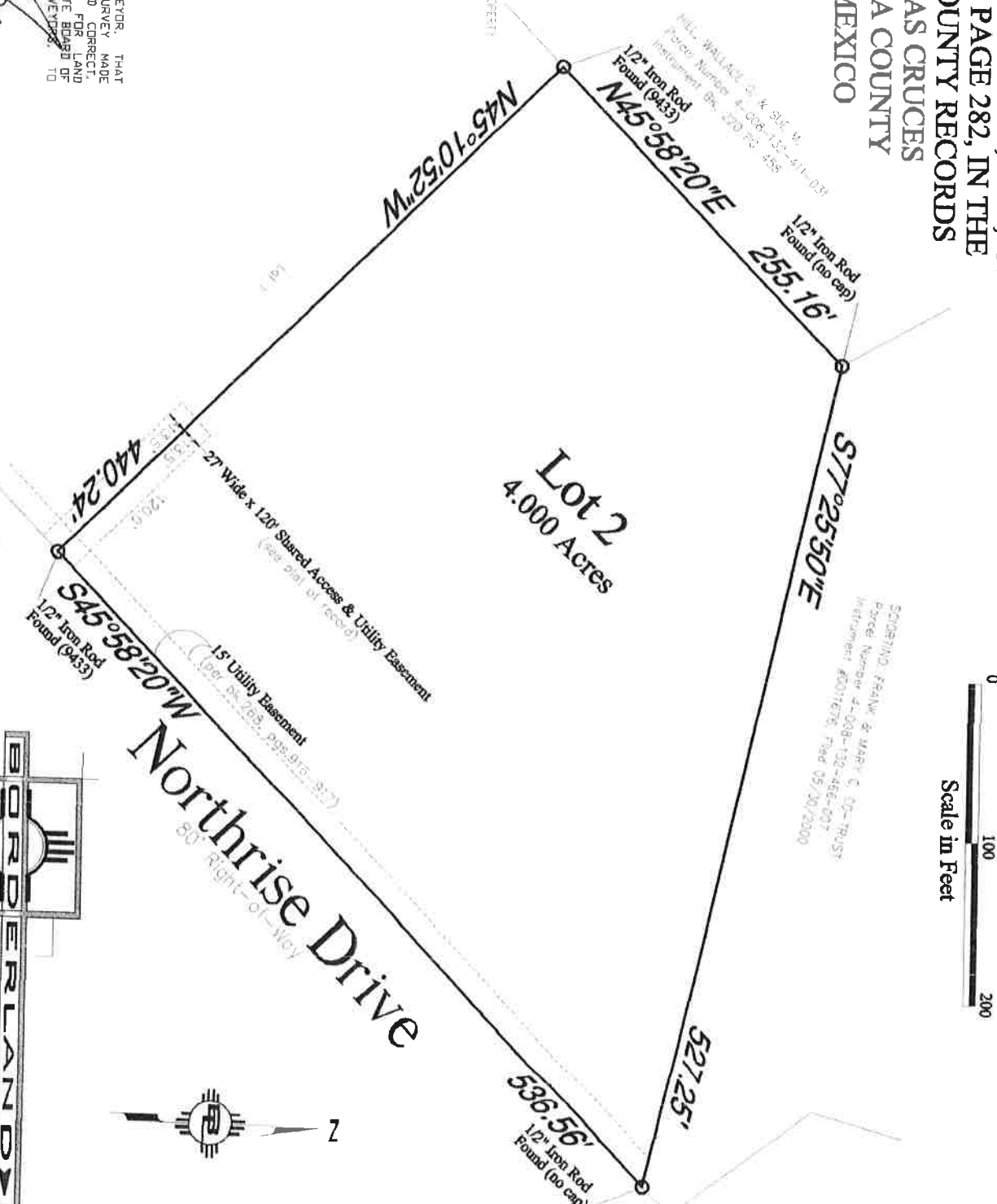
NOTES:
 THE BEARING OR BEARING IS THE SOUTH BOUNDARY
 THE BEARINGS SHOWN HEREON ARE FOR THE FIELD INSTRUMENT PLAT
 AS NOTED HEREON.
 BEARINGS AND DISTANCES MATCH THAT OF RECORD, UNLESS
 OTHERWISE NOTED.
 1/2" IRON RODS WITH YELLOW PLASTIC CAP LABELED MAPS 9433 SET AT CORNER
 CORNERS OR AS NOTED HEREON.

PROPERTY IS IN AN "X" DESIGNATED ZONE;
 IS SHOWN ON THE FLOOD INSURANCE RATE MAP
 COMMUNITY PANEL NO. 35035C1082 G
 EFFECTIVE JULY 6, 2016



SURVEYOR'S CERTIFICATE
 THIS IS TO CERTIFY THAT I AM A REGISTERED LAND SURVEYOR, THAT
 THIS PLAT WAS PREPARED FROM FIELD NOTES OF AN ACTUAL SURVEY MADE
 BY ME OR UNDER MY DIRECTION AND THAT IT IS TRUE AND CORRECT
 MEETING THE MINIMUM REQUIREMENTS OF THE STANDARDS FOR LAND
 SURVEYS IN NEW MEXICO AS ADOPTED BY THE NEW MEXICO STATE BOARD OF
 REGISTRATION FOR PROFESSIONAL ENGINEERS AND LAND SURVEYORS, TO
 THE BEST OF MY KNOWLEDGE AND BELIEF.

DATE: **January 4, 2018**
 TED G. SCANLON - PS NO. 9433
 2990 N. MAIN STREET, STE. 3C LAS CRUCES, NEW MEXICO 88001



ERLANDS
ENGINEERS AND SURVEYORS LLC
 2990 N. MAIN STREET, STE. 3C
 Las Cruces, New Mexico 88001
 Phone: (575) 522-1443
 Fax: (575) 522-9958