

Class A Medical/Office Space

FOR LEASE

1920 Westside Blvd Ste B



Lease Rate: \$25/sf, NNN
Suite B: +/- 1,504 sf
Parking: 4.87 per 1000 sf
Zoning: Special Use C-1 -
Office Development

PROPERTY HIGHLIGHTS

- Equipped with security cameras, an advanced alarm system, and security doors, ensuring peace of mind for your business operations.
- Enjoy high-speed connectivity with CAT 5 Ethernet wiring throughout the space.
- Benefit from a robust 250 amp Phase 3 power supply, along with standard 120v outlets to support all your electrical needs.
- Located within the Petroglyph Medical Plaza.
- +/- 30,900 CPD on Unser & Westside.

Ken Romero
505.610.5616
ken@nvreg.com

Amar Tesch II
505.900.7203
atesch@nvreg.com



NVREG.COM
505.615.6859



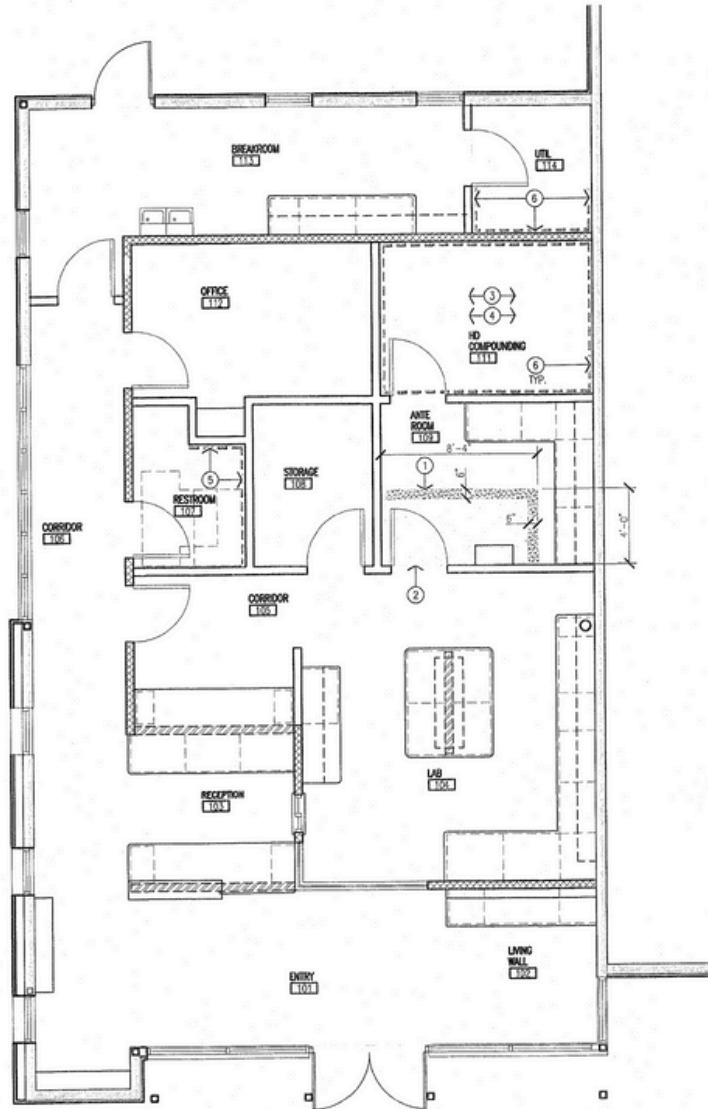
1920 Westside Blvd FOR LEASE



THE INFORMATION CONTAINED IS BELIEVED RELIABLE. WHILE WE DO NOT DOUBT THE ACCURACY, WE HAVE NOT VERIFIED IT AND MAKE NO GUARANTEE, WARRANTY OR REPRESENTATION ABOUT IT. IT IS YOUR RESPONSIBILITY TO INDEPENDENTLY CONFIRM ITS ACCURACY.

1920 Westside Blvd

FOR LEASE



THE INFORMATION CONTAINED IS BELIEVED RELIABLE. WHILE WE DO NOT DOUBT THE ACCURACY, WE HAVE NOT VERIFIED IT AND MAKE NO GUARANTEE, WARRANTY OR REPRESENTATION ABOUT IT. IT IS YOUR RESPONSIBILITY TO INDEPENDENTLY CONFIRM ITS ACCURACY.

1920 Westside Blvd FOR LEASE



NVREG.COM

505.615.6859



JOSEPH MAEZ

505.633.3335

joseph@nvreg.com

AMAR TESCH II

505.900.7203

atesch@nvreg.com

THE INFORMATION CONTAINED IS BELIEVED RELIABLE. WHILE WE DO NOT DOUBT THE ACCURACY, WE HAVE NOT VERIFIED IT AND MAKE NO GUARANTEE, WARRANTY OR REPRESENTATION ABOUT IT. IT IS YOUR RESPONSIBILITY TO INDEPENDENTLY CONFIRM ITS ACCURACY.