

The Colliers logo is located in the top right corner of the image. It consists of the word "Colliers" in a white serif font, set against a dark blue rectangular background with a thin yellow and red horizontal stripe at the bottom.

Colliers

A large blue rectangular overlay with the text "For Lease" in white serif font, positioned on the left side of the image.

For Lease

A white rectangular overlay with the address "10200 Comanche Rd NE" and "Albuquerque, NM 87111" in blue sans-serif font, positioned on the left side of the image.

10200 Comanche Rd NE  
Albuquerque, NM 87111

**John Ransom, CCIM, SIOR**

SR VP | Principal  
+1 505 880 7011  
john.ransom@colliers.com  
Lic. No. 11451

**Tim With, CCIM, SIOR**

SR VP | Principal  
+1 505 880 7092  
tim.with@colliers.com  
Lic. No. 36272

Colliers | New Mexico-El Paso  
5051 Journal Center Blvd. NE, Suite 200  
Albuquerque, NM 87109  
Main: +1 505 883 7676  
colliers.com



10200 Comanche Rd NE | For Lease

# Property Profile

## Details

Lease Rate	\$2,300 /month
Lease Type	Modified Gross (G, E, + Janitorial)
Space Available	± 1,400 SF
Lot Size	0.22 Acres
Submarket	Northeast Heights
Zoning	MX-L (Mixed-Use - Low Intensity)

## Features

- Free standing building
- Previously used as a CPA office
- Private offices, conference room, full kitchen, RR with shower
- Natural light, sky lights
- Private parking
- Landlord is adjacent property owner and will retain garage for equipment storage

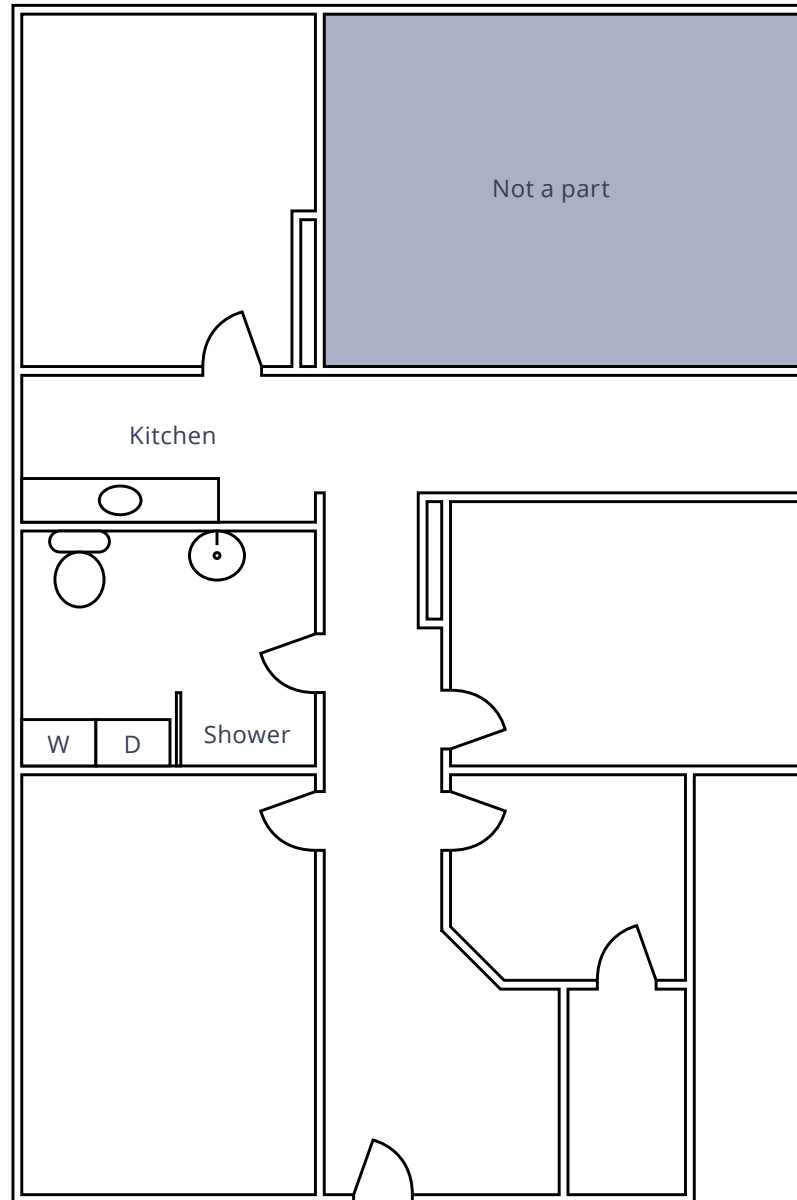


10200 Comanche Rd NE | For Lease

# Property Gallery



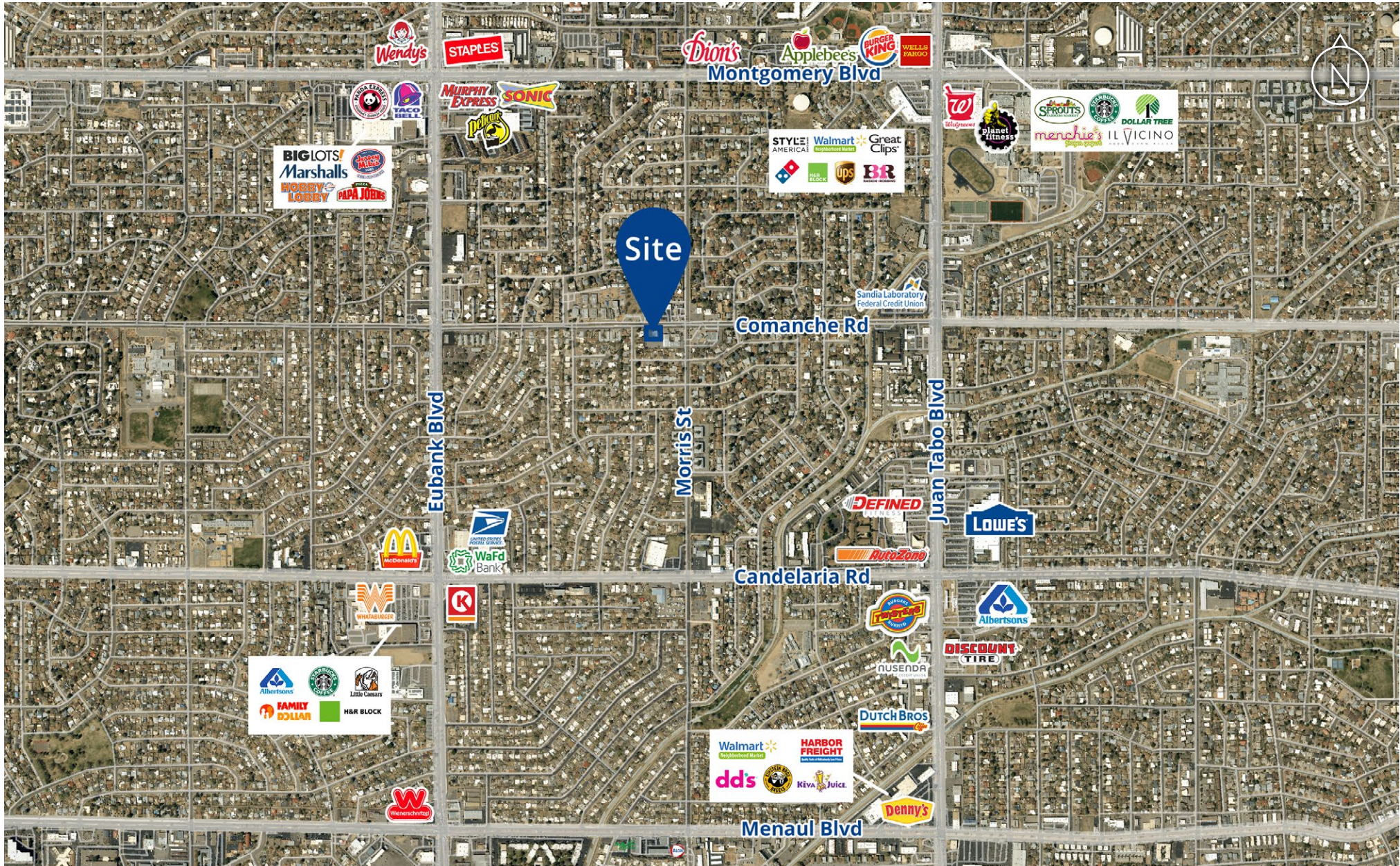
# Floor Plan





10200 Comanche Rd NE | For Lease

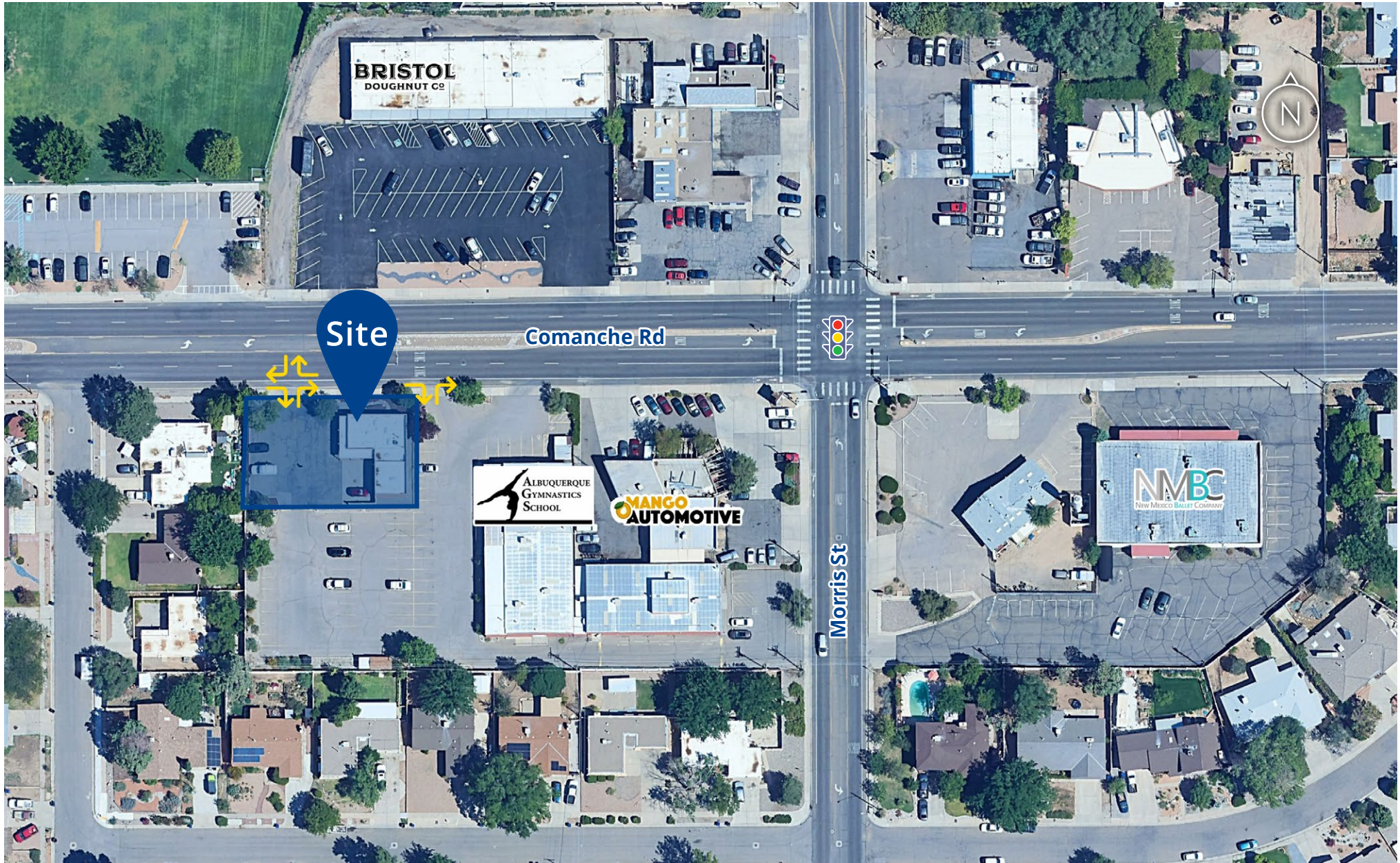
# Trade Area Aerial





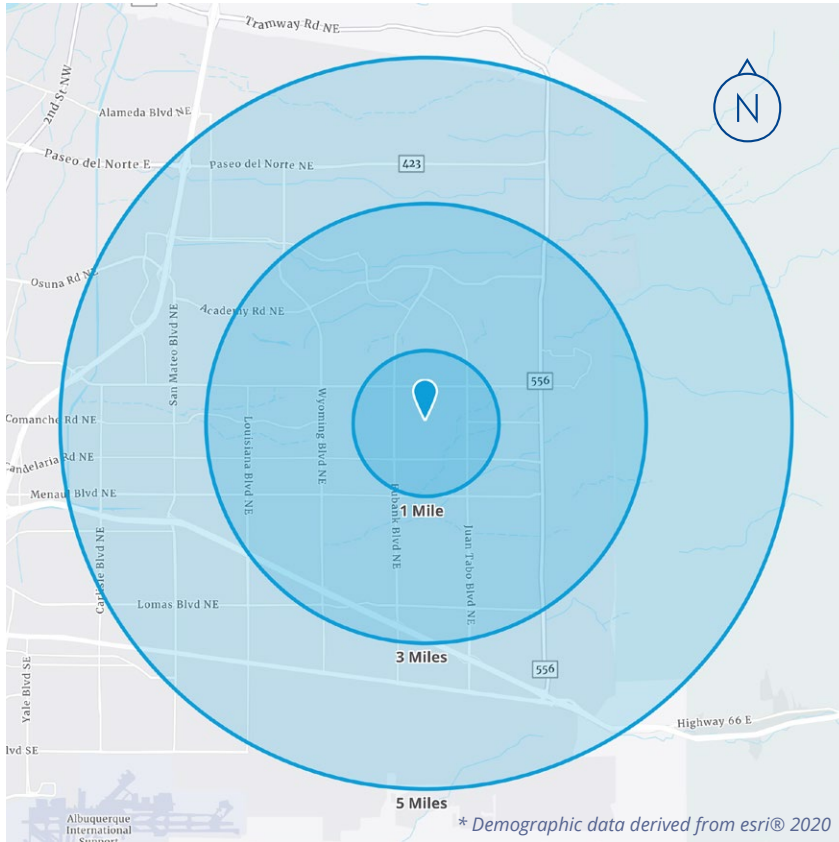
10200 Comanche Rd NE | For Lease

# Intersection Aerial





# Demographics\*



\* Demographic data derived from esri® 2020

	1 MILE	3 MILES	5 MILES
Population	17,571	123,607	270,478
Households	8,428	57,322	121,953
Median Age	42.8	43.8	42.0
Average HH Income	\$91,834	\$107,747	\$100,462
Per Capita Income	\$43,804	\$49,775	\$45,361
Daytime Population	16,469	112,725	292,171
College Education	59.2%	61.6%	56.1%