

JORNADA SOUTH, UNIT V, REPLAT NO. 5

BEING A REPLAT OF TRACTS 2-A2 AND 3-A OF THE JORNADA SOUTH UNIT V, REPLAT NO. 4 AS FILED ON JUNE 1, 2001  
IN PLAT BOOK 19, PAGES 650-651, WITHIN THE CITY OF LAS CRUCES, DONA ANA COUNTY, NEW MEXICO

DATE OF SURVEY: JUNE 1, 2007  
DATE OF PLAT PREPARATION: JUNE 26, 2007

DEDICATION

The 10.15± acre tract of land shown hereon is to be known as

JORNADA SOUTH, UNIT V, REPLAT NO. 5

ALL RIGHTS OF WAY AND PUBLIC AREAS SHOWN HEREON ARE DEDICATED TO THE CITY OF LAS CRUCES. UTILITY EASEMENTS ARE GRANTED FOR THE USE OF THE UTILITY COMPANIES THAT ARE GRANTED TO THIS PLAT AND TO THE CITY OF LAS CRUCES. ALL RULES AND REGULATIONS OF THE CITY OF LAS CRUCES, SAID CITY, AND APPLICATIONS AND ORDINANCES OF THE CITY OF LAS CRUCES, HEREON ARE GRANTED FOR THE USE AND ENJOYMENT OF THE CITY OF LAS CRUCES. NO ENCROACHMENT THAT WILL INTERFERE WITH THE USE OF EASEMENTS AS SHOWN ON THIS PLAT IS ALLOWED.

THIS SUBDIVISION HAS BEEN DEDICATED IN ACCORDANCE WITH THE WISHES OF THE UNDERSIGNED OWNERS OF THE LAND SHOWN HEREON.

The instruments of title are recorded at:  
WY BOOK 711, PAGES 916-917, FILED 5/16/2006, DONA ANA COUNTY RECORDS

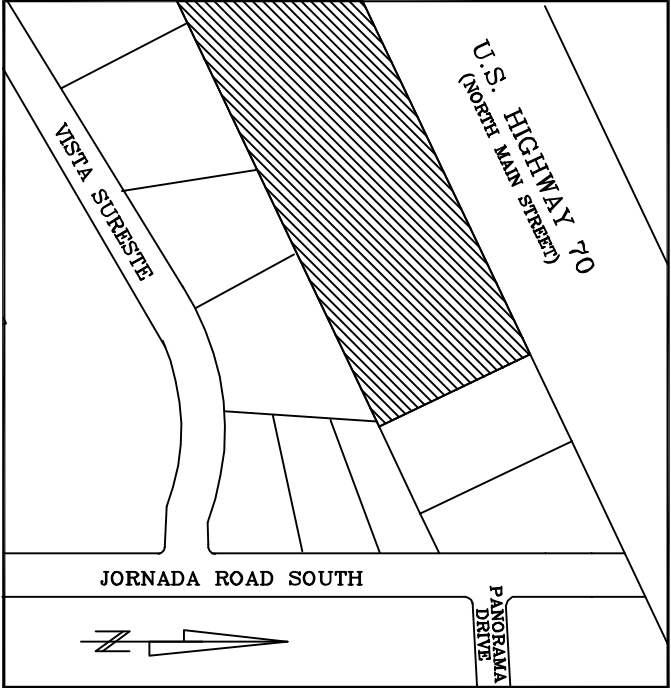
STATEMENT OF OWNERSHIP

I HEREBY ACKNOWLEDGE AND CERTIFY THAT I AM THE PROPERTY OWNER OF THE PROPERTY REPRESENTED BY THIS PLAT.

MICHAEL LUDAMAN, MANAGER  
MOUNTAIN VIEW STORAGE, LLC  
4400 BATAN MEMORIAL E. HWY 70  
LAS CRUCES, NM 88012  
STATE OF NEW MEXICO  
COUNTY OF \_\_\_\_\_  
THE FOREGOING INSTRUMENT WAS ACKNOWLEDGED BEFORE ME BY:  
THIS \_\_\_\_\_ DAY OF \_\_\_\_\_ 20\_\_\_\_  
MY COMMISSION EXPIRES: \_\_\_\_\_

NOTARY PUBLIC (SEAL)

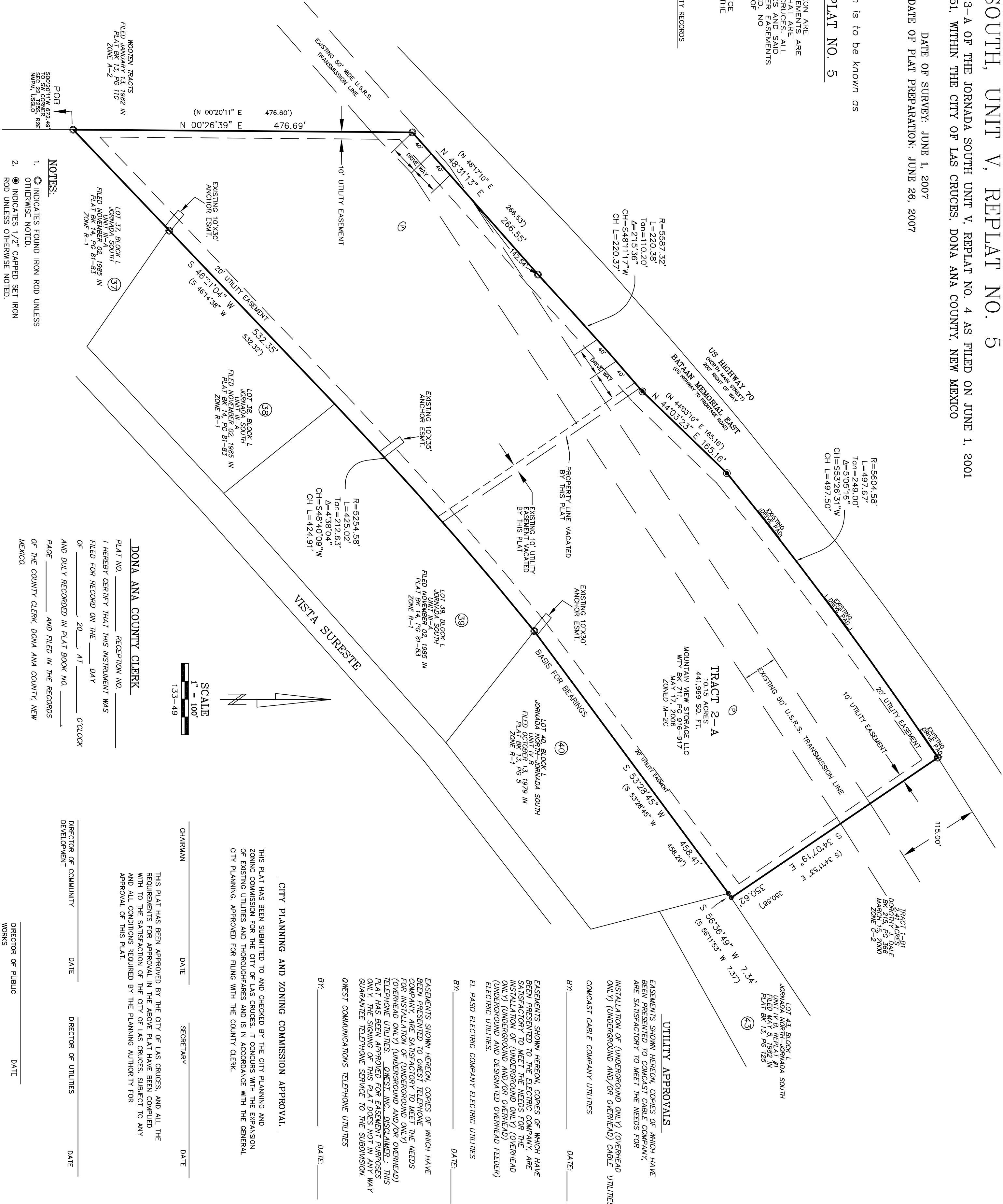
VICINITY MAP



I CERTIFY, AS A LICENSED SURVEYOR IN THE STATE OF NEW MEXICO, THAT THIS SURVEY MEETS OR EXCEEDS THE REQUIREMENTS FOR LAND SURVEYS IN NEW MEXICO.

GERALD K. DONOHUE

PLS 8172



NOTES:

1. INDICATES FOUND IRON ROD UNLESS OTHERWISE NOTED.
2. INDICATES 1/2" CAPPED SET IRON ROD UNLESS OTHERWISE NOTED.
3. EXCESS STORM DRAINAGE WILL BE RETAINED ON EACH LOT. LOT OWNERS ARE RESPONSIBLE FOR POND MAINTENANCE.
4. THE DEVELOPER IS RESPONSIBLE FOR EASEMENTS, MAIN LINE EXTENSIONS, PAYMENT CUTS WILL REQUIRE PUBLIC WORKS APPROVAL.
5. RECORD BEARINGS AND DISTANCES ARE IN PARENTHESES.

DONA ANA COUNTY CLERK

PLAT NO. \_\_\_\_\_ RECEPTION NO. \_\_\_\_\_  
I HEREBY CERTIFY THAT THIS INSTRUMENT WAS  
FILED FOR RECORD ON THE \_\_\_\_\_ DAY  
OF \_\_\_\_\_ 20\_\_\_\_ AT \_\_\_\_\_ O'CLOCK  
AND DULY RECORDED IN PLAT BOOK NO. \_\_\_\_\_  
PAGE \_\_\_\_\_ AND FILED IN THE RECORDS  
OF THE COUNTY CLERK, DONA ANA COUNTY, NEW  
MEXICO.

COUNTY CLERK \_\_\_\_\_

DEPUTY COUNTY CLERK \_\_\_\_\_

CITY PLANNING AND ZONING COMMISSION APPROVAL

THIS PLAT HAS BEEN SUBMITTED TO AND CHECKED BY THE CITY PLANNING AND ZONING COMMISSION FOR THE CITY OF LAS CRUCES. IT CONCURS WITH THE EXPANSION OF EXISTING UTILITIES AND THOROUGHFARES AND IS IN ACCORDANCE WITH THE GENERAL CITY PLANNING. APPROVED FOR FILING WITH THE COUNTY CLERK.

BY: \_\_\_\_\_ DATE: \_\_\_\_\_

BY: \_\_\_\_\_ DATE: \_\_\_\_\_

COMCAST CABLE COMPANY UTILITIES

BY: \_\_\_\_\_ DATE: \_\_\_\_\_

UTILITY APPROVALS

EASEMENTS SHOWN HEREON, COPIES OF WHICH HAVE BEEN PRESENTED TO COMCAST CABLE COMPANY, ARE SATISFACTORY TO MEET THE NEEDS FOR

INSTALLATION OF (UNDERGROUND ONLY) (OVERHEAD ONLY) (UNDERGROUND AND/OR OVERHEAD) CABLE UTILITIES.

EASEMENTS SHOWN HEREON, COPIES OF WHICH HAVE BEEN PRESENTED TO THE ELECTRIC COMPANY, ARE SATISFACTORY TO MEET THE NEEDS FOR THE INSTALLATION OF (UNDERGROUND ONLY) (OVERHEAD ONLY) (UNDERGROUND AND/OR OVERHEAD) (UNDERGROUND AND DESIGNATED OVERHEAD FEEDER) ELECTRIC UTILITIES.

EL PASO ELECTRIC COMPANY ELECTRIC UTILITIES

BY: \_\_\_\_\_ DATE: \_\_\_\_\_

QWEST COMMUNICATIONS TELEPHONE UTILITIES

EASEMENTS SHOWN HEREON, COPIES OF WHICH HAVE BEEN PRESENTED TO QWEST TELEPHONE COMPANY, ARE SATISFACTORY TO MEET THE NEEDS FOR INSTALLATION OF (UNDERGROUND ONLY) (OVERHEAD ONLY) (UNDERGROUND AND/OR OVERHEAD) TELEPHONE UTILITIES. QWEST, INC., DISCLAIMER: THIS PLAT HAS BEEN APPROVED FOR EASEMENT PURPOSES ONLY. THE SIGNING OF THIS PLAT DOES NOT IN ANY WAY GUARANTEE TELEPHONE SERVICE TO THE SUBDIVISION.

CHAIRMAN \_\_\_\_\_ DATE \_\_\_\_\_ SECRETARY \_\_\_\_\_ DATE \_\_\_\_\_

DIRECTOR OF COMMUNITY DEVELOPMENT \_\_\_\_\_ DATE \_\_\_\_\_ DIRECTOR OF UTILITIES \_\_\_\_\_ DATE \_\_\_\_\_

DIRECTOR OF PUBLIC WORKS \_\_\_\_\_ DATE \_\_\_\_\_

Donohue Land Surveys  
3010 Bowman Avenue  
P.O. Box 40  
Mesilla Park, NM 88047  
1-505-523-1114