

FOR SALE OR LEASE

(SEE BROKER FOR PRICING)

AVAILABLE:

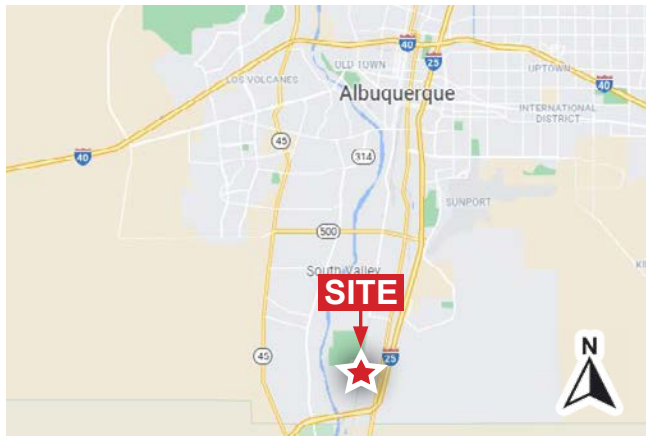
| | |
|-------------------------|--------------------------|
| Land: | ±33 Acres over 9 parcels |
| Lot 1 (For Lease Only) | ±4.346 Ac. |
| Warehouse/Office Space: | ±19,414 SF |
| Lot 2 | ±2.409 Ac. |
| Lot 3 | ±2 Ac. |
| Lot 4 | ±2 Ac. |
| Lot 5 | ±2.25 Ac. |
| Lot 1b | ±9.516 Ac. |
| Lot 2b | ±4.0 Ac. |
| Lot 3b | ±4.265 Ac. |
| Lot 4b | ±4.278 Ac. |

ZONING:

M-1 Bernalillo County

PROPERTY DETAILS:

- ▲ Existing buildings on Lot 1.
- ▲ Proposed buildings on remaining Lots.



9 LOTS FOR INDUSTRIAL DEVELOPMENT

LOT 1 INCLUDES WAREHOUSE/OFFICE/OUTBUILDINGS

8000 Broadway Blvd. SE | Albuquerque, NM 87105



400 RIO GRANDE BLVD. NW | ALBUQUERQUE, NM 87104

JAMES JARAMILLO, OWNER/BROKER
505.480.1602 | 505.730.2170
COBA1@ME.COM

FOR SALE OR LEASE

(SEE BROKER FOR PRICING)

9 LOTS FOR INDUSTRIAL DEVELOPMENT LOT 1 INCLUDES WAREHOUSE/OFFICE/OUTBUILDINGS

8000 Broadway Blvd. SE | Albuquerque, NM 87105



High-Altitude Aerial



COBA INVESTMENT COMPANY

400 RIO GRANDE BLVD. NW | ALBUQUERQUE, NM 87104

JAMES JARAMILLO, OWNER/BROKER

505.480.1602 | 505.730.2170

COBA1@ME.COM

The information presented in this flyer is believed to be reliable. We have not verified it and make no guarantee, warranty or representation about it. It is the investigating party's responsibility to conduct a careful independent investigation of the property and have it evaluated by tax, financial, and legal counsel to determine that it is suitable to their needs.

(SEE BROKER FOR PRICING)

8000 Broadway Blvd. SE | Albuquerque, NM 87105



400 RIO GRANDE BLVD. NW | ALBUQUERQUE, NM 87104

505.480.1602 | 505.730.2170

COBA1@ME.COM

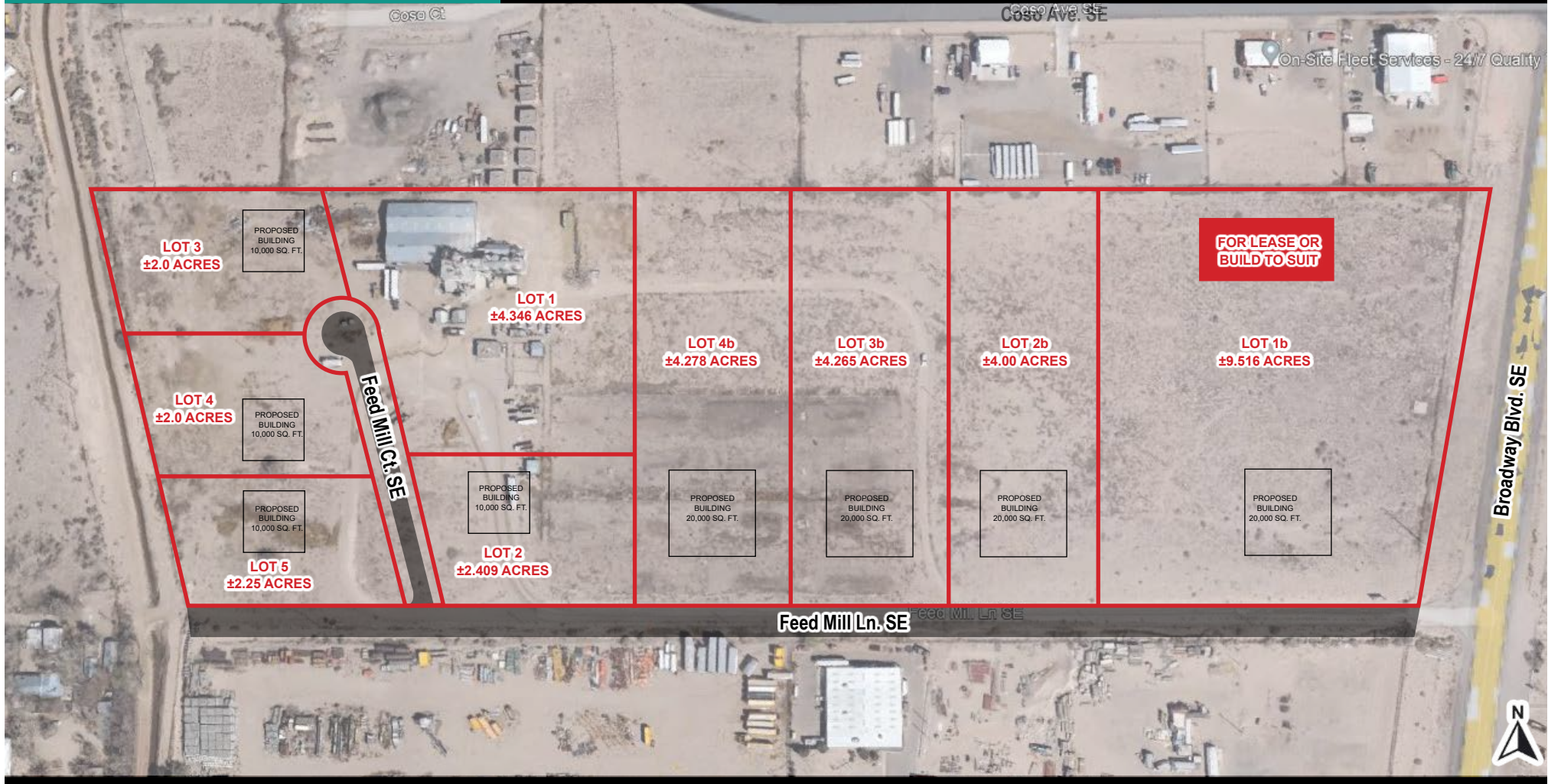
The information presented in this flyer is believed to be reliable. We have not verified it and make no guarantee, warranty or representation about it. It is the investigating party's responsibility to conduct a careful independent investigation of the property and have it evaluated by tax, financial, and legal counsel to determine that it is suitable to their needs.

FOR SALE OR LEASE

(SEE BROKER FOR PRICING)

9 LOTS FOR INDUSTRIAL DEVELOPMENT LOT 1 INCLUDES WAREHOUSE/OFFICE/OUTBUILDINGS

8000 Broadway Blvd. SE | Albuquerque, NM 87105



Low-Altitude Aerial

 **COBA** INVESTMENT COMPANY
400 RIO GRANDE BLVD. NW | ALBUQUERQUE, NM 87104

JAMES JARAMILLO, OWNER/BROKER
505.480.1602 | 505.730.2170
COBA1@ME.COM

The information presented in this flyer is believed to be reliable. We have not verified it and make no guarantee, warranty or representation about it. It is the investigating party's responsibility to conduct a careful independent investigation of the property and have it evaluated by tax, financial, and legal counsel to determine that it is suitable to their needs.

FOR SALE OR LEASE

(SEE BROKER FOR PRICING)

9 LOTS FOR INDUSTRIAL DEVELOPMENT LOT 1 INCLUDES WAREHOUSE/OFFICE/OUTBUILDINGS

8000 Broadway Blvd. SE | Albuquerque, NM 87105



 **COBA** INVESTMENT COMPANY
400 RIO GRANDE BLVD. NW | ALBUQUERQUE, NM

JAMES JARAMILLO, OWNER/BROKER
505.480.1602 | 505.730.2170
COBA1@ME.COM

The information presented in this flyer is believed to be reliable. We have not verified it and make no guarantee, warranty or representation about it. It is the investigating party's responsibility to conduct a careful independent investigation of the property and have it evaluated by tax, financial, and legal counsel to determine that it is suitable to their needs.

FOR SALE OR LEASE

(SEE BROKER FOR PRICING)

9 LOTS FOR INDUSTRIAL DEVELOPMENT LOT 1 INCLUDES WAREHOUSE/OFFICE/OUTBUILDINGS

8000 Broadway Blvd. SE | Albuquerque, NM 87105



 **COBA** INVESTMENT COMPANY
400 RIO GRANDE BLVD. NW | ALBUQUERQUE, NM

JAMES JARAMILLO, OWNER/BROKER
505.480.1602 | 505.730.2170
COBA1@ME.COM

The information presented in this flyer is believed to be reliable. We have not verified it and make no guarantee, warranty or representation about it. It is the investigating party's responsibility to conduct a careful independent investigation of the property and have it evaluated by tax, financial, and legal counsel to determine that it is suitable to their needs.