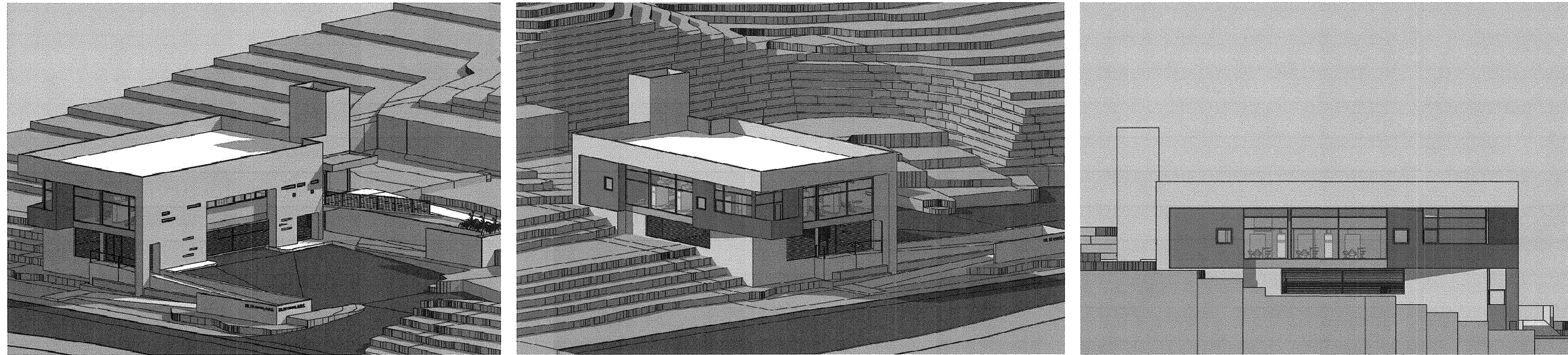


DR CHANG DENTAL OFFICE
LAS CRUCES, NEW MEXICO
SSWA PROJECT. NO. 0827
09-17-2010



CONTACT INFORMATION:

OWNER:

PC PROPERTIES, LLC/THE DENTAL EXPERTS, LLC
6800 Vista Del Norte Dr. NE, Unit #1526
Albuquerque, NM 87113
Ph (505) 980-3107
Email: drpechang@gmail.com
Contact: Dr. Pe Chang

ARCHITECT:

STUDIO SOUTHWEST ARCHITECTS, INC.
2101 Mountain Road NW
Albuquerque, NM 87104
Ph 505.843.9639
Fx 505.843.9683
rheiser@studioswarch.com
Contact: Robert Heiser AIA, Principal Architect
Contact: Saige Cox, Project Manager

CIVIL ENGINEER:

SUMMIT ENGINEERING, LLC
PO Box 375
Fairacres, NM 88033
Ph 575.527.5321
Fx 575.527.1161
Contact: Greg D. Byres, P.E.

STRUCTURAL ENGINEER:

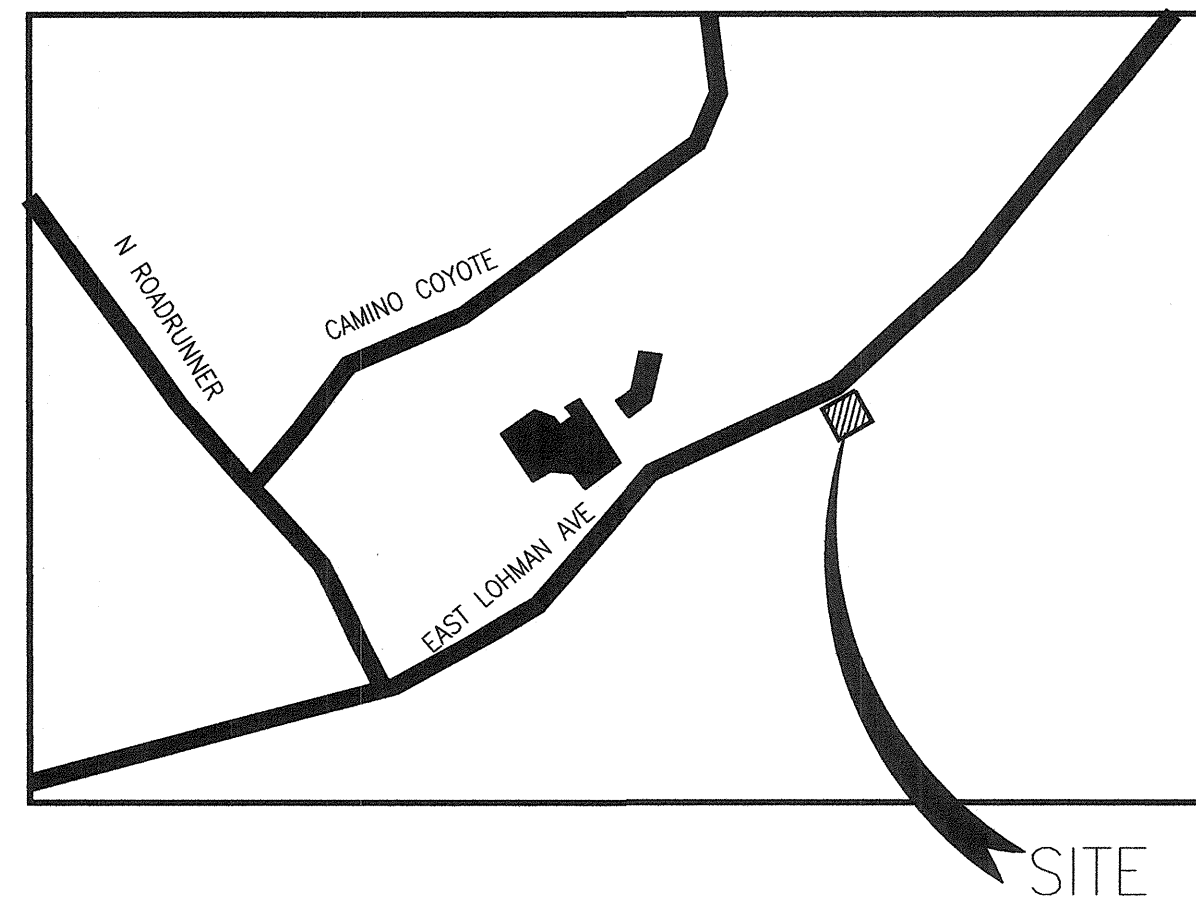
WALLA ENGINEERING, LTD.
6100 Indian School Rd. NE
Suite #105
Albuquerque, NM 87110
Ph 505.881.3008
Fx 505.881.4025
Contact: Mike Walla, P.E.

MECHANICAL ENGINEER:

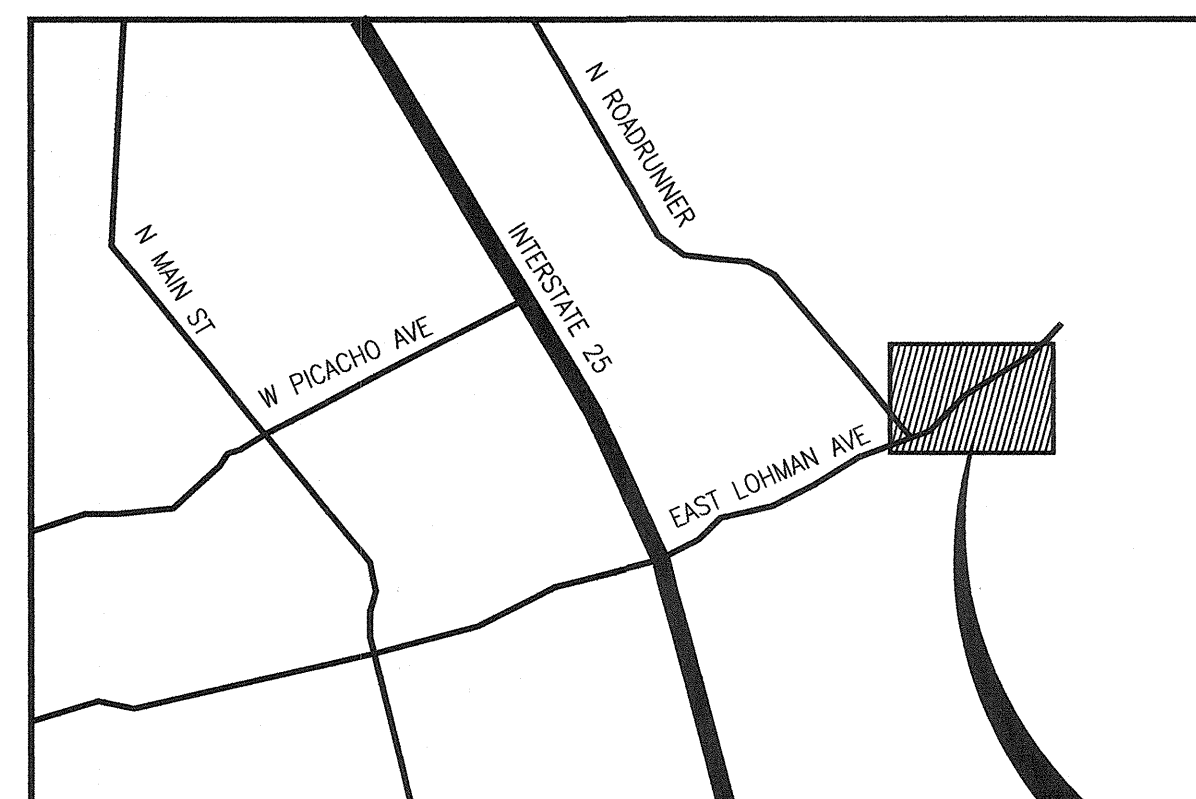
ENGINEERING SOLUTIONS
447 Spanish Trail
Las Cruces, NM 88001
575.640.3790
575.527.0644
Contact: David B. Church, P.E.

ELECTRICAL ENGINEER:

ENGINEERING
Las Cruces, NM
Ph 575.522.0988
Fx 575.
Contact: Jim Tester, P.E.



VICINITY MAP
N.T.S.



LOCATION MAP
N.T.S.

CODE ANALYSIS FOR DR CHANG DENTAL OFFICE			9/08/2009
Occupancy Classification:	Business Group B		
Construction Type:	IIB		
Allowable Stories:	3		
Actual Stories:	3		
Allowable Area:	9,000 S.F.		
Actual Area:	3,654 S.F. (No occupied space)		
First Floor / Parking:	3,830 S.F.		
Second Floor / Office:	7,484 S.F.		
Total Area:	3,830 S.F.		
Total Occupant Area:	40'-0"		
Allowable Height:	28'-6"		
Actual Height:	1-hr if fully sprinklered		
Floor/Ceiling Fire Separation:	Group B and Group S2:		
Mixed Occupancy:	(Table 1004.1.1)		
Occupant Load	100 S.F. / Person		
Floor area per occupant:	39		
Total Occupant Load:			
Means of Egress			
Travel Distance	300 feet maximum		
B occupancy with sprinklers:	Not required with sprinkler system		
Corridor Fire Resistance Rating:	1		
Number of Exits Required:	2		
Number of Exits Provided:	(as modified by Table 1019.2)		
Total Egress Width Required:	.15" x 39 = 5.85"		
Actual Egress Width Provided:	67.2" (2 doors @ 33.75" each)		
Minimum Corridor Width:	44"		
Actual Corridor Width:	65" (?)		
No Dead End Corridors			
Plumbing Fixtures			
Total Number of Required Fixtures:	39 occupants; 20 occupants per each sex		
Required Water Closets:	1 per 25 occupants per each sex		
Required Lavatories:	1 per 40 occupants per each sex		
Required Water Fountains:	1 per 100 occupants		
Fixtures Provided	Women	Men	
Water closets	1	1	
Urinals	-	0	
Lavatories	1	1	
Water Fountains	0	1	
Service Sink	1		
Note: The required fixtures are provided as unisex toilets, and one more water closet and one more lavatory are provided for private use by the Doctor.			
Parking 1V-58 Art. IV Sec. 38-33F Service Land Uses			
1 APS/350-450 sq. ft.	1.5-2.5 APS/Workstation	8-12 APS/Doctor	
Total Sq. Ft. = 3,830 S.F./350=11	Total Workstations = 7/1.5=11	Total Doctor = 1/12=12	
12 Auto spaces required	x Auto spaces provided		
1 BPS/8000 sq.ft.	1 BPS/10 Workstation	1 BPS/2 Doctor	
Total Sq. Ft. = 3,830 S.F./8000=1	Total Workstations = 7/10=1 BPS	Total Doctor = 1/2=1	
1 Bicycle spaces required	3 Bicycle spaces provided		

DRAWING INDEX:

GENERAL INFORMATION:

G-001 COVER SHEET, CODE ANALYSIS

CIVIL:

CS-101 GRADING PLAN
CS-102 EROSION CONTROL PLAN
CS-103 DETAIL SHEET
CS-201 UTILITY PLAN

LANDSCAPE:

L1 LANDSCAPING PLAN
L2 IRRIGATION PLAN
L3 DETAILS

STRUCTURAL:

S-100 STRUCTURAL NOTES
S-101 SUB LEVEL FOUNDATION PLAN AND FIRST FLOOR FRAMING PLAN
S-102 ROOF FRAMING PLAN
S-201 FOUNDATION SECTIONS
S-301 FRAMING SECTIONS
S-302 FRAMING SECTIONS & DETAILS
S-401 FRAMING DETAILS
S-402 FRAMING DETAILS
S-RW1 SITE RETAINING WALL PLAN

ARCHITECTURAL:

A-001 STANDARD ARCHITECTURAL ABBREVIATIONS & SYMBOLS
AS-101 SITE PLAN SUB LEVEL
AS-102 SITE PLAN FIRST FLOOR
AS-103 SITE DETAILS
AS-104 SITE DETAILS
A-101 FLOOR PLANS
A-111 REFLECTED CEILING PLANS
A-121 ROOF PLAN
A-201 BUILDING ELEVATIONS
A-301 BUILDING SECTIONS
A-311 WALL SECTIONS
A-312 WALL SECTIONS
A-313 WALL SECTIONS
A-401 ENLARGED PLANS & ELEVATIONS
A-402 ENLARGED PLANS & ELEVATIONS CASEWORK
A-501 WALL TYPES
A-511 MISC. DETAILS
A-601 DOOR SCHEDULE, SIGNAGE, DOOR & FRAME TYPES, WINDOW TYPES
A-602 WINDOW TYPES
A-603 WINDOW & DOOR DETAILS
A-701 FLOOR FINISH PLAN
A-711 EQUIPMENT PLANS

PLUMBING:

P-101 FIRST FLOOR PLUMBING PLAN
P-201 SAS PROFILE AND DETAILS
P-301 FIRST FLOOR MEDICAL GAS PLAN

MECHANICAL:

M-101 FIRST FLOOR HVAC PLAN
M-201 SUB LEVEL HVAC PLAN

ELECTRICAL:

E-101 ELECTRICAL LEGEND, NOTES, DIAGRAMS & SCHEDULES
E-102 POWER PLANS
E-103 LIGHTING PLANS
E-104 ELECTRICAL SITE PLAN

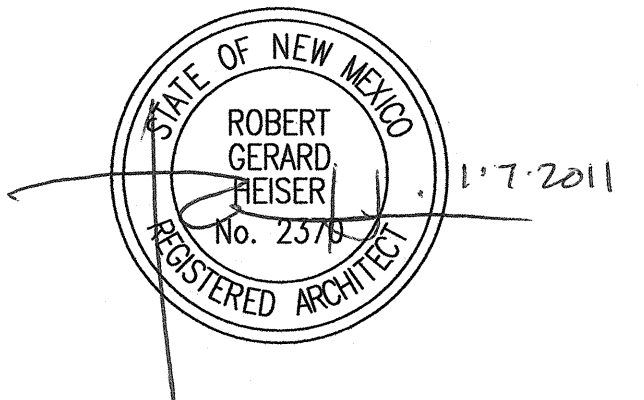
STUDIO
SW
ARCHITECTS

STUDIO SOUTHWEST ARCHITECTS, INC.
2101 Mountain Rd. NW, Albuquerque, NM 87104
505.843.9639 fax 505.843.9683
Web Site: www.studioswarch.com
E-Mail: mail@studioswarch.com

© 2008, Studio Southwest Architects, Inc.
Duplication or reproduction by any means without the express written consent of Studio Southwest Architects, Inc. is a violation of Federal and international law. The information contained on this document is the intellectual property of Studio Southwest, Inc. and all rights thereto are Reserved. For exceptions, refer to the Owner-Architect Agreement.

CONSULTANTS

Architect Engineer



DR. CHANG
DENTAL OFFICE

4420 EAST LOMAN AVENUE
LAS CRUCES, NM

MARK	DATE	DESCRIPTION
△	01/07/2011	V.E. MODIFICATIONS
△	09/15/2010	V.E. MODIFICATIONS
△	04/12/2010	V.E. MODIFICATIONS
△	03/23/2010	V.E. MODIFICATIONS
△	03/08/2010	V.E. MODIFICATIONS
△	11/18/2009	PLAN REVIEW COMMENTS
△	11/09/2009	PLAN REVIEW COMMENTS
ISSUE:	POST PERMIT MARK-UP	
PROJECT NO:	0827	
CAD DWG FILE:	0827 G-001	
DRAWN BY:	TMJ	
CHECKED BY:	RH	
DATE:	01/07/2011	

SHEET TITLE

COVER SHEET &
CODE ANALYSIS

G-001

sheet of sheets