



San Juan Centers

Shopping Center

Farmington, NM

At the Intersection of Main St. & 20th St.



Demographics Farmington Metro Trade Area Available

Population	131,875	355,538	<ul style="list-style-type: none">● 59,388 SF Anchor Opportunity● Available end of Q1 2026● Over 200 feet of frontage● Contact leasing representative for rate
Med. Income	\$63,745	\$40,226	

Please contact us for leasing opportunities

Surroundings Info

- End cap location with excellent visibility and signage potential
- Ideal for large-format retail
- Prominent exposure in one of Farmington's busiest shopping centers
- Adjacent to Major National Retailers -strong co-tenancy drives consistent foot traffic
- Ample Parking with Multiple Access Points- easy ingress/egress from primary thoroughfares
- Flexible Demising Options- landlord open to subdividing to meet tenant size requirements
- Established Trade Area- surrounded by dense residential neighborhoods and nearby schools
- Zoned for Retail Use- supports a wide range of tenant categories
- Landlord Open to Build-to-Suit or Turnkey Delivery based on tenant credit and use



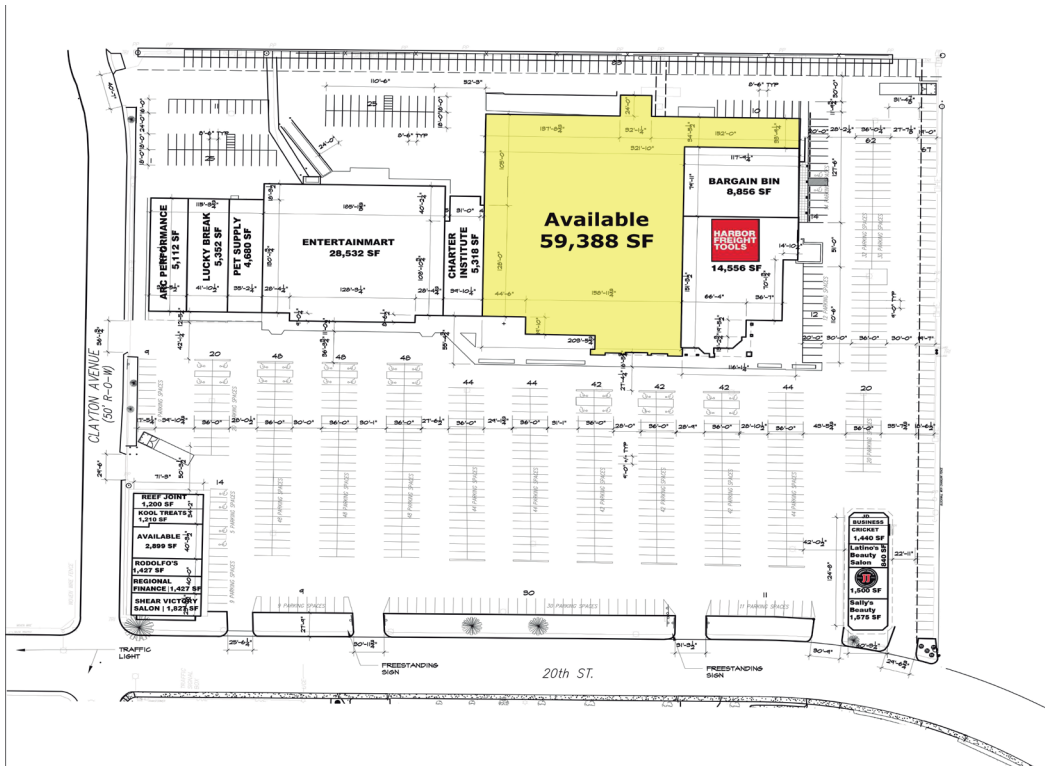
Contact

 Vanessa Valadez
 505.884.3578
 Vanessa@PetersonProperties.net

 PetersonProperties.net
 [/petersonpropertiesllc](https://www.facebook.com/petersonpropertiesllc)
 [/petersonpropertiesllc](https://www.linkedin.com/company/petersonpropertiesllc)
 [/peterson.properties](https://www.instagram.com/peterson.properties)



Site Plan



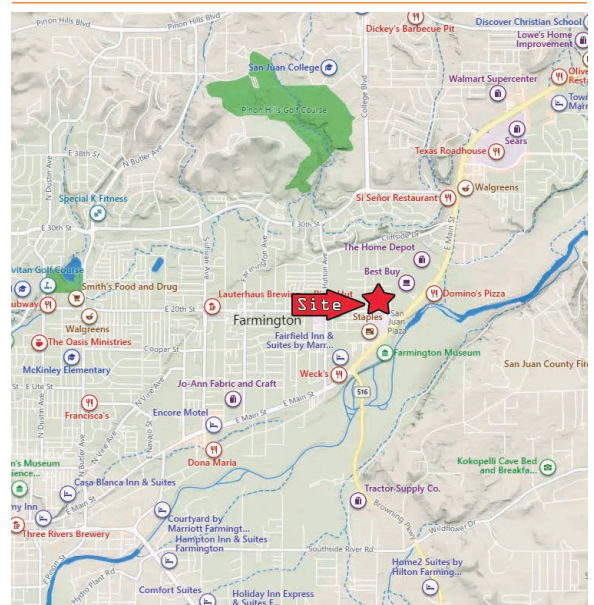
Please contact us for leasing opportunities



Aerial Map



At the intersection of Main St. & 20th St., Farmington, NM



Contact us

Vanessa Valadez

505.884.3578

Vanessa@PetersonProperties.net

