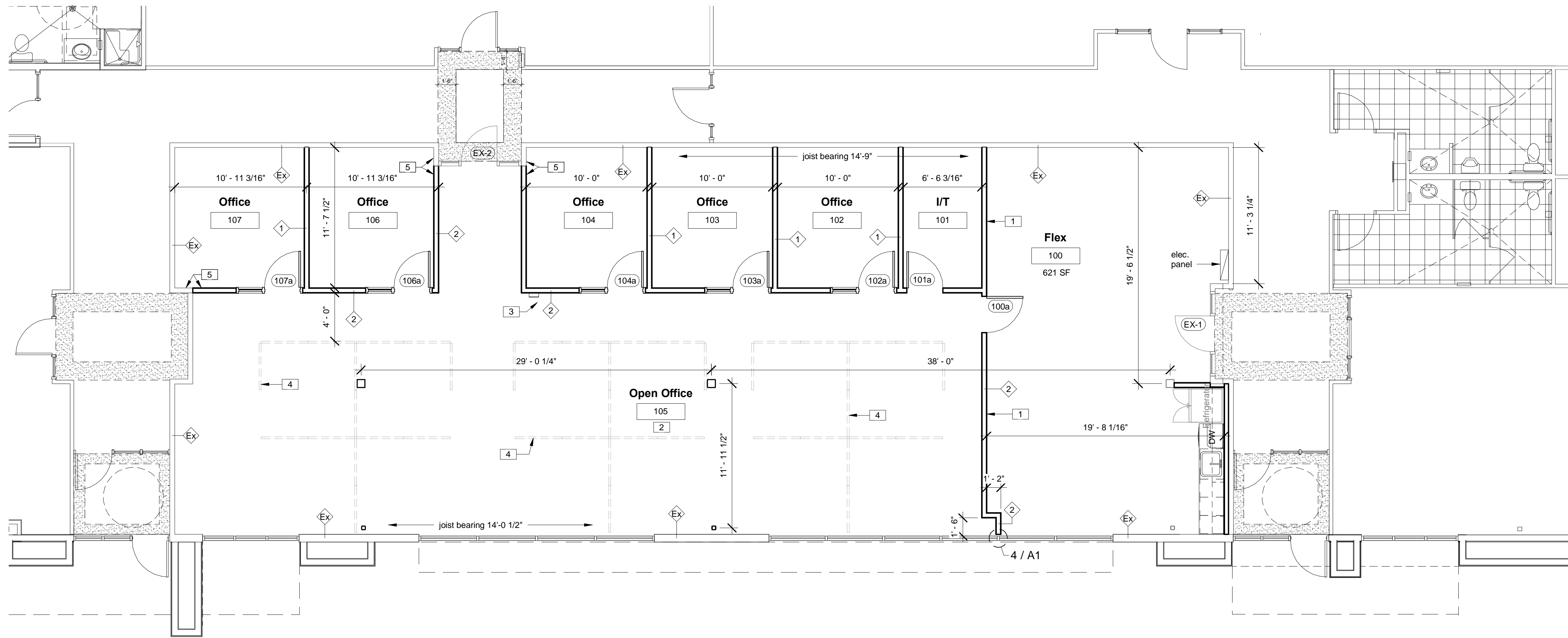
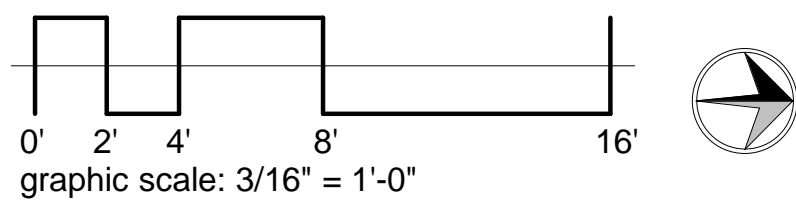


KEYED NOTES: □

- North face of partition shall be two inches (2") south of existing HVAC plenum.
- Paint all exposed bar joists, roof deck, conduits and ductwork. Color per Tenant Improvement Specifications.
- UL Rating 2A:10 B-C fire extinguisher in semi-recessed wall cabinet.
- Modular furniture by tenant.
- Align finish face.



1 Floor Plan
3/16" = 1'-0"



HARDWARE SETS:

HW-1:
3 EA BUTT HINGES
1 EA PASSAGE SET
1 EA WALL STOP

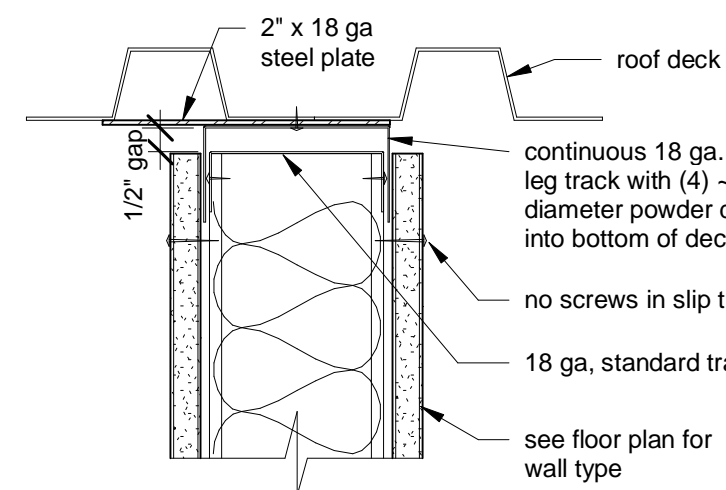
HW-2:
REKEY EXISTING
ENTRY SET TO
GRAND MASTER

HW-3:
3 EA BUTT HINGES
1 EA ENTRY SET
1 EA WALL STOP

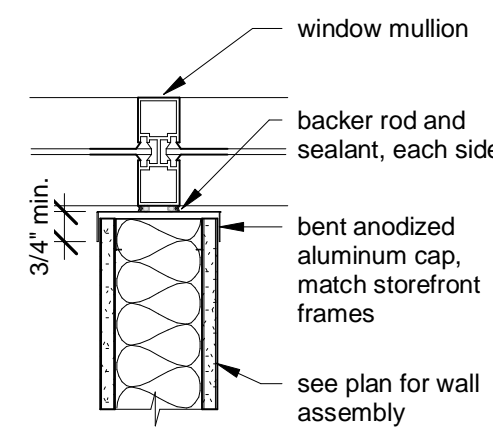
Door Schedule							
Mark	Width	Height	Thick	Door Type	Frame Type	Hardware Set	Remarks
100a	3'-0"	7'-0"	1 3/4"	SC-1	KD-A	HW-1	
101a	3'-0"	7'-0"	1 3/4"	SC-1	KD-A	HW-3	
102a	3'-0"	7'-0"	1 3/4"	SC-1	KD-E	HW-1	
103a	3'-0"	7'-0"	1 3/4"	SC-1	KD-E	HW-1	
104a	3'-0"	7'-0"	1 3/4"	SC-1	KD-E	HW-1	
106a	3'-0"	7'-0"	1 3/4"	SC-1	KD-E	HW-1	
107a	3'-0"	7'-0"	1 3/4"	SC-1	KD-E	HW-1	
EX-1	3'-0"	7'-0"		Existing	Existing	HW-2	Confirm mortise with existing frame
EX-2	3'-0"	7'-0"		Existing	Existing	HW-2	

Room Schedule						
Name	Rm. No.	Floor Finish	Wall Finish	Ceiling Finish	Ceiling Height	Remarks
Flex	100	CPT	P-1	ACT	9'-10"	
I/T	101	Existing CPT	P-1	ACT	9'-10"	Existing carpet to remain
Office	102	Existing CPT	P-1	ACT	9'-10"	Existing carpet to remain
Office	103	Existing CPT	P-1	ACT	9'-10"	Existing carpet to remain
Office	104	Existing CPT	P-1	ACT	9'-10"	Existing carpet to remain
Open Office	105	Existing CPT	P-1	Exposed	Exposed	Existing carpet to remain
Office	106	Existing CPT	P-1	ACT	9'-10"	Existing carpet to remain
Office	107	Existing CPT	P-1	ACT	9'-10"	Existing carpet to remain

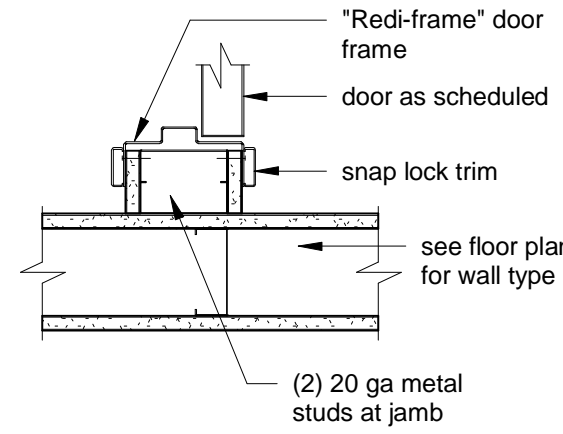
CPT: Carpet
P1: Painted
ACT: Acoustical lay-in ceiling tile



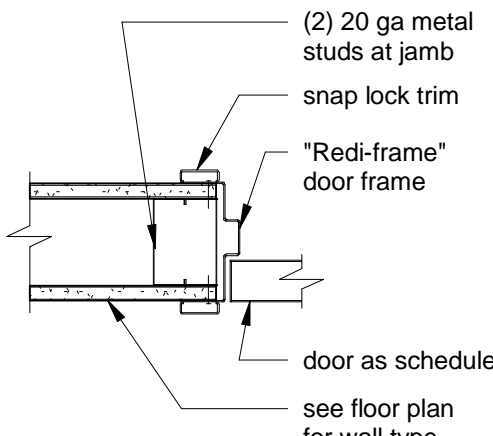
7 Drywall at Deck
3" = 1'-0"



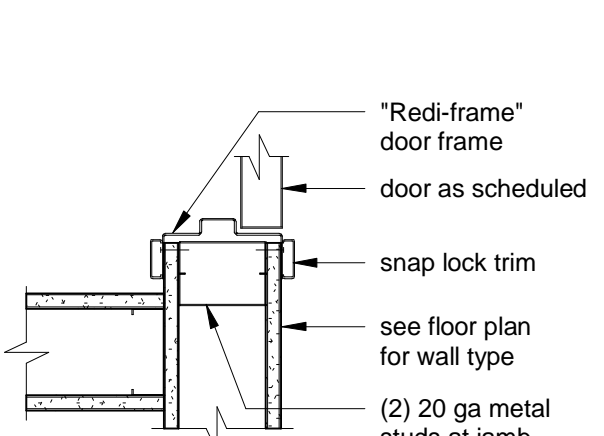
4 Window Mullion Wall Junction
1 1/2" = 1'-0"



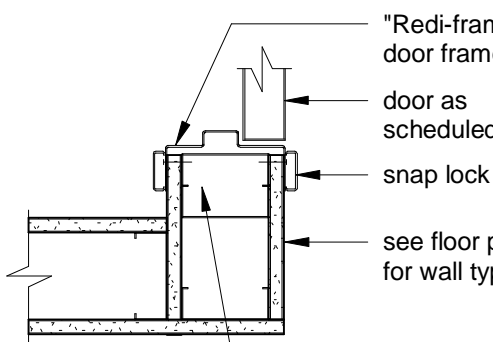
2 Jamb at Tee
1 1/2" = 1'-0"



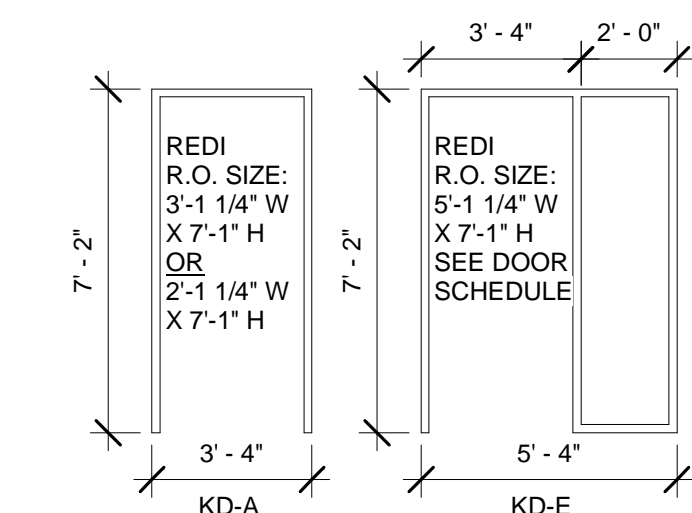
5 Jamb / Head Sim.
1 1/2" = 1'-0"



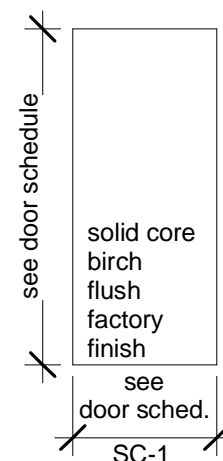
3 Jamb
1 1/2" = 1'-0"



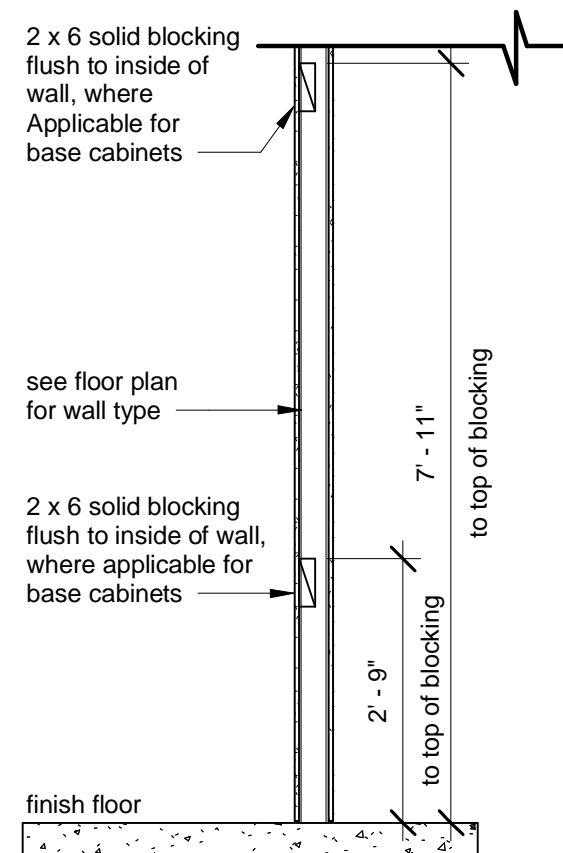
6 Jamb at Corner
1 1/2" = 1'-0"



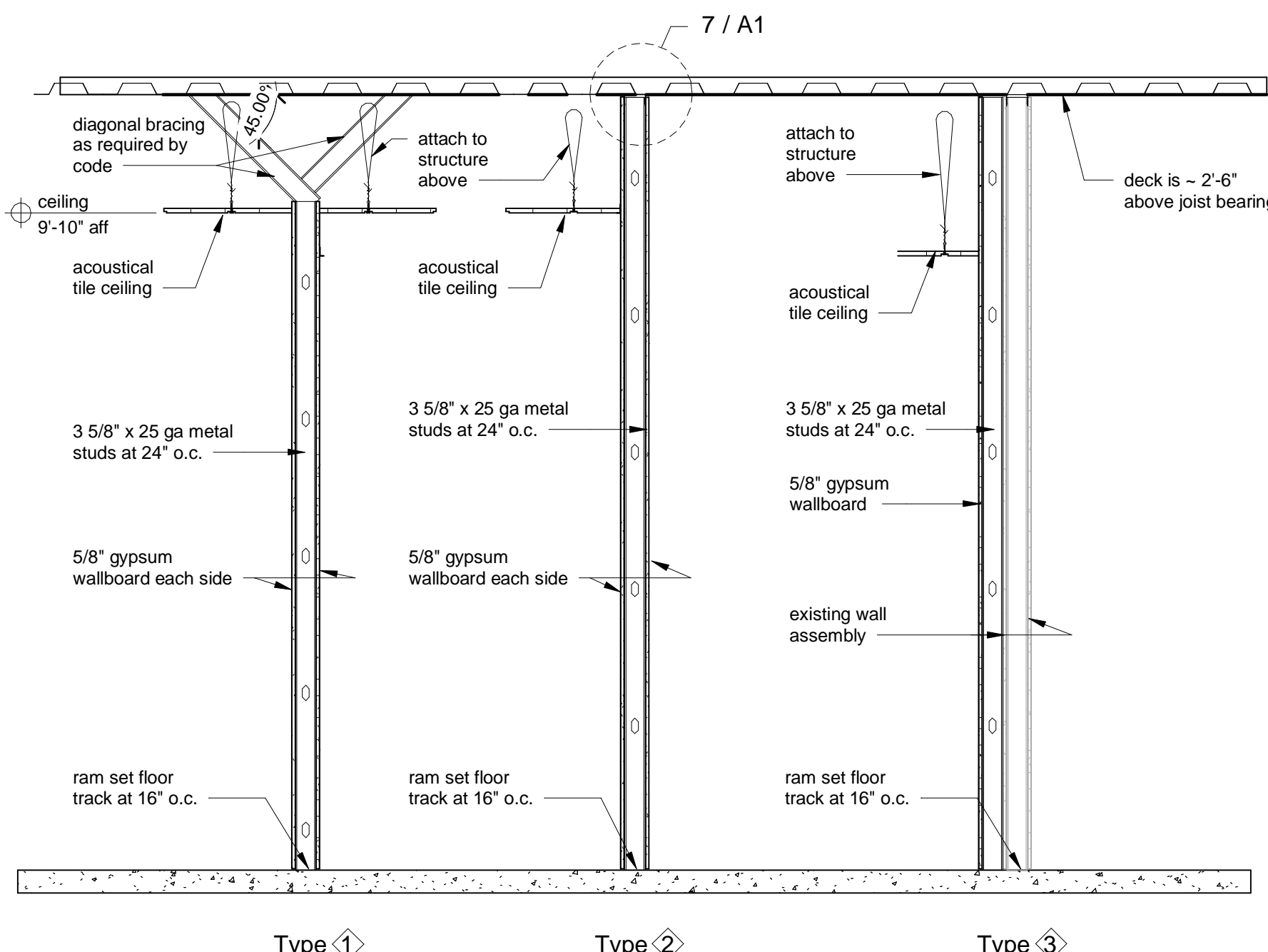
11 Frame Types
1/4" = 1'-0"



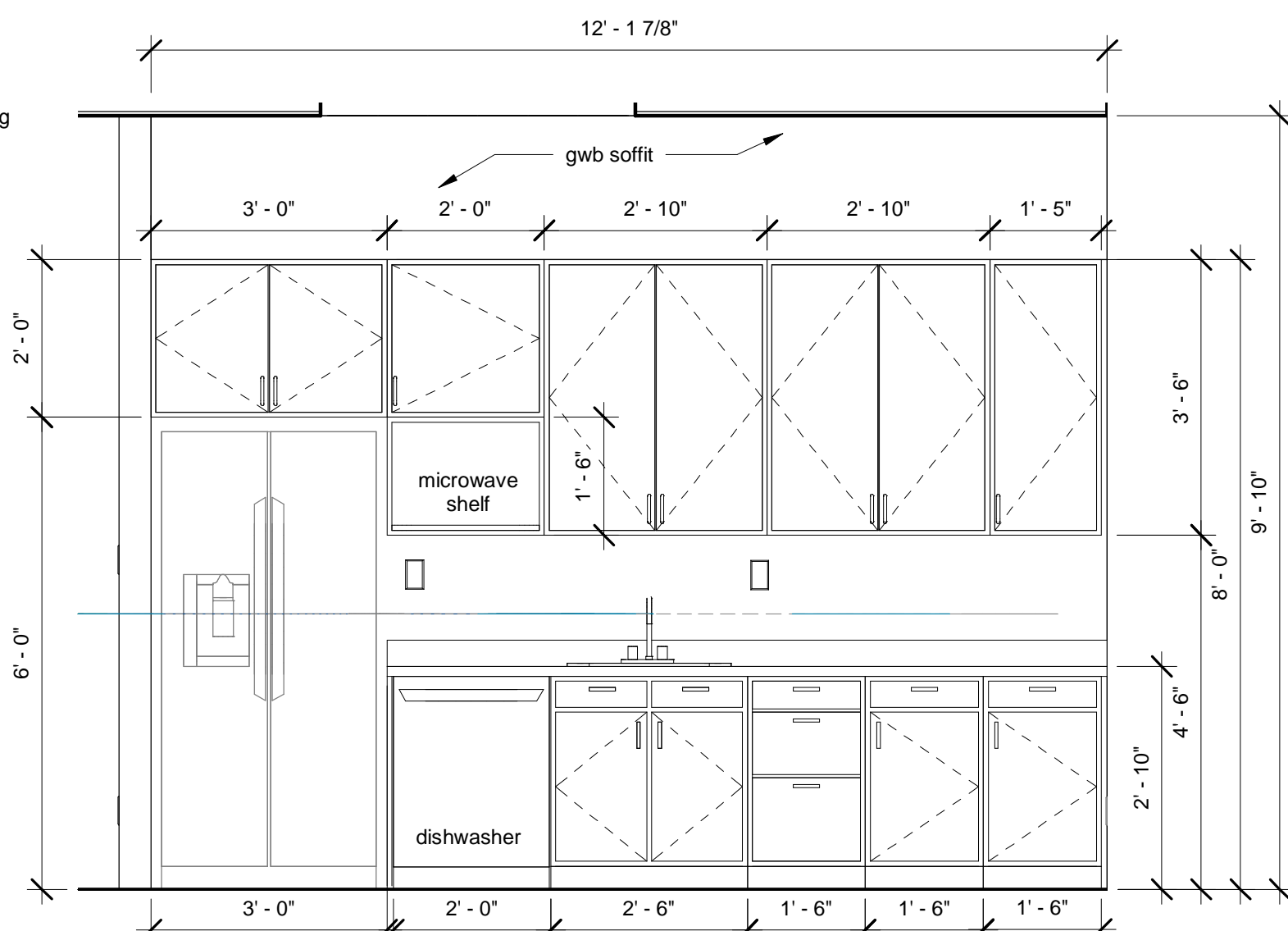
12 Door Types
1/4" = 1'-0"



10 Blocking
1/2" = 1'-0"



9 Partition Types:
1/2" = 1'-0"



8 Interior Elevation - Kitchen Casework
1/2" = 1'-0"



Architectural

BEA Consulting Engineers
4343 Pan American Freeway Suite 238
Albuquerque, New Mexico 87107

MECHENBIE
CONSTRUCTION INC.
1800 WASHINGTON ST. NE SUITE A-5
ALBUQUERQUE, N.M. 87106
OFFICE: (505) 314-7700
WEB: WWW.MECHENBIE.COM