

3974 Fields Lane
Santa Fe, NM 87507

LKS Multifamily Development



Land & Permits for 48 Townhomes

Property Highlights

- Fully approved development plan for either 48 townhomes OR 70 multifamily apartment units + 16 townhomes
- MU zoning
- 6.1 acre site, 110,000 Gross SF residential space
- Project approved by the Planning Commission and Governing Body January 2023
- Close to restaurants, pharmacy, shopping, education and services

Property Description

6.1 acre site for sale with fully approved development plan for either 48 townhomes OR 70 multifamily apartment units in phase 1 and 16 townhomes in phase 2, totaling 86 residential units on this property. Project was approved by the Planning Commission and Governing Body in hearings in the beginning of 2023. Site is close to shopping, education and services. One of the last infill sites for residential development in the Airport Road area.

For more information, contact:

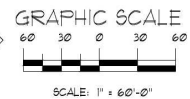
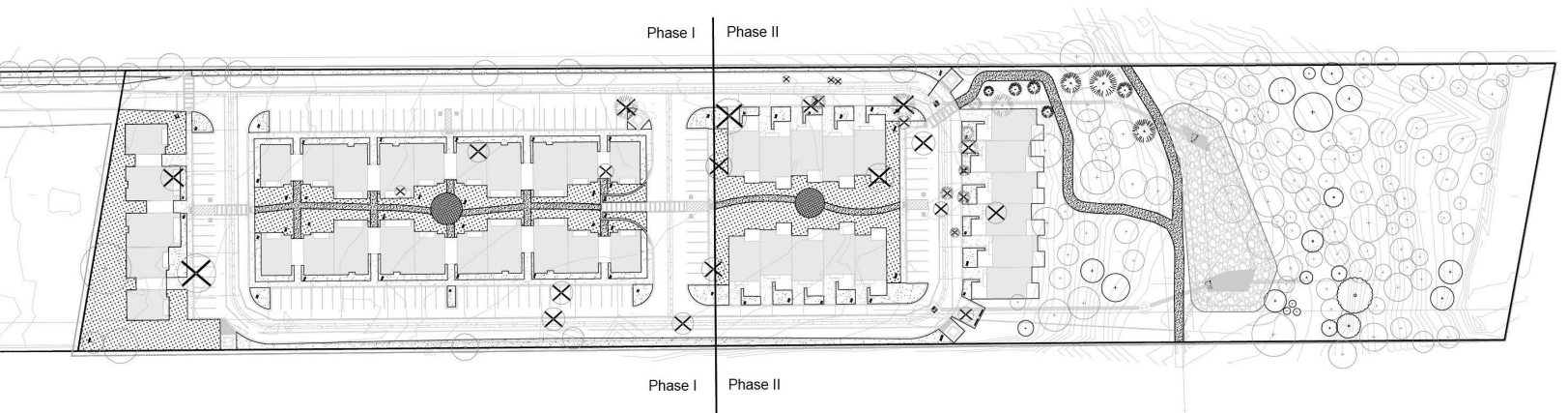
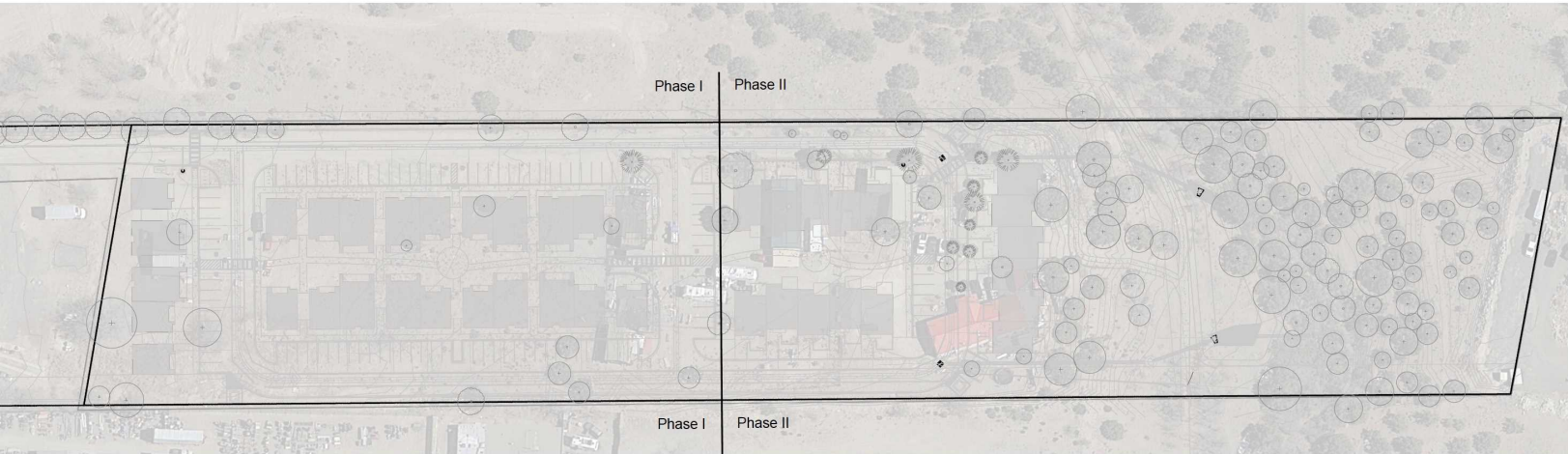
TAI BIXBY
(505) 577-3524
tai@tba.team

REA | Real Estate Advisors
901 Rio Grande Blvd NW
#D224
Albuquerque, NM 87104
505-539-3200 (p)
www.reanm.com

We obtained the information above from sources we believe to be reliable. However, we have not verified its accuracy and make no guarantee, warranty or representation about it. It is submitted subject to the possibility of errors, omissions, change of price, rental or other conditions, prior sale, lease or financing, or withdrawal without notice. We include projections, opinions, assumptions or estimates for example only, and they may not represent current or future performance of the property. You and your tax and legal





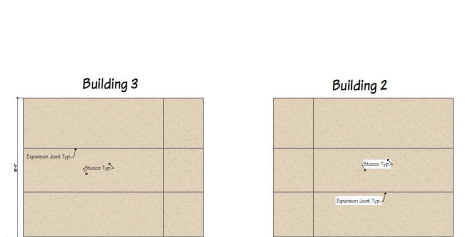




BUILDING 2 WEST SIDE ELEVATIONS "BB"

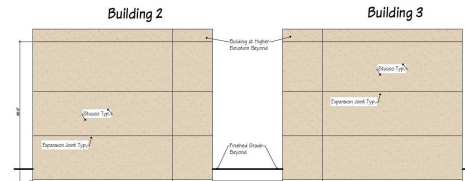
*Building 3 Similar

Scale 3/32" = 1'-0"



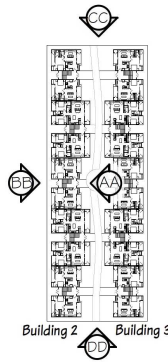
BUILDING 2 & 3 NORTH SIDE ELEVATIONS "CC"

Scale 3/32" = 1'-0"



BUILDING 2 & 3 SOUTH SIDE ELEVATIONS "DD"

Scale 3/32" = 1'-0"



BUILDING 2 EAST SIDE ELEVATIONS "AA"

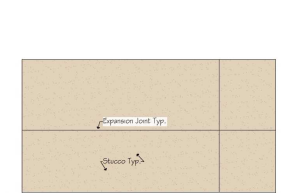
*Building 3 Similar

Scale 3/32" = 1'-0"



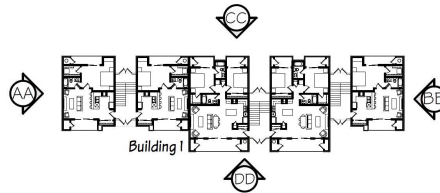
BUILDING 1 SOUTH ELEVATIONS "DD"

Scale 1/8" = 1'-0"



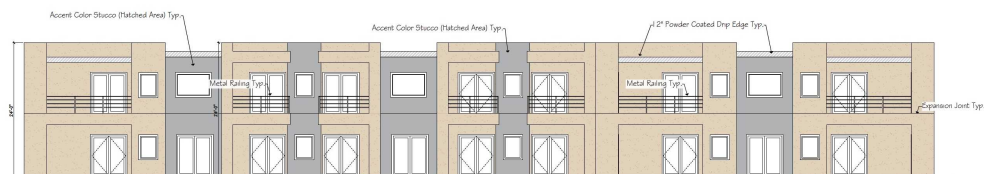
BUILDING 1 EAST SIDE ELEVATIONS "AA"

Scale 1/8" = 1'-0"



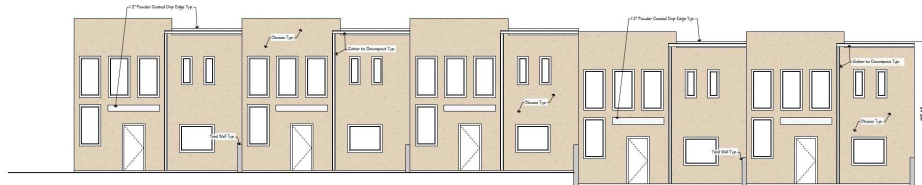
BUILDING 1 WEST SIDE ELEVATIONS "BB"

Scale 1/8" = 1'-0"



BUILDING 1 NORTH ELEVATIONS "CC"

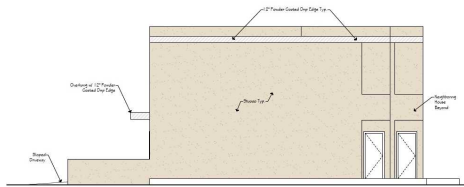
Scale 1/8" = 1'-0"



BUILDING 4 WEST SIDE "AA"

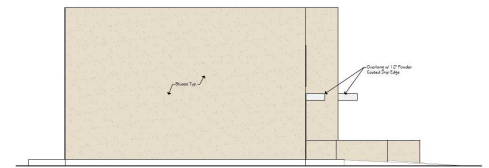
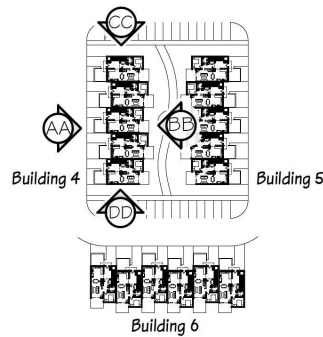
*Building 5 & 6 Similar

Scale 1/8" = 1'-0"



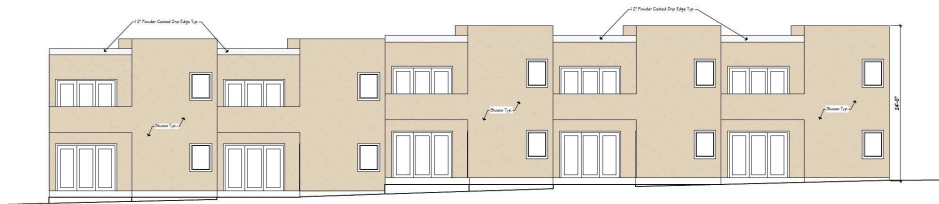
BUILDING 4 SOUTH SIDE ELEVATIONS "DD"

Scale 1/8" = 1'-0"



BUILDING 4 SOUTH SIDE ELEVATIONS "CC"

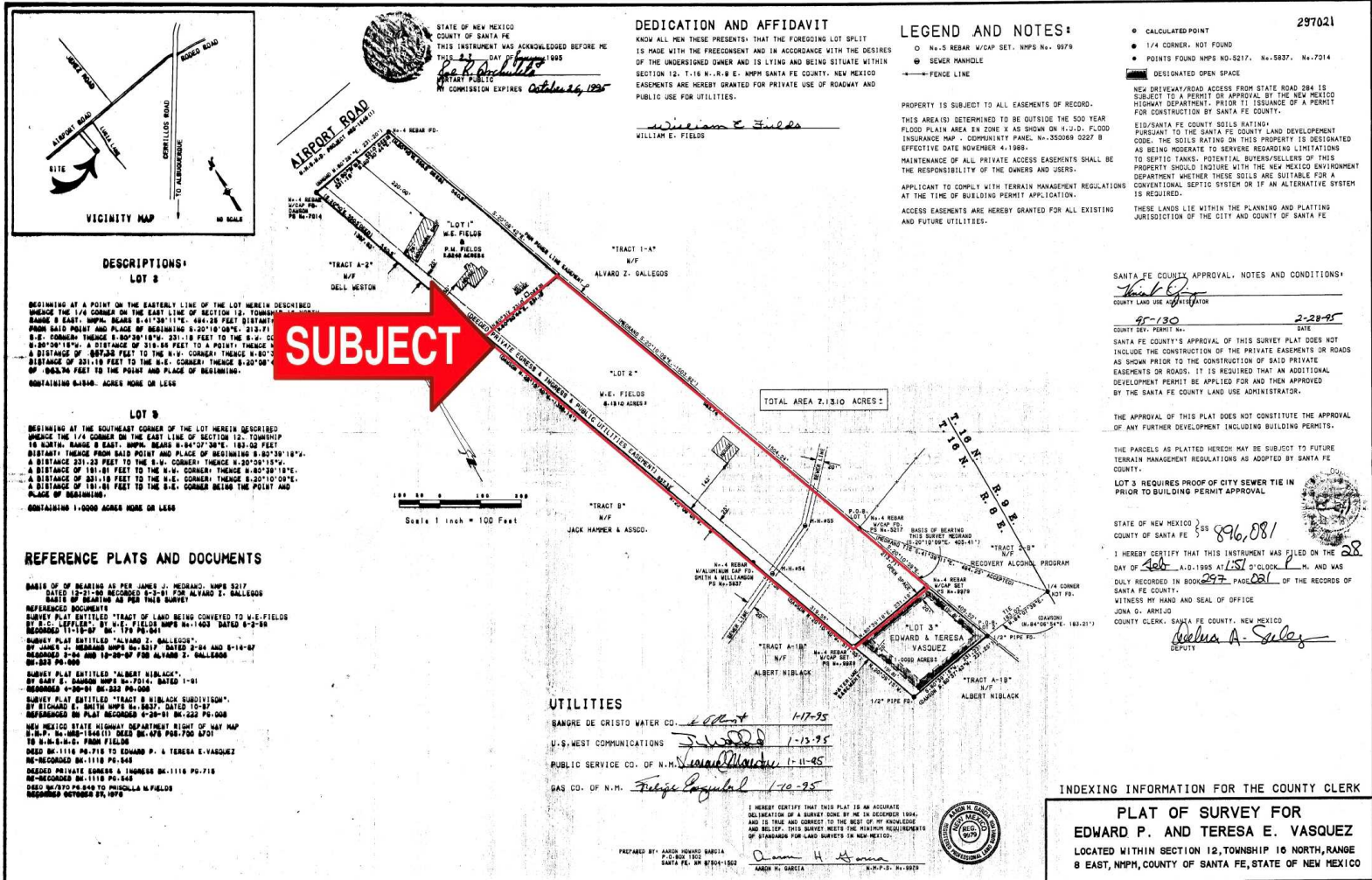
Scale 1/8" = 1'-0"



BUILDING 4 EAST SIDE "BB"

*Building 5 & 6 Similar

Scale 1/8" = 1'-0"





Tai Bixby, CCIM

505-577-3524

tai@tba.team

Tai has joined Real Estate Advisors Santa Fe Division with over 16 years of experience. He has been in real estate since 2004, working in residential and commercial brokerage, as well as development. Earning his CCIM designation in 2012, Tai has been involved with commercial real estate exclusively since 2018. Tai's experience includes real estate brokerage, office/industrial/retail sales/leasing, land sales both residential and commercial, 1031 tax deferred exchanges, financial/market/leasing analysis in the Santa Fe/Albuquerque real estate markets. In addition, Tai has extensive experience in investment management/analysis on behalf of both partnership and clients with passive and active investments. Tai enjoys working in commercial real estate because he likes problem solving and helping people achieve their business and financial goals. His work in commercial real estate also allows him the ability to have fun and meet interesting people. When Tai is not at work, you can find him snowboarding, mountain biking, sailing and traveling internationally. He balances his work/life schedule by focusing first on what matters most in his life; his faith and his family.