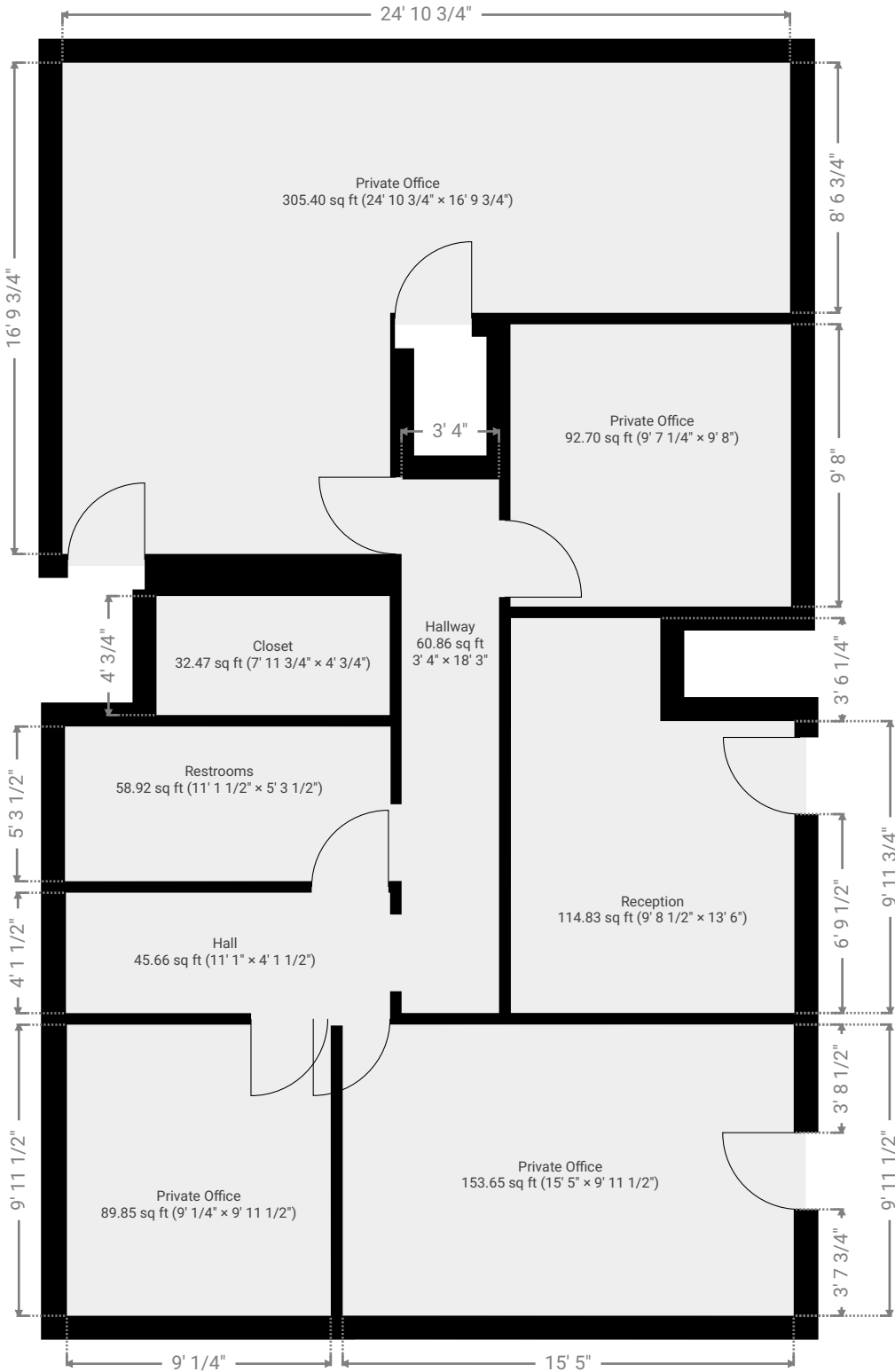
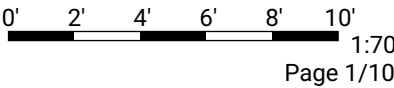


▼ Ground Floor

TOTAL AREA: 1147.18 sq ft • LIVING AREA: 52.02 sq ft • ROOMS: 9



THIS FLOORPLAN IS PROVIDED WITHOUT WARRANTY OF ANY KIND. SENSOPIA DISCLAIMS ANY WARRANTY INCLUDING, WITHOUT LIMITATION, SATISFACTORY QUALITY OR ACCURACY OF DIMENSIONS.

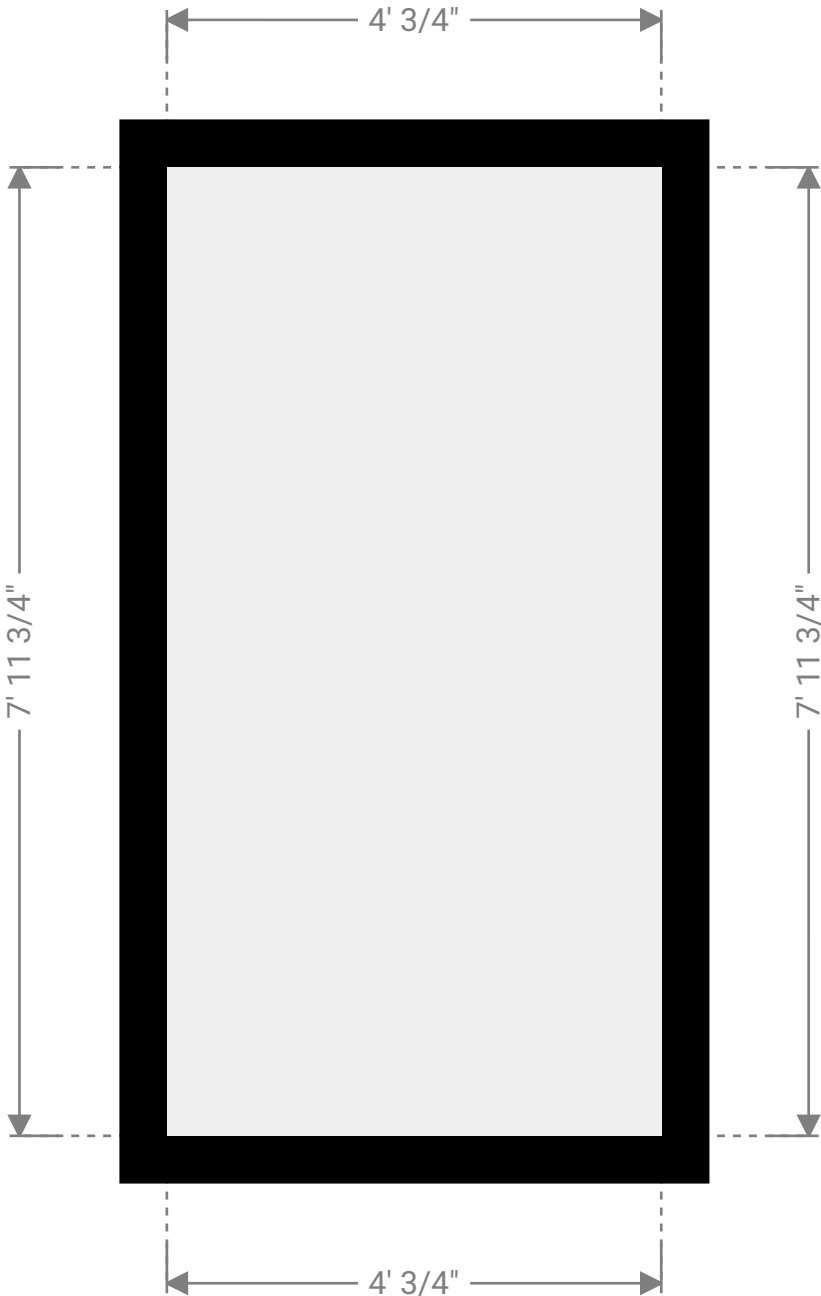
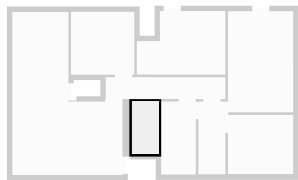


755 South Telshor Boulevard, 88011 Las Cruces, New Mexico, US
TOTAL AREA: 1147.18 sq ft • LIVING AREA: 52.02 sq ft • FLOORS: 1 • ROOMS: 9

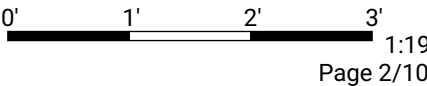
SUBMITTED BY Kary Bulsterbaum
kary@steinborn.com

▼ Closet
Ground Floor

WIDTH: 4' 3/4" • LENGTH: 7' 11 3/4" • CEILING HEIGHT: 1' 7 3/4"
AREA: 32.47 sq ft • PERIMETER: 24' 1"



THIS FLOORPLAN IS PROVIDED WITHOUT WARRANTY OF ANY KIND. SENSOPIA DISCLAIMS ANY WARRANTY INCLUDING, WITHOUT LIMITATION, SATISFACTORY QUALITY OR ACCURACY OF DIMENSIONS.

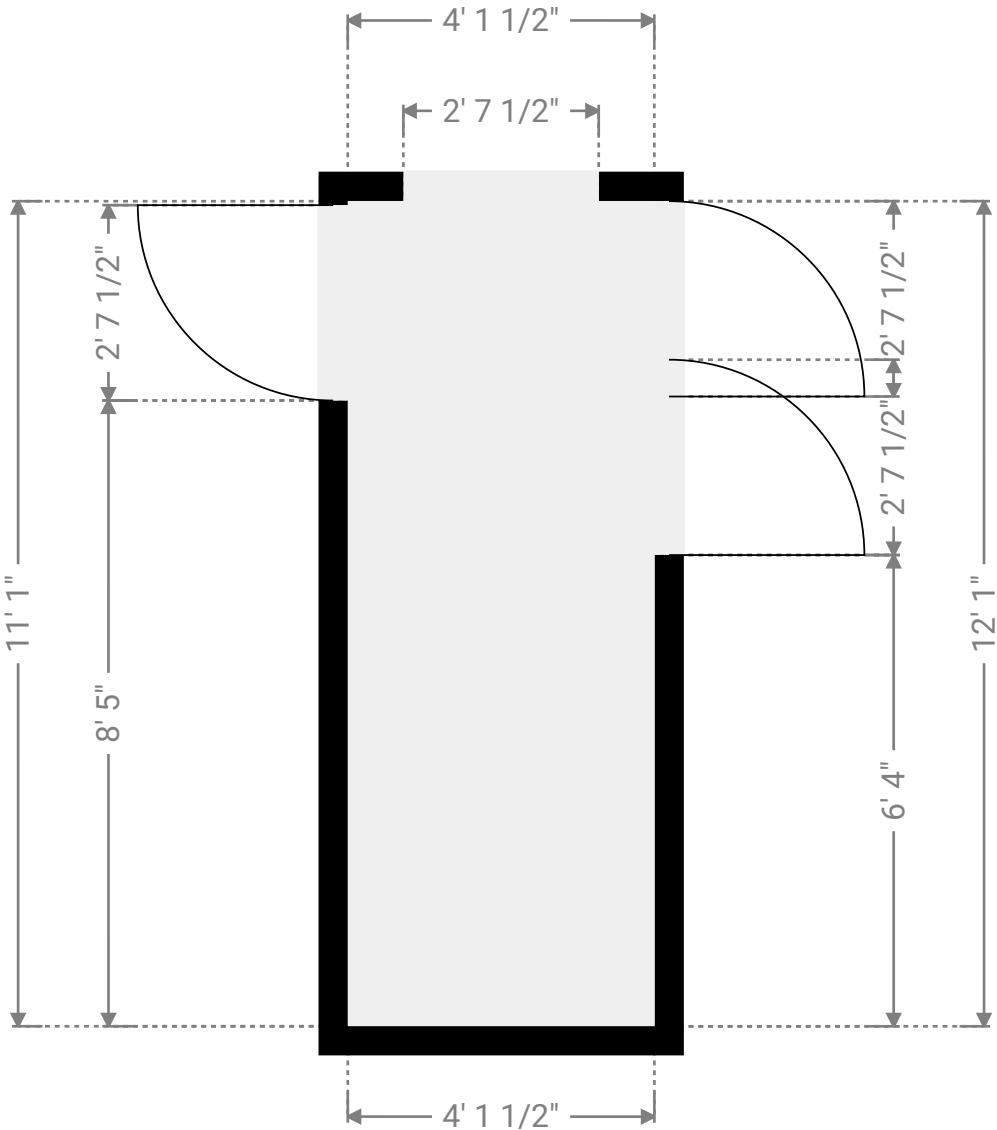
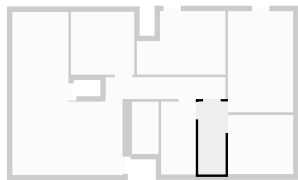


755 South Telshor Boulevard, 88011 Las Cruces, New Mexico, US
TOTAL AREA: 1147.18 sq ft • LIVING AREA: 52.02 sq ft • FLOORS: 1 • ROOMS: 9

SUBMITTED BY Kary Bulsterbaum
kary@steinborn.com

▼ Hall
Ground Floor

WIDTH: 4' 1 1/2" • LENGTH: 11' 1" • CEILING HEIGHT: 1' 7 3/4"
AREA: 45.66 sq ft • PERIMETER: 30' 5"

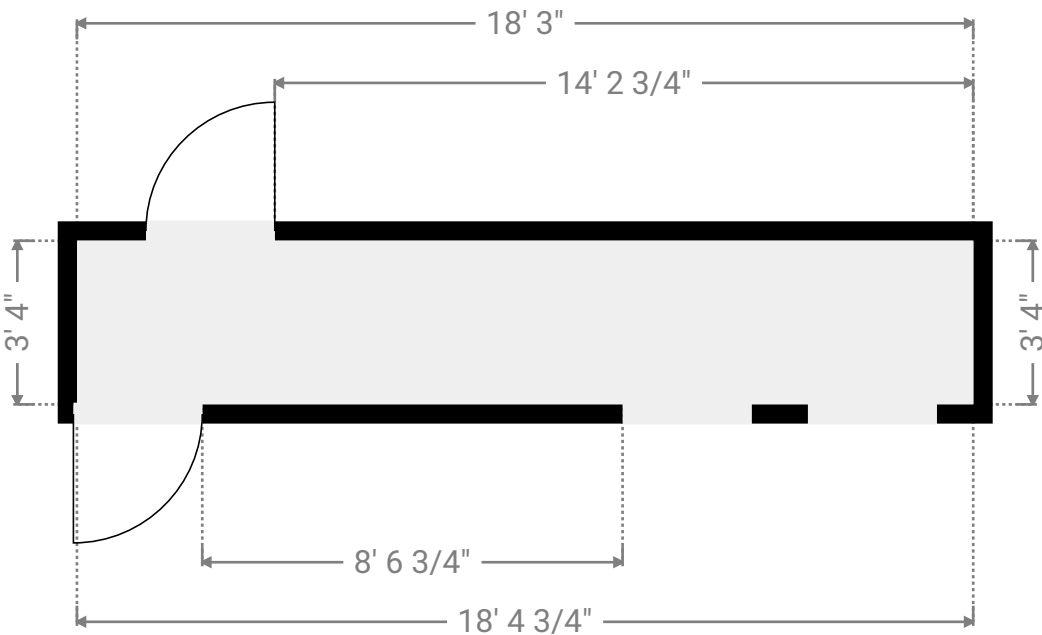
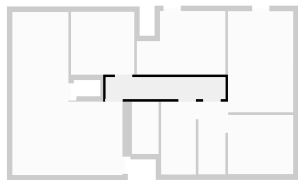


755 South Telshor Boulevard, 88011 Las Cruces, New Mexico, US
TOTAL AREA: 1147.18 sq ft • LIVING AREA: 52.02 sq ft • FLOORS: 1 • ROOMS: 9

SUBMITTED BY Kary Bulsterbaum
kary@steinborn.com

▼ Hallway
Ground Floor

WIDTH: 18' 3" • LENGTH: 3' 4" • CEILING HEIGHT: 1' 7 3/4"
AREA: 60.86 sq ft • PERIMETER: 43' 2 1/4"



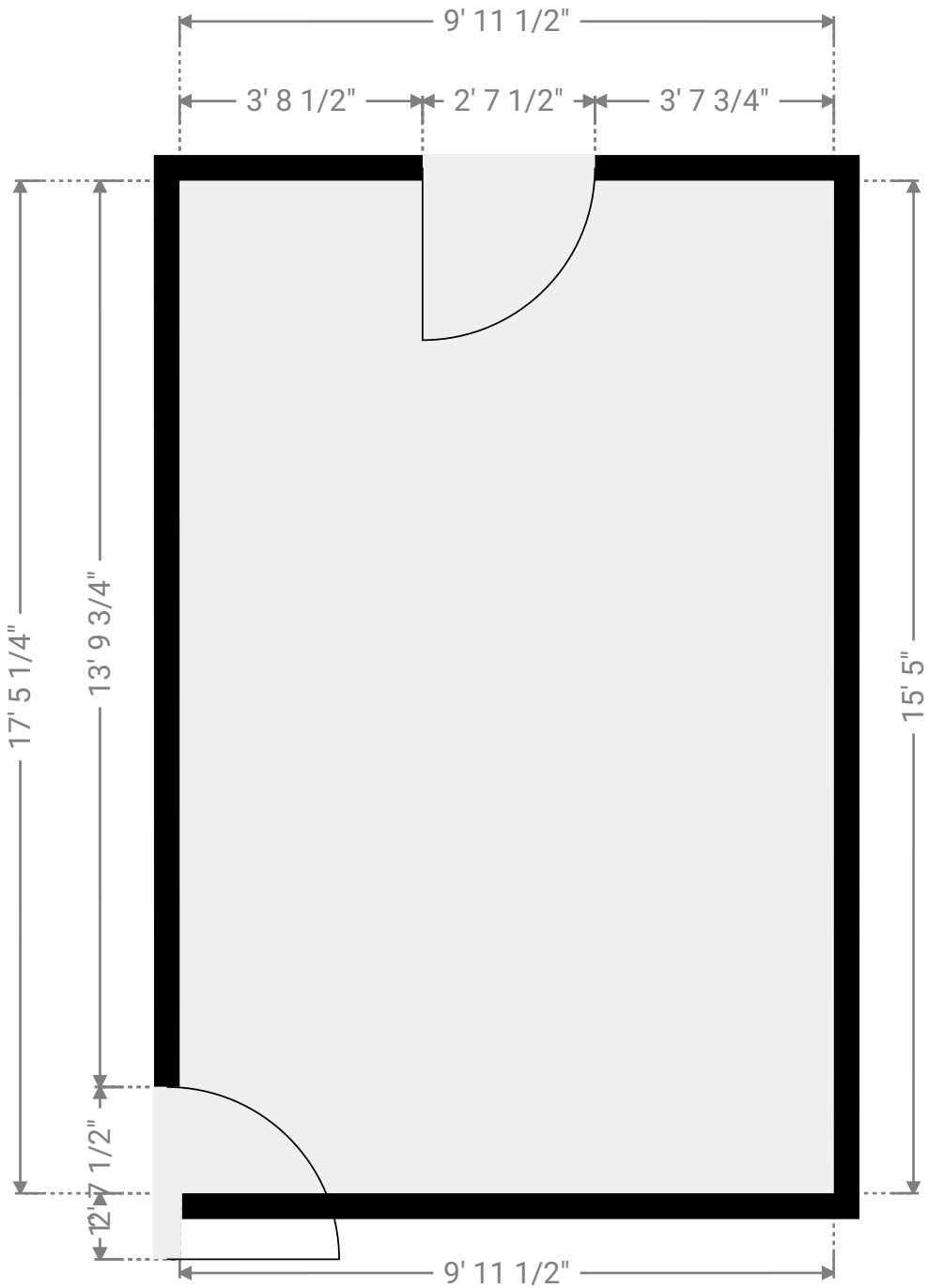
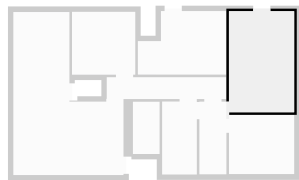
THIS FLOORPLAN IS PROVIDED WITHOUT WARRANTY OF ANY KIND. SENSOPIA DISCLAIMS ANY WARRANTY INCLUDING, WITHOUT LIMITATION, SATISFACTORY QUALITY OR ACCURACY OF DIMENSIONS.

755 South Telshor Boulevard, 88011 Las Cruces, New Mexico, US
TOTAL AREA: 1147.18 sq ft • LIVING AREA: 52.02 sq ft • FLOORS: 1 • ROOMS: 9

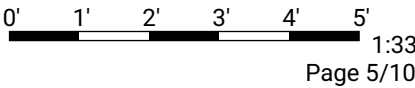
SUBMITTED BY Kary Bulsterbaum
kary@steinborn.com

▼ Private Office
Ground Floor

WIDTH: 9' 11 1/2" • LENGTH: 15' 5" • CEILING HEIGHT: 1' 7 3/4"
AREA: 153.65 sq ft • PERIMETER: 50' 9 1/4"



THIS FLOORPLAN IS PROVIDED WITHOUT WARRANTY OF ANY KIND. SENSOPIA DISCLAIMS ANY WARRANTY INCLUDING, WITHOUT LIMITATION, SATISFACTORY QUALITY OR ACCURACY OF DIMENSIONS.

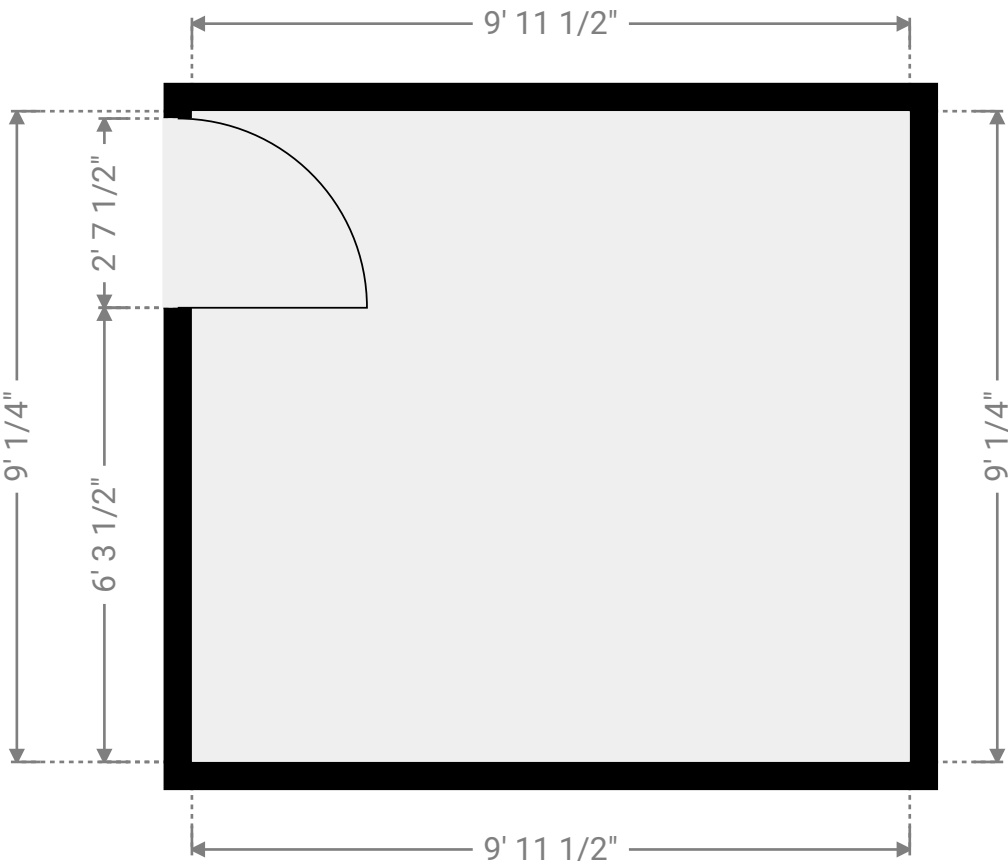
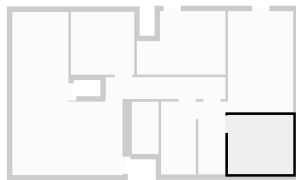


755 South Telshor Boulevard, 88011 Las Cruces, New Mexico, US
TOTAL AREA: 1147.18 sq ft • LIVING AREA: 52.02 sq ft • FLOORS: 1 • ROOMS: 9

SUBMITTED BY Kary Bulsterbaum
kary@steinborn.com

▼ Private Office
Ground Floor

WIDTH: 9' 11 1/2" • LENGTH: 9' 1/4" • CEILING HEIGHT: 1' 7 3/4"
AREA: 89.85 sq ft • PERIMETER: 37' 11 1/2"



THIS FLOORPLAN IS PROVIDED WITHOUT WARRANTY OF ANY KIND. SENSOPIA DISCLAIMS ANY WARRANTY INCLUDING, WITHOUT LIMITATION, SATISFACTORY QUALITY OR ACCURACY OF DIMENSIONS.

My New Project

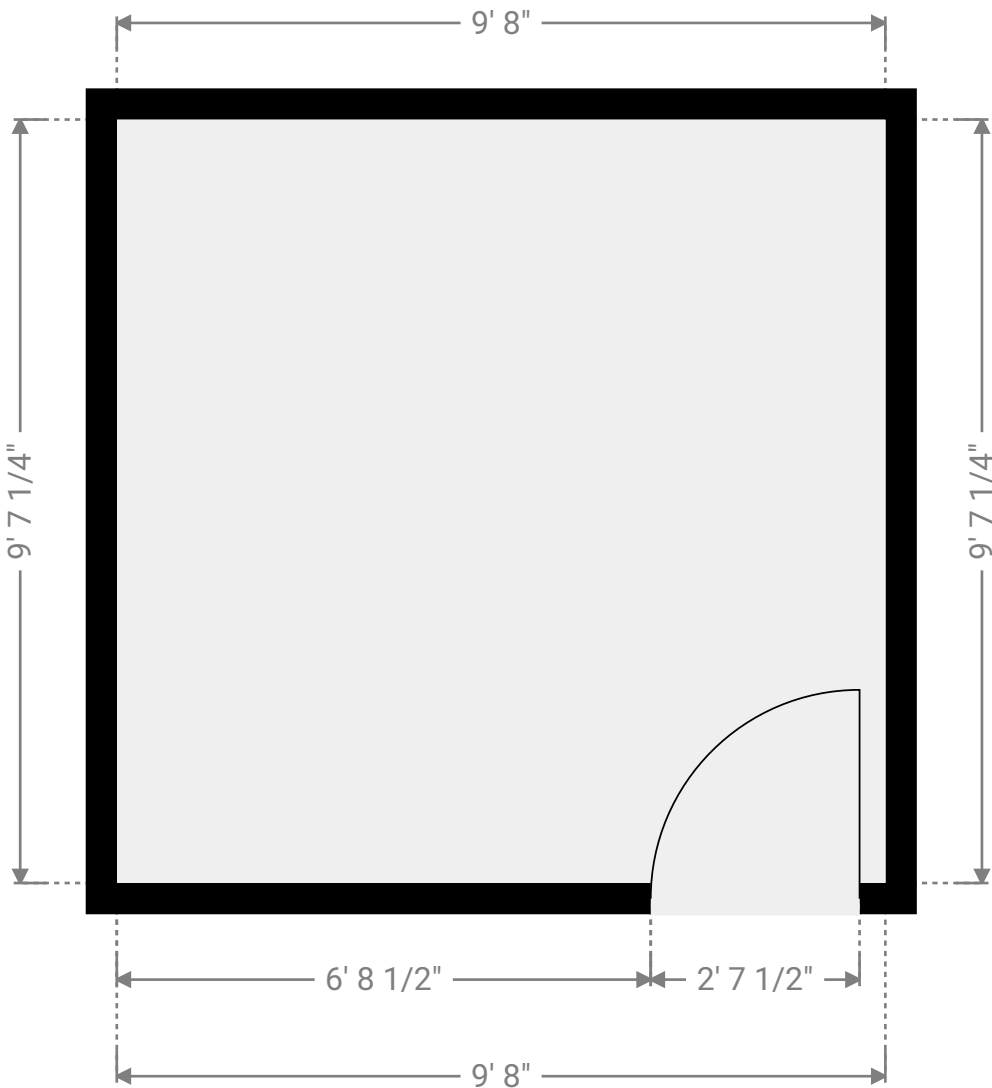
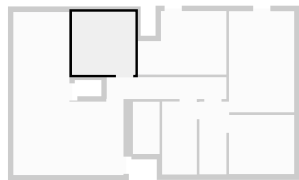


755 South Telshor Boulevard, 88011 Las Cruces, New Mexico, US
TOTAL AREA: 1147.18 sq ft • LIVING AREA: 52.02 sq ft • FLOORS: 1 • ROOMS: 9

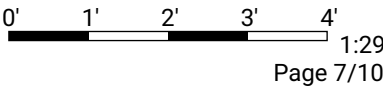
SUBMITTED BY Kary Bulsterbaum
kary@steinborn.com

▼ Private Office
Ground Floor

WIDTH: 9' 8" • LENGTH: 9' 7 1/4" • CEILING HEIGHT: 1' 7 3/4"
AREA: 92.70 sq ft • PERIMETER: 38' 6 1/4"



THIS FLOORPLAN IS PROVIDED WITHOUT WARRANTY OF ANY KIND. SENSOPIA DISCLAIMS ANY WARRANTY INCLUDING, WITHOUT LIMITATION, SATISFACTORY QUALITY OR ACCURACY OF DIMENSIONS.

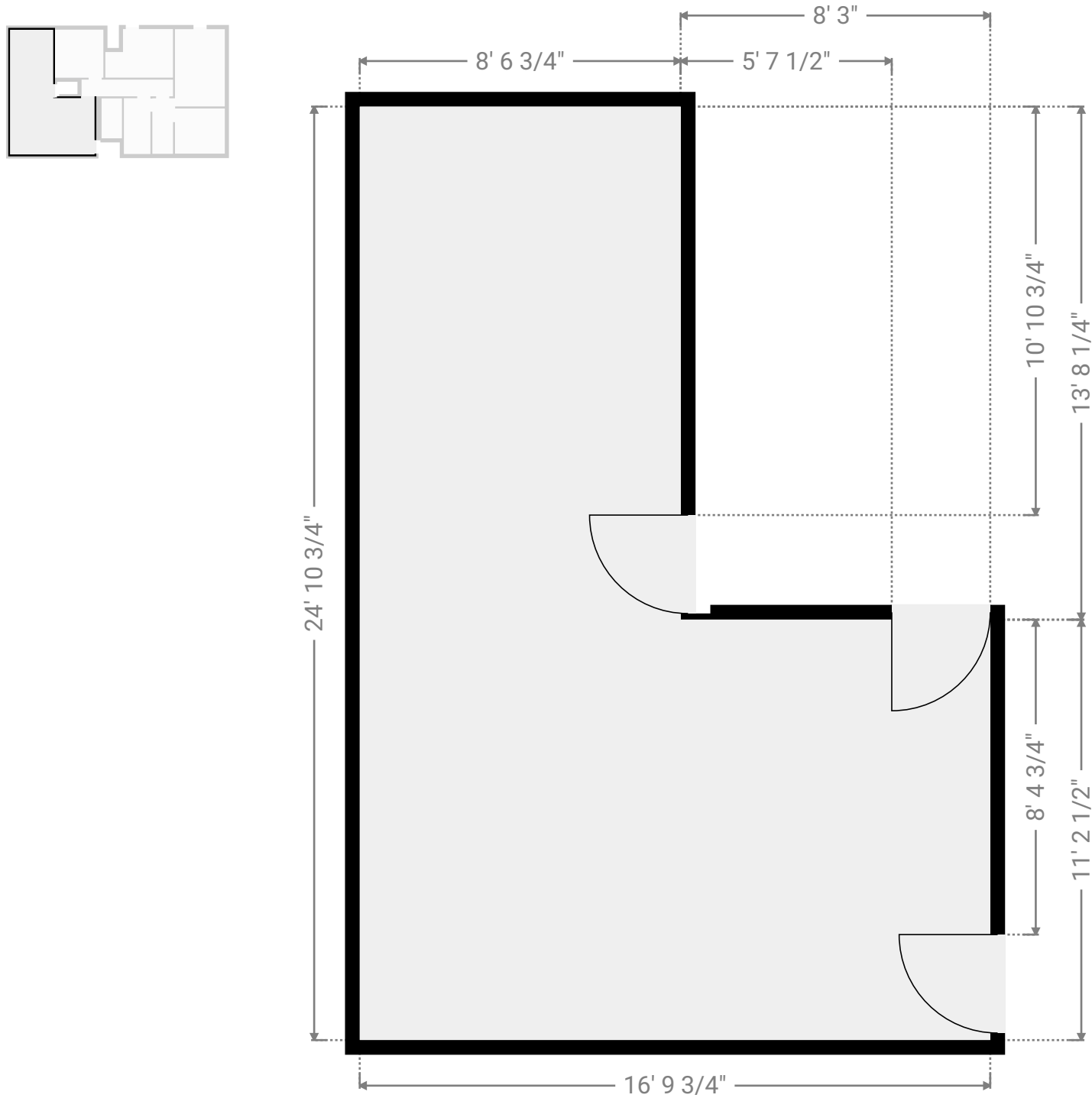


755 South Telshor Boulevard, 88011 Las Cruces, New Mexico, US
TOTAL AREA: 1147.18 sq ft • LIVING AREA: 52.02 sq ft • FLOORS: 1 • ROOMS: 9

SUBMITTED BY Kary Bulsterbaum
kary@steinborn.com

▼ Private Office
Ground Floor

WIDTH: 16' 9 3/4" • LENGTH: 24' 10 3/4" • CEILING HEIGHT: 1' 7 3/4"
AREA: 305.40 sq ft • PERIMETER: 83' 4 3/4"



My New Project

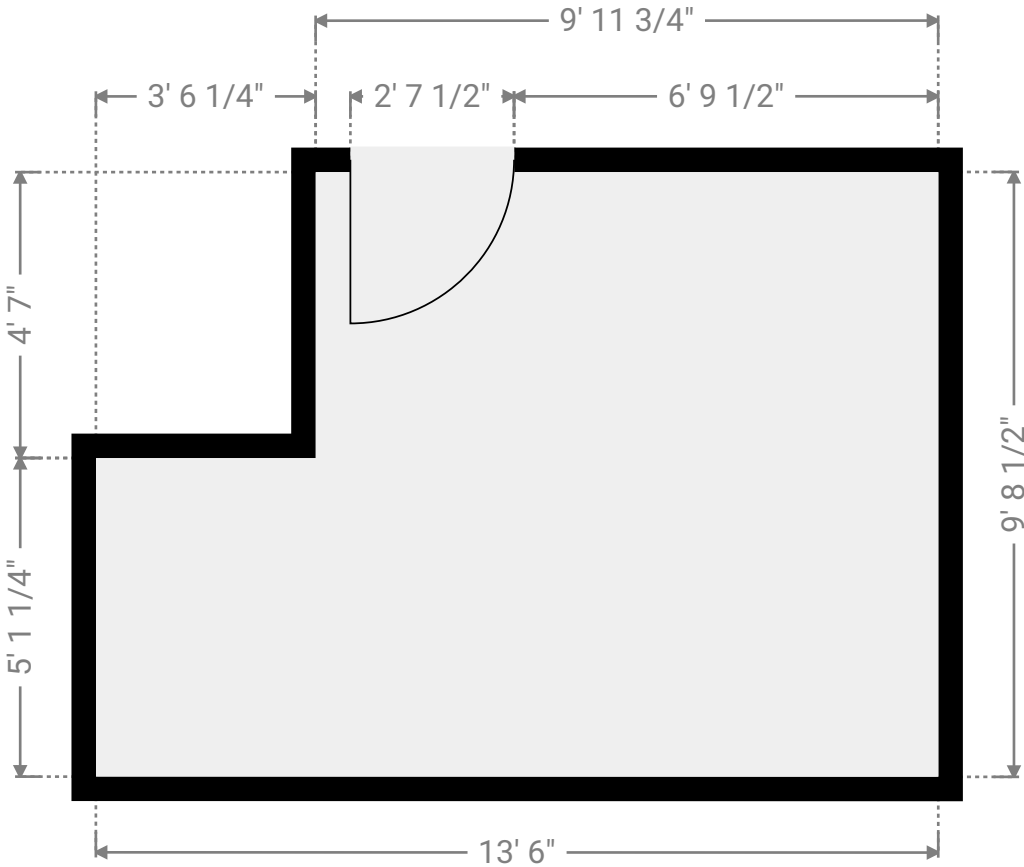
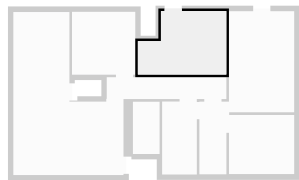


755 South Telshor Boulevard, 88011 Las Cruces, New Mexico, US
TOTAL AREA: 1147.18 sq ft • LIVING AREA: 52.02 sq ft • FLOORS: 1 • ROOMS: 9

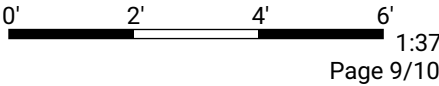
SUBMITTED BY Kary Bulsterbaum
kary@steinborn.com

▼ Reception
Ground Floor

WIDTH: 13' 6" • LENGTH: 9' 8 1/2" • CEILING HEIGHT: 1' 7 3/4"
AREA: 114.83 sq ft • PERIMETER: 46' 5"



THIS FLOORPLAN IS PROVIDED WITHOUT WARRANTY OF ANY KIND. SENSOPIA DISCLAIMS ANY WARRANTY INCLUDING, WITHOUT LIMITATION, SATISFACTORY QUALITY OR ACCURACY OF DIMENSIONS.

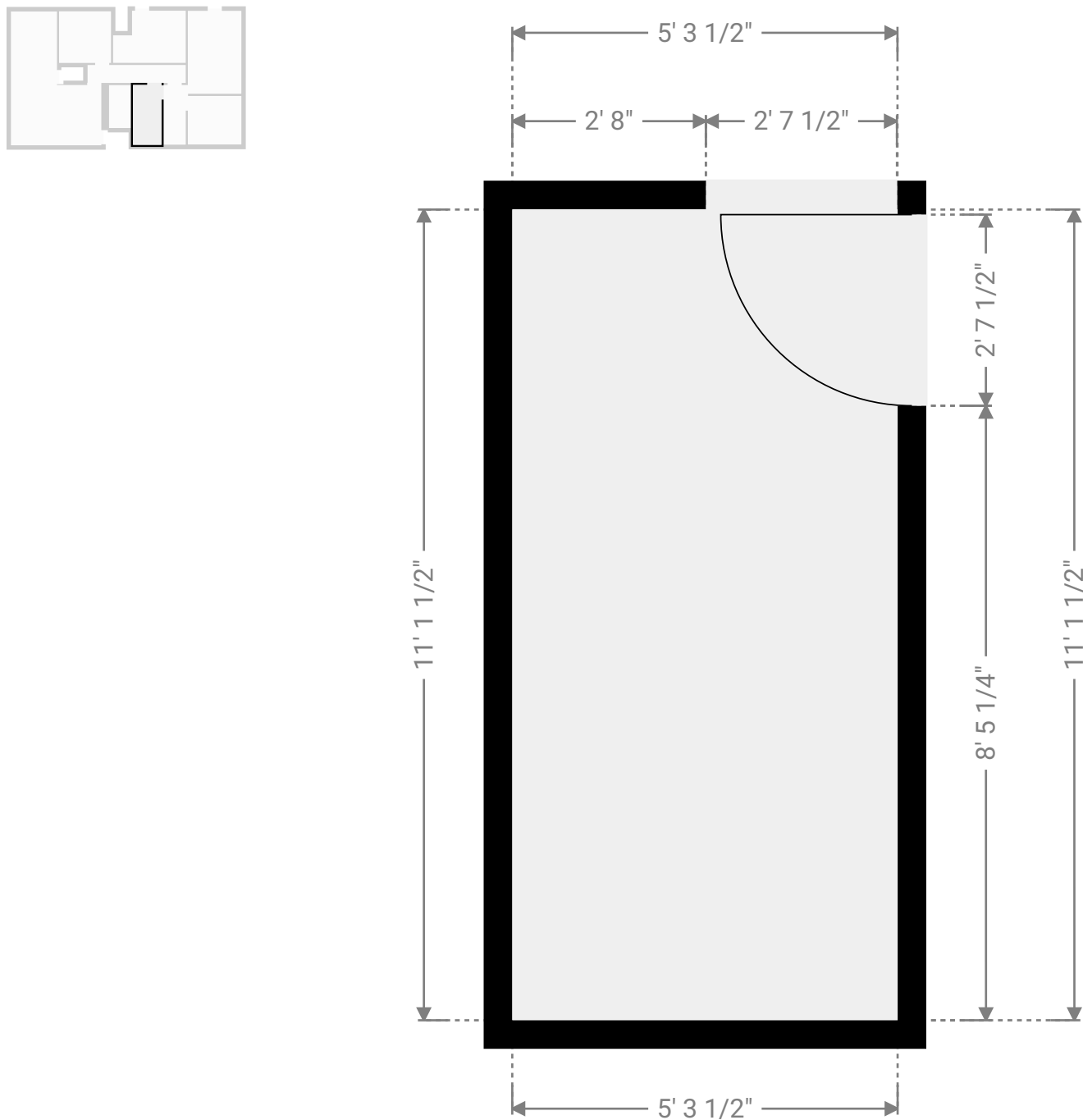


755 South Telshor Boulevard, 88011 Las Cruces, New Mexico, US
TOTAL AREA: 1147.18 sq ft • LIVING AREA: 52.02 sq ft • FLOORS: 1 • ROOMS: 9

SUBMITTED BY Kary Bulsterbaum
kary@steinborn.com

▼ Restrooms
Ground Floor

WIDTH: 5' 3 1/2" • LENGTH: 11' 1 1/2" • CEILING HEIGHT: 1' 7 3/4"
AREA: 58.92 sq ft • PERIMETER: 32' 10 1/4"



THIS FLOORPLAN IS PROVIDED WITHOUT WARRANTY OF ANY KIND. SENSOPIA DISCLAIMS ANY WARRANTY INCLUDING, WITHOUT LIMITATION, SATISFACTORY QUALITY OR ACCURACY OF DIMENSIONS.

