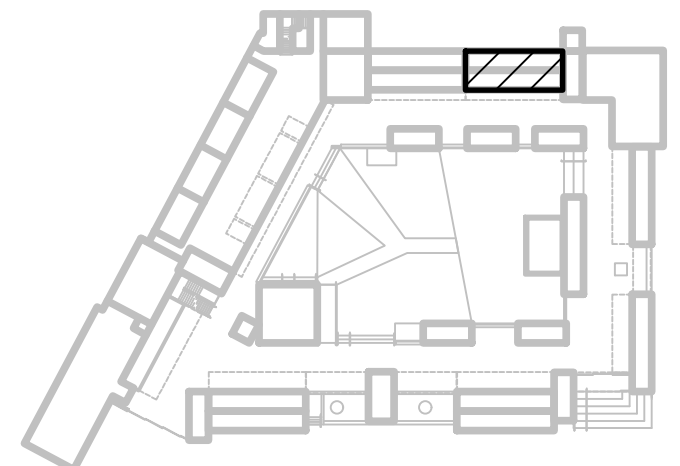


GENERAL NOTES

1. INTERIOR AREA DIMENSIONS ARE SHOWN TO FACE OF FINISHED WALL.



IF THIS SHEET IS NOT 24"x36" THEN THE DRAWINGS ON IT ARE NOT TO SCALE

FOR REFERENCE USE ONLY



No.	Description	Date

THE BLOCK
@ Enchanted Hills

RIO RANCHO, NEW MEXICO

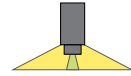
RETAIL 40' C102

Project Number	2103
Date	7/2/2024

A807

LIGHT FIXTURES

Sculpt | Surface - with Lens and Accent Options



LED SYSTEM - for ACCENT

CRI	Minimum 80 or 90 color rendering index
CCT	Choice of 2700K, 3000K, 3500K and 4000K color temperature with a great color consistency (within 3.0-step MacAdam ellipse).
LED life	Minimum 50,000h with 70% of lumen maintenance in 25°C ambient temperature, in compliance with IES LM-80 testing measurements.
Thermal Management	Aluminum housing acting as the heat sink to maximize life.

CONSTRUCTION

Housing	Extruded aluminum (0.080" nominal)
End Cap	Die cast aluminum
Interior Brackets	Die formed sheet steel (20 gauge)
Reflectors	White powder coated sheet steel (22 gauge)
Lenses	Extruded acrylic (0.060" nominal) - injection moulded
Hanger	Die cast aluminum
Suspension	Sliding aircraft cable along product length
Cable Grips	Quick connecting / release

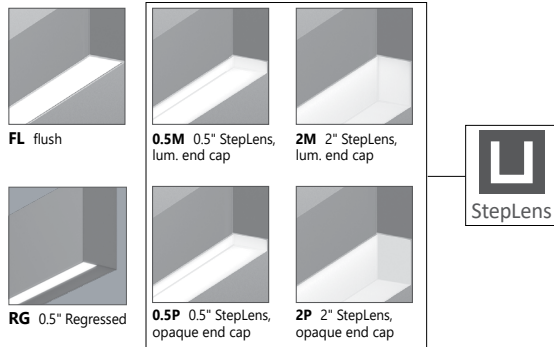
ELECTRICAL - for ACCENT

Input Voltage 120V, 277V, UNV.

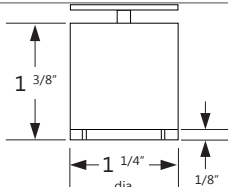
WARRANTY

Axis lighting will warrant defective LEDs, boards, and drivers for 5 years from date of purchase. Warranty is valid if luminaire is installed and used according to specifications. If defective, Axis will send replacement boards or drivers at no cost along with detailed replacement instructions and instructions on how to return defective components to Axis.

SHIELDING - Frosted acrylic spotless lens



HEXCELL SHIELDING OPTIONS



SAFETY NOTE

Although LED Accents operate at cooler temperatures than halogen lamps, it is recommended that gloves be worn when adjusting Accents that have been energized.

***Patent Number: 9416535 B1**

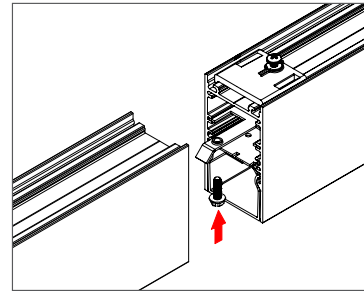
WEIGHT

4 ft	8 lbs / 3.6 kg
8 ft	16 lbs / 7.3 kg
12 ft	24 lbs / 10.9 kg

JOINERS


In order to allow very long runs of SCULPT luminaires, Axis has developed an effective joining system. Special care has been taken to maximize the performance of the joiner for each SCULPT option.

NOTE: Mount each system segment individually. Do not assemble system prior to mounting.



i Allow a minimum of 6" between end of long runs and vertical wall

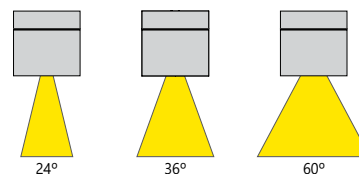
APPROVALS

Certified to UL and CUL standards  Suitable for damp locations.

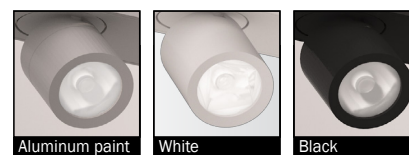
SYSTEM (S#)

SCULPT linear systems, with the use of a strong profile, allow for a nearly hair thin connection system of continuous runs. Lengths of 4', 8', 12' as well as custom lengths are available. Runs of SCULPT that are greater than 12' in length are designated as systems (S#). This means that the run is comprised of a combination of 4', 8' and/or 12' sections to be assembled on site using our joining system. For more information on systems and joining, please refer to the SCULPT installation sheets available for download at www.axislighting.com.

BEAM SPREADS



FINISHES



SERVICE SINK



STAINLESS STEEL
HAND SINKS
A.D.A COMPLIANT LAVATORIES
Conforms To NSF 61/9 Lead Free Requirements



7-PS-25



7-PS-75



7-PS-26



Optional A.D.A. Compliant Bubbler can be added to the 7-PS-25, 7-PS-26 & 7-PS-75 Only
Use Model # K-47

Item #: _____ Qty #: _____

Model #: _____

Project #: _____

FEATURES:

One piece **Deep Drawn** sink bowl design.

Sink bowl is 16" x 14" x 5".

All sink bowls have a large liberal radii with a minimum dimension of 2" and are rectangular in design for increased capacity.

1 1/2" stainless steel drain with strainer plate.

Additional Specific Features:

7-PS-25 6" Extended deck mounted gooseneck faucet with wrist handles & deck mounted liquid soap dispenser.

7-PS-26 includes a "Hands Free" AC/DC operated gooseneck faucet & deck mounted, liquid soap dispenser.

7-PS-75 Sink Only. Faucet not included. Three 1-3/8" dia. Holes Punched.

CONSTRUCTION:

All TIG welded.

Welded areas blended to match adjacent surfaces and to a satin finish.

Die formed Countertop Edge with a 3/8" No-Drip offset.

Bowl made from One sheet of stainless steel - No Seams.

MATERIAL:

Heavy gauge type 304 series stainless steel.

Wall mounting bracket is Galvanized and of offset design.

All fittings are brass / chrome plated unless otherwise indicated.

MECHANICAL:

Faucet supply is 1/2" IPS male thread hot and cold.

Faucet Flow Rate: 1.0 GPM/3.8 LPM aerator. 60 PSI.

Optional 8" O.C. Faucets Available



K-132

Heavy Duty
5-1/2"
Gooseneck



K-133

Heavy Duty
9" Swing
Spout

WARNING:

Equipment that includes a faucet may expose you to chemicals, including lead, that are known to the State of California to cause cancer or birth defects or other reproductive harm. For more Info., visit www.p65warnings.ca.gov.



Customer Service Available To Assist You **1-800-645-3166** 8:30 am - 7:00 pm E.S.T.

For Orders & Customer Service:

Email: customer@advancetabco.com or Fax: 631-242-6900

For Smart Fabrication™ Quotes:

Email: smartfab@advancetabco.com or Fax: 631-586-2933

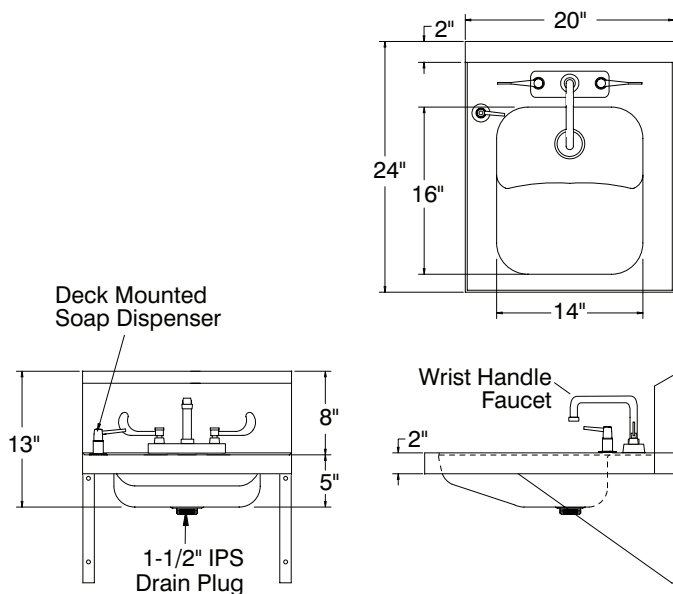
DIMENSIONS and SPECIFICATIONS

TOL Overall: $\pm .500''$ Interior: $\pm .250''$

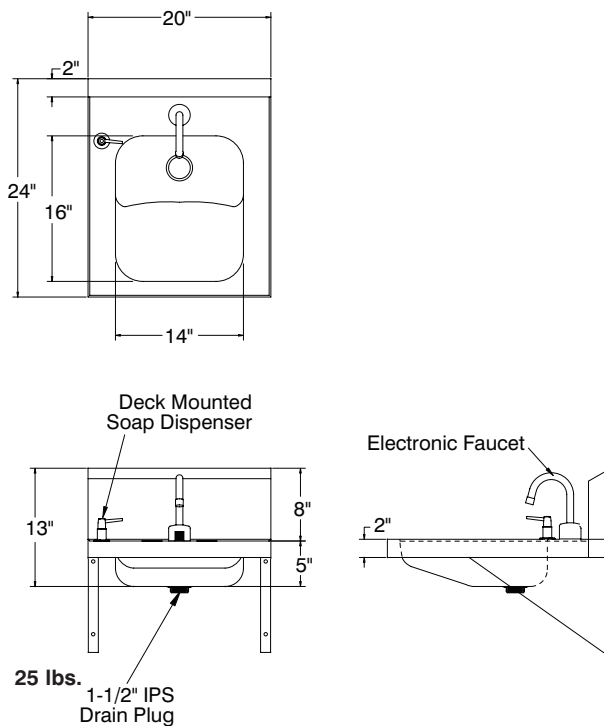
FITTINGS SUPPLIED AS SHOWN

ALL DIMENSIONS ARE TYPICAL

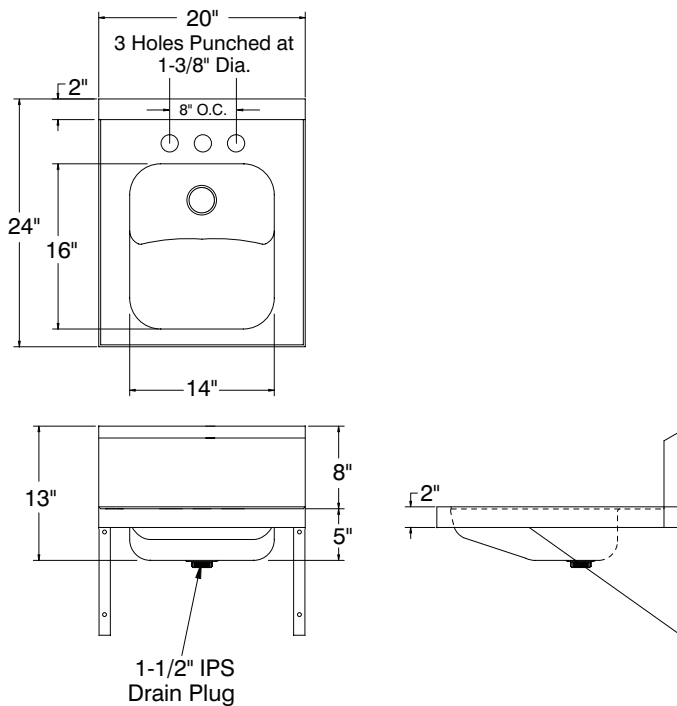
7-PS-25



7-PS-26



7-PS-75



MINISPLIT UNIT



SSU11,12,13,14,15,30

ENGINEERS COMMENTS:
NO EXCEPTION TAKEN

Submittal Data Sheet

1-1/4 Ton Slim Duct Built-in Concealed Ceiling Unit - CDXS15LVJU

Project: The Block At Enchanted Hills

Submitted by: Tadeo Herrera of VARITEC SOLUTION - ALBUQUERQUE on 12/22/2022

Submitted to: No Engineer Name Specified

Tags: IND 13, IND 14, IND 15, IND 16, IND 17, IND 28

FEATURES

- IR controller included
- Air filter (prefilter)
- External Static Pressure .12inAq
- Hot start technology
- Auto-restart (after power failure)

BENEFITS

- Quiet operation
- 12 year limited parts and compressor warranty with online registration
- 5 Year limited parts warranty for commercial applications





ENGINEERS COMMENTS:
NO EXCEPTION TAKEN

Submittal Data Sheet

1-1/4 Ton Slim Duct Built-in Concealed Ceiling Unit - CDXS15LVJU

Project: The Block At Enchanted Hills

Submitted by: Tadeo Herrera of VARITEC SOLUTION - ALBUQUERQUE on 12/22/2022

Submitted to: No Engineer Name Specified

Tags: IND 13, IND 14, IND 15, IND 16, IND 17, IND 28

PERFORMANCE

Indoor Unit Model No.	CDXS15LVJU	Indoor Unit Name:	1-1/4 Ton Slim Duct Built-in Concealed Ceiling Unit
Type:	Ducted	Rated Cooling Conditions:	Indoor (°F DB/WB): 80 / 67 Ambient (°F DB/WB): 95 / 75
Rated Cooling Capacity (Btu/hr):		Rated Heating Conditions:	Indoor (°F DB/WB): 70 / 60 Ambient (°F DB/WB): 47 / 43
Sensible Capacity (Btu/hr):		Rated Piping Length(ft):	25
Cooling Input Power (kW):		Rated Height Separation (ft):	0

INDOOR UNIT DETAILS

Power Supply (V/Hz/Ph):	208-230 / 60 / 1	Airflow Rate (H/M/L/SL) (CFM):	424/388/353/297
Power Supply Connections:	See Outdoor Unit for Electrical Specs	Moisture Removal (Gal/hr):	
Min. Circuit Amps MCA (A):		Gas Pipe Connection (inch):	1/2
Max Overcurrent Protection (MOP) (A):		Liquid Pipe Connection (inch):	1/4
Dimensions (HxWxD) (in):	7-7/8 x 35-7/16 x 24-7/16	Condensate Connection (inch):	25/32
Net Weight (lb):	60	Sound Pressure (H/M/L/SL) (dBA):	37/35/33/31
Ext. Static Pressure (Rated/Max) (inWg):	0.1 / 0.16	Sound Power Level (dBA):	

ENGINEERS COMMENTS:
NO EXCEPTION TAKEN

Submittal Data Sheet

1-1/4 Ton Slim Duct Built-in Concealed Ceiling Unit - CDXS15LVJU

Project: The Block At Enchanted Hills

Submitted by: Tadeo Herrera of VARITEC SOLUTION - ALBUQUERQUE on 12/22/2022

Submitted to: No Engineer Name Specified

Tags: IND 13, IND 14, IND 15, IND 16, IND 17, IND 28

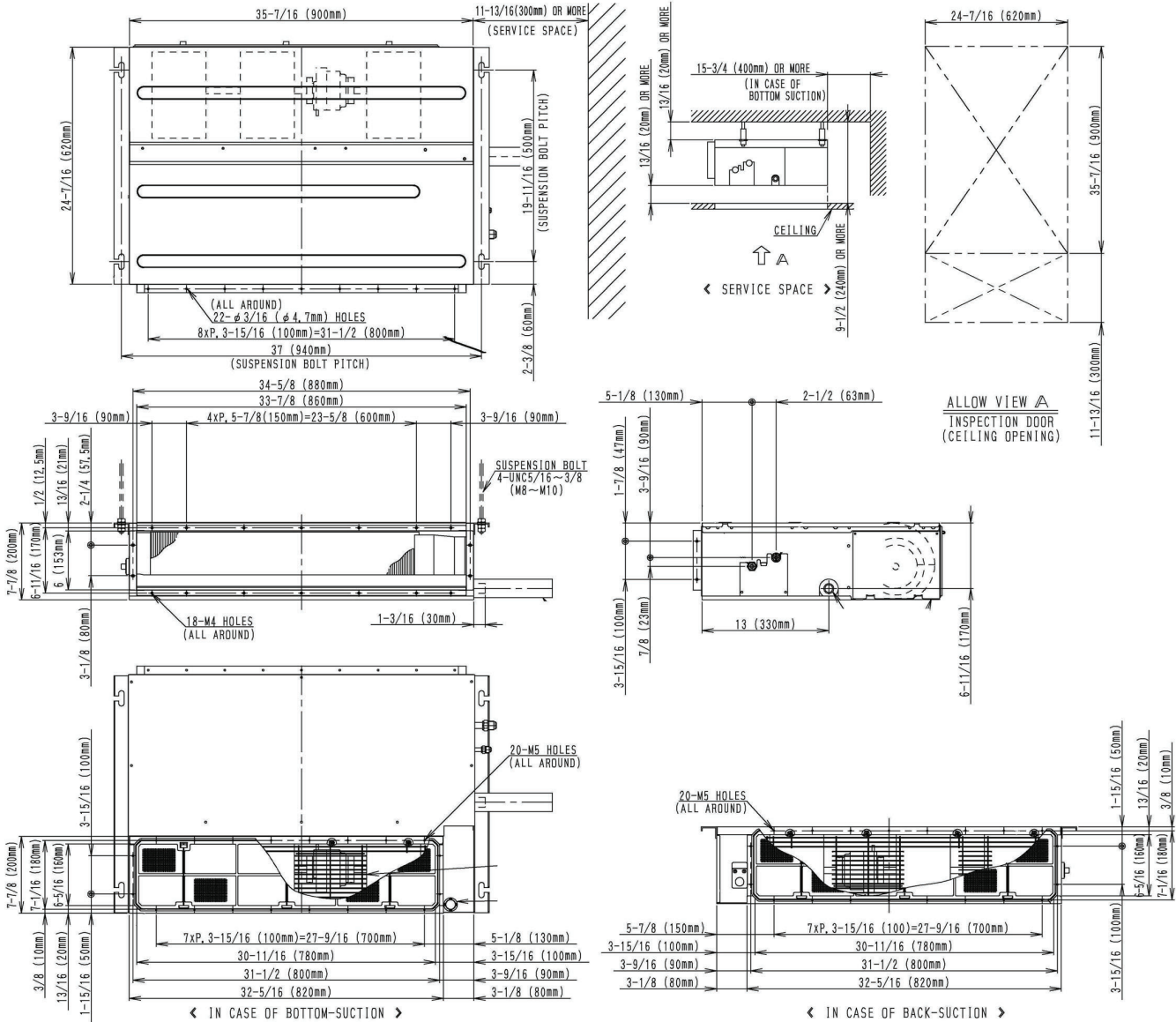
DIMENSIONAL DRAWING

CDXS15_18LVJU

Ductwork Opening:

Model No.	Supply Opening		Return Opening	
	Height	Width	Height	Width
CDXS15,18LVJU	6-11/16"	34-5/8"	7-1/16"	31-1/2"

(Note: Opening dimension base on Fixing Hole Center)



WATER HEATER

PLUMBING FIXTURE SUBMITTAL COVER SHEET

PROJECT: THE BLOCK AT ENCHANTED HILLS

SYSTEM: PLUMBING FIXTURES

SYMBOL: WHO2

ITEM: TANKLESS WATER HEATER

MANUFACTURER: EEMAX

MODEL: SPEX3512T

NOTE:

- THERMOSTATIC ELECTRIC TANKLESS WATER HEATER
- 3.5 KW 120 V

CONTRACTOR: HANNA PLUMBING & HEATING CO. INC.
8025 EDITH BLVD. NE
ALBUQUERQUE, NEW MEXICO 87113

PHONE: 505 898-4536

VENDOR PART	VENDOR	DESCRIPTION	PAGE
SPEX3512T	Eemax	Thermostatic Electric Tankless Water Heater (3.5KW 120 V)	62

LavAdvantage™

Thermostatic Heater Ideal for Handwashing and Other Fixed or Variable Flow Applications

Specifications

Electric Tankless Water Heater

Applications

- Handwashing
- Kitchen/bar/utility sinks
- Fixed or variable flow
- Ideal for multiple sensor or metering faucets
- Eyewash fountains (EE models - 90°F max)
- Sanitation (S models - 180°F)

Performance Features

- Self-diagnostics with intelligent controls actively protect heater in installed environment
- SafeStart™ technology engages upon start-up to help avoid dry-fire occurrence
- Industry's lowest activation with 0.2 GPM turn on flow
- Digital LED display with accessible user interface communicates system status and heater operation feedback
- Silent operation on all models except for SPEX012240T
- Mounts in any orientation for a flexible installation
- Compact size fits almost anywhere; suitable for ADA compliant facilities
- Only one input line, hot or cold, needed for an easy installation
- Designed to deliver hot water to a single pipe faucet, mixing valves or mixing faucets
- Integral 3/8" compression fittings; no soldering or sweat connections required
- No T&P relief valve needed (check local codes); Ready to go, right out-of-the-box
- Save water and time by installing unit at the point-of-use
- Control system activates heater only on demand
- High temperature limit switch enables safe operation
- Active energy management with power modulation allows for thermostatic accuracy
- 5-year limited warranty on leaks, 1-year on parts

Product Specifications

Dimensions:	9.75" x 5.25" x 3"
Weight:	4 lb
Cover:	ABS-UL rated 94 V-0
Color:	White
Adj. Temperature Range:	70°F-140°F*
Min. Dynamic Operating Pressure:	35 PSI
Max. Dynamic Operating Pressure:	150 PSI
Element:	Replaceable Nichrome cartridge insert
Fittings:	3/8" compression fittings
UL listed file number:	E86887

U.S. Patent #'s: 4,762,980 and 4,960,976

Special Design Service

Inquiries for units for unique applications are welcome.
Call our Technical Service department at **1-800-543-6163**.



Tested and certified by the Water Quality Association against NSF/ANSI 372 for lead free compliance.



Note: For optimum performance, mounting location should be located within 2 feet of fixture.

Suggested Specification

Tankless water heater shall be an Eemax LavAdvantage model number SPEX_____.

Unit shall have ABS-UL 94 V-0 rated cover. Unit shall have 0.2 GPM turn on. Unit shall allow mounting in any direction. Element shall be replaceable cartridge insert. Unit shall have replaceable filter in the inlet connector. Element shall be iron free, Nickel Chrome material. Tankless water heater to utilize complex algorithm, actively managing power application to real time system demand. Integrated flow meter, along with inlet and outlet temperature sensors provide data which allows the unit to instantly adapt to variations in input parameters. Heater shall be fitted with 3/8" compression fittings to eliminate need for soldering. Maximum operating pressure of 150 PSI. Accessible diagnostic features to include error/fault display. Hot water storage tanks prohibited. Unit shall be Eemax or approved equal.

Tankless water heater user interface must have the following capabilities:

- Selectable display including Celsius /Fahrenheit, setpoint, flow rate, inlet temperature outlet temperature, power factor
- Capable of displaying flow rate in gallons per minute & liters per minute
- Diagnostic features to include error/fault display
- Control board must maintain error/fault history of 5 events

Specification options to be included with SPEX models:

- ___ **EE** Emergency Eyewash. Meets ANSI tepid water requirements. Factory set to 90°F. Max temp. 90°F.
- ___ **ML** Multiple Lavatory. Factory set to 110°F. Max temp. 110°F.
- ___ **S** Sanitation. Factory set to 120°F. Max temp. 180°F.
- ___ **N4** NEMA 4 steel cabinet with powder coat finish
- ___ **N4X** NEMA 4 stainless steel, corrosion-resistant cabinet

*Special settings available, see specification options

Information and product specifications contained in this document are subject to change without notice. REV 2019-02

LavAdvantage

Thermostatic Heater Ideal for Handwashing and Other Fixed or Variable Flow Applications

Specifications

Electric Tankless Water Heater

					TEMPERATURE RISE °F				
MODEL NUMBER		KW	AMPS	RECOM'D WIRE SIZE (75° C/CU)	TURN ON (GPM)	0.35 GPM	0.5 GPM	1.0 GPM	2.0 GPM
VOLTS 120									
C	SPEX1812T	1.8	15	14 AWG	0.2	35°	25°	12°	6°
C	SPEX1812T EE	1.8	15	14 AWG	0.2	35°	25°	12°	6°
C	SPEX1812T S	1.8	15	14 AWG	0.2	35°	25°	12°	6°
C	SPEX2412T	2.4	20	14 AWG	0.2	47°	33°	16°	8°
C	SPEX2412T EE	2.4	20	14 AWG	0.2	47°	33°	16°	8°
C	SPEX2412T S	2.4	20	14 AWG	0.2	47°	33°	16°	8°
C	SPEX3012T	3.0	25	12 AWG	0.2	59°	41°	20°	10°
C	SPEX3012T EE	3.0	25	12 AWG	0.2	59°	41°	20°	10°
C	SPEX3012T S	3.0	25	12 AWG	0.2	59°	41°	20°	10°
C	SPEX3512T	3.5	29	10 AWG	0.2	68°	48°	24°	12°
C	SPEX3512T EE	3.5	29	10 AWG	0.2	†	48°	24°	12°
C	SPEX3512T ML	3.5	29	10 AWG	0.2	68°	48°	24°	12°
C	SPEX3512T S	3.5	29	10 AWG	0.2	68°	48°	24°	12°
VOLTS 240*									
C	SPEX35T	3.5	15	14 AWG	0.2	68°	48°	24°	12°
C	SPEX35T (derated 208V perf.)	2.7	13	14 AWG	0.2	53°	37°	18°	9°
C	SPEX35T EE	3.5	15	14 AWG	0.2	†	48°	24°	12°
C	SPEX35T ML	3.5	15	14 AWG	0.2	68°	48°	24°	12°
C	SPEX35T S	3.5	15	14 AWG	0.2	68°	48°	24°	12°
C	SPEX48T	4.8	20	14 AWG	0.2	94°	66°	33°	16°
C	SPEX48T (derated 208V perf.)	3.6	17	14 AWG	0.2	70°	49°	25°	12°
C	SPEX48T EE	4.8	20	14 AWG	0.2	†	†	33°	16°
C	SPEX48T ML	4.8	20	14 AWG	0.2	94°	66°	33°	16°
C	SPEX48T S	4.8	20	14 AWG	0.2	94°	66°	33°	16°
C	SPEX55T	5.5	23	12 AWG	0.2	107°	75°	38°	19°
C	SPEX55T (derated 208V perf.)	4.1	20	12 AWG	0.2	80°	56°	28°	14°
C	SPEX55T EE	5.5	23	12 AWG	0.2	†	†	38°	19°
C	SPEX55T ML	5.5	23	12 AWG	0.2	107°	75°	38°	19°
C	SPEX55T S	5.5	23	12 AWG	0.2	107°	75°	38°	19°
C	SPEX65T	6.5	27	12 AWG	0.2	†	89°	44°	22°
C	SPEX65T (derated 208V perf.)	4.9	24	12 AWG	0.2	96°	67°	33°	17°
C	SPEX65T EE	6.5	27	12 AWG	0.2	†	†	44°	22°
C	SPEX65T ML	6.5	27	12 AWG	0.2	†	89°	44°	22°
C	SPEX65T S	6.5	27	12 AWG	0.2	127°	89°	44°	22°
C	SPEX75T	7.5	32	10 AWG	0.2	†	102°	51°	26°
C	SPEX75T (derated 208V perf.)	5.6	27	10 AWG	0.2	109°	76°	38°	19°
C	SPEX75T EE	7.5	32	10 AWG	0.2	†	†	51°	26°
C	SPEX75T ML	7.5	32	10 AWG	0.2	†	102°	51°	26°
C	SPEX75T S	7.5	32	10 AWG	0.2	146°	102°	51°	26°
C	SPEX95T	9.5	40	8 AWG	0.2	†	†	65°	32°
C	SPEX95T (derated 208V perf.)	7.0	34	8 AWG	0.2	†	96°	48°	24°
C	SPEX95T EE	9.5	40	8 AWG	0.2	†	†	†	32°
C	SPEX95T ML	9.5	40	8 AWG	0.2	†	†	65°	32°
C	SPEX95T S	9.5	40	8 AWG	0.2	†	130°	65°	32°
C	SPEX012240T	11.5	48	8 AWG	0.2	†	†	79°	39°
C	SPEX012240T (derated 208V perf.)	8.7	42	8 AWG	0.2	†	†	59°	30°
C	SPEX012240T EE	11.5	48	8 AWG	0.2	†	†	†	39°
C	SPEX012240T ML	11.5	48	8 AWG	0.2	†	†	79°	39°
C	SPEX012240T S	11.5	48	8 AWG	0.2	†	†	79°	39°

* 240V units can be used on 208V single phase with 25% reduced temperature output. Please note per UL standards the rating plate and installation instructions will all be according to a 240V applied voltage. Check with local officials prior to derating the electrical infrastructure.

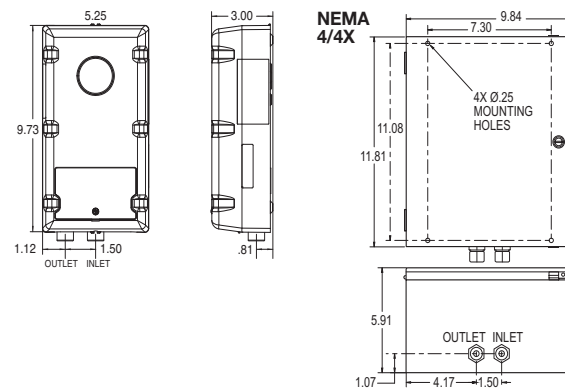
† Temperature electronically limited to factory preset not to exceed temperature.

"C" indicates evaluation and compliance to either Underwriters Laboratories (UL) or Intertek (ETL) under CAV CSA-C22.2 No. 64/No. 88.

					TEMPERATURE RISE °F			
MODEL NUMBER	KW	AMPS	RECOM'D WIRE SIZE (75° C/CU)	TURN ON (GPM)	0.35 GPM	0.5 GPM	1.0 GPM	2.0 GPM
VOLTS 208 Single Phase								
C SPEX3208T	3.0	15	14 AWG	0.2	59°	41°	20°	10°
C SPEX3208T ML	3.0	15	14 AWG	0.2	59°	41°	20°	10°
C SPEX4208T	4.1	20	14 AWG	0.2	80°	56°	28°	14°
C SPEX4208T EE	4.1	20	14 AWG	0.2	†	56°	28°	14°
C SPEX4208T ML	4.1	20	14 AWG	0.2	80°	56°	28°	14°
C SPEX4208T S	4.1	20	14 AWG	0.2	80°	56°	28°	14°
C SPEX8208T	8.3	40	8 AWG	0.2	†	†	57°	28°
C SPEX8208T EE	8.3	40	8 AWG	0.2	†	†	57°	28°
C SPEX8208T ML	8.3	40	8 AWG	0.2	†	†	57°	28°
C SPEX8208T S	8.3	40	8 AWG	0.2	†	113°	57°	28°
VOLTS 277 Single Phase								
C SPEX3277T	3.0	11	14 AWG	0.2	59°	41°	20°	10°
C SPEX3277T EE	3.0	11	14 AWG	0.2	59°	41°	20°	10°
C SPEX3277T ML	3.0	11	14 AWG	0.2	59°	41°	20°	10°
C SPEX3277T S	3.0	11	14 AWG	0.2	59°	41°	20°	10°
C SPEX4277T	4.1	15	14 AWG	0.2	80°	56°	28°	14°
C SPEX4277T EE	4.1	15	14 AWG	0.2	†	56°	28°	14°
C SPEX4277T ML	4.1	15	14 AWG	0.2	80°	56°	28°	14°
C SPEX4277T S	4.1	15	14 AWG	0.2	80°	56°	28°	14°
C SPEX60T	6.0	22	12 AWG	0.2	†	82°	41°	20°
C SPEX60T EE	6.0	22	12 AWG	0.2	†	†	41°	20°
C SPEX60T ML	6.0	22	12 AWG	0.2	†	82°	41°	20°
C SPEX60T S	6.0	22	12 AWG	0.2	117°	82°	41°	20°
C SPEX80T	8.0	29	10 AWG	0.2	†	109°	55°	27°
C SPEX80T EE	8.0	29	10 AWG	0.2	†	†	55°	27°
C SPEX80T ML	8.0	29	10 AWG	0.2	†	109°	55°	27°
C SPEX80T S	8.0	29	10 AWG	0.2	†	109°	55°	27°
C SPEX90T	9.0	33	10 AWG	0.2	†	†	61°	31°
C SPEX90T EE	9.0	33	10 AWG	0.2	†	†	†	31°
C SPEX90T ML	9.0	33	10 AWG	0.2	†	†	61°	31°
C SPEX90T S	9.0	33	10 AWG	0.2	†	123°	61°	31°
C SPEX100T	10.0	36	8 AWG	0.2	†	†	68°	34°
C SPEX100T EE	10.0	36	8 AWG	0.2	†	†	†	34°
C SPEX100T ML	10.0	36	8 AWG	0.2	†	†	68°	34°
C SPEX100T S	10.0	36	8 AWG	0.2	†	137°	68°	34°

Suffix Definitions

EE Meets ANSI Z358.1 tepid water requirements. Max. temperature 90°F
ML Multi lavs 0.2 turn on with 110° temp setting
S Sanitation not to exceed 180°



Information and product specifications contained in this document are subject to change without notice. REV 2019-02