

RETAIL SITE AVAILABLE

PROPERTY PHOTO

3140 CERRILLOS RD, SANTA FE 87507



BENEFITS

- Signalized corner on Cerrillos Rd
- Pylon sign on Santa Fe's busiest retail corridor
- Loading dock
- Expanding population growth in the area
- Close proximity to Walmart, Home Depot, Lowes, and many more

LEASE RATE

- See broker

AVAILABLE:

- ±28,000 SF

PARKING RATIO

- ±179 Stalls/6.67 stalls per ±1,000 SF

TOTAL LAND AREA

- ±3.8 ACRE

2024 DEMOGRAPHICS

| | 5 MIN | 10 MIN | 15 MIN |
|------------------------|----------|----------|----------|
| Est. Population | 14,451 | 39,338 | 72,614 |
| Est. Households | 4,787 | 14,804 | 28,905 |
| Est. Avg HH Income | \$65,346 | \$71,513 | \$80,144 |
| Est. Daytime Employees | 1,767 | 15,534 | 31,174 |

THIS INFORMATION HAS BEEN OBTAINED FROM SOURCES BELIEVED RELIABLE. WE HAVE NOT VERIFIED IT AND MAKE NO GUARANTEE, WARRANTY OR REPRESENTATION ABOUT IT. ANY PROJECTIONS, OPINIONS, ASSUMPTIONS OR ESTIMATES USED ARE FOR EXAMPLE ONLY AND DO NOT REPRESENT THE CURRENT OR FUTURE PERFORMANCE OF THE PROPERTY. YOU AND YOUR ADVISORS SHOULD CONDUCT A CAREFUL, INDEPENDENT INVESTIGATION OF THE PROPERTY TO DETERMINE TO YOUR SATISFACTION THE SUITABILITY OF THE PROPERTY FOR YOUR NEEDS.

ANTHONY JOHNSON

505.456.6371

AJ@PEGASUSGROUPNM.COM

AJ JOHNSON

505-456-6372

AJJOHNSON@PEGASUSGROUPNM.COM

RETAIL SITE AVAILABLE SITE PHOTOS

3140 CERRILLOS RD, SANTA FE 87507

O | C
ORUM CAPITAL



PEGASUS
GROUP

XTEAM
RETAIL ADVISORS



THIS INFORMATION HAS BEEN OBTAINED FROM SOURCES BELIEVED RELIABLE. WE HAVE NOT VERIFIED IT AND MAKE NO GUARANTEE, WARRANTY OR REPRESENTATION ABOUT IT. ANY PROJECTIONS, OPINIONS, ASSUMPTIONS OR ESTIMATES USED ARE FOR EXAMPLE ONLY AND DO NOT REPRESENT THE CURRENT OR FUTURE PERFORMANCE OF THE PROPERTY. YOU AND YOUR ADVISORS SHOULD CONDUCT A CAREFUL, INDEPENDENT INVESTIGATION OF THE PROPERTY TO DETERMINE TO YOUR SATISFACTION THE SUITABILITY OF THE PROPERTY FOR YOUR NEEDS.

ANTHONY JOHNSON

505.456.6371

AJ@PEGASUSGROUPNM.COM

| AJ JOHNSON

505-456-6372

AJJOHNSON@PEGASUSGROUPNM.COM

RETAIL SITE AVAILABLE SITE LAYOUT

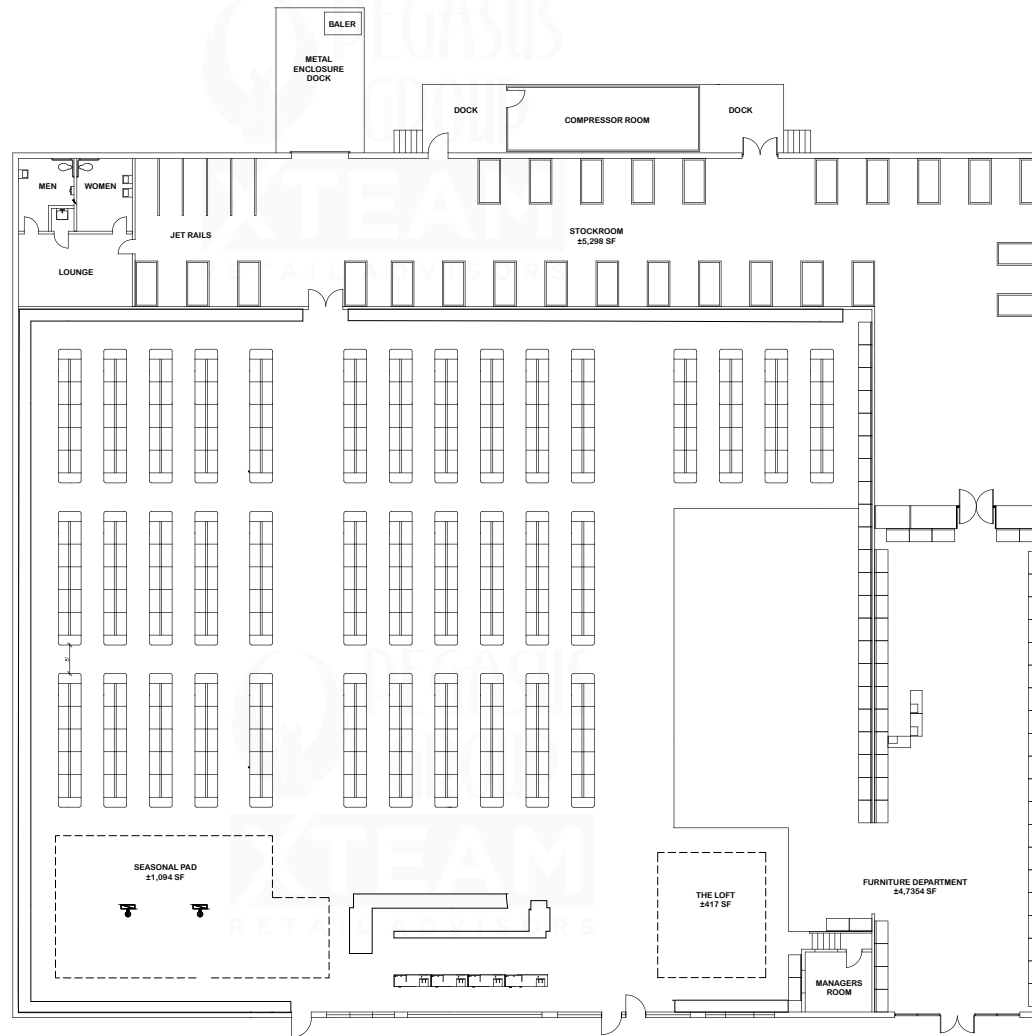
3140 CERRILLOS RD, SANTA FE 87507

O | C
ORUM CAPITAL



PEGASUS
GROUP

XTEAM
RETAIL ADVISORS



THIS INFORMATION HAS BEEN OBTAINED FROM SOURCES BELIEVED RELIABLE. WE HAVE NOT VERIFIED IT AND MAKE NO GUARANTEE, WARRANTY OR REPRESENTATION ABOUT IT. ANY PROJECTIONS, OPINIONS, ASSUMPTIONS OR ESTIMATES USED ARE FOR EXAMPLE ONLY AND DO NOT REPRESENT THE CURRENT OR FUTURE PERFORMANCE OF THE PROPERTY. YOU AND YOUR ADVISORS SHOULD CONDUCT A CAREFUL, INDEPENDENT INVESTIGATION OF THE PROPERTY TO DETERMINE TO YOUR SATISFACTION THE SUITABILITY OF THE PROPERTY FOR YOUR NEEDS.

ANTHONY JOHNSON

505.456.6371

AJ@PEGASUSGROUPNM.COM

| AJ JOHNSON

505-456-6372

AJJOHNSON@PEGASUSGROUPNM.COM

RETAIL SITE AVAILABLE

SITE AERIAL

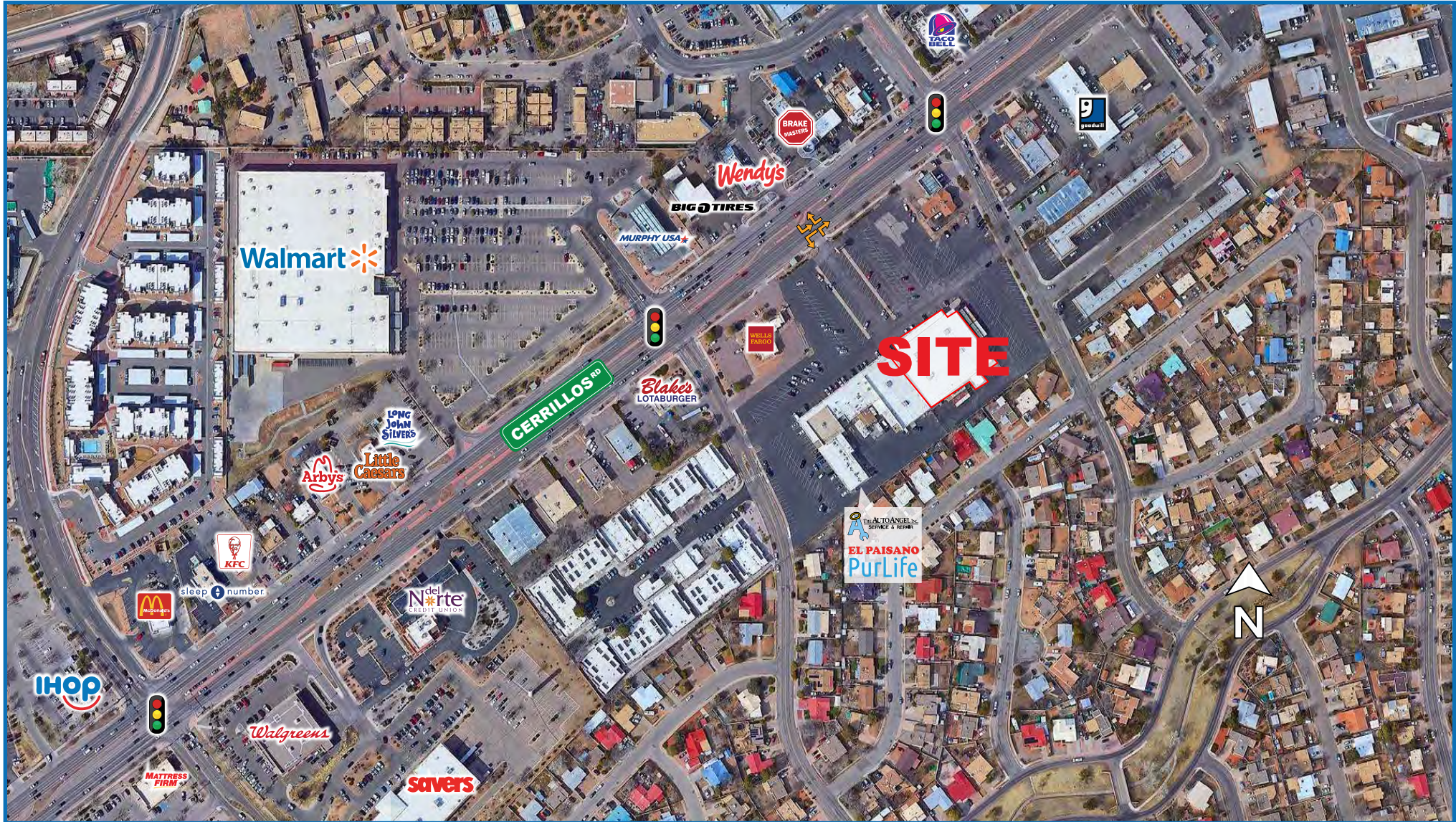
3140 CERRILLOS RD, SANTA FE 87507

O | C
ORUM CAPITAL



PEGASUS
GROUP

XTEAM
RETAIL ADVISORS



THIS INFORMATION HAS BEEN OBTAINED FROM SOURCES BELIEVED RELIABLE. WE HAVE NOT VERIFIED IT AND MAKE NO GUARANTEE, WARRANTY OR REPRESENTATION ABOUT IT. ANY PROJECTIONS, OPINIONS, ASSUMPTIONS OR ESTIMATES USED ARE FOR EXAMPLE ONLY AND DO NOT REPRESENT THE CURRENT OR FUTURE PERFORMANCE OF THE PROPERTY. YOU AND YOUR ADVISORS SHOULD CONDUCT A CAREFUL, INDEPENDENT INVESTIGATION OF THE PROPERTY TO DETERMINE TO YOUR SATISFACTION THE SUITABILITY OF THE PROPERTY FOR YOUR NEEDS.

ANTHONY JOHNSON

505.456.6371

AJ@PEGASUSGROUPNM.COM

| AJ JOHNSON

505-456-6372

AJJOHNSON@PEGASUSGROUPNM.COM

RETAIL SITE AVAILABLE TRADE AREA

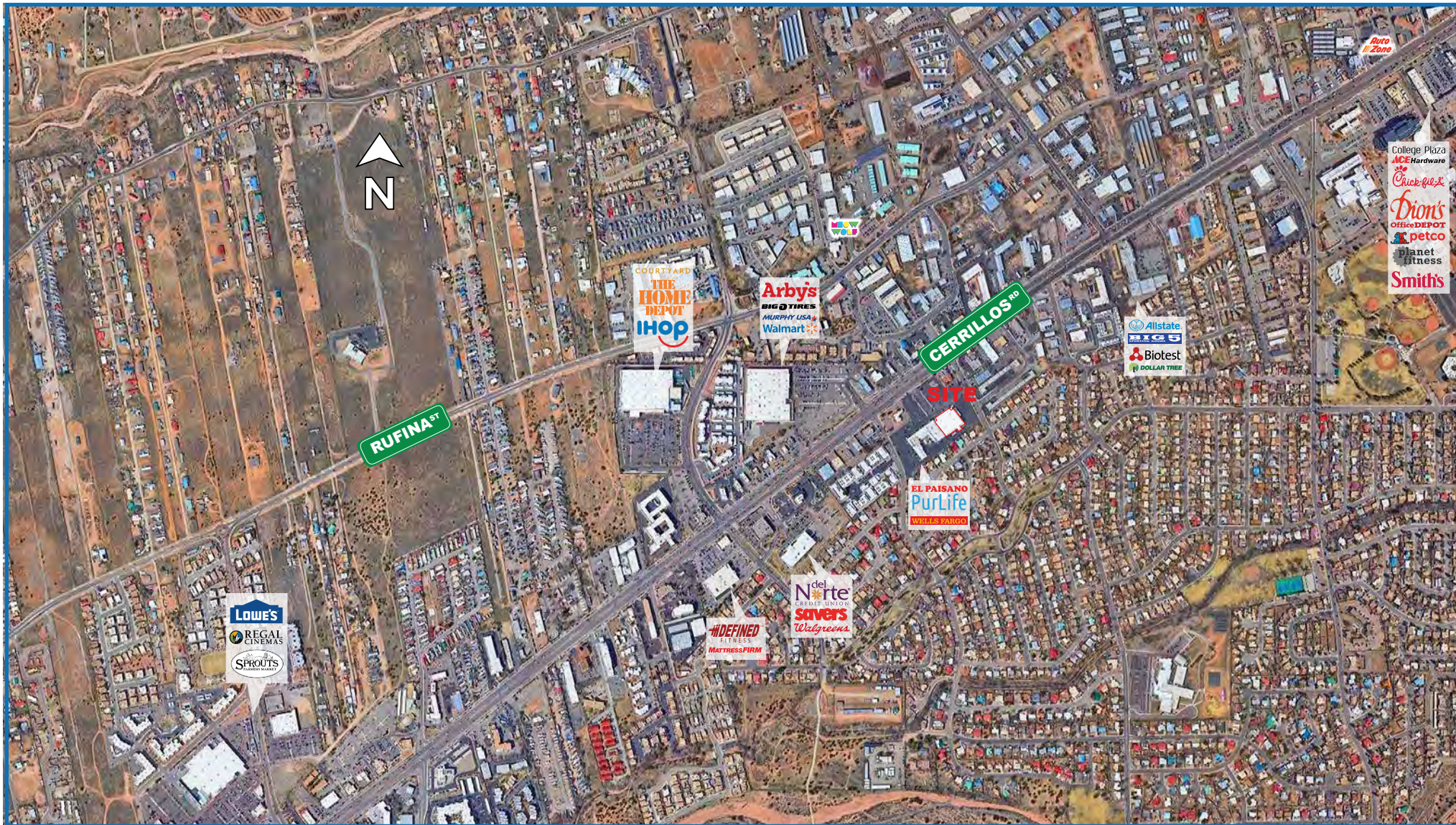
3140 CERRILLOS RD, SANTA FE 87507

O | C
ORUM CAPITAL



PEGASUS
GROUP

XTEAM
RETAIL ADVISORS



THIS INFORMATION HAS BEEN OBTAINED FROM SOURCES BELIEVED RELIABLE. WE HAVE NOT VERIFIED IT AND MAKE NO GUARANTEE, WARRANTY OR REPRESENTATION ABOUT IT. ANY PROJECTIONS, OPINIONS, ASSUMPTIONS OR ESTIMATES USED ARE FOR EXAMPLE ONLY AND DO NOT REPRESENT THE CURRENT OR FUTURE PERFORMANCE OF THE PROPERTY. YOU AND YOUR ADVISORS SHOULD CONDUCT A CAREFUL, INDEPENDENT INVESTIGATION OF THE PROPERTY TO DETERMINE TO YOUR SATISFACTION THE SUITABILITY OF THE PROPERTY FOR YOUR NEEDS.

ANTHONY JOHNSON

505.456.6371

AJ@PEGASUSGROUPNM.COM

| AJ JOHNSON

505-456-6372

AJJOHNSON@PEGASUSGROUPNM.COM

RETAIL SITE AVAILABLE

POPULATION DATA

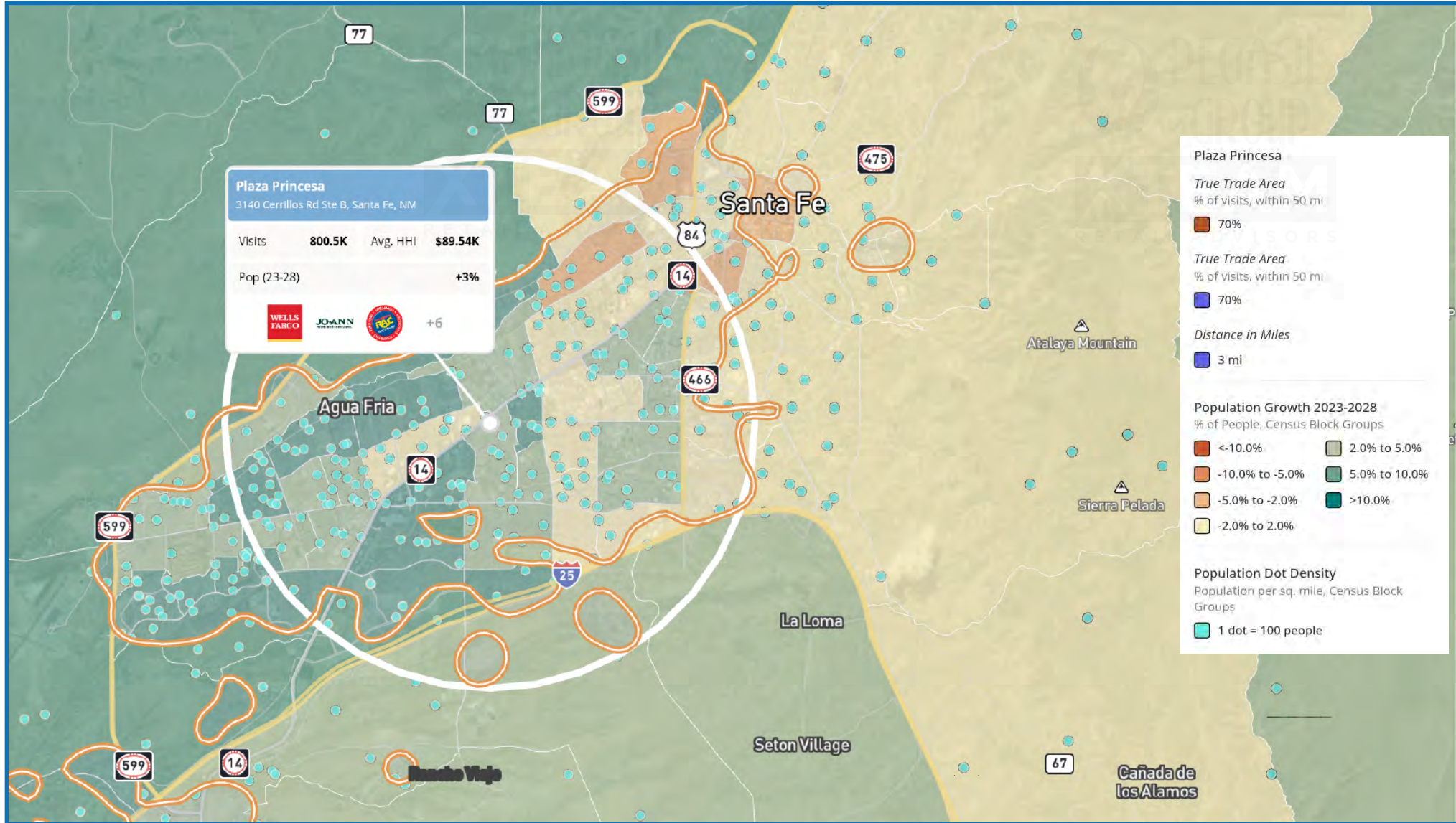
3140 CERRILLOS RD, SANTA FE 87507

O | C
ORUM CAPITAL



PEGASUS
GROUP

XTEAM
RETAIL ADVISORS



THIS INFORMATION HAS BEEN OBTAINED FROM SOURCES BELIEVED RELIABLE. WE HAVE NOT VERIFIED IT AND MAKE NO GUARANTEE, WARRANTY OR REPRESENTATION ABOUT IT. ANY PROJECTIONS, OPINIONS, ASSUMPTIONS OR ESTIMATES USED ARE FOR EXAMPLE ONLY AND DO NOT REPRESENT THE CURRENT OR FUTURE PERFORMANCE OF THE PROPERTY. YOU AND YOUR ADVISORS SHOULD CONDUCT A CAREFUL, INDEPENDENT INVESTIGATION OF THE PROPERTY TO DETERMINE TO YOUR SATISFACTION THE SUITABILITY OF THE PROPERTY FOR YOUR NEEDS.

ANTHONY JOHNSON

505.456.6371

AJ@PEGASUSGROUPNM.COM

| AJ JOHNSON

505-456-6372

AJJOHNSON@PEGASUSGROUPNM.COM

RETAIL SITE AVAILABLE

SITE DRIVE TIME/DEMOGRAPHICS

3140 CERRILLOS RD, SANTA FE 87507

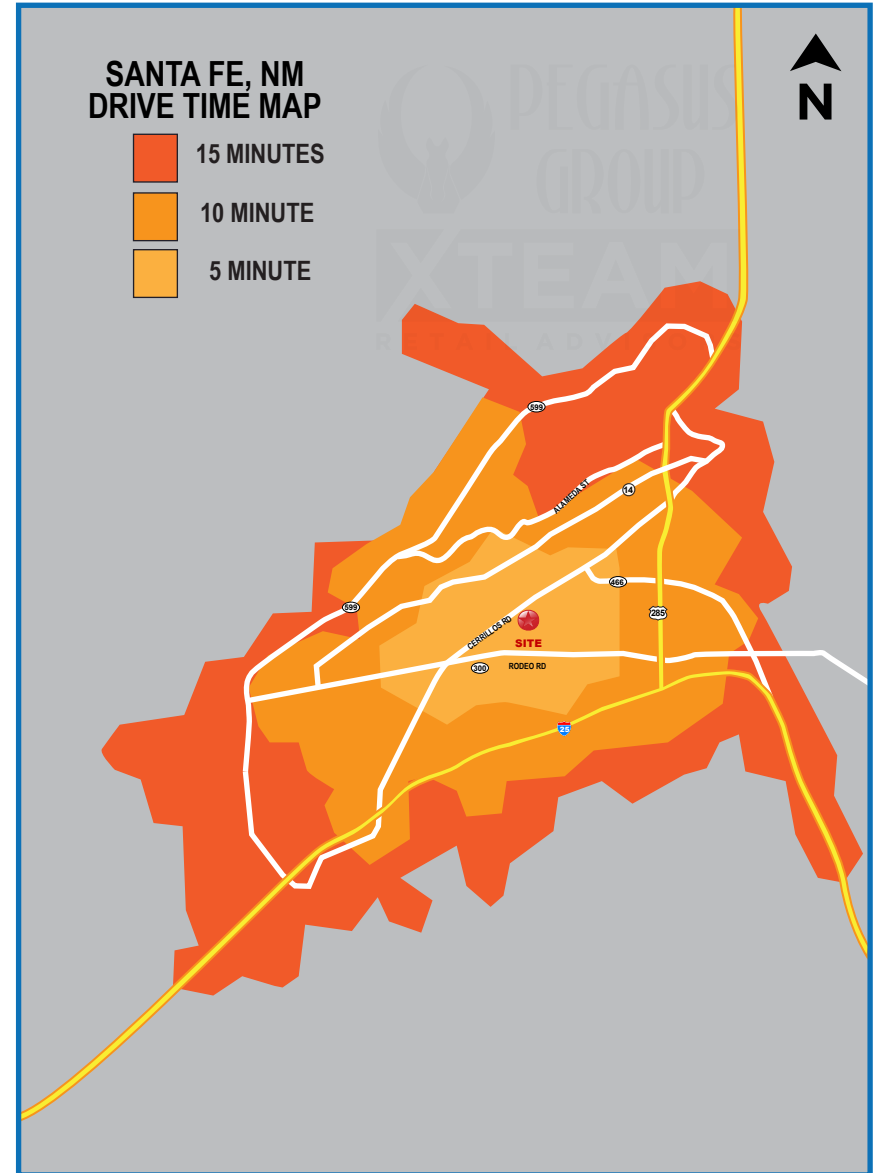
O | C
ORUM CAPITAL



PEGASUS
GROUP

XTEAM
RETAIL ADVISORS

| POPULATION | 5 MIN | 10 MIN | 15 MIN |
|---|----------|----------|-----------|
| 2024 ESTIMATED POPULATION | 19,799 | 64,349 | 88,361 |
| 2029 PROJECTED POPULATION | 19,872 | 64,915 | 88,995 |
| 2020 CENSUS POPULATION | 20,910 | 65,360 | 87,976 |
| 2010 CENSUS POPULATION | 19,139 | 59,765 | 80,154 |
| PROJECTED ANNUAL GROWTH 2024 TO 2029 | - | 0.2% | 0.1% |
| HISTORICAL ANNUAL GROWTH 2010 TO 2024 | 0.2% | 0.5% | 0.7% |
| HOUSEHOLDS | | | |
| 2024 ESTIMATED HOUSEHOLDS | 9,043 | 29,045 | 40,748 |
| 2029 PROJECTED HOUSEHOLDS | 9,079 | 29,200 | 40,965 |
| 2020 CENSUS HOUSEHOLDS | 8,935 | 28,399 | 39,027 |
| 2010 CENSUS HOUSEHOLDS | 8,017 | 25,455 | 34,764 |
| PROJECTED ANNUAL GROWTH 2024 TO 2029 | - | 0.1% | 0.1% |
| HISTORICAL ANNUAL GROWTH 2010 TO 2024 | 0.9% | 1.0% | 1.2% |
| MEDIAN AGE | 43.8 4 | 44.7 | 46.0 |
| INCOME | | | |
| 2024 ESTIMATED AVERAGE HOUSEHOLD INCOME | \$73,251 | \$91,611 | \$101,878 |
| 2024 ESTIMATED MEDIAN HOUSEHOLD INCOME | \$55,762 | \$68,882 | \$75,195 |
| 2024 ESTIMATED PER CAPITA INCOME | \$33,617 | \$41,497 | \$47,114 |
| RACE & ETHNICITY | | | |
| 2024 ESTIMATED WHITE | 56.5% | 57.3% | 58.7% |
| 2024 ESTIMATED BLACK OR AFRICAN AMERICAN | 1.7% | 1.6% | 1.6% |
| 2024 ESTIMATED ASIAN OR PACIFIC ISLANDER | 1.6% | 2.0% | 2.1% |
| 2024 ESTIMATED AMERICAN INDIAN OR NATIVE ALASKAN | 2.5% | 2.2% | 2.2% |
| 2024 ESTIMATED OTHER RACES | 37.6% | 36.9% | 35.5% |
| 2024 ESTIMATED HISPANIC | 51.6% | 50.5% | 49.3% |
| EDUCATION | | | |
| 2024 ESTIMATED ELEMENTARY (GRADE LEVEL 0 TO 8) | 8.0% | 6.7% | 5.5% |
| 2024 ESTIMATED SOME HIGH SCHOOL (GRADE LEVEL 9 TO 11) | 5.1% | 5.1% | 4.6% |
| 2024 ESTIMATED HIGH SCHOOL GRADUATE | 4.4% | 22.6% | 20.9% |
| 2024 ESTIMATED SOME COLLEGE | 20.9% | 19.3% | 19.2% |
| 2024 ESTIMATED ASSOCIATES DEGREE ONLY | 10.4% | 8.1% | 7.7% |
| 2024 ESTIMATED BACHELORS DEGREE ONLY | 19.0% 2 | 0.7% | 21.2% |
| 2024 ESTIMATED GRADUATE DEGREE | 12.2% | 17.5% | 20.9% |
| BUSINESS | | | |
| 2024 ESTIMATED TOTAL BUSINESSES | 1,906 | 5,479 | 8,522 |
| 2024 ESTIMATED TOTAL EMPLOYEES | 14,097 | 42,957 | 67,334 |



THIS INFORMATION HAS BEEN OBTAINED FROM SOURCES BELIEVED RELIABLE. WE HAVE NOT VERIFIED IT AND MAKE NO GUARANTEE, WARRANTY OR REPRESENTATION ABOUT IT. ANY PROJECTIONS, OPINIONS, ASSUMPTIONS OR ESTIMATES USED ARE FOR EXAMPLE ONLY AND DO NOT REPRESENT THE CURRENT OR FUTURE PERFORMANCE OF THE PROPERTY. YOU AND YOUR ADVISORS SHOULD CONDUCT A CAREFUL, INDEPENDENT INVESTIGATION OF THE PROPERTY TO DETERMINE TO YOUR SATISFACTION THE SUITABILITY OF THE PROPERTY FOR YOUR NEEDS.

ANTHONY JOHNSON

505.456.6371

AJ@PEGASUSGROUPNM.COM

| AJ JOHNSON

505-456-6372

AJJOHNSON@PEGASUSGROUPNM.COM