



# FOR LEASE

**2531 Jefferson St. NE, Suite 130**  
Albuquerque, NM 87110



The information contained herein is believed to be reliable, however Johnson Commercial Real Estate LC makes no warranty, representation or guarantee as to its accuracy. Interested parties should conduct its own investigations to determine the suitability of its intended use for the property.

## Jefferson - Towner Flex/Office/Retail Space for Lease

### LOCATION

- Midtown Business Center
- Northeast Heights Corridor

### AVAILABLE

- Suite 130 - 960± SF

### ZONING

- NR-C, Non-Residential Commercial

### LEASE RATE

- \$720.00/Month
- \$220.00/Month NNN
- \$940.00/Month Total

### FEATURES

- Small, Hard to Find Space
- Located One Block South of Menaul on Jefferson
- Easy Access to I-40
- Minutes from Uptown

### CONTACT

**Mark Friedman**

NM Lic. 35421

Mobile (505) 250-5796

mark@jcrenm.com

**Derek Mitchell**

NM Lic. 48551

Mobile (505) 353-2055

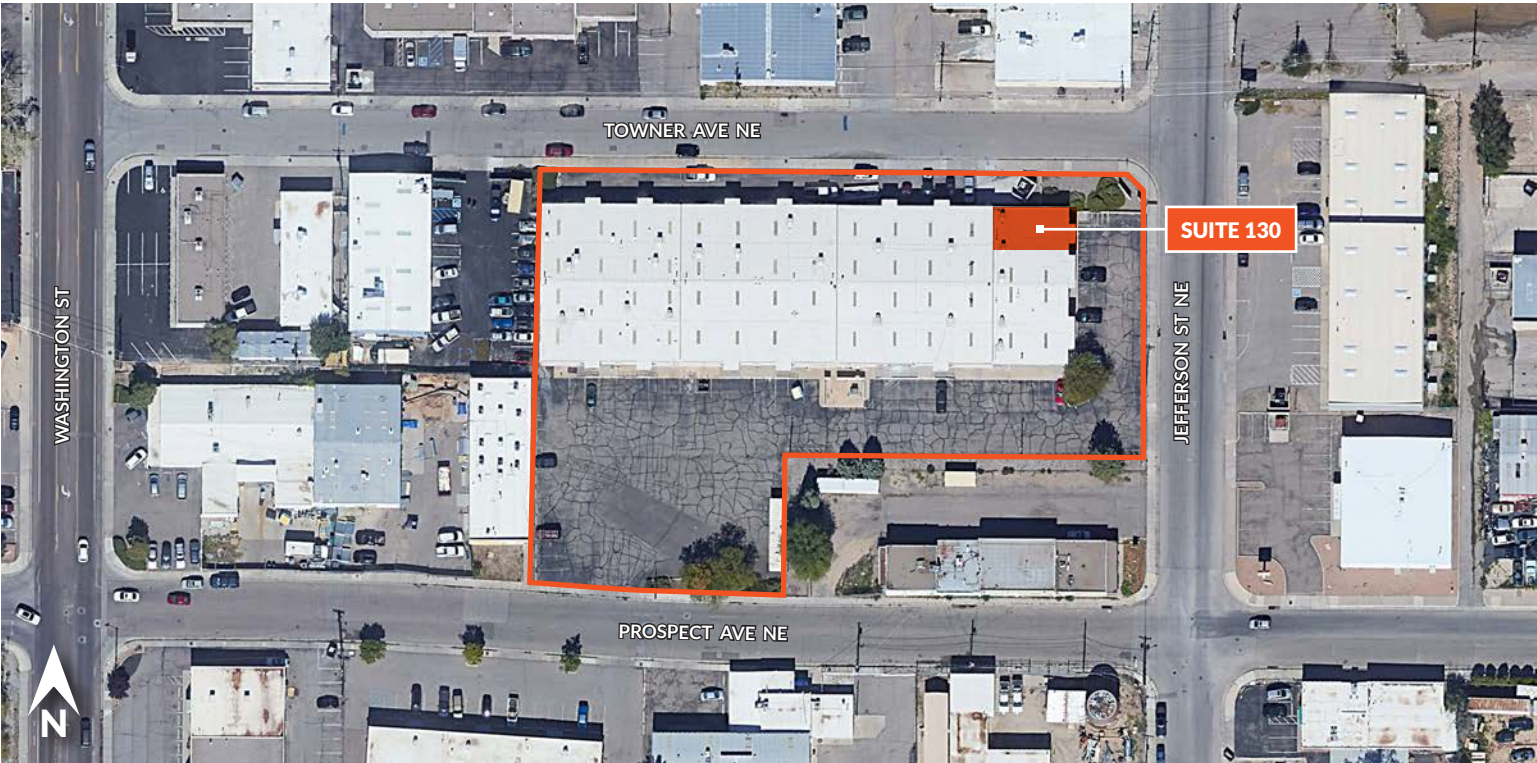
derek@jcrenm.com

**JOHNSON**  
Commercial Real Estate  
(505) 831-3333 ■ jcrenm.com

4811 Hardware Dr NW, Suite C-5, Albuquerque, NM 87109

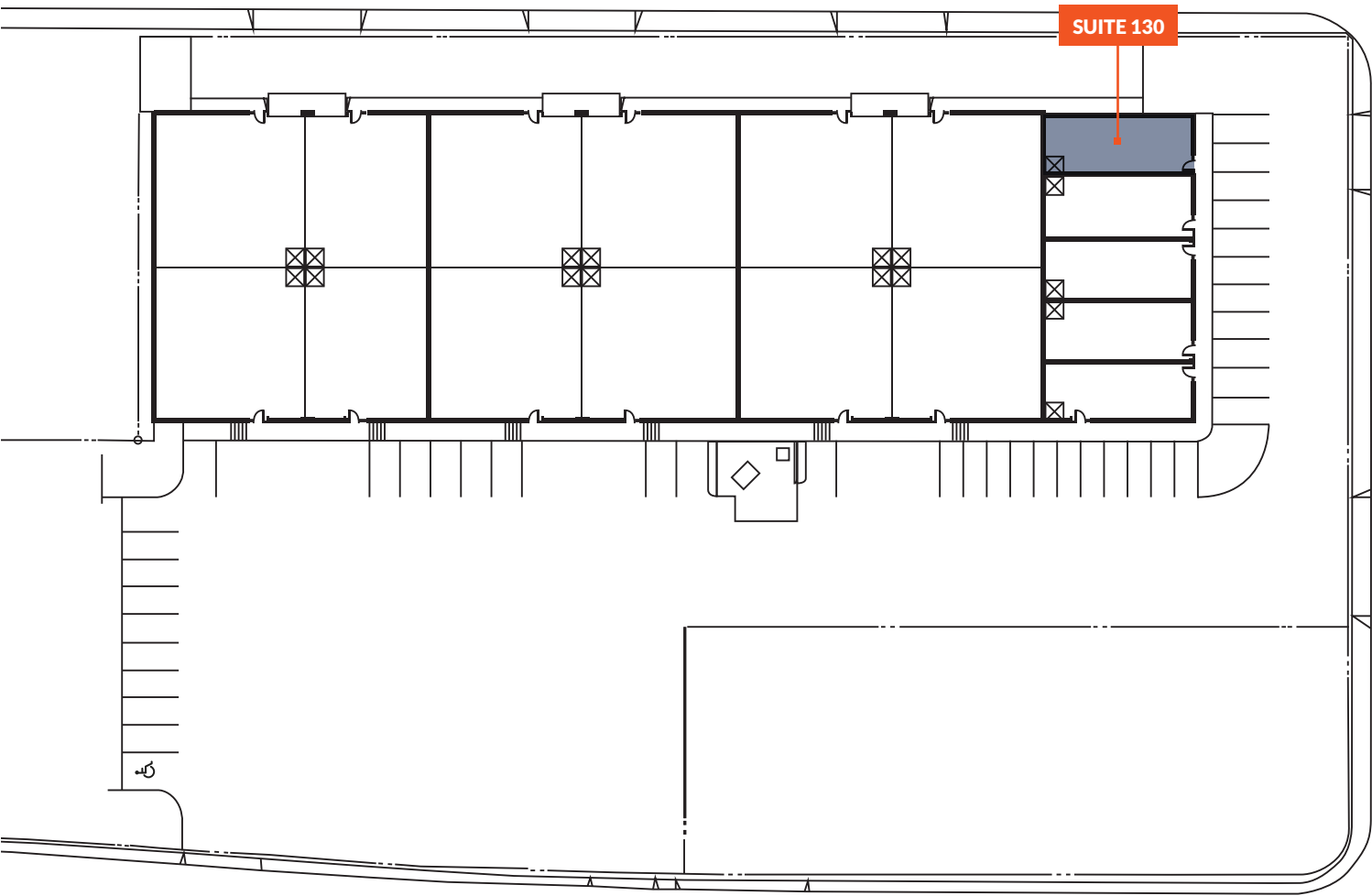


# Aerial Map





# Site Plan





# Floor Plan

