

For Sale

Restaurant, Bar, Hotel & Banquet Hall

HISTORIC LANDMARK DATING BACK TO THE LATE 1800'S



AN AUTHENTIC PIECE OF OLD WEST HISTORY!

101 4th St. | Chama, NM 87520

**±10,407 SF on ±0.4 Ac.
Available**

NAI SunVista] **Got Space™**

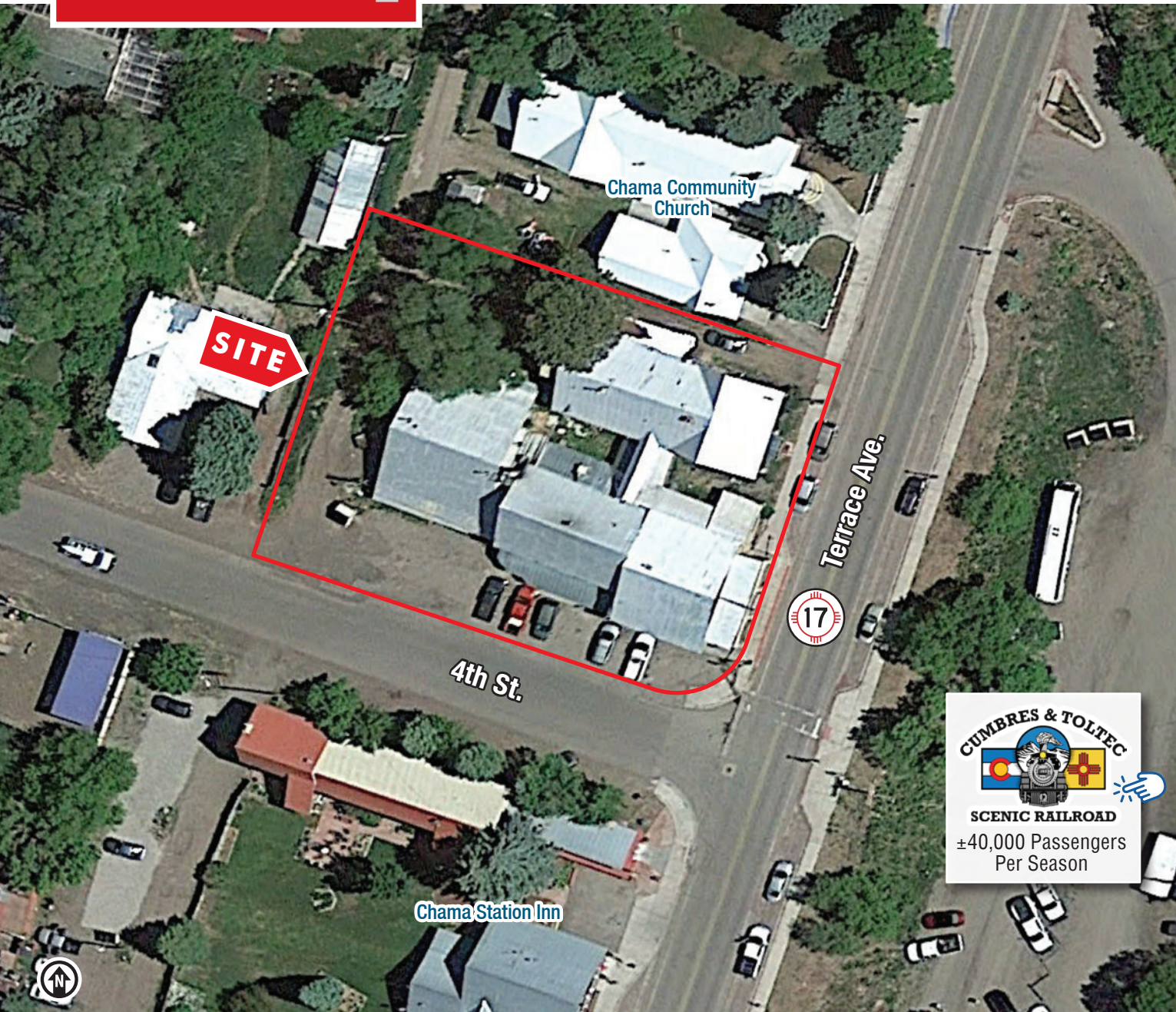
Opening the Door to Commercial Real Estate Excellence

Lauren Landavazo

lauren@sunvista.com | 505 227 0585

For Sale

101 4th St. | Chama, NM 87520



PROPERTY

AVAILABLE

Building: $\pm 10,407$ SF
Land: ± 0.4 Acres

SALE PRICE

\$800,000

HIGHLIGHTS

- All-in-one hospitality package under one roof:
 - Restaurant & Bar
 - Hotel
 - Banquet Hall
- Includes full liquor license
- FF&E Included
- Prime location directly across from the world-famous [Cumbres & Toltec Scenic Railroad](#) 🚂
- Endless potential to revitalize and restore a beloved Chama landmark
- On the National Register of Historic Places

VISITORS

- Chama receives an average of 677,000 visitors annually, $\pm 276,000$ of those being tourists from outside the market area

For Sale

101 4th St. | Chama, NM 87520



NAI SunVista

505 878 0001 | sunvista.com
2424 Louisiana Blvd. NE | Suite 100
Albuquerque, NM 87110

Lauren Landavazo
lauren@sunvista.com
505 227 0585

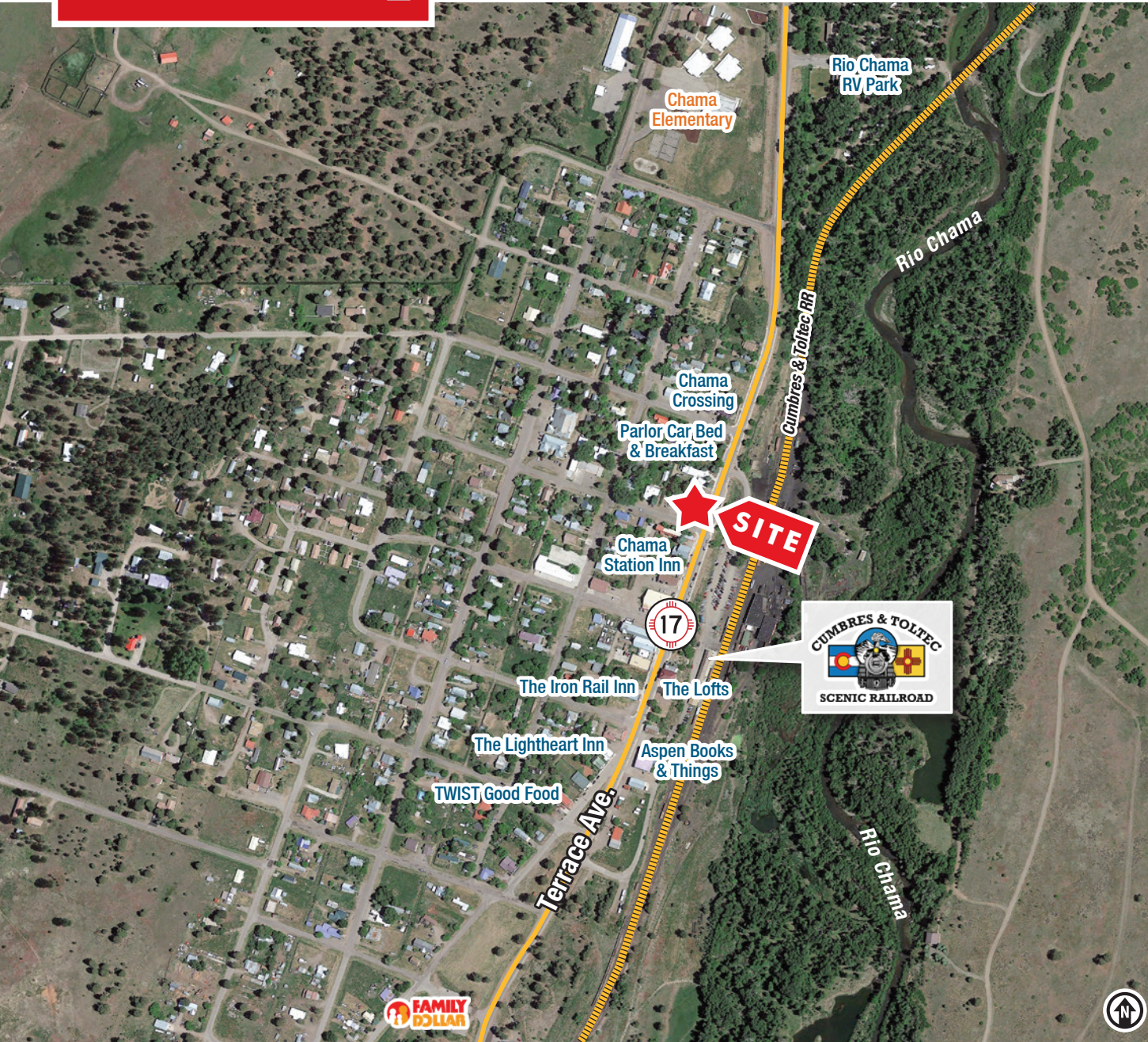
For Sale

101 4th St. | Chama, NM 87520



For Sale

101 4th St. | Chama, NM 87520

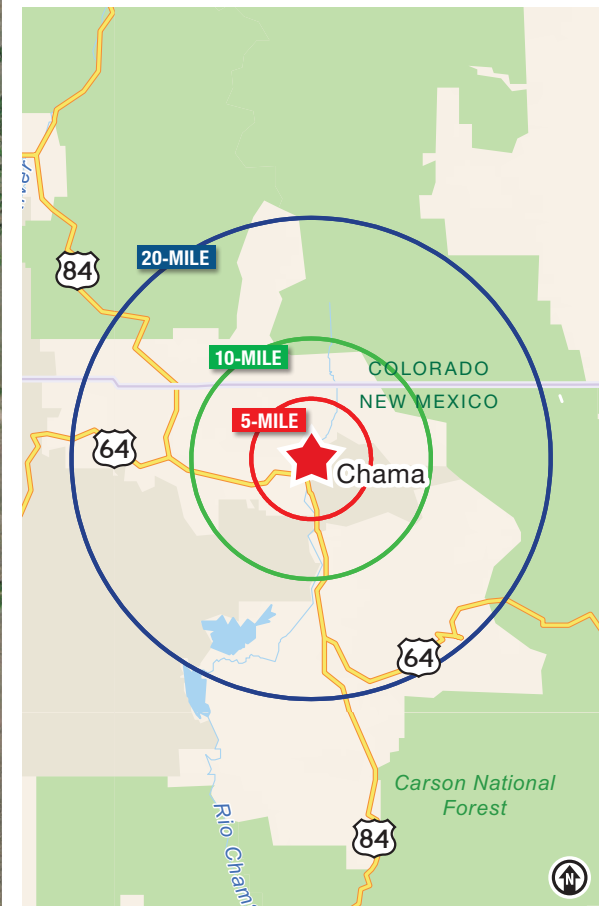


LOCATION

Demographics	5 Mile	10 Mile	20 Mile
Total Population	1,096	1,278	2,891
Average HH Income	\$63,181	\$69,261	\$102,338
Daytime Employment	583	596	1,127

2024 Forecasted by Esri

HUB Zone [MORE INFO](#)



NAISunVista

505 878 0001 | sunvista.com
2424 Louisiana Blvd. NE | Suite 100
Albuquerque, NM 87110

Lauren Landavazo

lauren@sunvista.com
505 227 0585

For Sale

101 4th St. | Chama, NM 87520



CHAMA | NEW MEXICO

One of the best-kept secrets in New Mexico is the enchanting Village of Chama. With an elevation of 7,860 feet, Chama is nestled high in the Southern Rockies, just 120 miles North of Santa Fe.

The historic Cumbres & Toltec Scenic Railroad steam trains leave the Chama depot daily from Memorial Day weekend to mid-October. Riding the railroad is a day trip of exhilarating rugged mountain views and fall colors.

Fishing local trout streams and lakes is a leisurely pleasure and for a real experience try Fly fishing the Rio Chama, which runs the east side of the Village. Hikers and mountain bikers find many trails including the Continental Divide Trail nearby. The Sargent's Wildlife Area surrounds Chama with meadows and trails for hiking and horseback riding. Hunting adventures with reliable guides are close to town.

Chama has a lively Western-style business district with lodging, RV Parks and cozy dining establishments. Located at the junction of highway 17 and U.S. 84 (Take State Hwy 285 north from Santa Fe to Española then take the "Chama Highway" (84) north) the Village of Chama is the perfect destination for anyone seeking scenic outdoor recreation.



Chama Annual Events

January	Chile Ski Classic, MLK JR. Weekend
February	Snoball Rally, Last Weekend
May	Opening Weekend for the Cumbres & Toltec
June	Chama Western Heritage Days, 2nd Weekend
July	4th of July Celebration
August	Chama Days, 2nd Weekend
September	Chama Valley Art Festival, Labor Day Weekend Chama Walk, Jog, and Wag, 3rd Weekend
December	Chama Christmas in the Mountains, 1st Weekend Cumbres & Toltec Christmas Trains

