

LEASE

RETAIL



1259 POST DR NE



PROPERTY HIGHLIGHTS

- Located in the Post Drive Retail Center off US 131 exit in the rapidly growing Belmont area, this 1,300 square foot space offers excellent visibility and foot traffic. Situated next to Dollar General and Flo's Restaurant, this location is ideal for retail, service, or hospitality businesses looking to establish a strong presence in a bustling community.
- Property Type: Neighborhood Retail
- Parking: 50 Asphalt spaces
- Zoning: C-2
- Year Built: 2005

LEASE RATE \$13.50 SF/YR (NNN)

Available SF:	1,950 SF
Building Size:	25,000 SF
Lot Size:	3.96 AC

DEMOGRAPHICS	1 MILE	3 MILES	5 MILES
Total Households	856	5,856	22,969
Total Population	2,271	16,073	58,191
Average HH Income	\$117,056	\$125,570	\$107,767

BRADLEY COMPANY
220 Lyon St. NW, Suite 400
Grand Rapids, MI 49503
616.254.0005

JEFF TUCKER
Senior Managing Director, Brokerage | Principal
616.881.9321
jtucker@bradleyco.com

CAROLYN BOJI
Advisor
616.213.4560
cboji@bradleyco.com



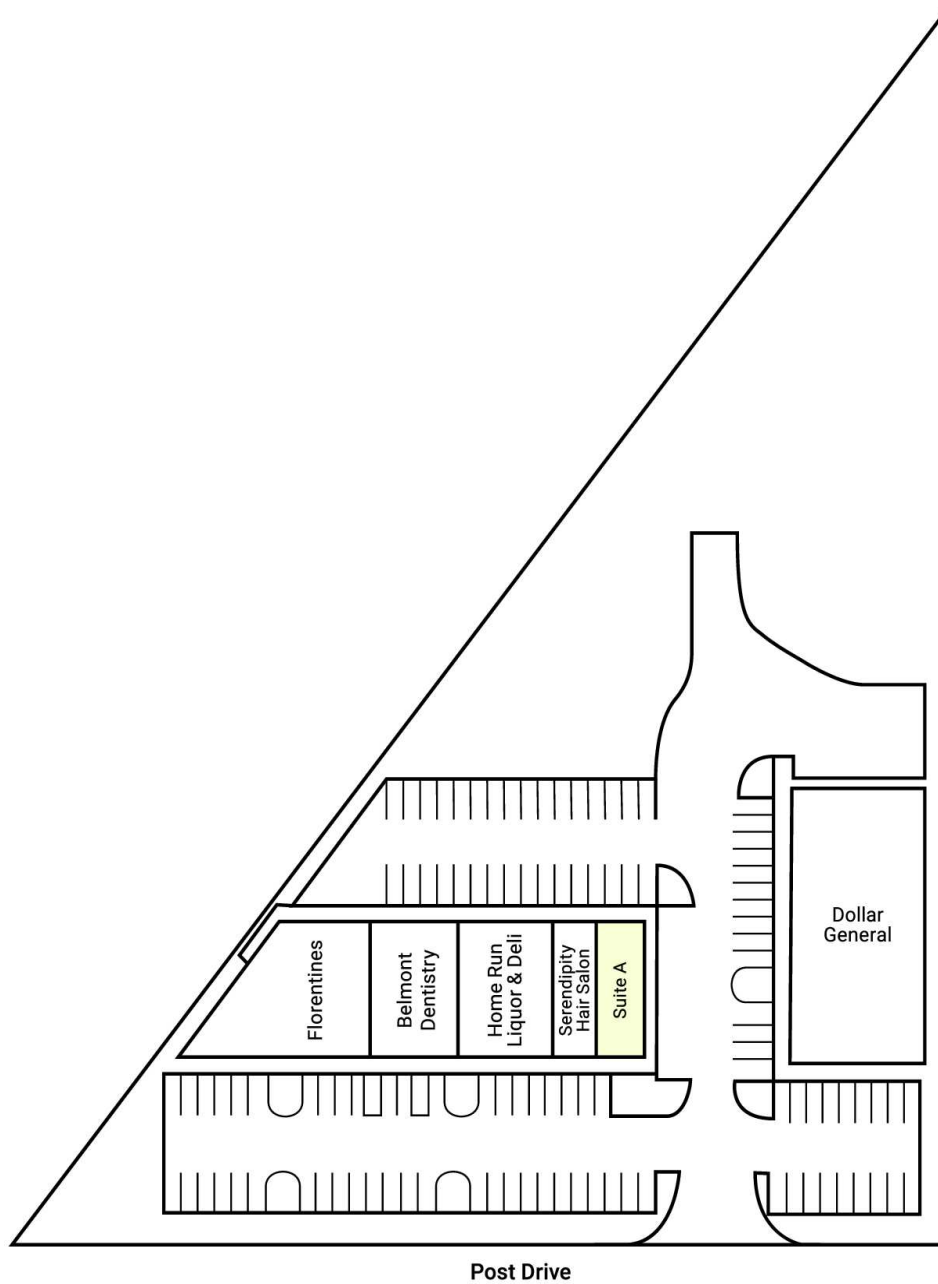
BRADLEYCO.COM



1259 POST DR NE, BELMONT, MI 49306

LEASE

RETAIL



Post Drive

JEFF TUCKER

Senior Managing Director, Brokerage | Principal
616.881.9321
jtucker@bradleyco.com

CAROLYN BOJI

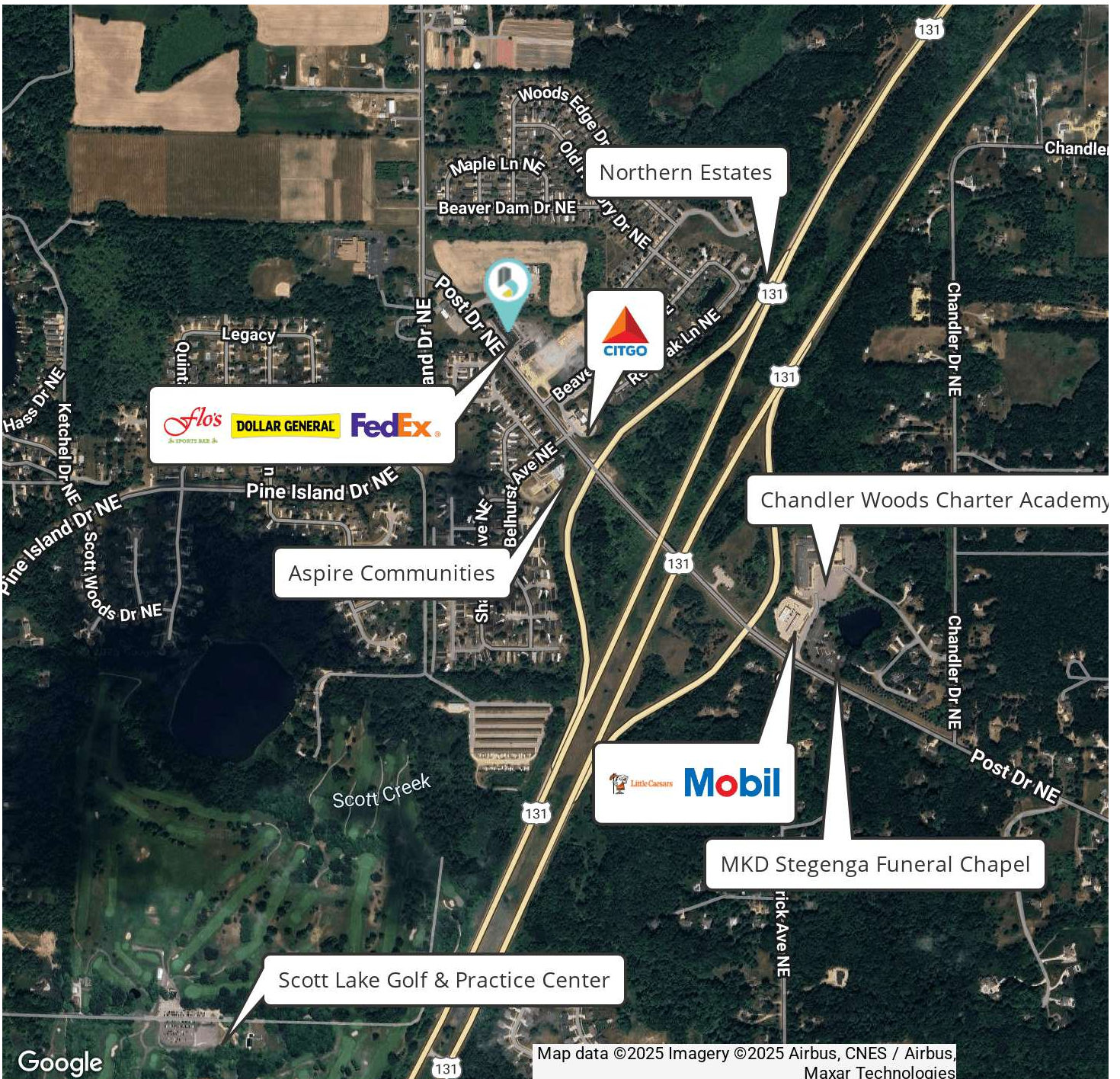
Advisor
616.213.4560
cboji@bradleyco.com



1259 POST DR NE, BELMONT, MI 49306

LEASE

RETAIL



JEFF TUCKER
Senior Managing Director, Brokerage | Principal
616.881.9321
jtucker@bradleyco.com

CAROLYN BOJI
Advisor
616.213.4560
cboji@bradleyco.com



ADDITIONAL PHOTOS

1259 POST DR NE, BELMONT, MI 49306

LEASE

RETAIL



JEFF TUCKER

Senior Managing Director, Brokerage | Principal
616.881.9321
jtucker@bradleyco.com

CAROLYN BOJI

Advisor
616.213.4560
cboji@bradleyco.com