

8474 MASON DRIVE
NEWAYGO, MICHIGAN

RETAIL/OFFICE/INDUSTRIAL FOR LEASE
2,220 Square Feet Available



**SIGNATURE
ASSOCIATES**
KNOW SIGNATURE | KNOW RESULTS



PROPERTY FEATURES

- 2,220 square feet available
- Zoned Commercial
- Freestanding building
- Building completely renovated in 2019
- Ample parking
- Lease Rate: \$10.00/sq. ft. NNN



For more information, please contact:

JOE PLASKEY
(248) 948 0110
jplaskey@signatureassociates.com

PETER CACHEY
(616) 235 6039
pcachey@signatureassociates.com

SIGNATURE ASSOCIATES
One Towne Square, Suite 1200
Southfield, MI 48076
www.signatureassociates.com

8474 Mason Drive – Newaygo, Michigan

Retail/Office/Industrial For Lease

2,220
Square Feet
AVAILABLE

Photos



For more information, please contact:

JOE PLASKEY
(248) 948 0110
jplaskey@signatureassociates.com

PETER CACHEY
(616) 235 6039
pcachey@signatureassociates.com

SIGNATURE ASSOCIATES
One Towne Square, Suite 1200
Southfield, MI 48076
www.signatureassociates.com

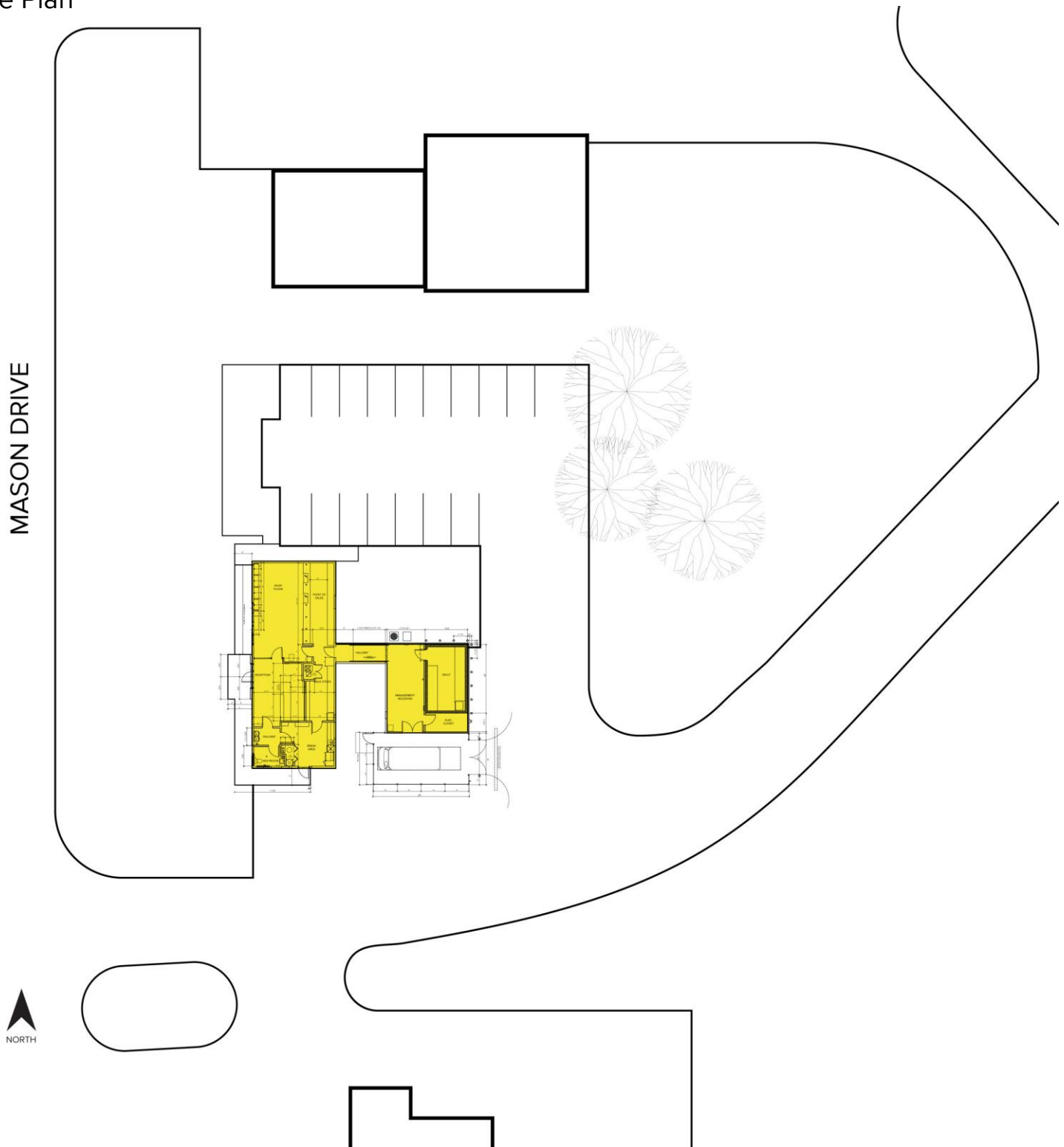
Information is subject to verification and no liability for errors or omissions is assumed. Price is subject to change and listing withdrawal.

8474 Mason Drive – Newaygo, Michigan

Retail/Office/Industrial For Lease

2,220
Square Feet
AVAILABLE

Site Plan



For more information, please contact:

JOE PLASKEY
(248) 948 0110
jplaskey@signatureassociates.com

PETER CACHEY
(616) 235 6039
pcachey@signatureassociates.com

SIGNATURE ASSOCIATES
One Towne Square, Suite 1200
Southfield, MI 48076
www.signatureassociates.com

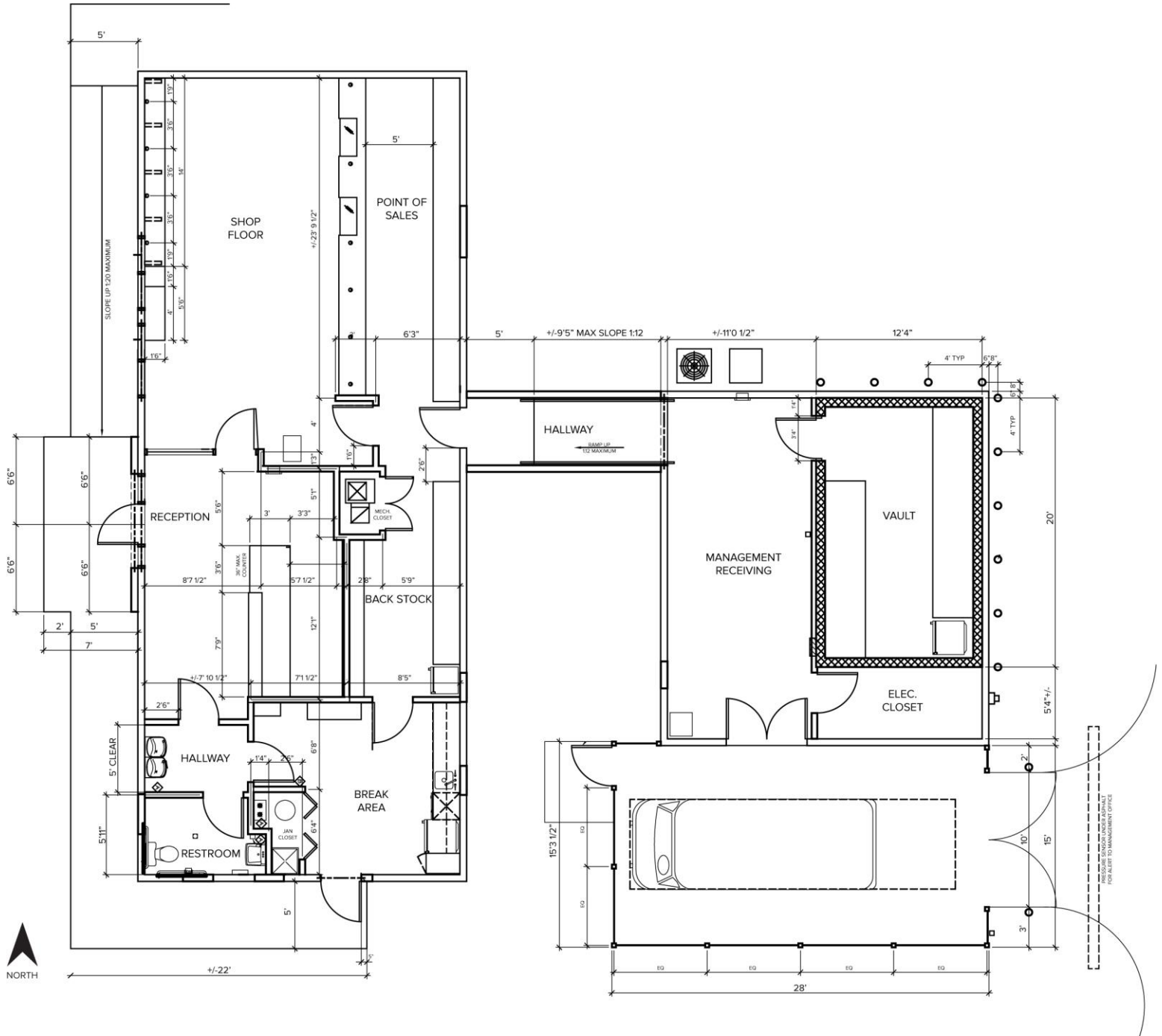
Information is subject to verification and no liability for errors or omissions is assumed. Price is subject to change and listing withdrawal.

8474 Mason Drive – Newaygo, Michigan

Retail/Office/Industrial For Lease

2,220
Square Feet
AVAILABLE

Floor Plan



For more information, please contact:

JOE PLASKEY
(248) 948 0110
jplaskey@signatureassociates.com

PETER CACHEY
(616) 235 6039
pcachey@signatureassociates.com

SIGNATURE ASSOCIATES
One Towne Square, Suite 1200
Southfield, MI 48076
www.signatureassociates.com

8474 Mason Drive – Newaygo, Michigan

Retail/Office/Industrial For Lease

2,220
Square Feet
AVAILABLE

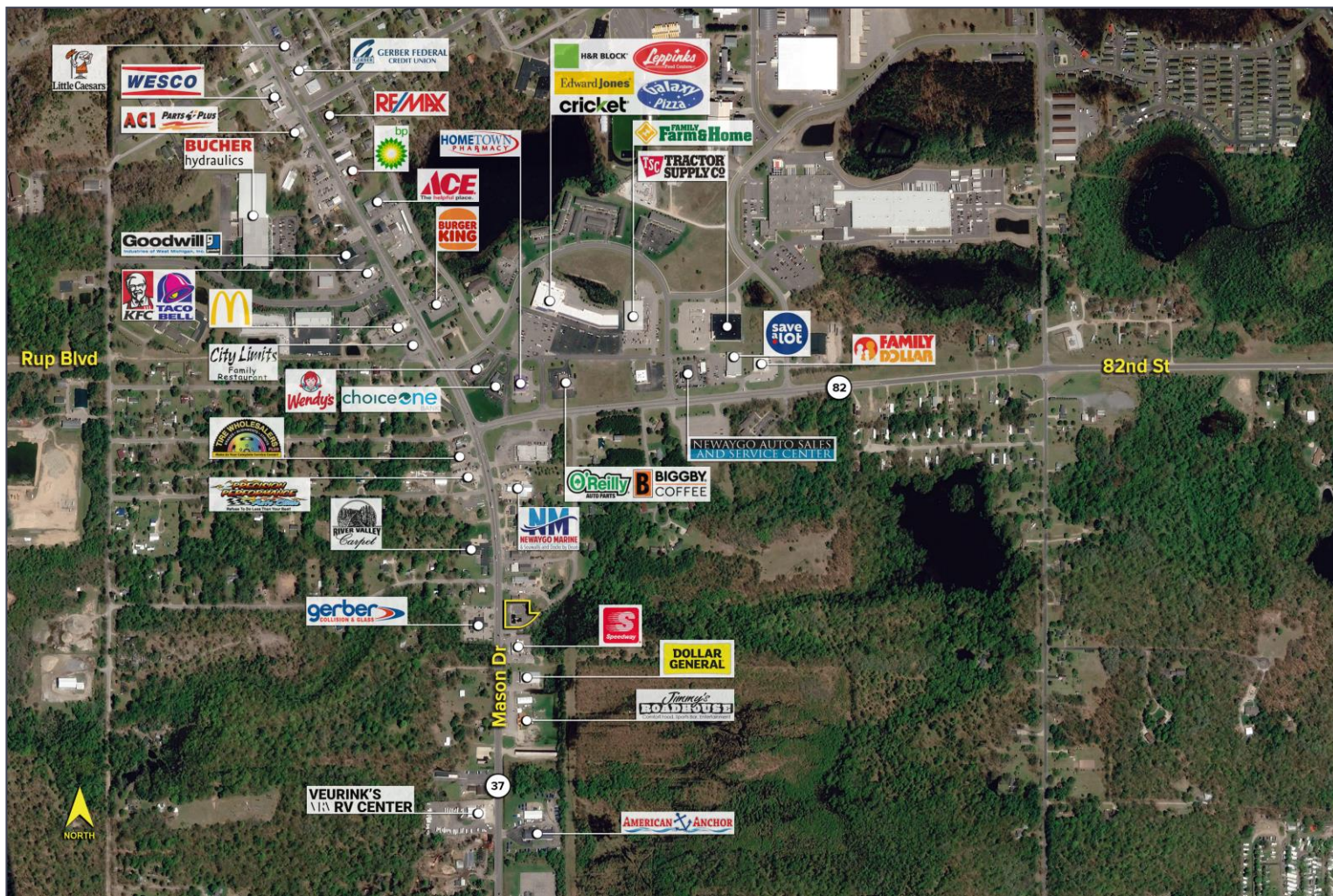


DEMOGRAPHICS

| | POPULATION | MED. HH INCOME |
|--------|------------|----------------|
| 1 MILE | 1,668 | \$53,179 |
| 3 MILE | 6,462 | \$64,701 |
| 5 MILE | 11,408 | \$65,688 |

TRAFFIC COUNTS (TWO-WAY)

| | |
|--------|--------------------------------------|
| 11,265 | Mason Dr. S. of Fredrick St. |
| 13,800 | Mason Dr. N. of Fredrick St. |
| 6,490 | 82 nd St. E. of Mason St. |



For more information, please contact:

JOE PLASKEY
(248) 948 0110
jplaskey@signatureassociates.com

PETER CACHEY
(616) 235 6039
pcachey@signatureassociates.com

SIGNATURE ASSOCIATES
One Towne Square, Suite 1200
Southfield, MI 48076
www.signatureassociates.com