

# FOR LEASE

9479 Riley Street  
Zeeland, MI 49464

Bridgewater Square is anchored by Family Fare and various shadow anchors. Four suites are available, Suite 205 is 1,700 SF, Suite 220 is 1,748 SF, Suite 245 is 1,600 SF, and Suite 365 is 2,500 SF. Take advantage of Family Fare's destination traffic of tens of thousands per week and the work population base of Zeeland's very successful industrial park including Gentex, Herman Miller, etc. as well as both Class A Zeeland High Schools. Join a nice regional and national tenant mix and bring your niche to the center.



MIKE NAGELKIRK  
• DIR +1 616 355 3151  
• MOB +1 616 836 1122  
• MIKE@LAKESHORECOMMERCIAL.COM

RETAIL  
1,600 - 2,500 SF

[www.LakeshoreCommercial.com](http://www.LakeshoreCommercial.com)

44 East 8th Street, Suite 510 | Holland, MI 49423 | 616.394.4500

FOR LEASE · 9479 Riley Street · Zeeland, MI 49464



## LISTING INFORMATION

Suite	205	220	245	365
Lease Price	\$12.50 + NNN	\$12.50 + NNN	\$12.50 + NNN	\$12.50 + NNN
Available SF	1,700 SF	1,748 SF	1,600 SF	2,500 SF
Monthly Price	\$1,771 + NNN	\$1,821 + NNN	\$1,666.67 + NNN	\$2,604.17 + NNN
Terms	60 Months	60 Months	60 Months	60 Months
Lease Type	Triple Net	Triple Net	Triple Net	Triple Net
Estimated NNN	\$4.50/SF	\$4.50/SF	\$4.50/SF	\$4.50/SF
Zoning	C			
Taxing Authority	Zeeland Charter Township			
County	Ottawa			



## PROPERTY HIGHLIGHTS

- Near big box stores, businesses, restaurants, etc
- Close proximity to Downtown Zeeland
- Next to Gentex Headquarters and Zeeland Industrial Park
- .4 Miles from Zeeland East & West High School
- 2024 AADT Traffic Counts

96th Ave - 13,149

Riley St - 15,040



FOR LEASE · 9479 Riley Street · Zeeland, MI 49464

## LOCATION DESCRIPTION

Riley Street East to 96th Avenue, North to address

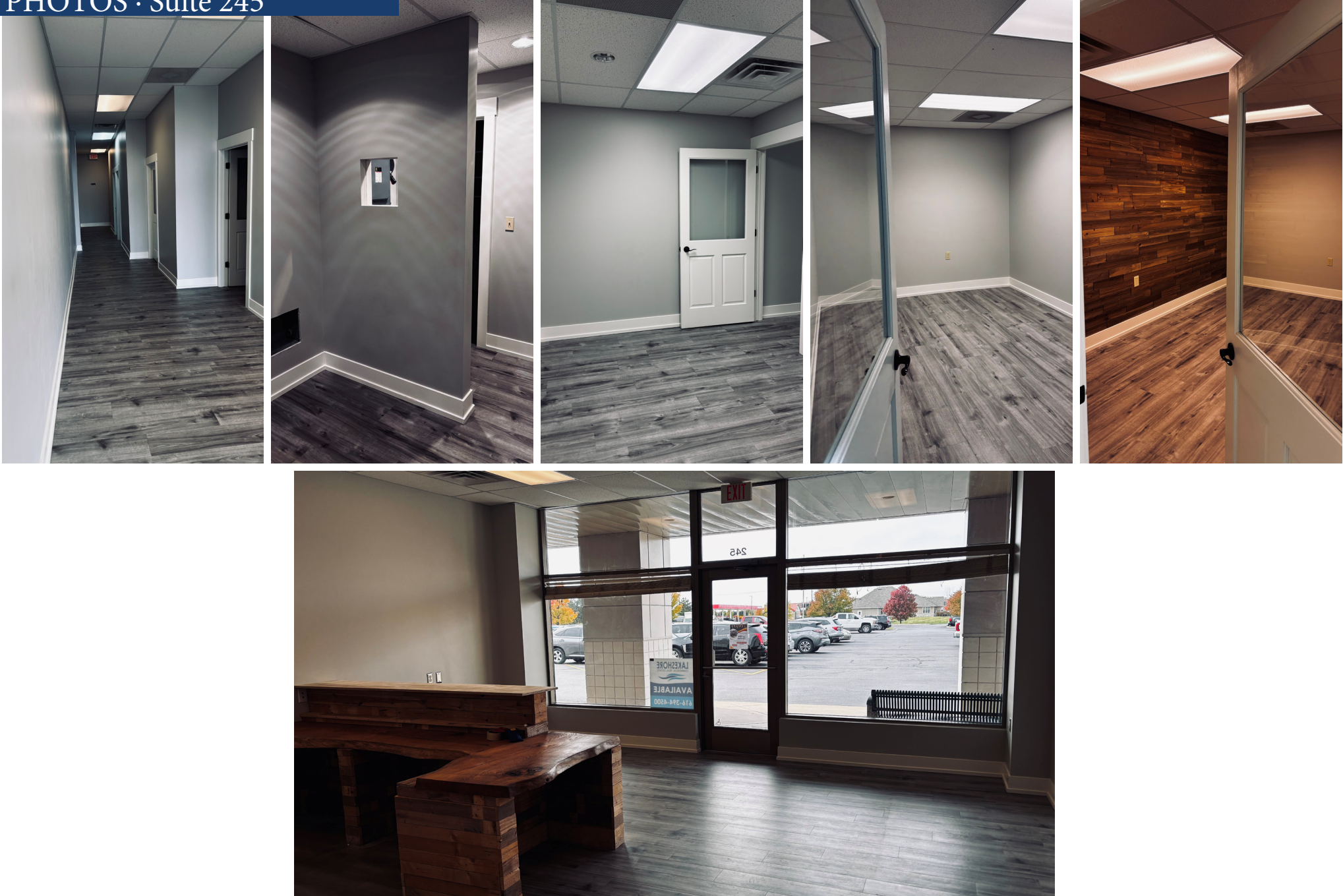




FOR LEASE · 9479 Riley Street · Zeeland, MI 49464



## PHOTOS · Suite 245



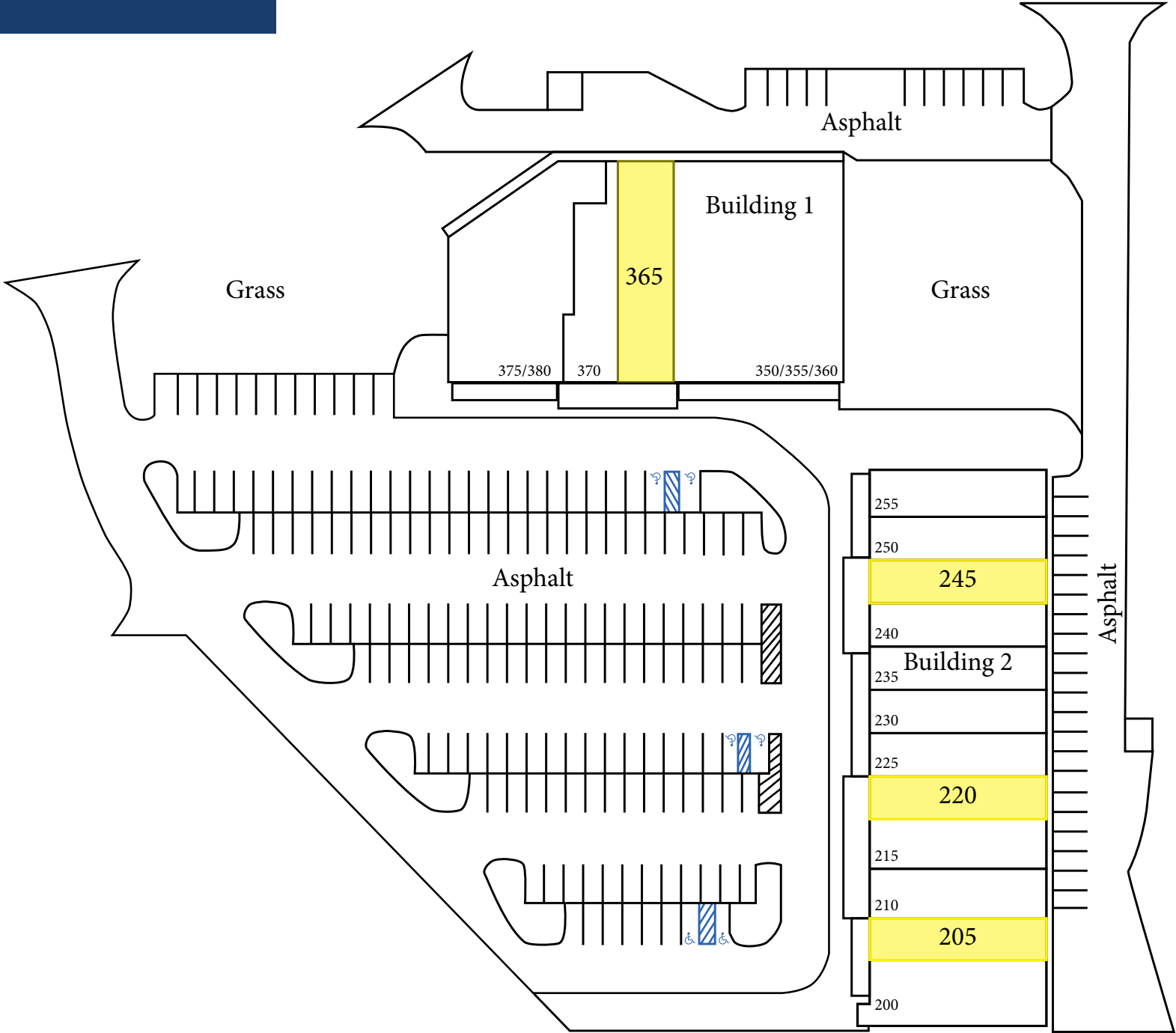
44 East 8th Street, Suite 510 | Holland, MI 49423 | 616.394.4500



FOR LEASE · 9479 Riley Street · Zeeland, MI 49464

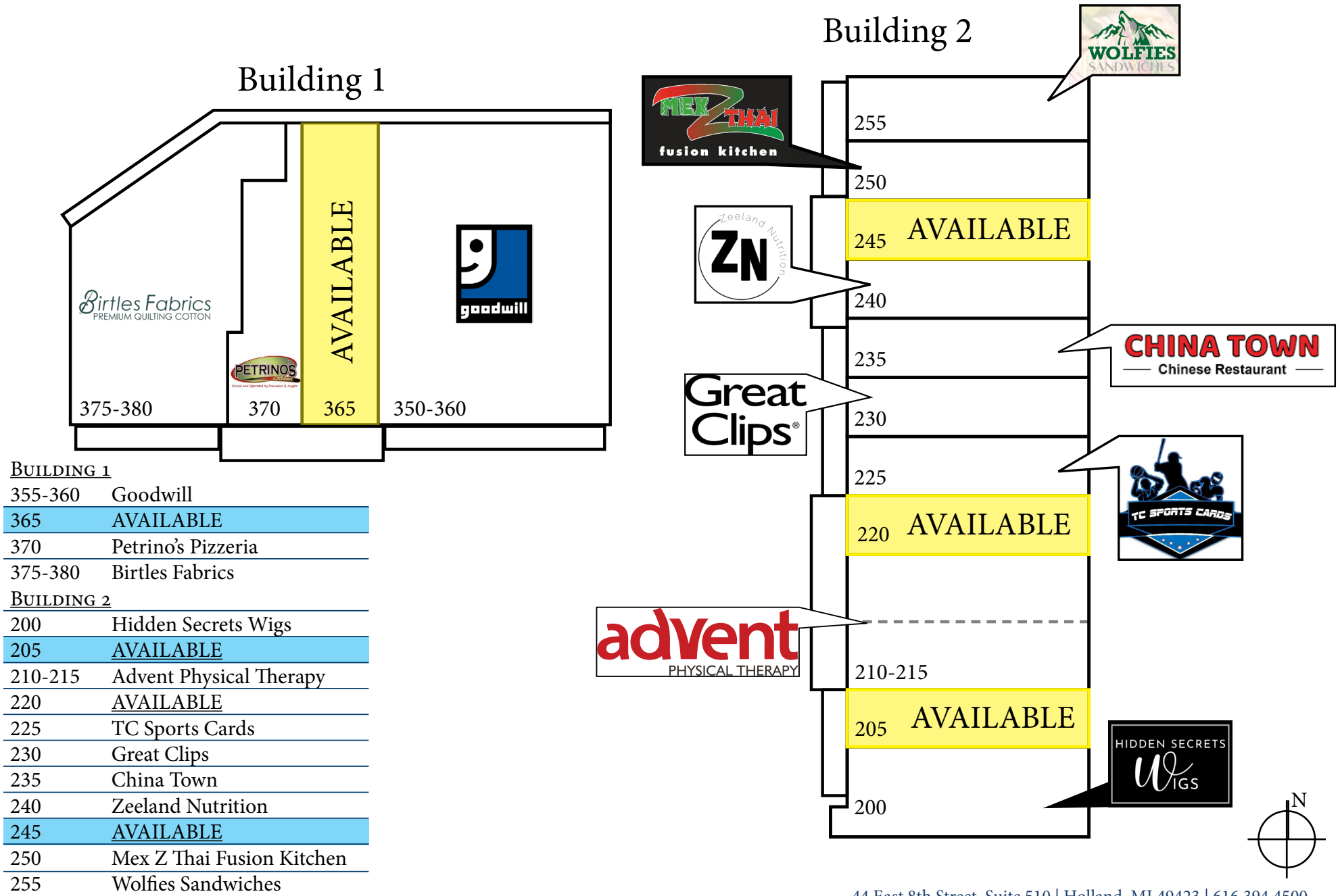


LAYOUT





## LAYOUT





FOR SALE · 9427 Pentatech Drive · Zeeland, MI 49464

FLOOR PLAN





## YOUR PREMIER BROKER IN WEST MICHIGAN



**MIKE NAGELKIRK**  
ADVISOR

DIRECT (+1) 616-355-3151  
CELL (+1) 616-836-1122  
MIKE@LAKESHORECOMMERCIAL.COM



**CALEB DRISENGA**  
ADVISOR

DIRECT (+1) 616-355-3149  
CELL (+1) 616-283-8205  
CALEB@LAKESHORECOMMERCIAL.COM



**DREW DURHAM**  
PRINCIPAL

DIRECT (+1) 616-355-3148  
CELL (+1) 616-566-2039  
DREW@LAKESHORECOMMERCIAL.COM



**JASON DEWITT**  
PRINCIPAL

DIRECT (+1) 616-355-3156  
CELL (+1) 616-836-2856  
JASON@LAKESHORECOMMERCIAL.COM



**JIM EDEWAARD, CCIM**  
ADVISOR

DIRECT (+1) 616-355-3144  
CELL (+1) 616-403-6131  
JIM@LAKESHORECOMMERCIAL.COM



**KRIS DEPREE**  
PRINCIPAL

DIRECT (+1) 616-355-3141  
CELL (+1) 616-212-5576  
KRIS@LAKESHORECOMMERCIAL.COM



**TOM POSTMA**  
PRINCIPAL

DIRECT (+1) 616-355-3145  
CELL (+1) 616-283-2411  
TOM@LAKESHORECOMMERCIAL.COM

Lakeshore Commercial Real Estate has over 100 years of experience in the industry. We have seen many changes and evolutions over the years, but our focus has always remained the same: to serve businesses in our community and help them achieve their success. We specialize in all aspects of commercial real estate, including sales, management, and leasing. We have a deep understanding of the local market and the unique needs of different businesses. We use our expertise to help our clients find the right property, negotiate the best deals, and manage their properties efficiently and effectively. We don't just have you covered on the Lakeshore. We have created excellent relationships with brokers outside of the Lakeshore area to ensure we are serving you best. We are committed to our clients and their success. We work closely with each client to understand their needs and goals, and we develop customized solutions to help them achieve those goals.