

FOR LEASE

1118 Washington Ave
Holland, MI 49423



Located on Washington Avenue is a 3,000 sf shop space with an overhead door and office areas. This location is near Holland's Southside Family Fare on US-31 Business Route (S Washington Ave) just north of Exit 47 I-196/US-31. The area is very well established and has a great mix of regional/national tenants as well as locally owned businesses. The heavily traveled (S Washington Avenue) makes this an ideal location for any business.



CALEB DRIESEN
• DIR +1 616 355 3149
• MOB +1 616 283 8205
• CALEB@LAKESHORECOMMERCIAL.COM
JIM EDEWAARD, CCIM
• DIR +1 616 355 3144
• MOB +1 616 403 6131
• JIM@LAKESHORECOMMERCIAL.COM

OFFICE/SHOP SPACE
3,000 SF

www.LakeshoreCommercial.com
44 East 8th Street, Suite 510 | Holland, MI 49423 | 616.394.4500

FOR LEASE · 1118 Washington Ave · Holland, MI 49423



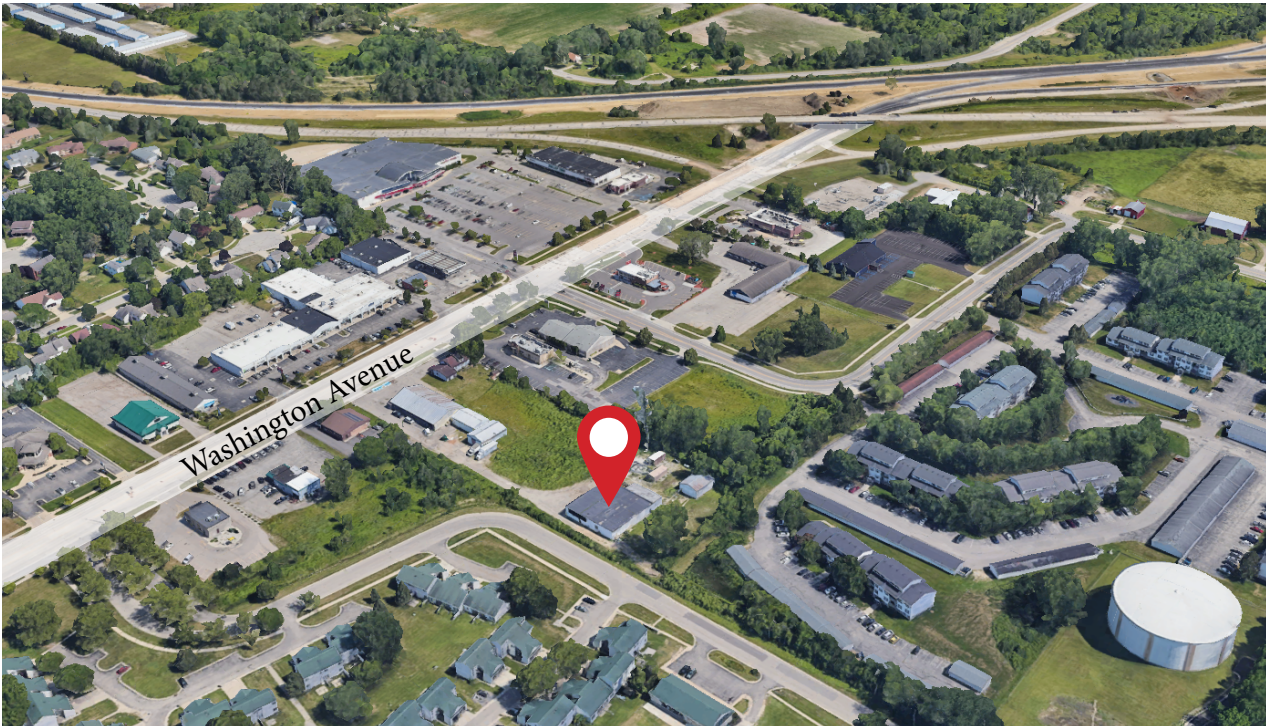
LEASE INFORMATION

Rentable SF	3,000 SF
Lease Rate	\$5.00
Lease Type	Modified Gross
Rate per Month	\$1,250/Month
Term	36-60 Months
Taxing Authority	City of Holland
County	Allegan
Zoning	CMU

BUILDING INFORMATION

- Close to US-31 and Blue Star Hwy
- Heavy traffic area
- Near many local and national retailers like Family Fare, McDonalds, Wendy's, Dollar Tree, Goodwill, and many more
- Features shop space
- Office Area
- (1) Overhead Door
- AADT Traffic Count (2024)

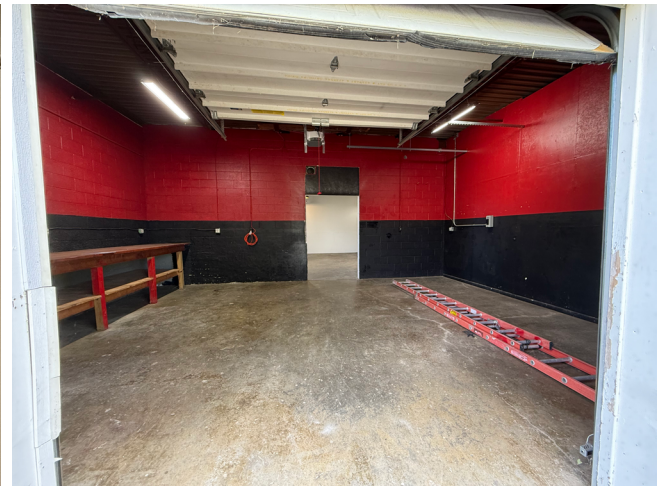
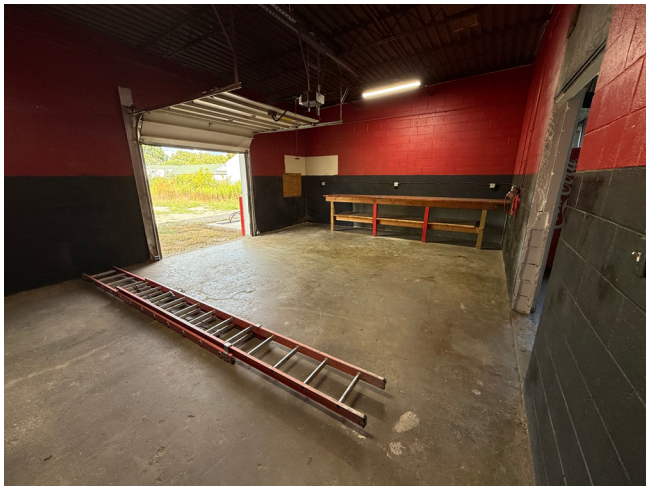
S Washington Ave - 19,364



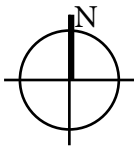
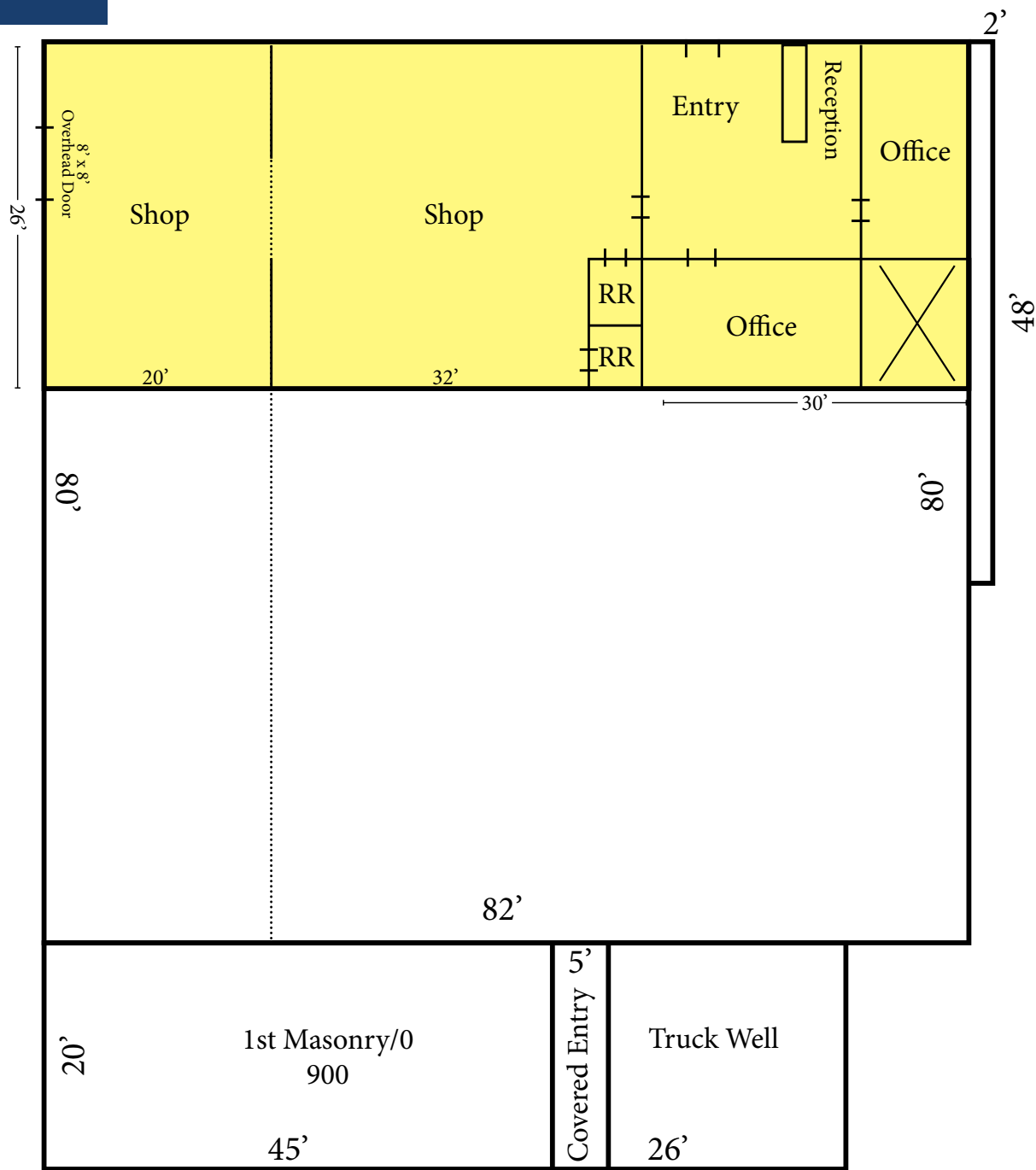
FOR LEASE · 1118 Washington Ave · Holland, MI 49423



PHOTOS

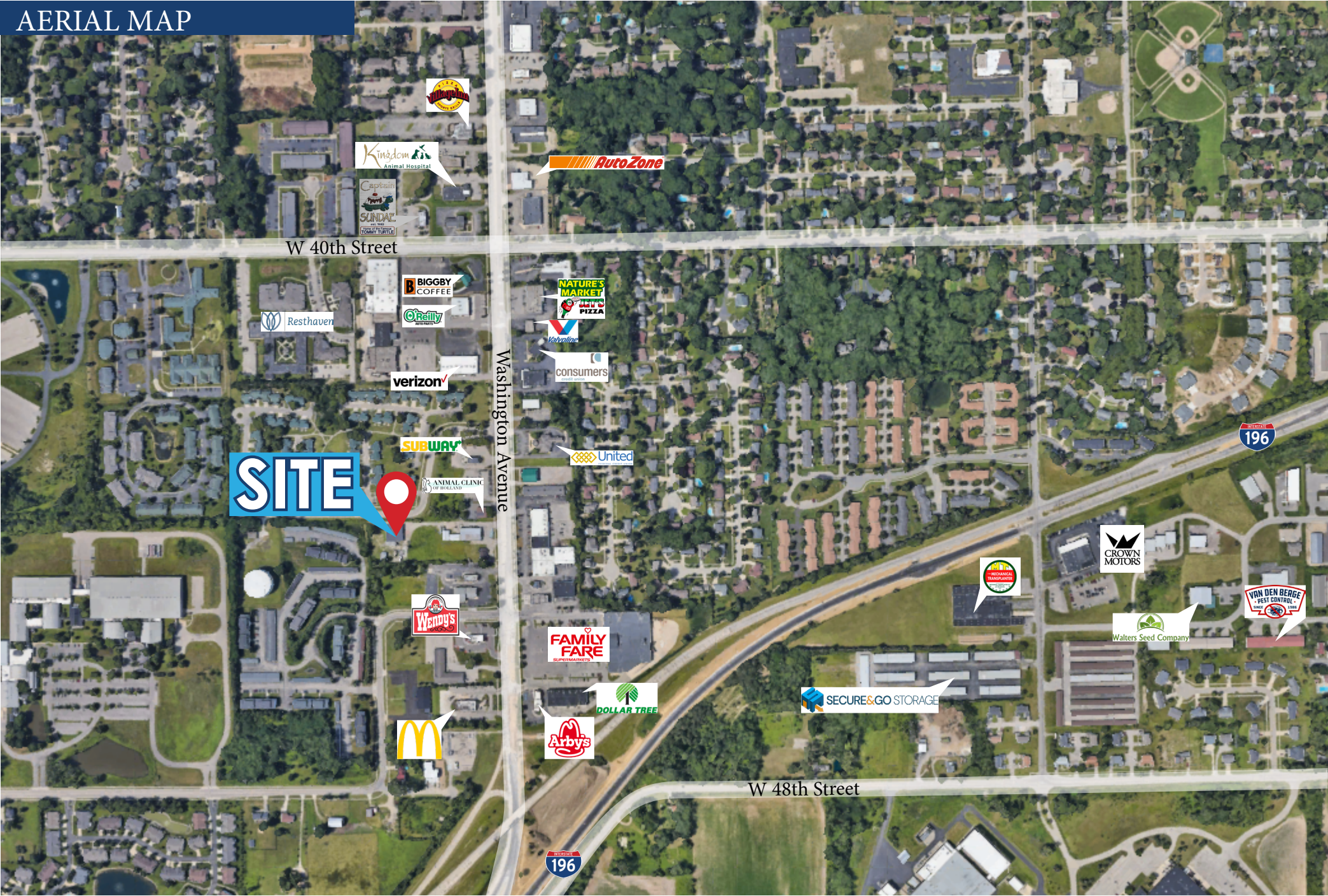


LAYOUT



FOR LEASE · 1118 Washington Ave · Holland, MI 49423

AERIAL MAP



YOUR PREMIER BROKER IN WEST MICHIGAN



CALEB DRISENGA

ADVISOR

DIRECT (+1) 616-355-3149

CELL (+1) 616-283-8205

CALEB@LAKESHORECOMMERCIAL.COM



JIM EDEWAARD, CCIM

ADVISOR

DIRECT (+1) 616-355-3144

CELL (+1) 616-403-6131

JIM@LAKESHORECOMMERCIAL.COM



DREW DURHAM

PRINCIPAL

DIRECT (+1) 616-355-3148

CELL (+1) 616-566-2039

DREW@LAKESHORECOMMERCIAL.COM



JASON DEWITT

PRINCIPAL

DIRECT (+1) 616-355-3156

CELL (+1) 616-836-2856

JASON@LAKESHORECOMMERCIAL.COM



KRIS DEPREE

PRINCIPAL

DIRECT (+1) 616-355-3141

CELL (+1) 616-212-5576

KRIS@LAKESHORECOMMERCIAL.COM



MIKE NAGELKIRK

ADVISOR

DIRECT (+1) 616-355-3151

CELL (+1) 616-836-1122

MIKE@LAKESHORECOMMERCIAL.COM



TOM POSTMA

PRINCIPAL

DIRECT (+1) 616-355-3145

CELL (+1) 616-283-2411

TOM@LAKESHORECOMMERCIAL.COM

Lakeshore Commercial Real Estate has over 100 years of experience in the industry. We have seen many changes and evolutions over the years, but our focus has always remained the same: to serve businesses in our community and help them achieve their success. We specialize in all aspects of commercial real estate, including sales, management, and leasing. We have a deep understanding of the local market and the unique needs of different businesses. We use our expertise to help our clients find the right property, negotiate the best deals, and manage their properties efficiently and effectively. We don't just have you covered on the Lakeshore. We have created excellent relationships with brokers outside of the Lakeshore area to ensure we are serving you best. We are committed to our clients and their success. We work closely with each client to understand their needs and goals, and we develop customized solutions to help them achieve those goals.