



OFFICE WITH WAREHOUSE FOR LEASE

1151 Plainfeild Ave NE, Grand Rapids, MI

MAX GROVER, CCIM

616 890 7794

maxg@workwithMOXIE.com

workwithMOXIE.com



LISTING INFORMATION

1151 Plainfeild Ave NE, Grand Rapids, MI

Currently a single tenant building, but could be multi-tenant with separately metered utilities in place and separate entrances. East elevation/top floor is open area with heated 2 vehicle garage. West elevation/Lower level professional offices. Close downtown proximity. Easy access to I-96 & US-131.

3,853
SQUARE FEET

\$10.25
LEASE RATE/SF

\$3,291.10
LEASE PRICE/MONTH



workwithMOXIE.com



LISTING INFORMATION

1151 Plainfeild Ave NE, Grand Rapids, MI

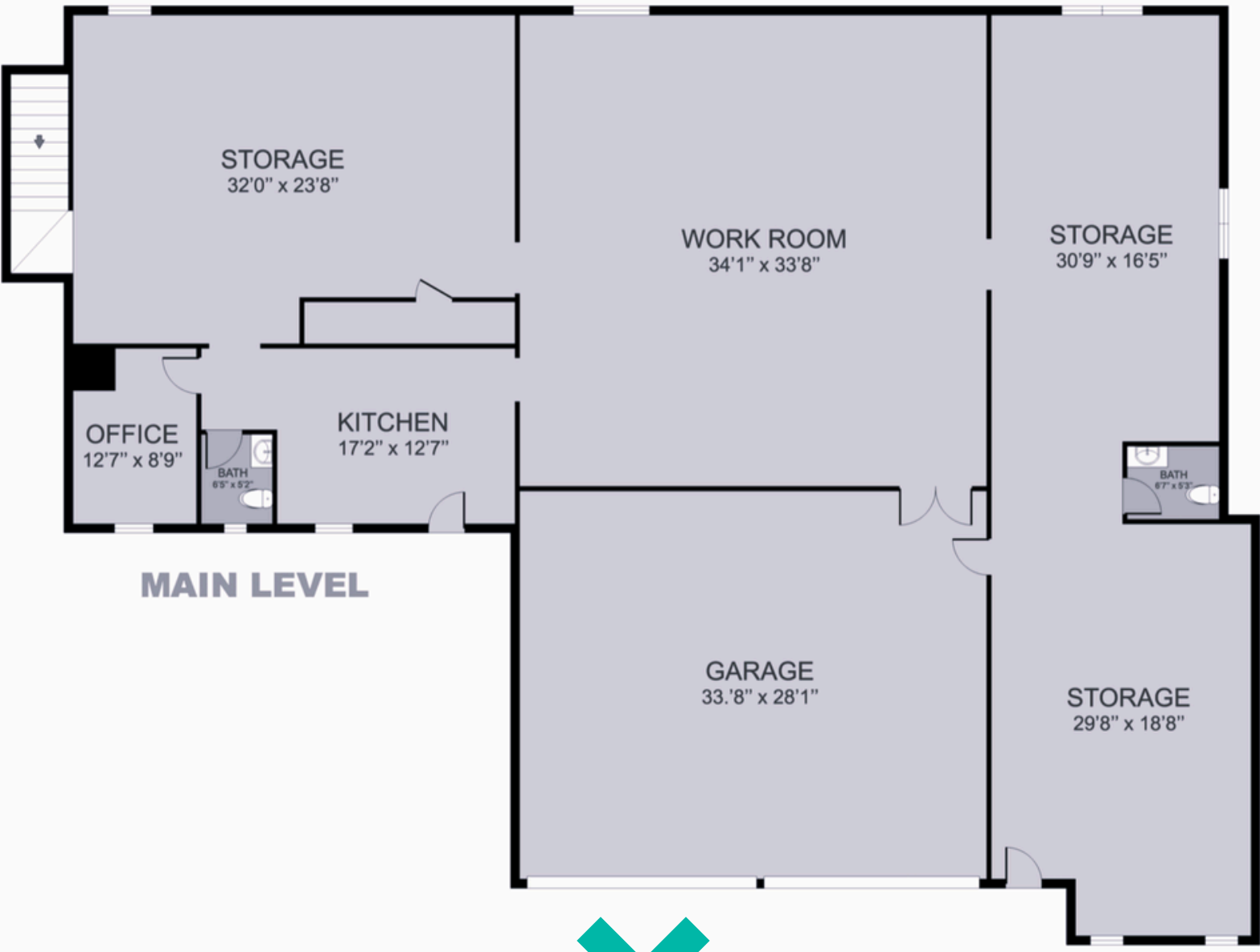
AVAILABLE AREA	3,853 SF
LEASE PRICE/SF	\$10.25
LEASE PRICE/MONTH	\$3,291.10
LEASE TYPE	NNN
SIGNAGE	
DATE AVAILABLE	IMMEDIATELY

DEMOGRAPHICS

	1 MILE	3 MILES	5 MILES
TOTAL POPULATION	31,100	201,000	337,000
MEDIAN AGE	30	32	33
HOUSEHOLDS	26,300	162,000	270,000
MEDIAN INCOME	\$61,200	\$63,700	\$67,200



workwithMOXIE.com

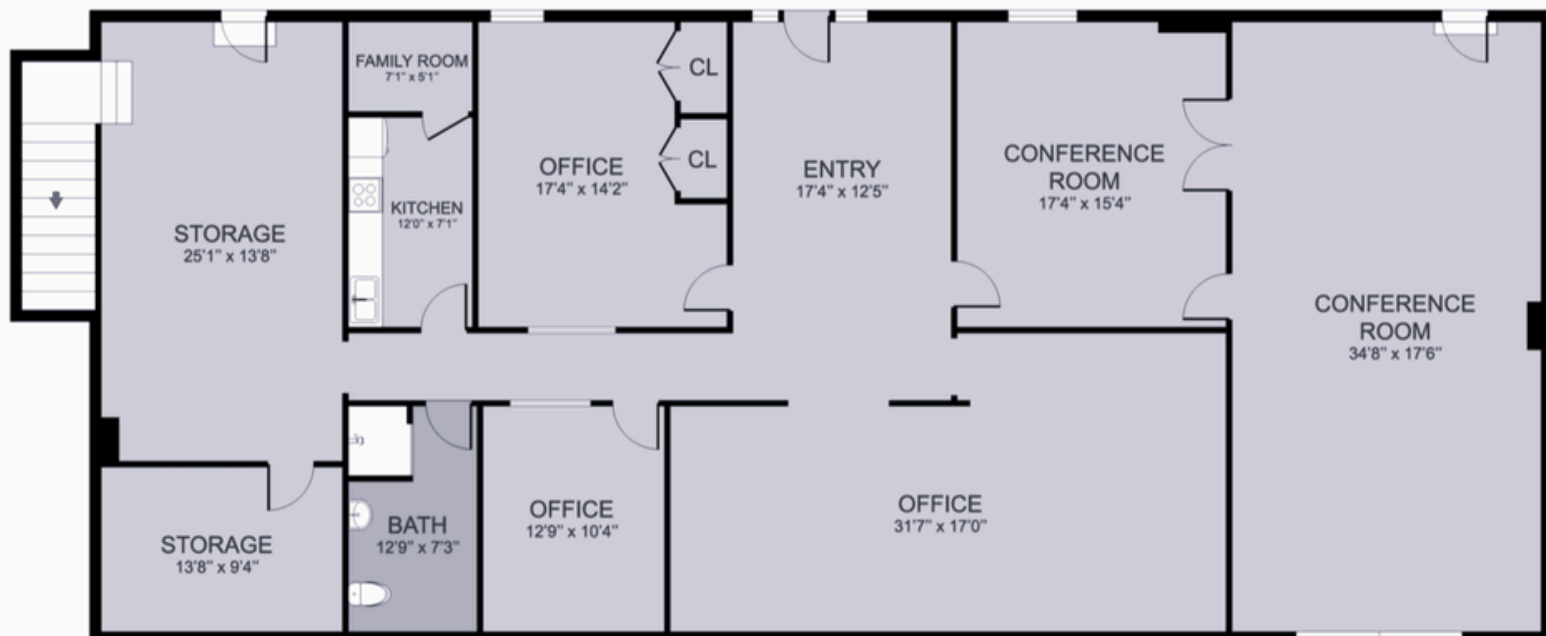


FLOOR PLAN

1151 Plainfeild Ave NE, Grand Rapids, MI



workwithMOXIE.com



LOWER LEVEL



FLOOR PLAN

1151 Plainfeild Ave NE, Grand Rapids, MI



workwithMOXIE.com

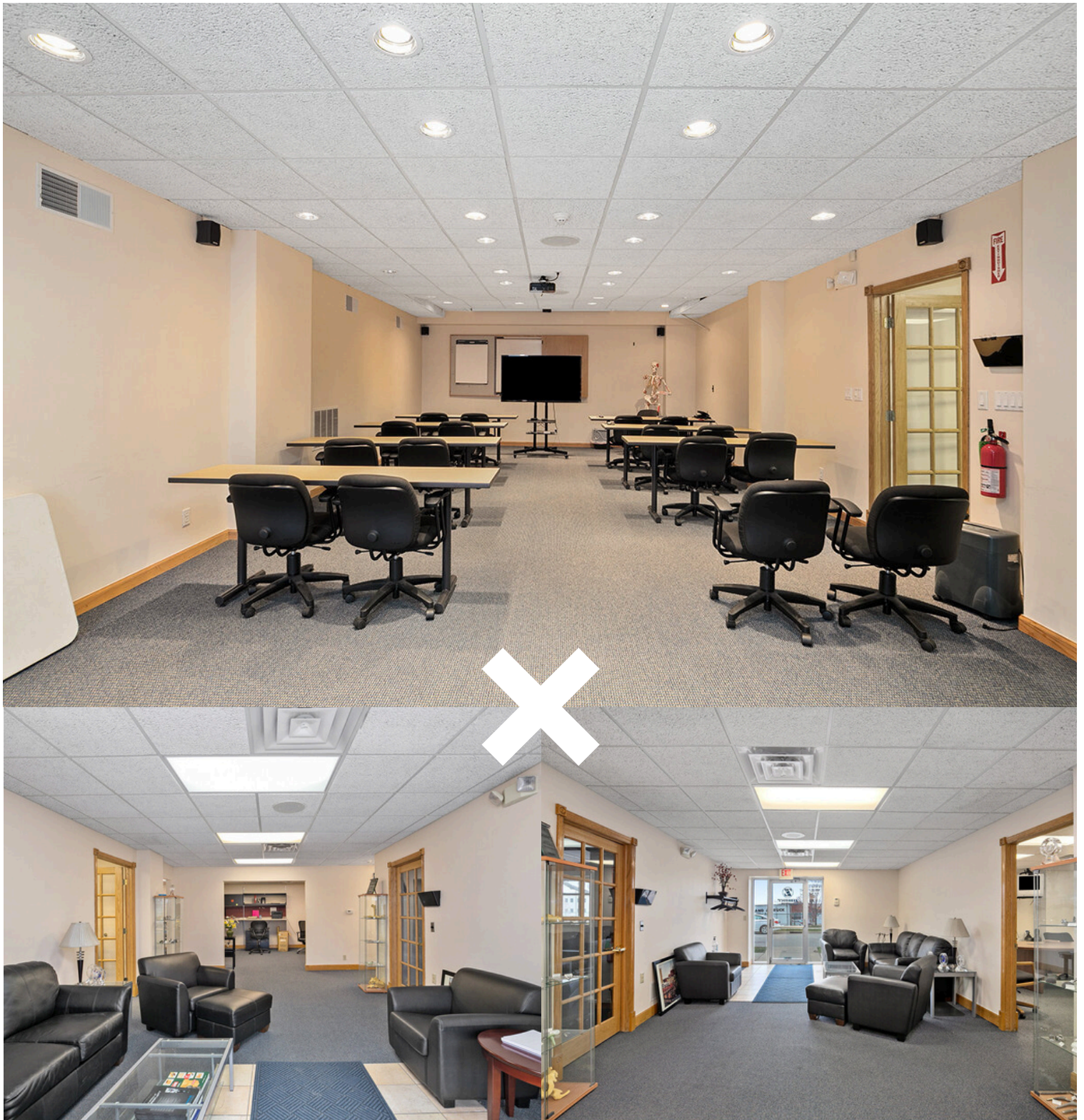


AERIAL MAPS

1151 Plainfeild Ave NE, Grand Rapids, MI



workwithMOXIE.com



LISTING IMAGES

1151 Plainfeild Ave NE, Grand Rapids, MI



workwithMOXIE.com



workwithMOXIE.com



workwithMOXIE.com



IX

workwithMOXIE.com

CONTACT

MOXIE IS READY TO MOVE YOU FORWARD.



MOXIE

3437 Eastern Ave SE, Grand Rapids, MI 49508

616 890 7794

maxg@workwithMOXIE.com

MOXIE Holdings, LLC DBA MOXIE Real Estate + Development (hereinafter referred to as "MOXIE") has prepared this Offering Memorandum (the "Memorandum") for informational purposes only. The information contained herein has been obtained from sources believed to be reliable; however, MOXIE makes no representations or warranties, express or implied, as to the accuracy or completeness of such information. All potential investors, tenants, buyers and/ or recipients of this Memorandum are hereby notified to conduct their own independent due diligence and verification of all information contained within.

MOXIE shall not be liable for any errors or omissions in the information, or for any damages (whether direct, indirect, consequential, incidental, special, punitive, or otherwise) arising out of or in connection with the furnishing, use of, or reliance upon this Memorandum.

This Memorandum is not intended to be, and should not be construed as, an offer to sell or a solicitation of an offer to buy any security or interest in any real estate. This Memorandum is presented in good faith and to the best of MOXIE's knowledge and understanding.