



For Lease

3350 Eagle Park Drive
Grand Rapids, MI 49525

Office building for lease

This is the premier office park in Grand Rapids! Centrally located at I-96 and East Beltline Avenue. Offering generous parking ratios and on-site professional management and maintenance. Convenient access to amenities and easy to find.



Accelerating success.

333 Bridge Street NW
Suite 1200
Grand Rapids, MI 49504
P: +1 616 774 3500
colliers.com

Scott Morgan, JD
Senior Vice President
Direct +1 616 988 5814
Mobile +1 616 292 3455
scott.morgan@colliers.com

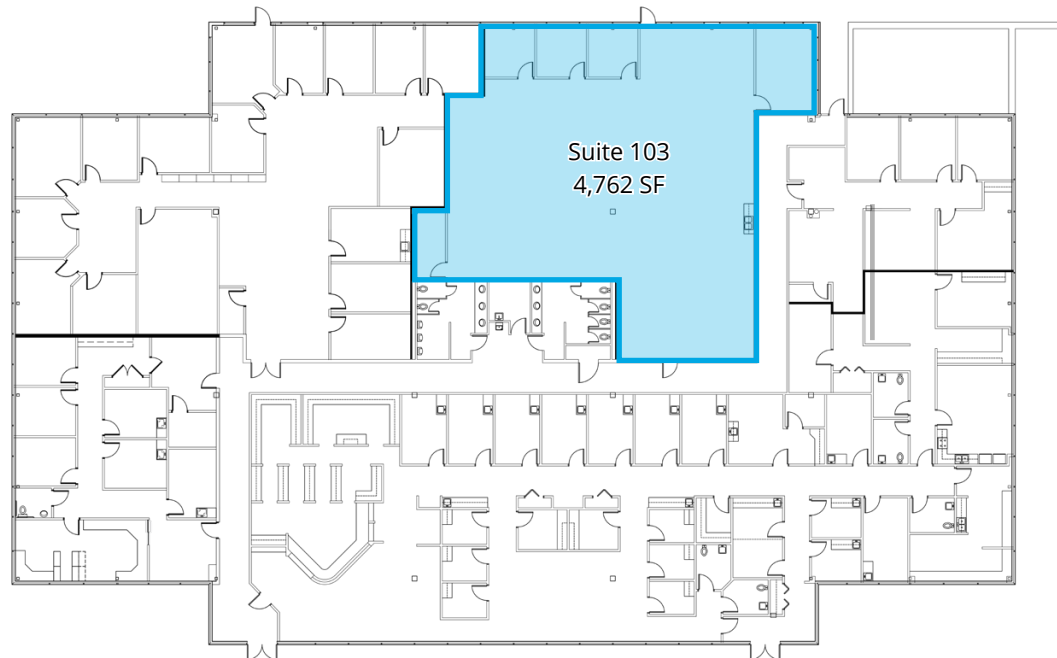


333 Bridge Street NW | Suite 1200
Grand Rapids, MI 49504
P: +1 616 774 3500

Scott Morgan, JD
Senior Vice President
Direct +1 616 988 5814
Mobile +1 616 292 3455
scott.morgan@colliers.com

Suite	SF	Price/SF	Price/Month
103	4,762	\$16.75	\$6,646

- 5/1000 parking ratio
- Monument signage available
- On-site property management and maintenance
- Professional landscaping
- Scenic view overlooking ponds
- Convenient to abundant retail amenities of East Beltline Corridor



This document has been prepared by Colliers International for advertising and general information only. Colliers International makes no guarantees, representations or warranties of any kind, expressed or implied, regarding the information including, but not limited to, warranties of content, accuracy and reliability. Any interested party should undertake their own inquiries as to the accuracy of the information. Colliers International excludes unequivocally all inferred or implied terms, conditions and warranties arising out of this document and excludes all liability for loss and damages arising there from. This publication is the copyrighted property of Colliers International and/or its licensor(s). ©2023. All rights reserved.