

SALE



LAND

VACANT LAND ON E STERNBERG ROAD



PROPERTY OVERVIEW

This 9.39-acre land assemblage presents a rare chance to deliver a high-impact project in a flexible PUD district. With strong market fundamentals, a growing population base, and immediate access to infrastructure, the site is well-positioned for mixed-use, commercial, or residential development. Developers will appreciate the scale, visibility, and versatility this property offers in one of West Michigan's most dynamic growth corridors.

PROPERTY HIGHLIGHTS

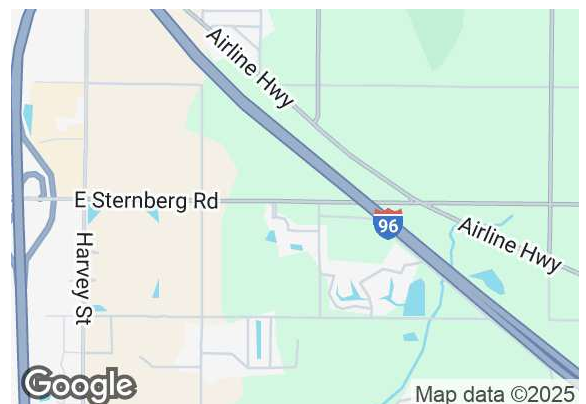
- 9.39 Acres of Development Land across multiple parcels within a flexible PUD District
- Development Flexibility- zoning supports a mix of commercial, office, residential, or retail uses (per township approval)
- Assemblage Opportunity- Contiguous parcels allow for large-scale projects or phased development strategies
- High Growth Corridor- positioned within a rapidly expanding market
- Strong Demographics & Demand Drivers- established neighborhoods, retail, and commercial activity nearby

SALE PRICE

\$700,000

Lot Size:

9.39 Acres



BRADLEY COMPANY
220 Lyon St. NW, Suite 400
Grand Rapids, MI 49503
616.254.0005

CAROLYN BOJI
Advisor
616.213.4560
cboji@bradleyco.com

TERESA DATEMA
Advisor, Healthcare Facilities Specialist
616.309.7395
tdatema@bradleyco.com



BRADLEYCO.COM



MUSKEGON, MI

SALE

LAND



CAROLYN BOJI
Advisor
616.213.4560
cboji@bradleyco.com

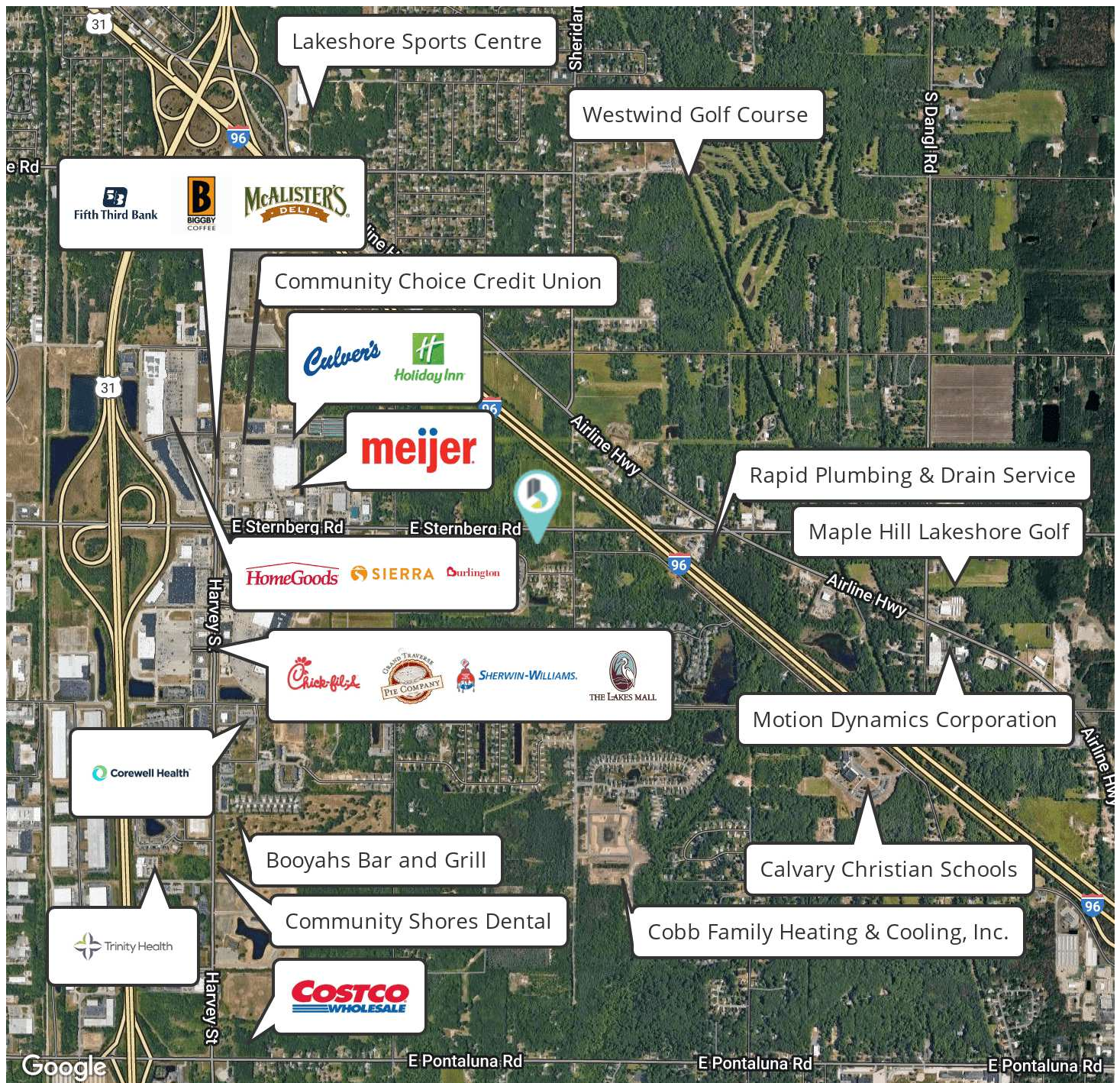
TERESA DATEMA
Advisor, Healthcare Facilities Specialist
616.309.7395
tdatema@bradleyco.com



MUSKEGON, MI

SALE

LAND



CAROLYN BOJI
Advisor
616.213.4560
cboji@bradleyco.com

TERESA DATEMA
Advisor, Healthcare Facilities Specialist
616.309.7395
tdatema@bradleyco.com



MUSKEGON, MI

SALE

LAND



CAROLYN BOJI
Advisor
616.213.4560
cboji@bradleyco.com

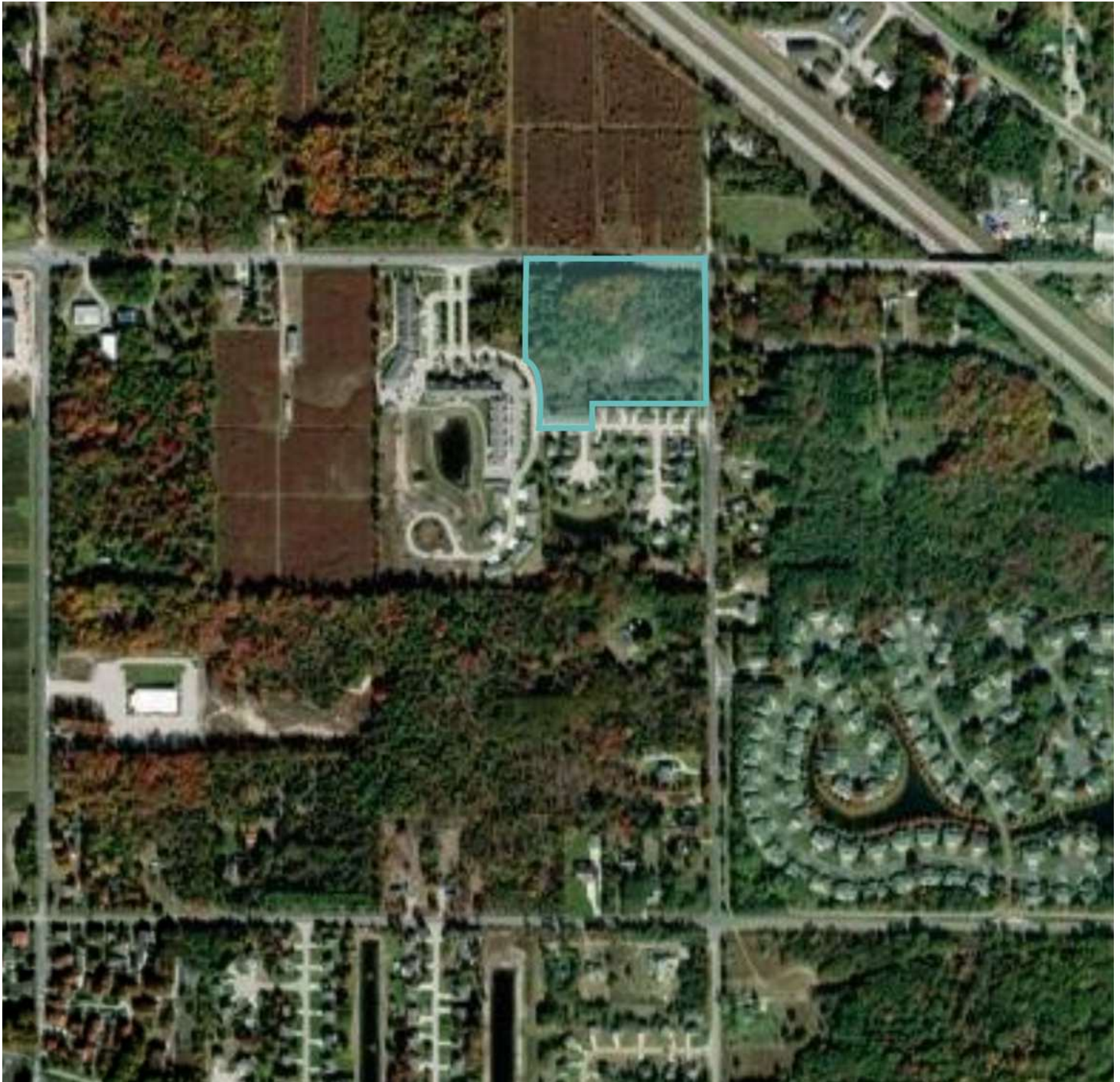
TERESA DATEMA
Advisor, Healthcare Facilities Specialist
616.309.7395
tdatema@bradleyco.com



MUSKEGON, MI

SALE

LAND



CAROLYN BOJI

Advisor
616.213.4560
cboji@bradleyco.com

TERESA DATEMA

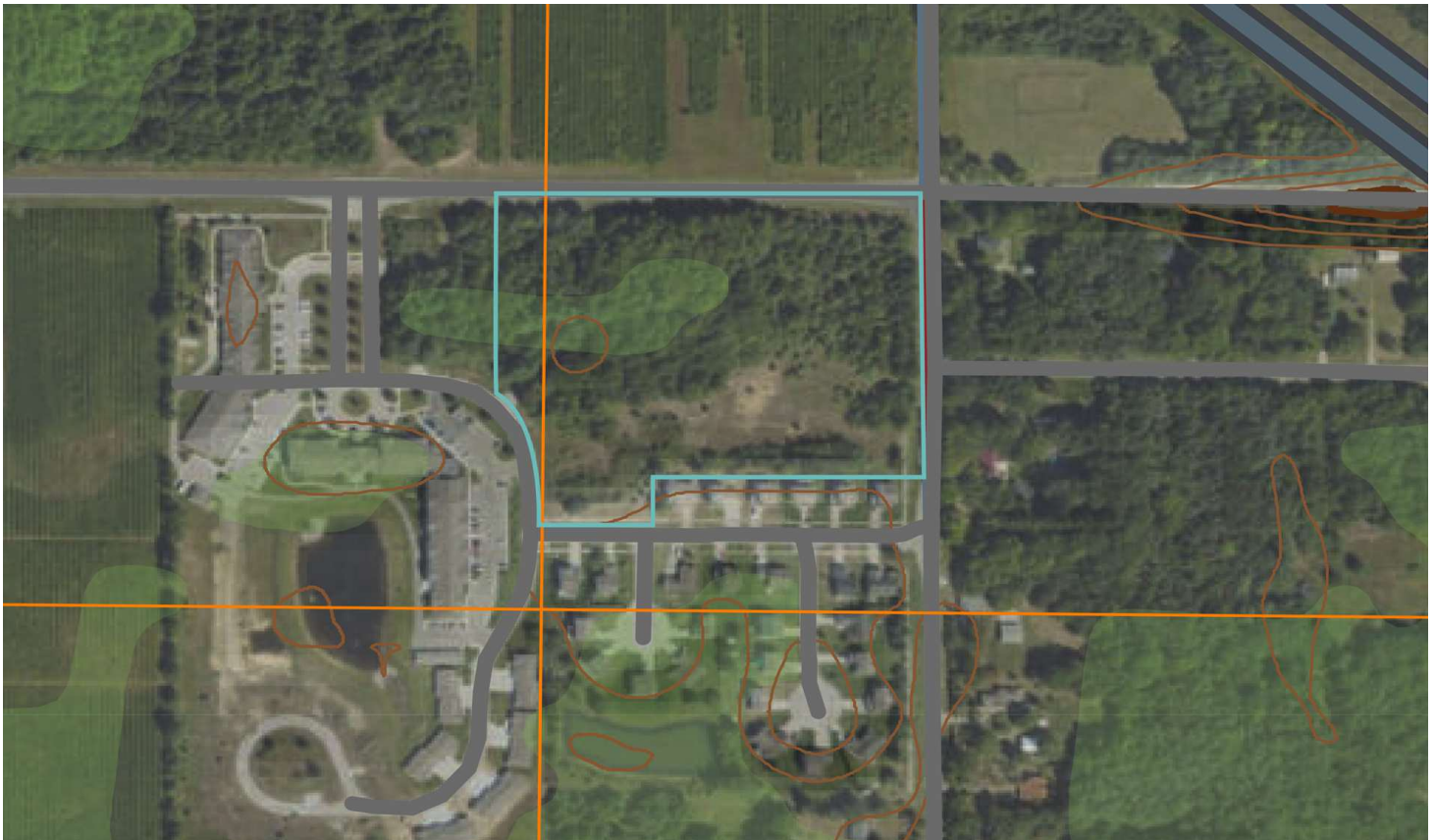
Advisor, Healthcare Facilities Specialist
616.309.7395
tdatema@bradleyco.com



MUSKEGON, MI

SALE

LAND



CAROLYN BOJI
Advisor
616.213.4560
cboji@bradleyco.com

TERESA DATEMA
Advisor, Healthcare Facilities Specialist
616.309.7395
tdatema@bradleyco.com