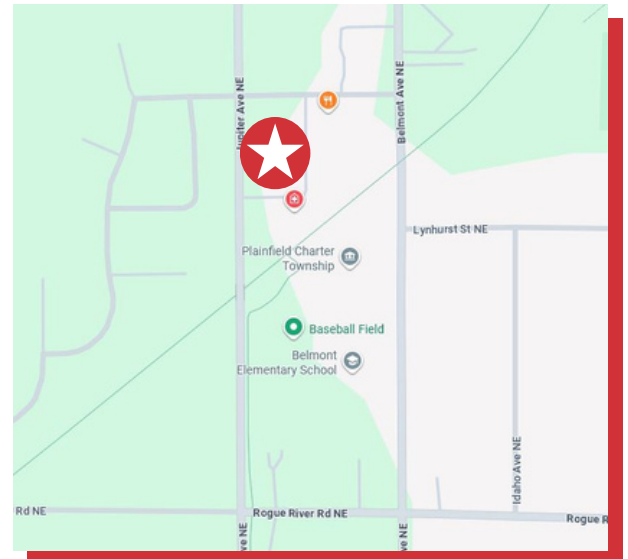




6250 JUPITER AVE NE BELMONT, MI 49306

- First class Building with high ceilings and extensive glass
- Medical / Professional office space
- Ample parking



FOR MORE INFORMATION, CONTACT:

KURT KUNST, SIOR, CCIM
616-242-1116
kurtk@naiwwm.com



naiwwm.com | 616.776.0100

PROPERTY OVERVIEW

FOR LEASE
OFFICE

PROPERTY - BUILDING INFORMATION

Total Building Size:	9,829 SF	Floors:	1
Building Class:	B	Mezzanine:	No
Year Built:	2004	Private Offices / #:	Yes
Acreage:	1.22	Conference Rooms / #:	Yes
Construction:	Brick; Vinyl Siding	Restrooms:	Yes
Roof:	Shingled	Ceiling Height:	12'
HVAC:	Natural gas; Forced air	Signage:	Building
Air Conditioning:	Yes	Parking:	Ample
Security System:	No		
Zoning:	PUD-PLN		
	It is recommended that interested parties contact the Zoning Department to verify that their intended use conforms to the current zoning code.		

UTILITY PROVIDERS

Electric:	Consumers Energy
Natural Gas:	DTE
Sanitary Sewer:	Municipality
Storm Sewer:	Municipality
Water:	Municipality

MUNICIPALITY / TAXES

Municipality:	Plainfield Charter Twp
PPN:	41-10-16-429-004
SEV (2025):	\$683,300
Taxable Value (2025):	\$588,223
Total Property Taxes (2024):	\$28,978.39

We obtained the information in this document from sources we believe to be reliable. However, we have not verified its accuracy and make no guarantee, warranty, or representation about it. It is submitted subject to the possibility of errors, omissions, change of price, rental or other conditions, prior sale, lease or financing, or withdrawal without notice. We include future projections, opinions, assumptions or estimates for example only, and they may not represent current or future performance of the property. You and your tax and legal advisors should conduct your own investigation of the property and transaction.

 **6250 JUPITER AVE NE**
BELMONT, MI 49306

NAI Wisinski of
West Michigan

LEASE OVERVIEW

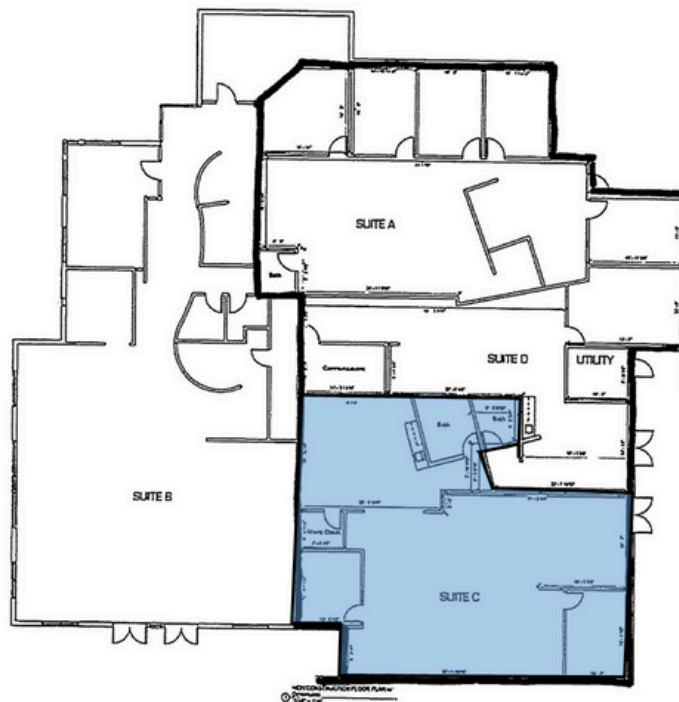
FOR LEASE
OFFICE

LEASE INFORMATION

Lease Type:	MOD GROSS
Terms:	36-60 months
Tenant Provides:	RENT includes; Taxes, Water/Sewer, Refuse Collection, Snow/ Lawn care, Driveway, Sidewalks & Parking Lot repairs and Maintenance. <u>Tenant provides:</u> Electric, Gas, Phone/Internet, Janitorial, Insurance, Nonstructural repairs and maintenance, Mechanical systems repairs and maintenance
Landlord Provides:	Assessments, Structural and Roof Repairs/Replacement, Mechanical systems replacement
Renewal Option:	Yes
Date Available:	12/1/2025

AVAILABILITY

SUITE	RENTABLE SF	RENT/SF/YR	MONTHLY RENT
C	1,644 SF	\$18.00	\$2,466.00

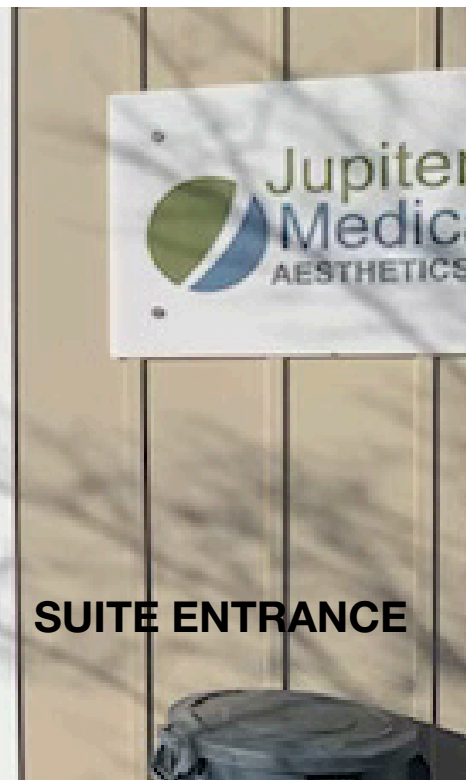


 **6250 JUPITER AVE NE**
BELMONT, MI 49306

NAI Wisinski of
West Michigan

PROPERTY PHOTOS

FOR LEASE
OFFICE



SUITE ENTRANCE

 **6250 JUPITER AVE NE**
BELMONT, MI 49306

NAI Wisinski of
West Michigan

PROPERTY PHOTOS

FOR LEASE
OFFICE

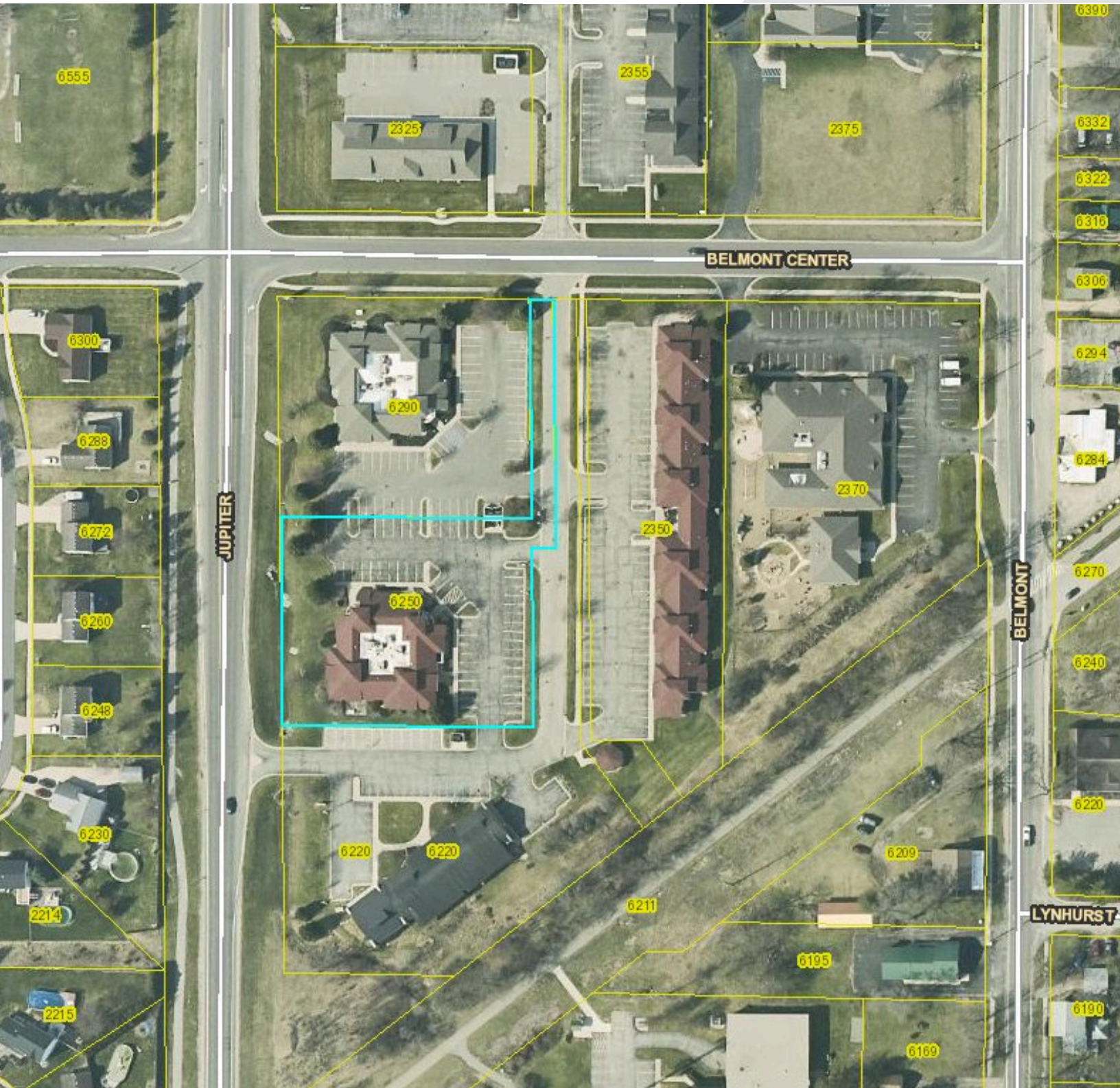


 **6250 JUPITER AVE NE**
BELMONT, MI 49306

NAI Wisinski of
West Michigan

PARCEL MAP

FOR LEASE
OFFICE

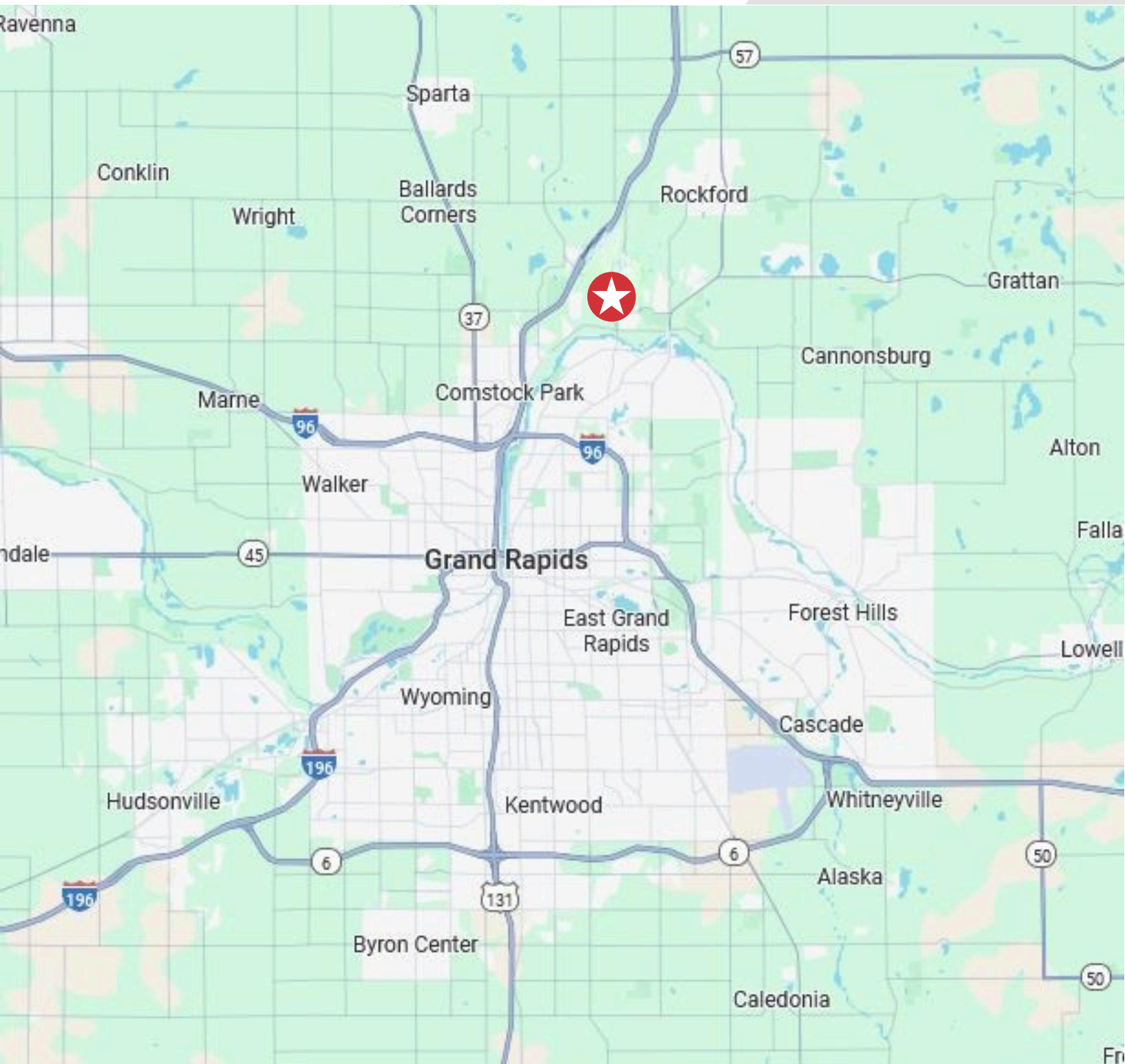


 **6250 JUPITER AVE NE**
BELMONT, MI 49306

NAI Wisinski of
West Michigan

LOCATION MAP

FOR LEASE
OFFICE



 **6250 JUPITER AVE NE**
BELMONT, MI 49306

NAI Wisinski of
West Michigan

LOCATION OVERVIEW

WEST MICHIGAN

West Michigan blends vibrant cities and small-town charm. Grand Rapids offers arts, culture, and a lively urban feel.

Grand Haven is full of year-round activities, from the Coast Guard Festival to peaceful boardwalk strolls. Holland combines sandy beaches with a bustling downtown, Snowmelt streets, and events for all ages. Muskegon features 26 miles of Lake Michigan shoreline, three state parks, and nonstop outdoor fun.

With a population of over 1.5 million and a location between Chicago and Detroit, West Michigan is a dynamic region where natural beauty, culture, and recreation come together in every season.



MidwestLiving

**BEST OF THE
MIDWEST AWARD**

Holland

**BUSINESS
INSIDER**

**US CITIES WITH THE
BEST QUALITY OF
LIFE 2024**

Grand Rapids

W WalletHub

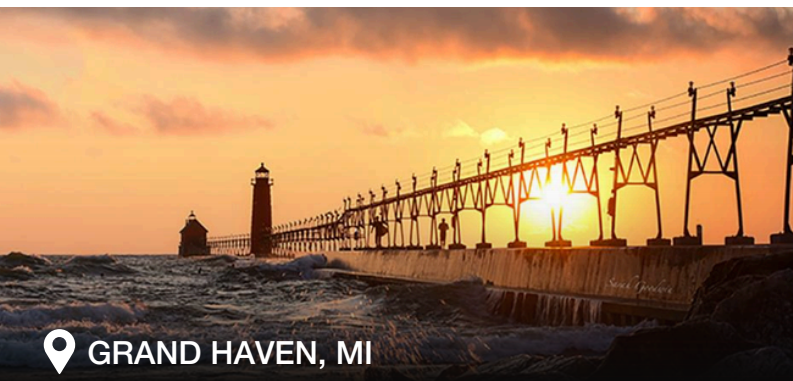
**BEST SMALL CITIES
FOR STARTING A
BUSINESS**


Muskegon



**THE ONLY OFFICIAL
COAST GUARD CITY,
USA**

Grand Haven



 **GRAND HAVEN, MI**



 **GRAND RAPIDS, MI**



 **HOLLAND, MI**



 **MUSKEGON, MI**



naiwwm.com | 616.776.0100

NAI Wisinski of
West Michigan