

LEASE

OFFICE/RETAIL



THE ROWE

Photo credit: Jeff Tippett,
TIPPETT PHOTO 616-475-4000

201 MICHIGAN ST NW, GRAND RAPIDS, MI 49503

PROPERTY OVERVIEW

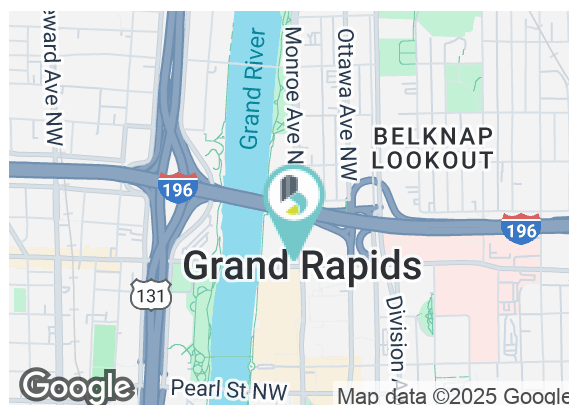
Introducing a prime opportunity for leasing in The Rowe- a 9-story beautifully renovated and historic building located in the bustling heart of downtown. This Class A mixed-use building is perfectly situated across the street from the DeVos Convention Center and Grand Rapids Innovation Park, making it an ideal location for businesses looking to establish a strong presence in the city. With 2,000 or 3,620 square feet of available ground floor space, this is a great opportunity for businesses to attract foot traffic in a high-visibility area. The building boasts 85 luxury residential units on the upper floors, making it a perfect location for businesses that cater to upscale clientele. Additionally, this suite is a neighboring tenant to Atwater Brewery. Don't miss out on this opportunity to lease a prime location in the heart of downtown Grand Rapids!

PROPERTY HIGHLIGHTS

- 9-Story Class A mixed use
- Historical Building in the heart of downtown
- Across the street from the DeVos Convention Center, Grand Rapids Innovation Park
- Ground Floor Retail Space below 85 luxury residential units
- Neighboring Tenant to Atwater Brewery

LEASE RATE **\$19.50 SF/YR (NNN)**

Available SF:	2,000 - 3,620 SF
Building Size:	108,590 SF
Estimated 2024 NNNs:	\$6.26 PSF



BRADLEY COMPANY
220 Lyon St. NW, Suite 400
Grand Rapids, MI 49503
616.254.0005

KEVIN VANHAITSMA
Vice President
616.308.1727
kvanhaitsma@bradleyco.com

ASHLIE KUIPER
Advisor
616.265.0733
akuiper@bradleyco.com



BRADLEYCO.COM



201 MICHIGAN ST NW, GRAND RAPIDS, MI 49503

LEASE

RETAIL



KEVIN VANHAITSMA
Vice President
616.308.1727
kvanhaitsma@bradleyco.com

ASHLIE KUIPER
Advisor
616.265.0733
akuiper@bradleyco.com

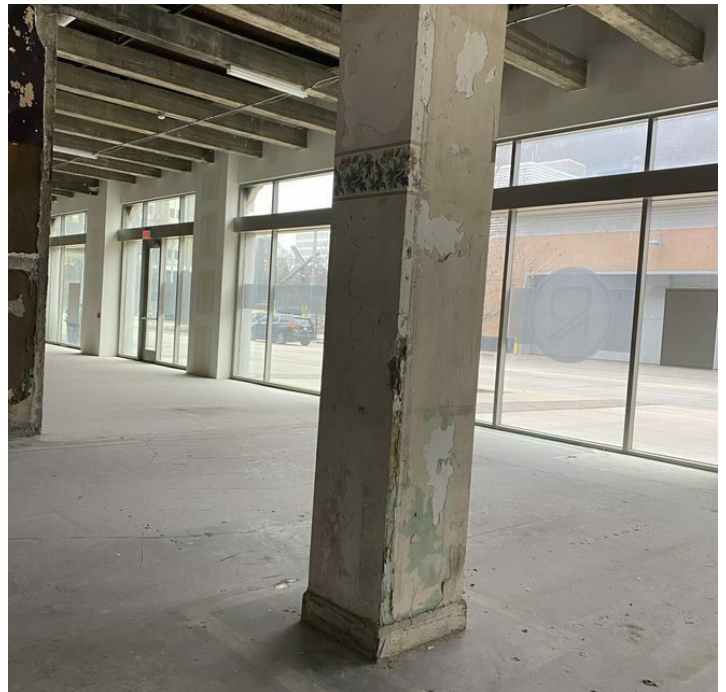


INTERIOR SUITE PHOTOS

201 MICHIGAN ST NW, GRAND RAPIDS, MI 49503

LEASE

RETAIL



KEVIN VANHAITSMA
Vice President
616.308.1727
kvanhaitsma@bradleyco.com

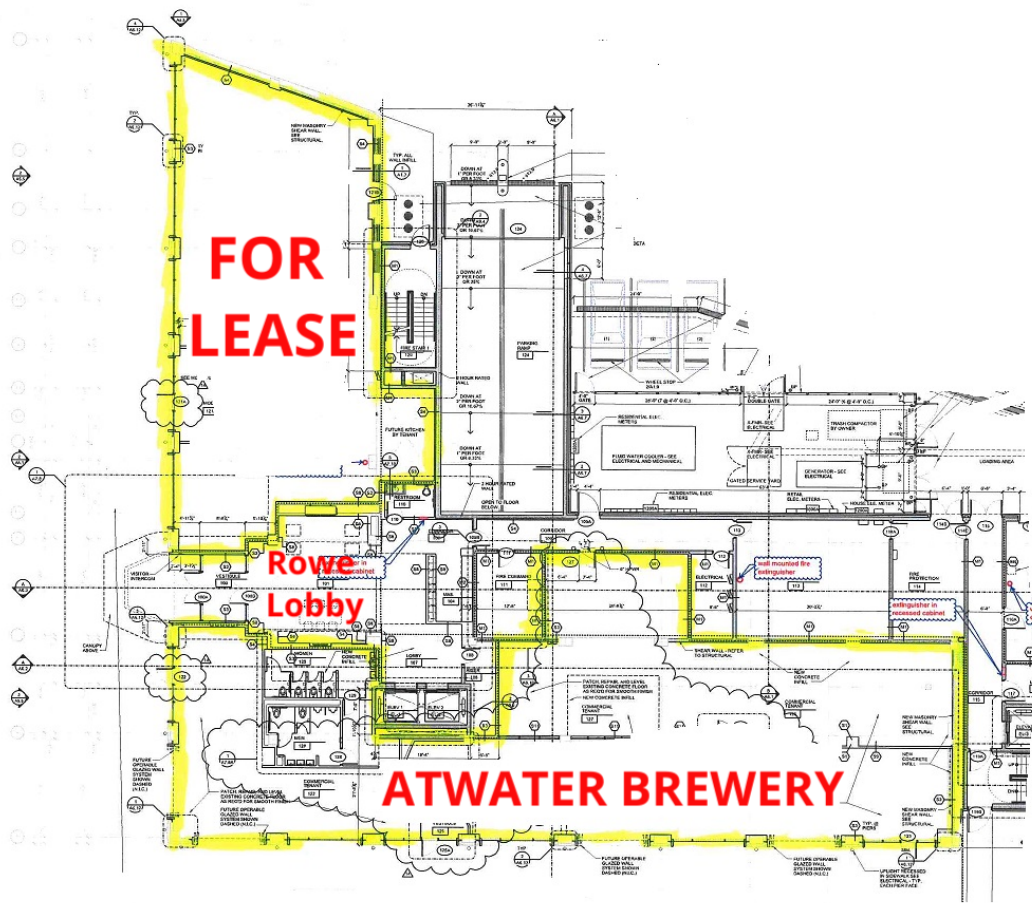
ASHLIE KUIPER
Advisor
616.265.0733
akuiper@bradleyco.com



201 MICHIGAN ST NW, GRAND RAPIDS, MI 49503

LEASE

RETAIL



AVAILABLE SPACES

SUITE	TENANT	SIZE	TYPE	RATE
■ First Floor (2,000 SF)	Available	2,000 SF	NNN	\$19.50 SF/yr
■ First Floor (3,620 SF)	Available	3,620 SF	NNN	\$19.50 SF/yr

KEVIN VANHAITSMA
Vice President
616.308.1727
kvanhaitsma@bradleyco.com

ASHLIE KUIPER
Advisor
616.265.0733
akuiper@bradleyco.com



RETAILER MAP

201 MICHIGAN ST NW, GRAND RAPIDS, MI 49503

LEASE

RETAIL



KEVIN VANHAITSMA
Vice President
616.308.1727
kvanhaitsma@bradleyco.com

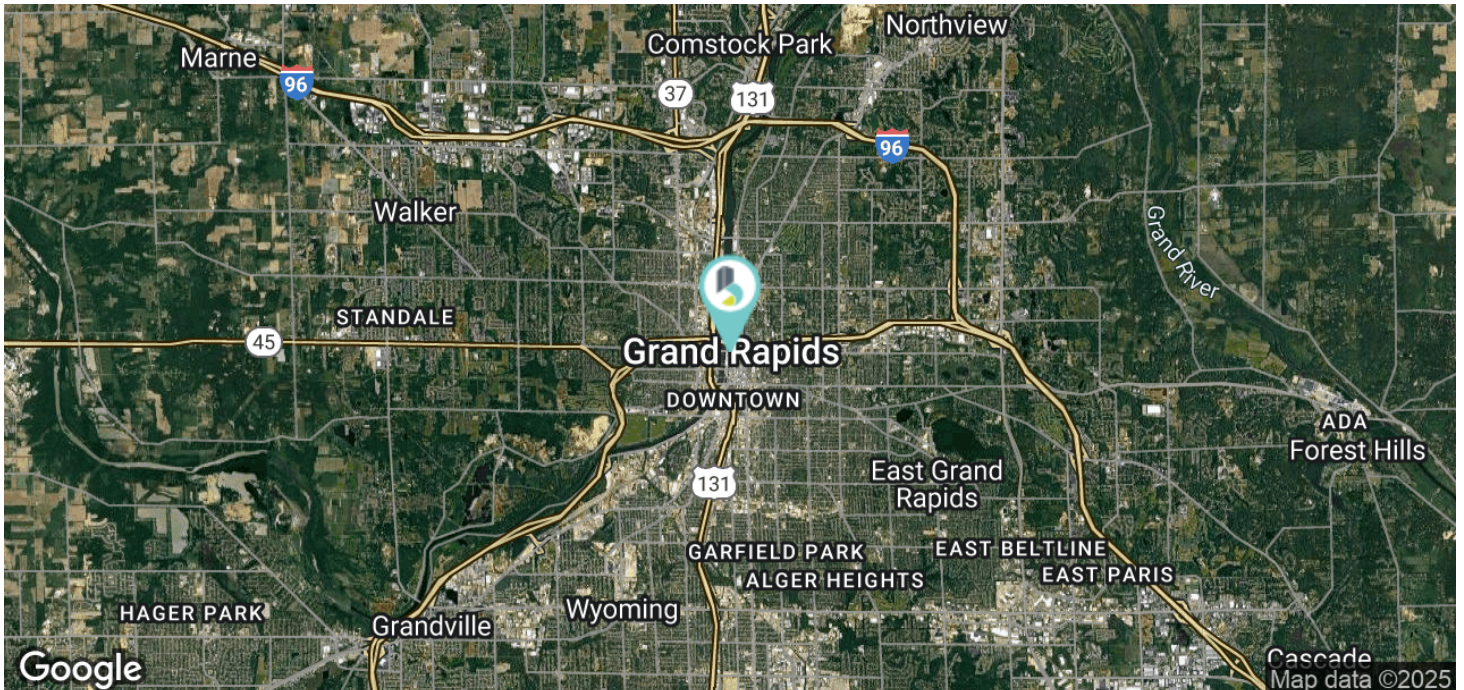
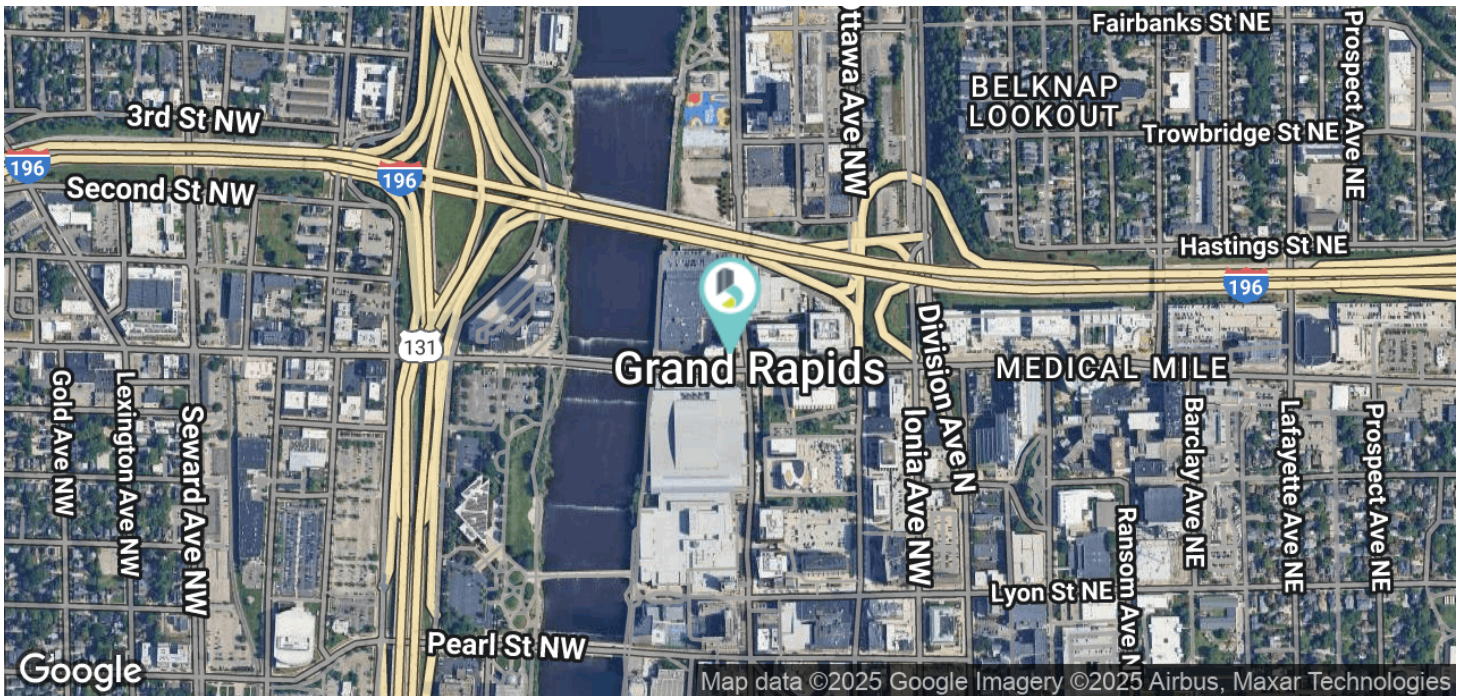
ASHLIE KUIPER
Advisor
616.265.0733
akuiper@bradleyco.com



201 MICHIGAN ST NW, GRAND RAPIDS, MI 49503

LEASE

RETAIL



KEVIN VANHAITSMA
Vice President
616.308.1727
kvanhaitsma@bradleyco.com

ASHLIE KUIPER
Advisor
616.265.0733
akuiper@bradleyco.com



AFFILIATIONS & MEMBERSHIPS

Commercial Alliance of Realtors, CAR
Michigan Association of Realtors, MAR
National Association of Realtors, NAR

EDUCATION

Bachelors Degree, Double Major in Business
and Physical Education, Calvin College

BIOGRAPHY

Kevin VanHaitsma joined Bradley Company as a brokerage advisor in October 2015. In this role, Kevin advises clients in strategic planning, transaction execution for acquisitions and disposition, leasing, and portfolio management throughout the Michigan region. While primarily focused on industrial property, vacant land, and multifamily development, Kevin also helps clients with office, retail, and investment opportunities. He has been awarded the Biggest Office Sale of the Year in 2018, Special Purpose Project/Transaction of the Year in 2021, Land Project of the Year in 2022, and Industrial Project of the Year in 2024 from the Commercial Alliance of Realtors of West Michigan.

Prior to Bradley Company, Kevin worked in the tennis and health club industry for 10 years as operations manager and tennis manager of the Michigan Athletic Club in Grand Rapids, MI. In 2014, Kevin was awarded "State Member of the Year" for Michigan through the Professional Tennis Registry, and in 2015 the athletic clubs were awarded "Private Tennis Facility of the Year" through the Professional Tennis Registry. He held the highest teaching certifications as PTR Professional in Adult Development, High Performance Juniors, and 10 and under juniors.

Kevin has been married to his wife Rachel since 2011 and has three sons, Caleb, Bruce, and August. In his free time, Kevin enjoys spending time with family, playing golf, tennis, traveling, and fishing with his boys. One of the highlights of his traveling including watching Federer play on Center Court at both the US Open and Wimbledon.

CONTACT INFO

T 616.308.1727
C 616.308.1727
kvanhaitsma@bradleyco.com



AFFILIATIONS & MEMBERSHIPS

Commercial Alliance of Realtors, CAR
Commercial Real Estate Women Network,
CREW

EDUCATION

Arizona State University
Grand Canyon University - Bachelor of Science
in Marketing

BIOGRAPHY

Ashlie began her career in Commercial Real Estate in 2021 and joined the Bradley team in 2022. She has experience with office and development projects, as well as property management. She is a project assistant, and property manager while helping in managing five different LLC's for her dad and his partners.

Born and raised in East Grand Rapids, Ashlie wanted to start a new chapter right after high school and venture out to the west coast to attend Arizona State University. After living in Scottsdale for almost 6 years, she missed the Midwest dearly and could not resist the urge to move back home closer to family and friends. Given her passion for real estate and growing up surrounded by entrepreneurship and sales with her Dad being an architect and developer, she decided to pursue commercial real estate. As a real estate agent, she strives to build her business upon communication, dedication and transparency. From her own personal experiences as a working professional, she's learned discipline, resilience, and possesses an unwavering work ethic.

CLIENTS REPRESENTED

- Harbor 31, LLC
- Voyage Benefits
- Henrickson Architecture
- Ruff K9

CONTACT INFO

T 616.265.0733
C 616.265.0733
akuiper@bradleyco.com

CONTACT INFO

T
C

BRADLEY COMPANY
220 Lyon St. NW, Suite 400
Grand Rapids, MI 49503
616.254.0005



BRADLEYCO.COM