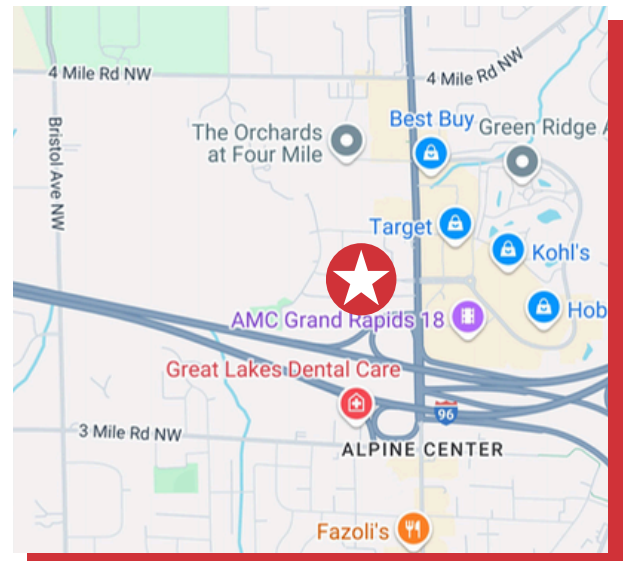




3165 ALPINE AVE NW GRAND RAPIDS, MI 9544

- Alpine Summit has an available end cap space for up to a 10,000 SF addition
- Join Marshall's, Home Goods, Petco, Ulta Beauty, CATO Fashions, and now Kids Empire
- Excellent demographics and tremendous all-day traffic counts
- Premier signalized location at the Alpine Ave and I-96 ramp
- Directly across the street from Target & Kohls



FOR MORE INFORMATION, CONTACT:

BILL TYSON

616 813 0573

billt@naiwwm.com

BOB LOTZAR

616 304 6124

boobl@naiwwm.com



naiwwm.com | 616.776.0100

LEASE OVERVIEW

FOR LEASE
ALPINE SUMMIT RETAIL

LEASE INFORMATION

Lease Type:	NNN
Terms:	60 - 120 Months
Space:	Up to 10,000 SF
Municipality:	City of Grand Rapids
PPN:	41-13-02-427-033

AVAILABILITY

SUITE	RENTABLE SF	RATE/SF/YR	MONTHLY RENT	CAM MONTHLY	TOTAL MONTHLY RENT
LOT	10,000 SF	\$20.00	\$16,666.67	-	-
FRMR ABC WAREHOUSE	28,400 SF	\$15.00	\$35,500	-	-
PENDING	8,400 SF	\$16.85	\$11,795.00	\$2,450.00	\$14,245.00



 **3165 ALPINE AVE NW**
GRAND RAPIDS, MI 9544

NAI Wisinski of
West Michigan

PARCEL MAP

FOR LEASE
ALPINE SUMMIT RETAIL

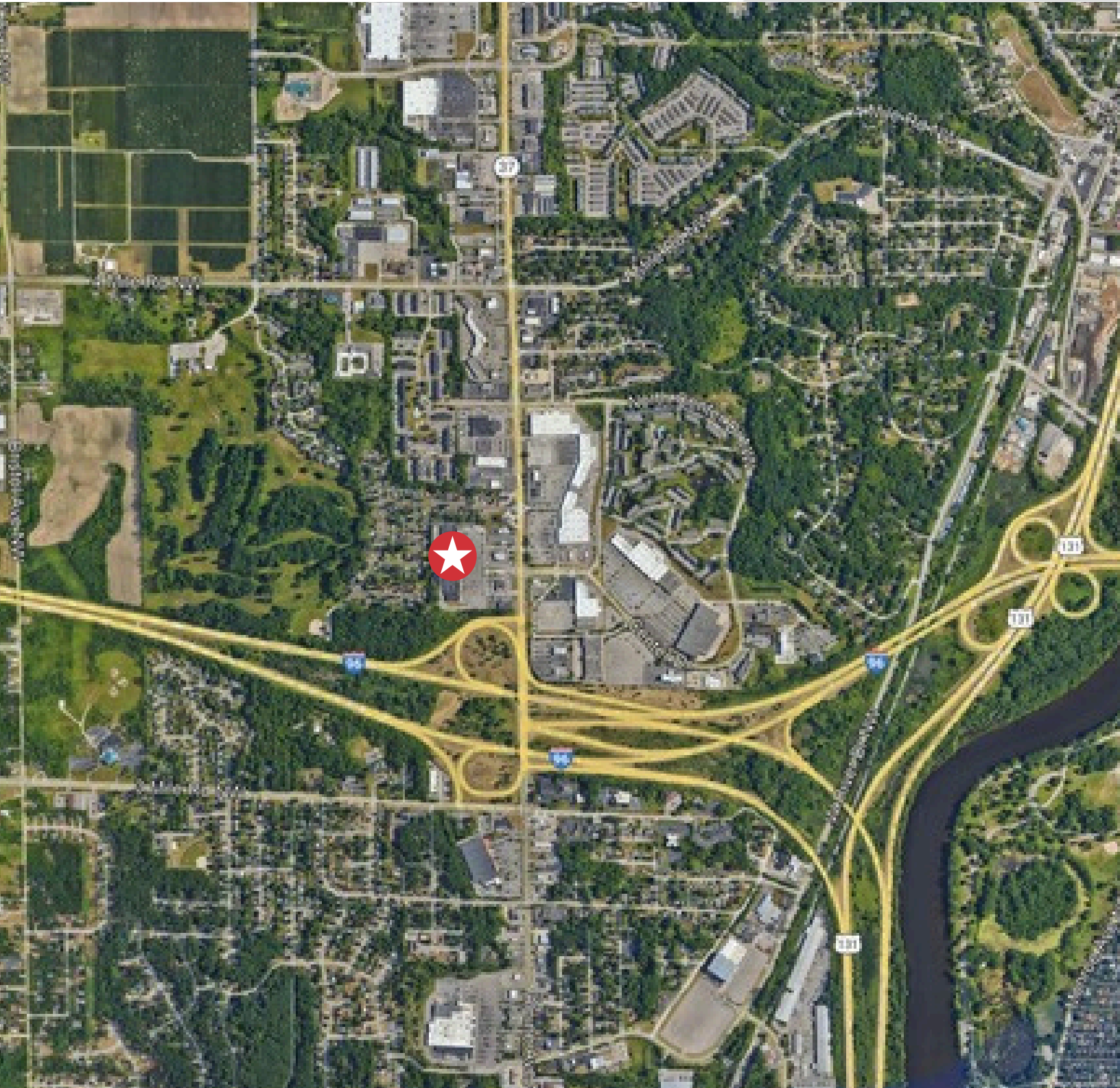


 **3165 ALPINE AVE NW**
GRAND RAPIDS, MI 9544

NAI Wisinski of
West Michigan

AERIAL MAP

FOR LEASE
ALPINE SUMMIT RETAIL



 **3165 ALPINE AVE NW**
GRAND RAPIDS, MI 9544

NAI Wisinski of
West Michigan

RETAIL MAP

FOR LEASE
ALPINE SUMMIT RETAIL

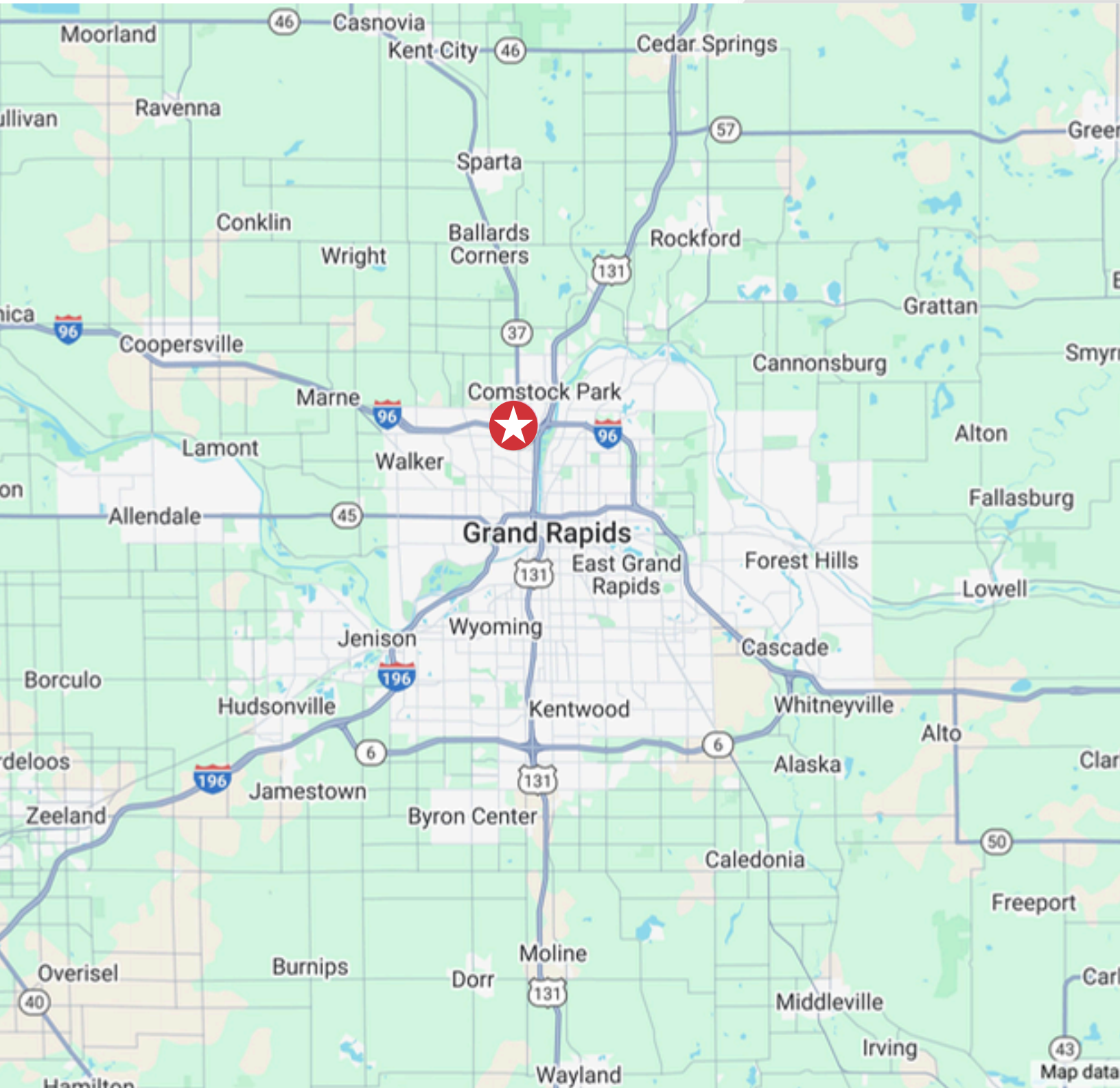


 **3165 ALPINE AVE NW**
GRAND RAPIDS, MI 9544

NAI Wisinski of
West Michigan

LOCATION MAP

FOR LEASE
ALPINE SUMMIT RETAIL



 **3165 ALPINE AVE NW**
GRAND RAPIDS, MI 49544

NAI Wisinski of
West Michigan

DEMOGRAPHICS

FOR LEASE
ALPINE SUMMIT RETAIL

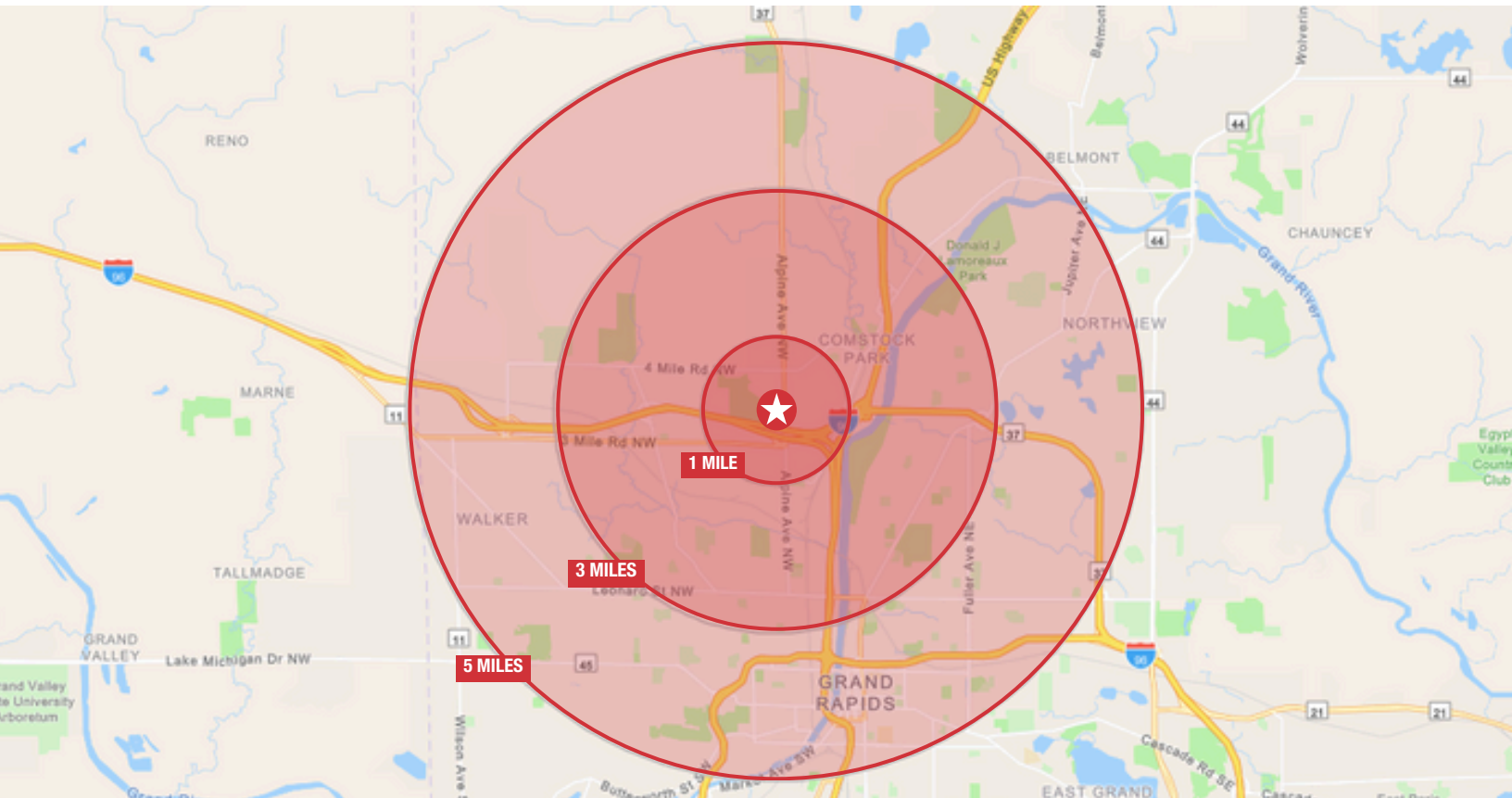
POPULATION	1 MILE	3 MILES	5 MILES
Total Population	13,342	79,682	221,212
Average Age	34.2	34.3	34.0
HOUSEHOLDS			
Total Households	5,556	29,821	86,102
# of Persons per Household	2.37	2.65	2.63
HOUSEHOLD INCOME			
Average Household Income	\$59,067	\$67,604	\$67,644
Average House Valuation	\$205,888	\$220,332	\$240,641

221K

POPULATION
(5 MILES)

\$67K

AVERAGE HH INCOME
(3 MILES)



3165 ALPINE AVE NW
GRAND RAPIDS, MI 9544

NAI Wisinski of
West Michigan

LOCATION OVERVIEW

WEST MICHIGAN

West Michigan blends vibrant cities and small-town charm. Grand Rapids offers arts, culture, and a lively urban feel.

Grand Haven is full of year-round activities, from the Coast Guard Festival to peaceful boardwalk strolls. Holland combines sandy beaches with a bustling downtown, Snowmelt streets, and events for all ages. Muskegon features 26 miles of Lake Michigan shoreline, three state parks, and nonstop outdoor fun.

With a population of over 1.5 million and a location between Chicago and Detroit, West Michigan is a dynamic region where natural beauty, culture, and recreation come together in every season.



MidwestLiving

**BEST OF THE
MIDWEST AWARD**

Holland

**BUSINESS
INSIDER**

**US CITIES WITH THE
BEST QUALITY OF
LIFE 2024**

Grand Rapids

W WalletHub

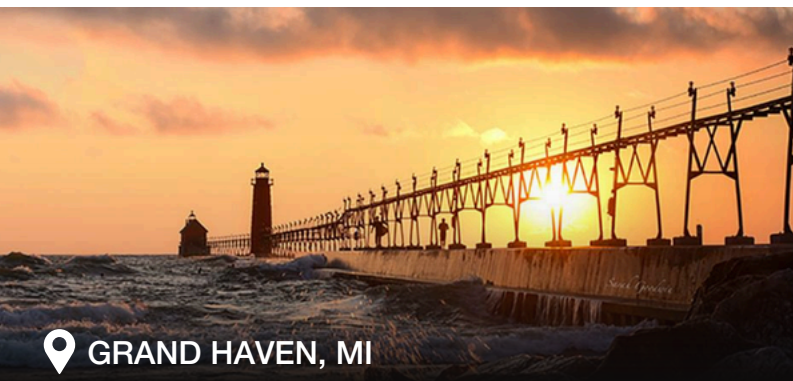
**BEST SMALL CITIES
FOR STARTING A
BUSINESS**

Muskegon



**THE ONLY OFFICIAL
COAST GUARD CITY,
USA**

Grand Haven



📍 GRAND HAVEN, MI



📍 GRAND RAPIDS, MI



📍 HOLLAND, MI



📍 MUSKEGON, MI



naiwwm.com | 616.776.0100

NAI Wisinski of
West Michigan