

22502 & 22544 DIXIE HIGHWAY
PERRYSBURG TOWNSHIP, OH 43551

COMMERCIAL BUILDING FOR LEASE
2,240 Square Feet Available



**SIGNATURE
ASSOCIATES**
KNOW SIGNATURE | KNOW RESULTS

FULL-SERVICE COMMERCIAL REAL ESTATE

PERRYSBURG TWP COMMERCIAL/INDUSTRIAL



GENERAL INFORMATION

Available Space:	2,240 square feet
Lease Rate:	Corner bldg. - \$4.50/sf NNN
Building Size:	Corner bldg. - 5,876 sf
Acreage:	Approx. 2.66 acres
Closest Cross Street:	Dowling Road
County:	Wood
Zoning:	Unzoned
Parking:	50 spaces
Curb Cuts:	Three
Street:	4 lane



For more information, please contact:

ROBERT P. MACK, CCIM, SIOR
(419) 466 6225
rpmack@signatureassociates.com

MEGAN MALCZEWSKI, CCIM, SIOR
(419) 215 1008
mmalczewski@signatureassociates.com

SIGNATURE ASSOCIATES
7150 Granite Circle, Suite 200
Toledo, Ohio 43617
www.signatureassociates.com

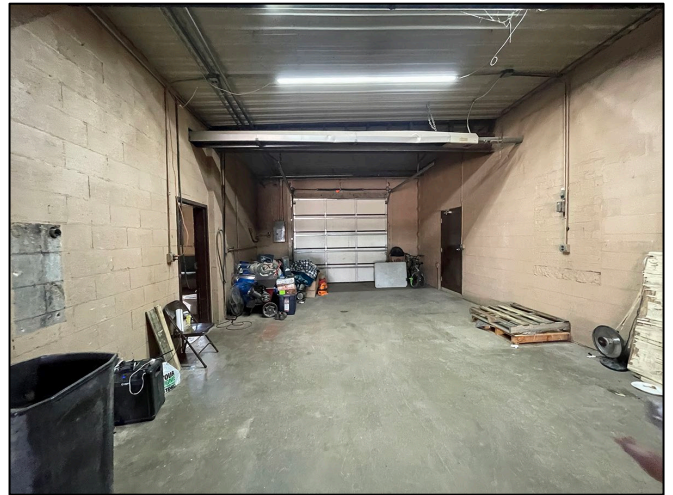
22502 & 22544 Dixie Highway, Perrysburg Twp, OH 43551

Commercial Building For Lease

2,240
Square Feet
AVAILABLE

BUILDING SPECIFICATIONS – CORNER BUILDING

Exterior Walls:	Block & metal
Structural System:	Block & frame
Roof:	Flat
Floors:	Concrete
Floor Coverings:	None
Ceiling Height:	Varies
Basement:	No
Heating:	Propane (2 furnaces)
Air Conditioning:	None
Power:	Multiple panels – 200a/120v
Restrooms:	2
Security System:	No
Overhead Doors:	Two
Sprinklers:	No
Year Built:	1932
Square footage:	Approx. 8,629



Shop



Shop

For more information, please contact:

ROBERT P. MACK, CCIM, SIOR
(419) 466 6225
rpmack@signatureassociates.com

MEGAN MALCZEWSKI, CCIM, SIOR
(419) 215 1008
mmalczewski@signatureassociates.com

SIGNATURE ASSOCIATES
7150 Granite Circle, Suite 200
Toledo, Ohio 43617
www.signatureassociates.com

- Unzoned corner parcel in Perrysburg Township.
- Midway point between Perrysburg and Bowling Green.
- Large enclosed outdoor storage areas.



Stoned lot



Recently updated septic system

LEASE DETAILS

Term:	3 years
Security Deposit:	1 month's rent
Options:	Negotiable
Improvements Allowance:	Negotiable
Tenant Responsibilities:	Utilities, NNN expenses and content liability insurance. NNN expenses (taxes & insurance) = \$1.25/SF.

UTILITIES

Electric:	Toledo Edison
Gas:	Propane
Water:	Well
Sanitary Sewer:	Septic

TRAFFIC COUNTS (TWO-WAY)

DIXIE HIGHWAY	9,672 (2022)
SR-582	5,857 (2022)
DOWLING ROAD	344 (2022)

For more information, please contact:

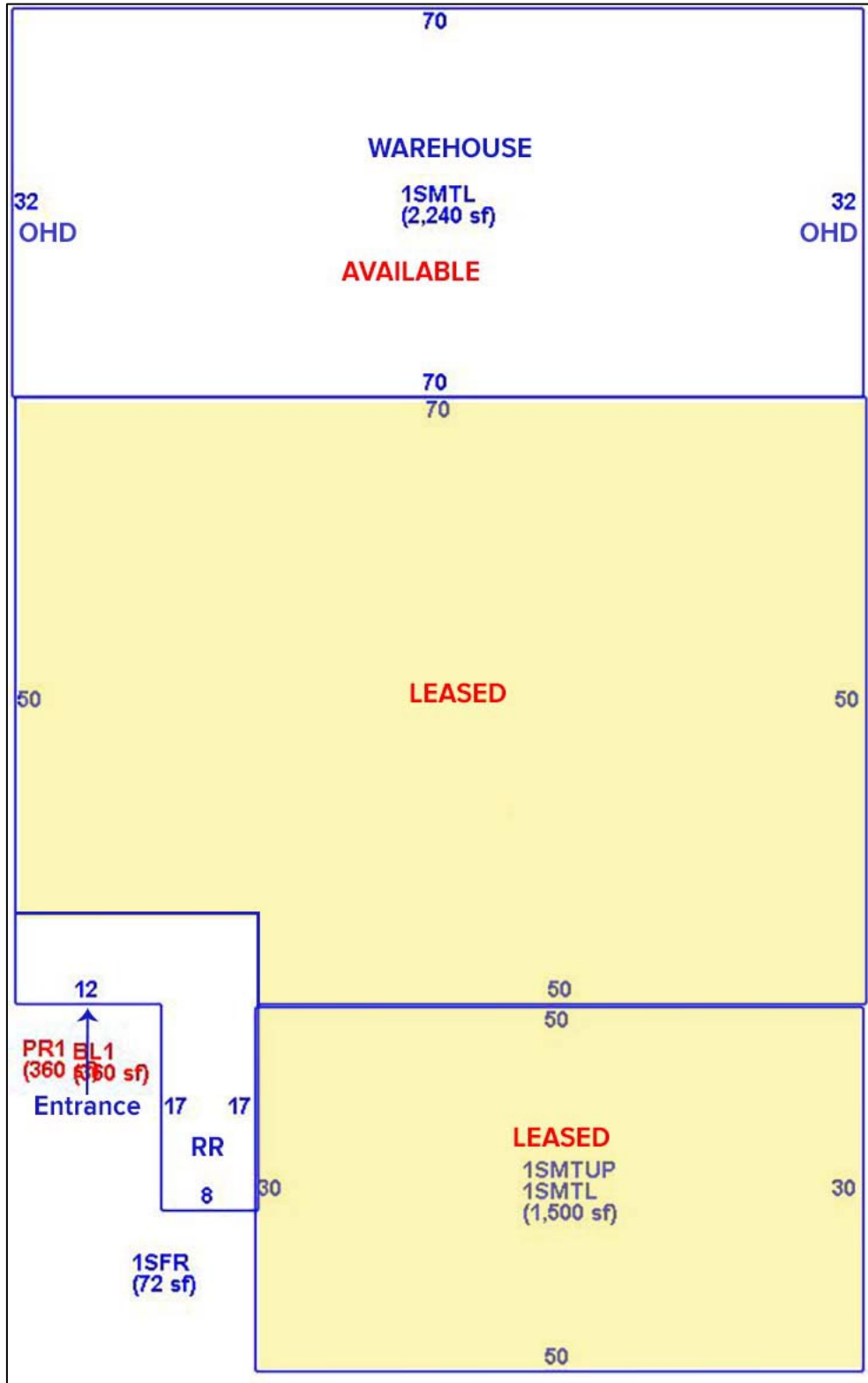
ROBERT P. MACK, CCIM, SIOR
(419) 466 6225
rpmack@signatureassociates.com

MEGAN MALCZEWSKI, CCIM, SIOR
(419) 215 1008
mmalczewski@signatureassociates.com

SIGNATURE ASSOCIATES
7150 Granite Circle, Suite 200
Toledo, Ohio 43617
www.signatureassociates.com

22502 & 22544 Dixie Highway, Perrysburg Twp, OH 43551
Commercial Building For Lease

2,240
Square Feet
AVAILABLE



For more information, please contact:

ROBERT P. MACK, CCIM, SIOR
(419) 466 6225
rpmack@signatureassociates.com

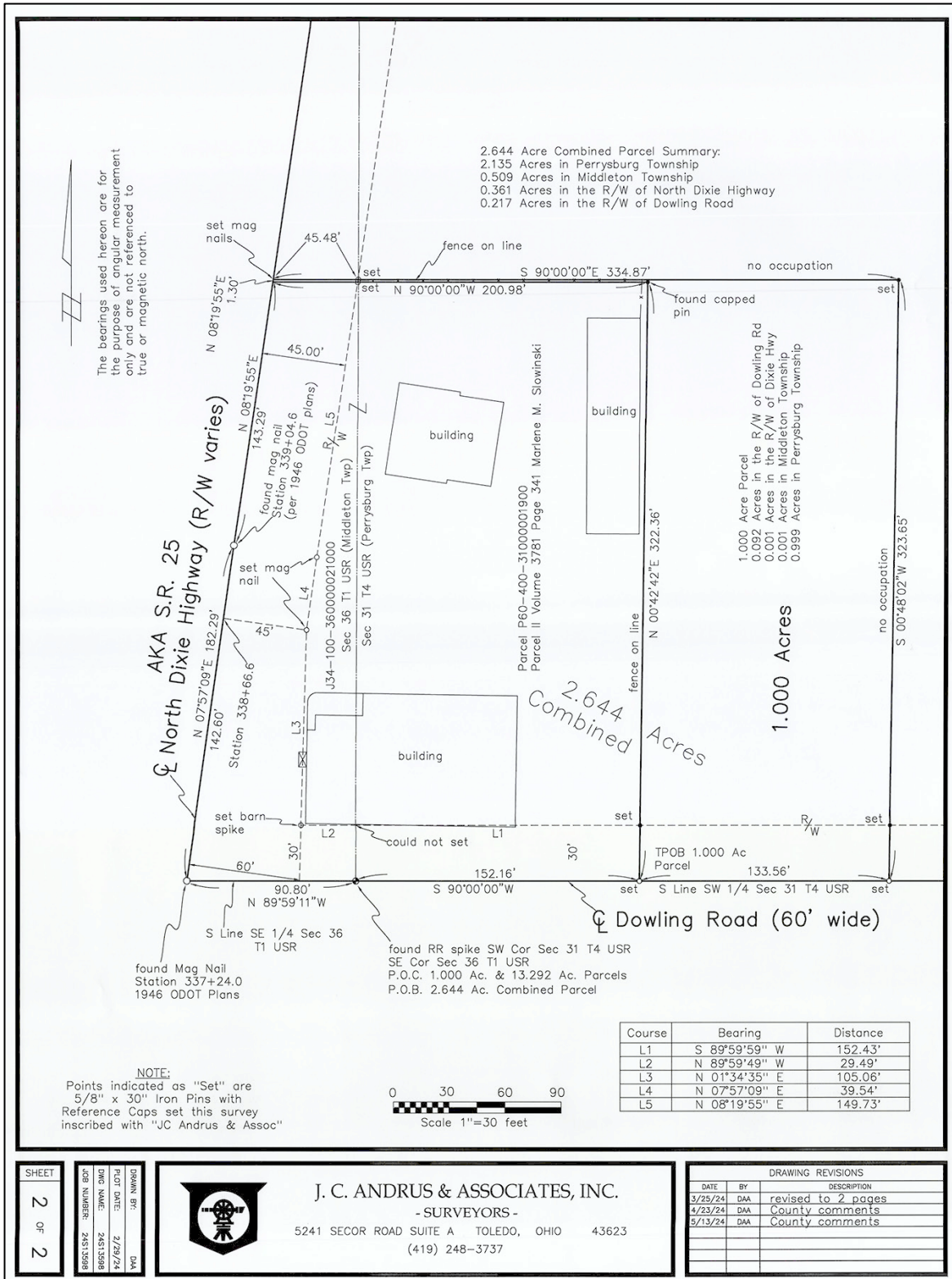
MEGAN MALCZEWSKI, CCIM, SIOR
(419) 215 1008
mmalczewski@signatureassociates.com

SIGNATURE ASSOCIATES
7150 Granite Circle, Suite 200
Toledo, Ohio 43617
www.signatureassociates.com

22502 & 22544 Dixie Highway, Perrysburg Twp, OH 43551

Commercial Building For Lease

2,240
Square Feet
AVAILABLE



For more information, please contact:

ROBERT P. MACK, CCIM, SIOR
 (419) 466 6225
 rpmack@signatureassociates.com

MEGAN MALCZEWSKI, CCIM, SIOR
 (419) 215 1008
 mmalczewski@signatureassociates.com

SIGNATURE ASSOCIATES
 7150 Granite Circle, Suite 200
 Toledo, Ohio 43617
 www.signatureassociates.com

22502 & 22544 Dixie Highway, Perrysburg Twp, OH 43551

Commercial Building For Lease

2,240
Square Feet
AVAILABLE



2026 TAX INFORMATION

Parcel	Acreage	Taxes	Land Valuation	Improvement Valuation	Total Valuation
P60-400-310000019500	1.15	\$8,840.88	\$48,300	\$247,200	\$295,500
J34-100-360000021000	0.50	\$143.50	\$7,900	\$0	\$7,900
P60-400-310000018000	Approx. 1.01	\$858.62	\$124,600	\$0	\$124,600

For more information, please contact:

ROBERT P. MACK, CCIM, SIOR
(419) 466 6225
rpmack@signatureassociates.com

MEGAN MALCZEWSKI, CCIM, SIOR
(419) 215 1008
mmalczewski@signatureassociates.com

SIGNATURE ASSOCIATES
7150 Granite Circle, Suite 200
Toledo, Ohio 43617
www.signatureassociates.com