

50270 E. RUSSELL SCHMIDT BLVD.
CHESTERFIELD TWP., MICHIGAN

INDUSTRIAL FOR LEASE
22,114 Square Feet Available



**SIGNATURE
ASSOCIATES**
KNOW SIGNATURE | KNOW RESULTS



PROPERTY FEATURES

- 22,114 square feet available
- 2,500 square feet office
- 20' clear height
- (1) 12' x 14' grade level door
- (2) truckwells
- Outstanding heavy manufacturing facility with well-appointed office
- Heavy power distribution throughout
- Large fenced storage yard
- Close-proximity to I-94
- Lease Rate: \$6.95/sq. ft. NNN



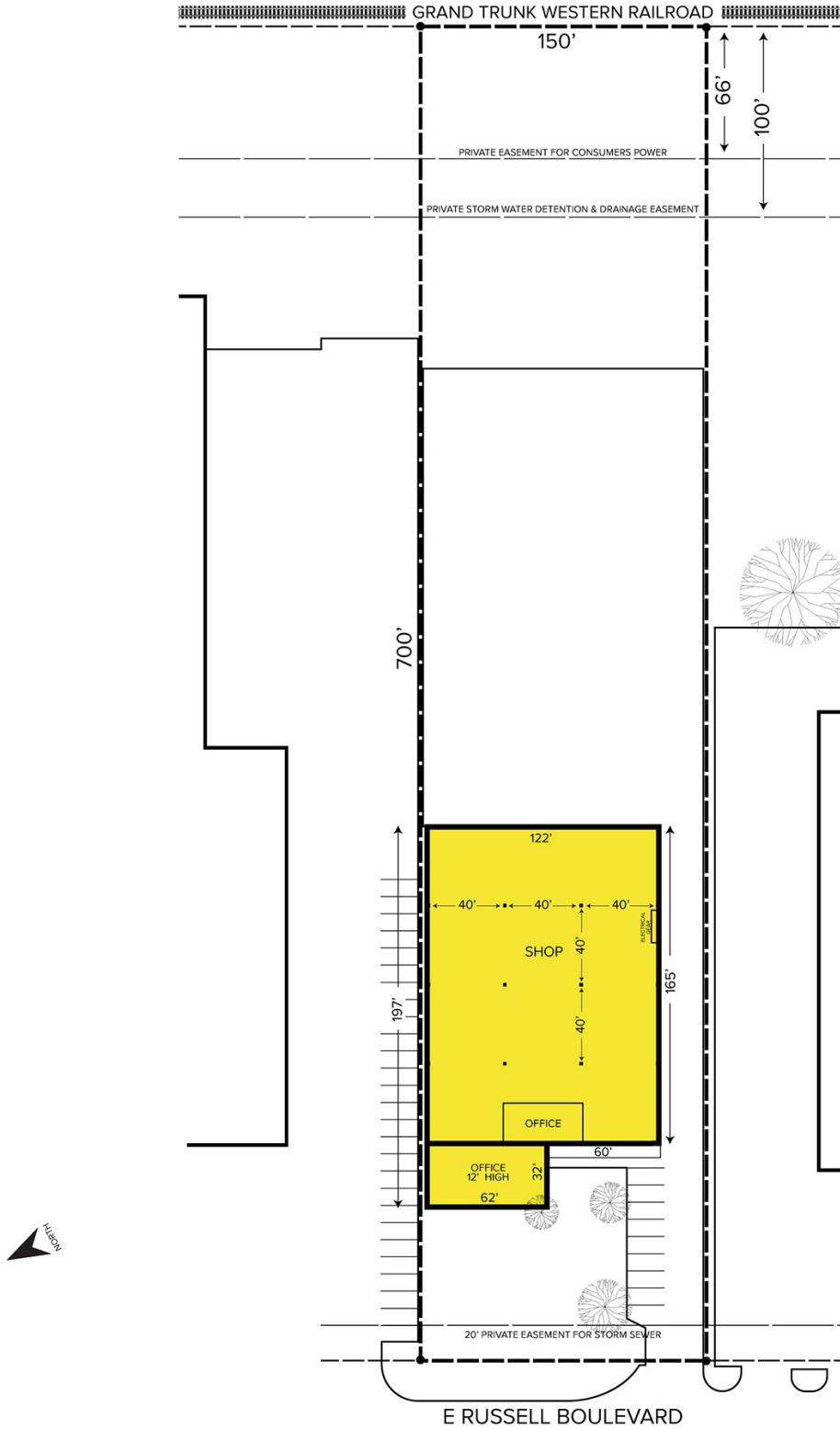
For more information, please contact:

BEN WILKIEMEYER
(248) 359 0624
bwilkiemeyer@signatureassociates.com

PAUL SAAD
(248) 359 0652
psaad@signatureassociates.com

SIGNATURE ASSOCIATES
One Towne Square, Suite 1200
Southfield, MI 48076
www.signatureassociates.com

Site Plan



For more information, please contact:

BEN WILKIEMEYER
(248) 359 0624
bwilkiemeyer@signatureassociates.com

PAUL SAAD
(248) 359 0652
psaad@signatureassociates.com

SIGNATURE ASSOCIATES
One Towne Square, Suite 1200
Southfield, MI 48076
www.signatureassociates.com

50270 E. Russell Schmidt Blvd. – Chesterfield Twp., MI Industrial For Lease

22,114
Square Feet
AVAILABLE

Aerial



For more information, please contact:

BEN WILKIEMEYER

(248) 359 0624

bwilkiemeyer@signatureassociates.com

PAUL SAAD

(248) 359 0652

psaad@signatureassociates.com

SIGNATURE ASSOCIATES

One Towne Square, Suite 1200

Southfield, MI 48076

www.signatureassociates.com