

DOWNTOWN GROUND FLOOR RETAIL SPACE

HOLLISTER BUILDING-ALLEGAN ST. & WASHINGTON SQ.



FOR LEASE
106 West Allegan St.,
Lansing, MI



**AVAILABLE
SPACE**
1,035 SF

SAMANTHA LE

Senior Associate, Retail Advisor
Direct: 517 319-9279
samantha.le@martincommercial.com

CARSON PATTEN

Vice President, Retail Advisor
Direct: 517 319-9230
carson.patten@martincommercial.com



1111 Michigan Ave., Ste 300
East Lansing, MI 48823
martincommercial.com

RETAIL SUITE IN THE HEART OF DOWNTOWN

First floor suite in the iconic Hollister building. Located at the corner of Washington Square and Allegan Street the hub for restaurants and shops for thousands of downtown workers. The site is within a 3 minute walk to the State Capitol, City Hall and numerous office buildings.

LEASE RATE:

\$20.00

PSF/YR, + UTILITIES
& JANITORIAL

PROPERTY INFORMATION



1,035 GROUND
FLOOR SUITE



3 MINUTE WALK
TO STATE CAPITOL



GRANTS
AVAILABLE FOR
NEW TENANTS



METERED
PARKING



POTENTIAL
BUILDING SIGNAGE



84
WALK SCORE



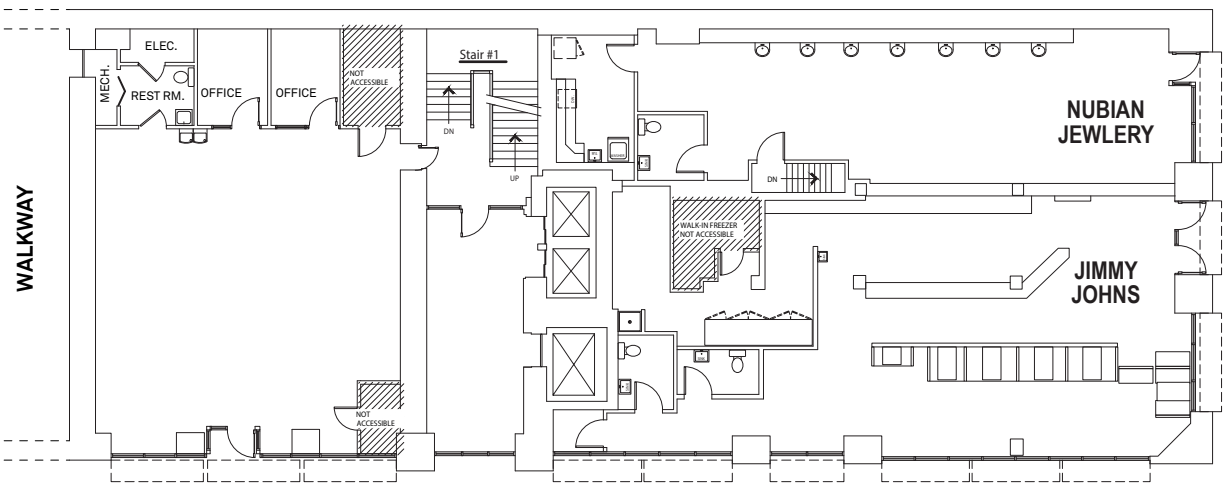
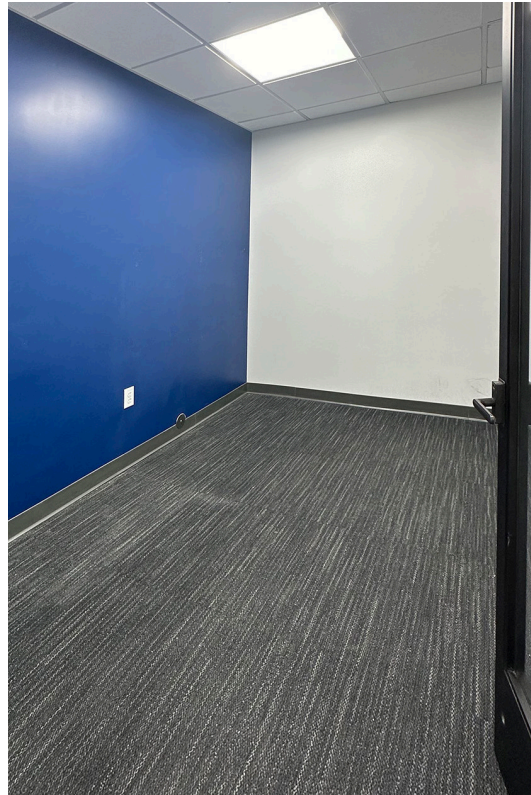
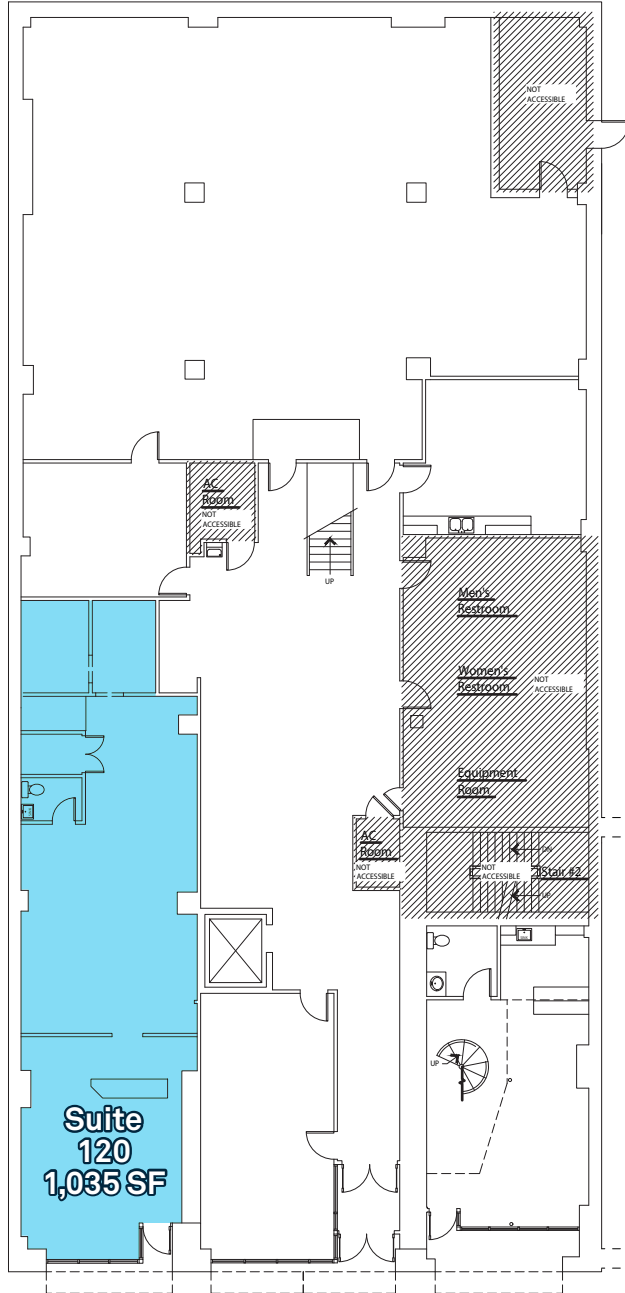
GROWING
RESIDENTIAL
DEVELOPMENT



2ND FLOOR
RESIDENTIAL
UNIT

© 2025 MARTIN COMMERCIAL PROPERTIES, INC. ALL RIGHTS RESERVED. THIS INFORMATION HAS BEEN OBTAINED FROM SOURCES BELIEVED RELIABLE BUT HAS NOT BEEN VERIFIED FOR ACCURACY OR COMPLETENESS. YOU SHOULD CONDUCT A CAREFUL, INDEPENDENT INVESTIGATION OF THE PROPERTY AND VERIFY ALL INFORMATION. ANY RELIANCE ON THIS INFORMATION IS SOLELY AT YOUR OWN RISK. MARTIN COMMERCIAL PROPERTIES AND THE MARTIN LOGO ARE SERVICE MARKS OF MARTIN COMMERCIAL PROPERTIES, INC. ALL OTHER MARKS DISPLAYED ON THIS DOCUMENT ARE THE PROPERTY OF THEIR RESPECTIVE OWNERS. PHOTOS HEREIN ARE THE PROPERTY OF THEIR RESPECTIVE OWNERS. USE OF THESE IMAGES WITHOUT THE EXPRESS WRITTEN CONSENT OF THE OWNER IS PROHIBITED.

FIRST FLOOR PLAN



AREA INFORMATION

<4 Minute

walk to State Capitol, City Hall, Grewal Hall, Cooley Law School and Davenport University

<10 Minute

walk to Lansing Center, Lugnut Stadium, Lansing Shuffle, LCC, Lansing River Trail and Capital City Market

±35 Restaurants

& coffee/specialty shops
Downtown

Conveniently Located

within walking distance to all of Downtown Lansing amenities.



DEMOGRAPHICS

Proximity	1-Mile	2-Mile	3-Mile
Population Projected Growth	4.4%	3.9%	3.6%
Consumer Retail Expenditures	\$136 M	\$514 M	\$1.09 B
Employees	22,994	32,097	52,388