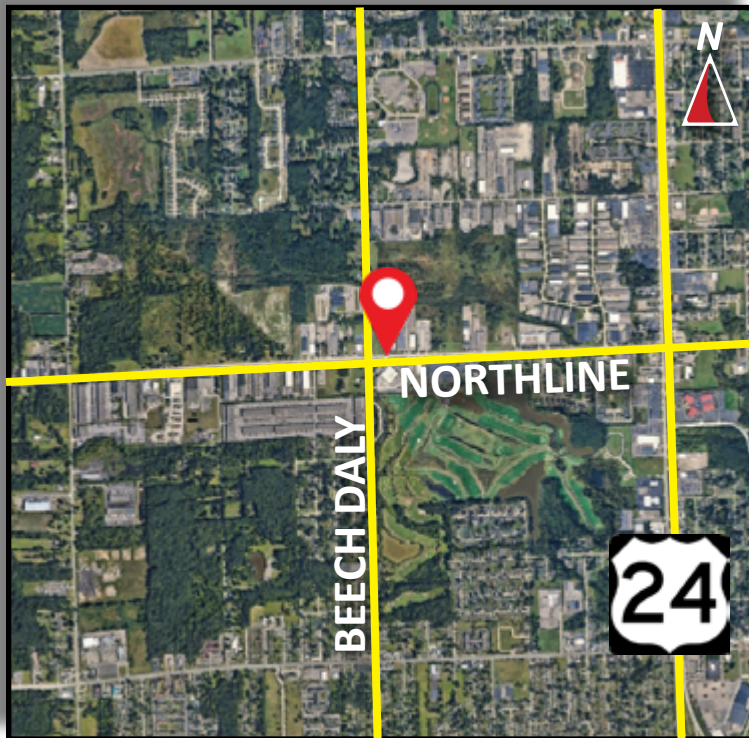


Burger

& COMPANY

FOR LEASE

25710 Northline Road
Taylor, Michigan
14,500 Square Feet



- 14,500 square feet for lease
- Located at the NE corner of Beech Daly and Northline
- Main road exposure
- 70 car parking spaces
- Fully air conditioned warehouse
- 25' clear height
- Two (2) 12'x14' grade level doors
- Immediate Occupancy!
- Landlord pays the base year real estate taxes and building insurance
- Lease rate: \$7.95 PSF MG / \$9,600 per month

Burger & Company

Nicolo Burger, SIOR, CCIM
Vice President
Cell: 810.224.8103
nic@burgercollc.com

Paul Burger, SIOR
President
Cell: 586.202.7800
paul@burgercollc.com

248.536.2888
www.burgercollc.com
38345 W. 10 Mile Road, Suite 100
Farmington Hills, MI 48335

Information contained herein is deemed to be reliable but is not guaranteed and may be withdrawn at any time.

FOR LEASE

25710 Northline Road
Taylor, MI



BUILDING SPECIFICATIONS

Location	Beech Daly & Northline	Total Building Square Feet	14,500 SF
County	Wayne	Office Square Feet	2,000 +/-
Zoning	I-1 Light Industrial	Warehouse Square Feet	12,500 SF
Lot Size	1.71 Acres	Year Built	2005
Construction	Brick over Block	Roof	Flat
Clear Height	25'	Grade Level Doors	Two (2) 12'x14'
Cranes	No	Dock Doors	No / Room to Add
Lighting	Fluorescent	Power	3 Phase / 208V
Heating	Gas Forced Unit Heater	Sprinklers	No
Warehouse A/C	Yes	Railroad	No
Buss Duct	No	Signage	Yes
Parking	Ample	Restrooms	Yes
Freestanding	Yes		

Description

- 14,500 square feet for lease
- Located at the NE corner of Beech Daly and Northline
- Main road exposure
- 70 car parking spaces
- Fully air conditioned warehouse
- 25' clear height
- Two (2) 12'x14' grade level doors
- Immediate Occupancy!
- Landlord pays the base year real estate taxes and building insurance
- Lease rate: \$7.95 PSF MG / \$9,600 per month

Lease Rate	\$7.95 Per Square Foot
Monthly	\$9,600.00
Lease Type	Modified Gross
Availability	Immediate Occupancy!

Burger

& COMPANY

Nicolo Burger, SIOR, CCIM
Vice President
Cell: 810.224.8103
nic@burgercollc.com

Paul Burger, SIOR
President
Cell: 586.202.7800
paul@burgercollc.com

248.536.2888
www.burgercollc.com
38345 W. 10 Mile Road, Suite 100
Farmington Hills, MI 48335

Information contained herein is deemed to be reliable but is not guaranteed and may be withdrawn at any time.

FOR LEASE

25710 Northline Road
Taylor, MI

EXTERIOR IMAGE



Nicolo Burger, SIOR, CCIM
Vice President
Cell: 810.224.8103
nic@burgercollc.com

Paul Burger, SIOR
President
Cell: 586.202.7800
paul@burgercollc.com

Burger

& COMPANY

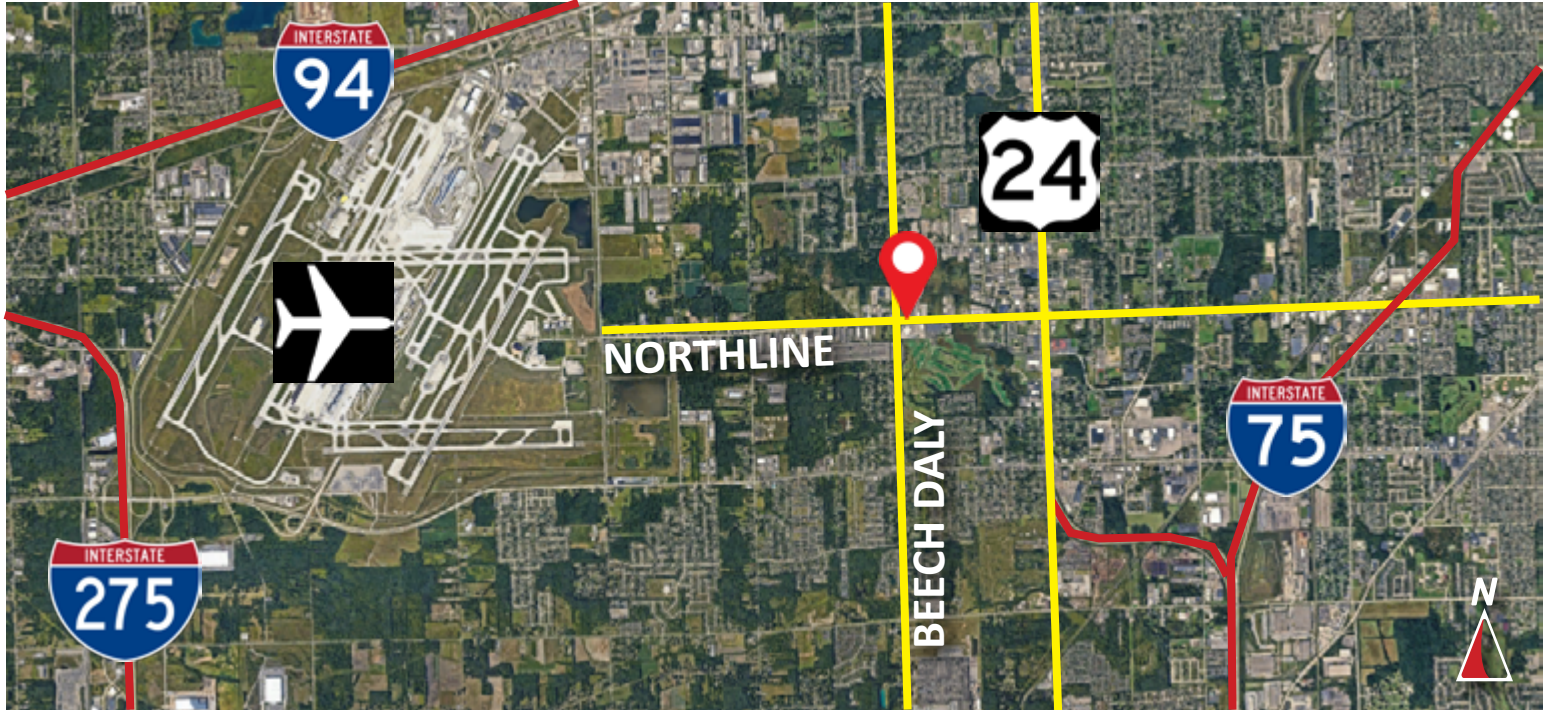
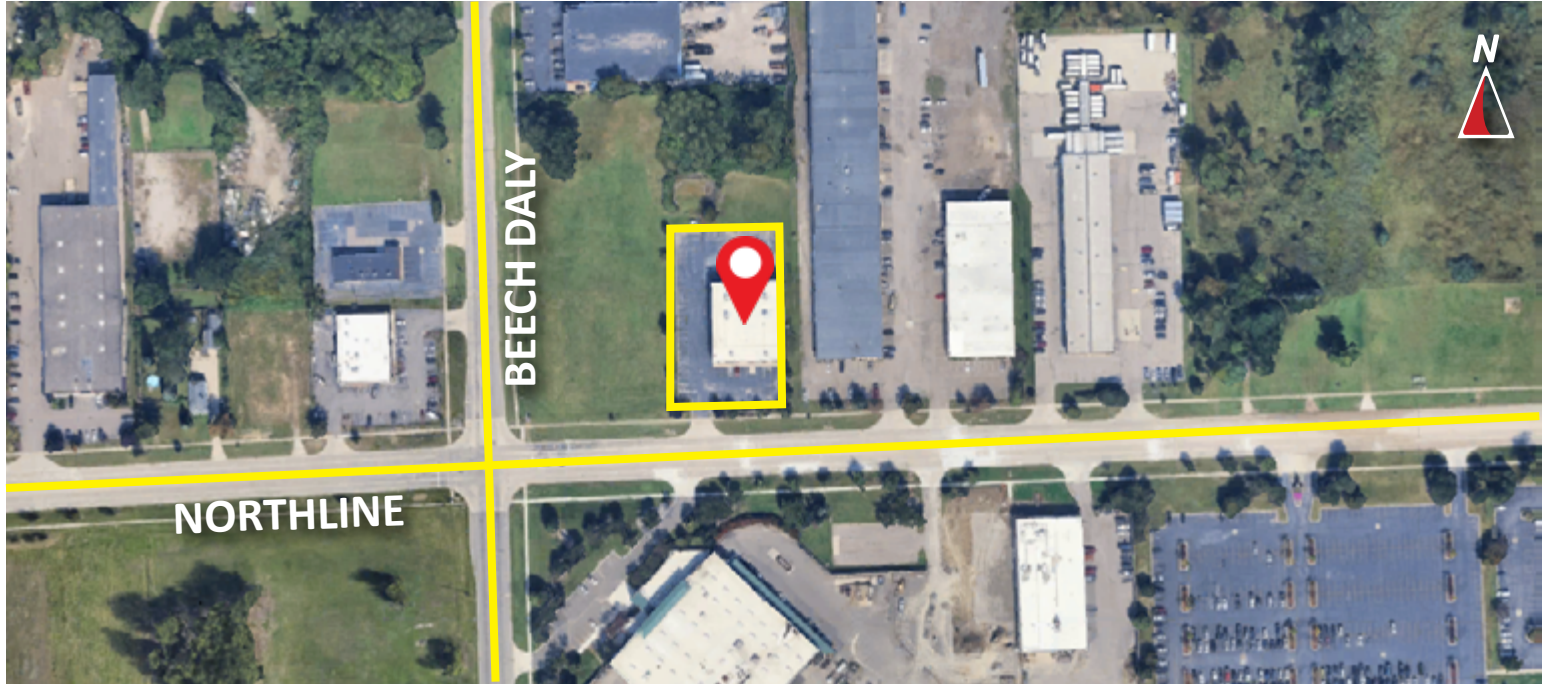
248.536.2888
www.burgercollc.com
38345 W. 10 Mile Road, Suite 100
Farmington Hills, MI 48335

Information contained herein is deemed to be reliable but is not guaranteed and may be withdrawn at any time.

FOR LEASE

25710 Northline Road
Taylor, MI

AERIAL / LOCATION MAP



Burger

& COMPANY

Nicolo Burger, SIOR, CCIM
Vice President
Cell: 810.224.8103
nic@burgercollc.com

Paul Burger, SIOR
President
Cell: 586.202.7800
paul@burgercollc.com

248.536.2888
www.burgercollc.com
38345 W. 10 Mile Road, Suite 100
Farmington Hills, MI 48335

Information contained herein is deemed to be reliable but is not guaranteed and may be withdrawn at any time.